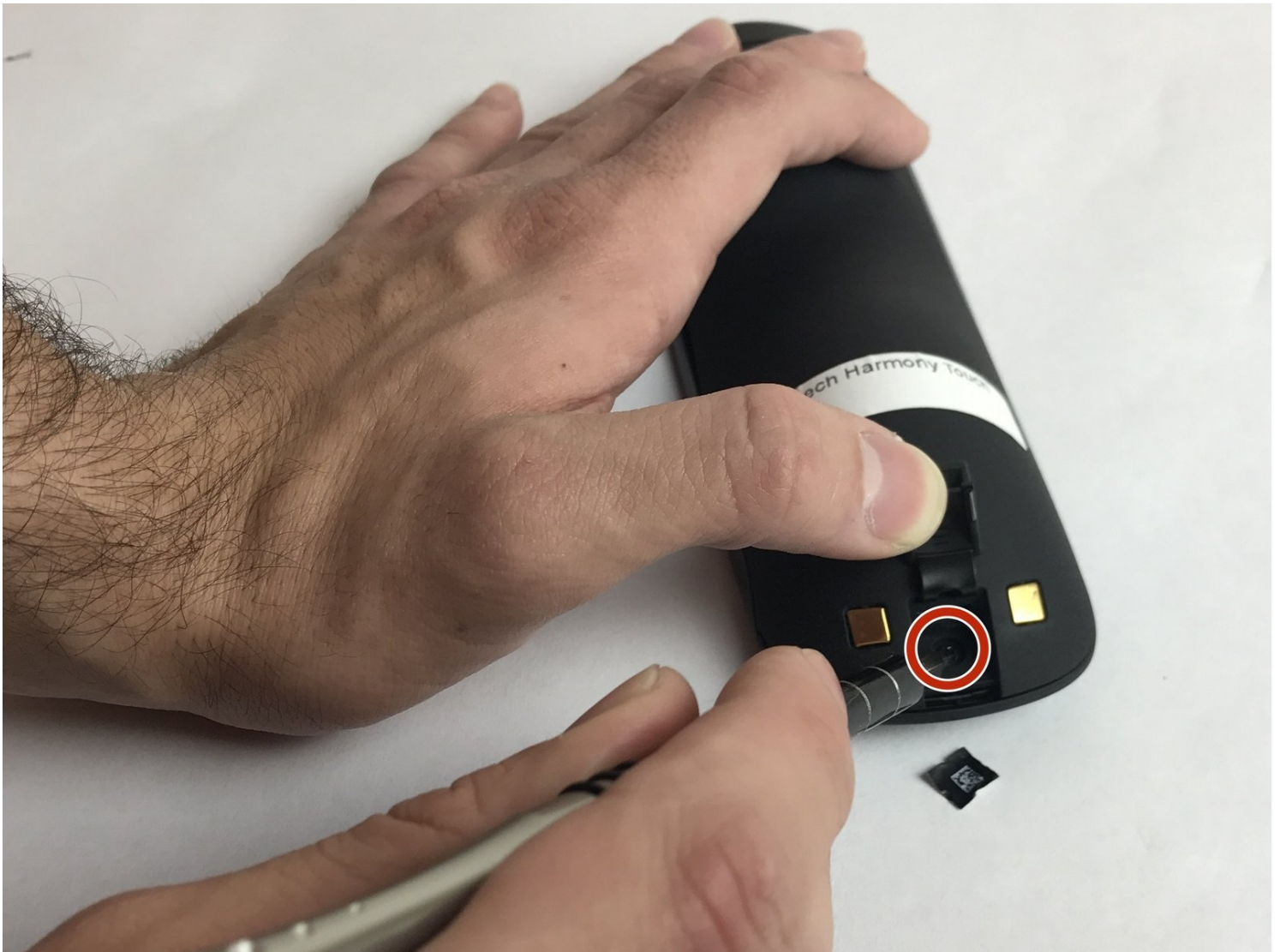




Logitech Harmony Touch Power Adapter Replacement

If the internal power adapter for your Logitech...

Written By: Jennifer Jimenez



INTRODUCTION

If the internal power adapter for your Logitech Harmony Touch Universal Remote, (Model Number 915-000279 or 915-000198) stops working, (won't charge, etc.), this guide will show you how to replace it.

The power adapter helps to narrow down the amount of voltage going into the product from its electrical source.

Before beginning, make sure to check the port for any debris. If any removable debris exists, use a small dust blower to remove it.

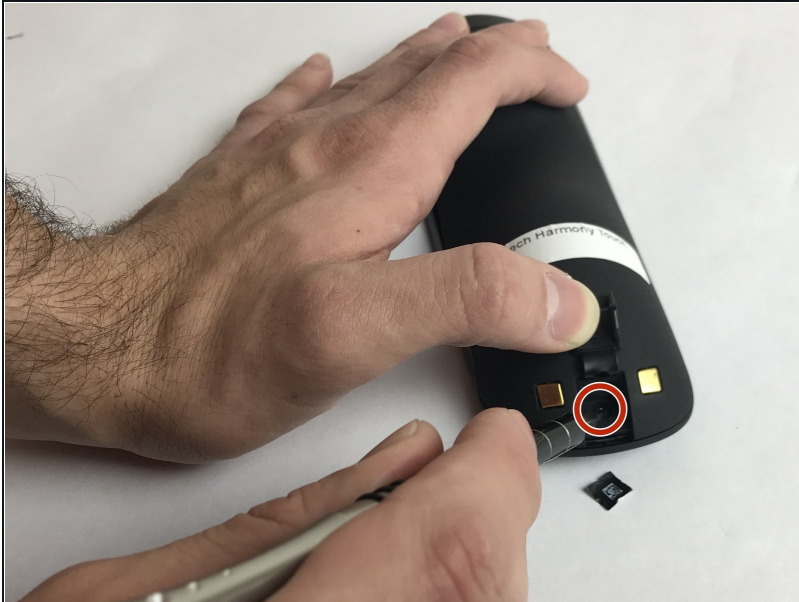
TOOLS:

[Metal Spudger](#) (1)

[iFixit Opening Tool](#) (1)

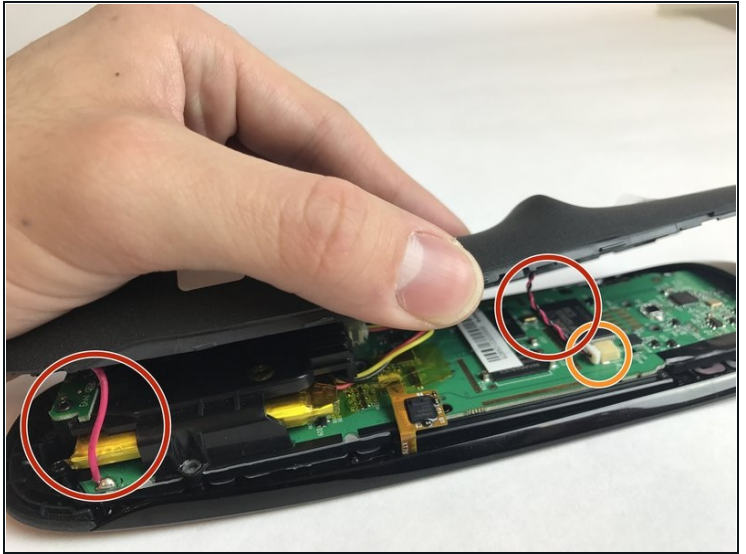
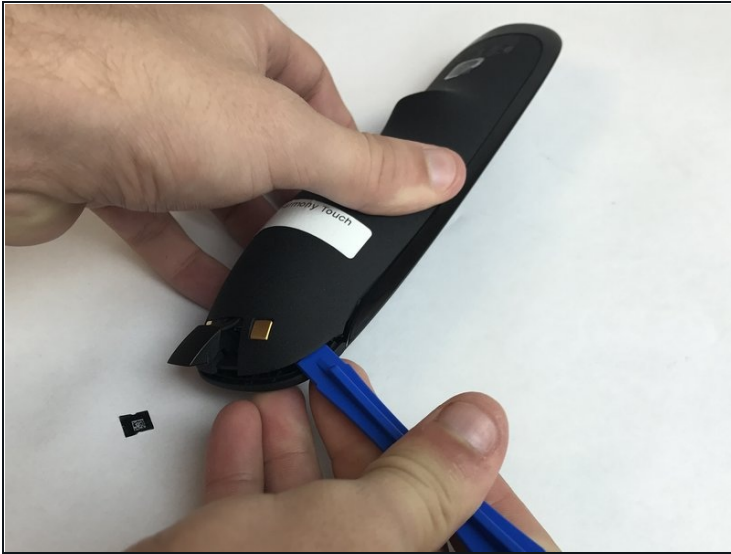
[Phillips #0 Screwdriver](#) (1)

Step 1 — Power Adapter



- Open the latch that assesses the charging port.
- Remove the black sticker and remove the screw with the indicated screwdriver.

Step 2

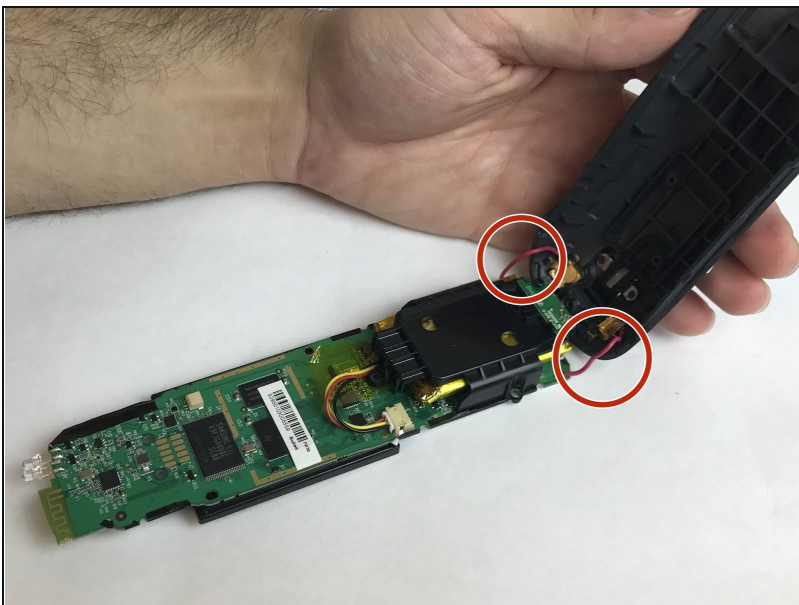


- Take the plastic opening tool and run it down the side of the remote to pop the case open.

⚠ While doing this step there are three wires that connect the two pieces, be sure not to rip them out when opening.

- Detach the white clamp to partially disconnect the case from the motherboard.

Step 3



- Once your device is open, check to see if wires are intact.
- If wires are not intact, solder your wires back in place to ensure contact with your charging port.

To reassemble your device, follow these instructions in reverse order.