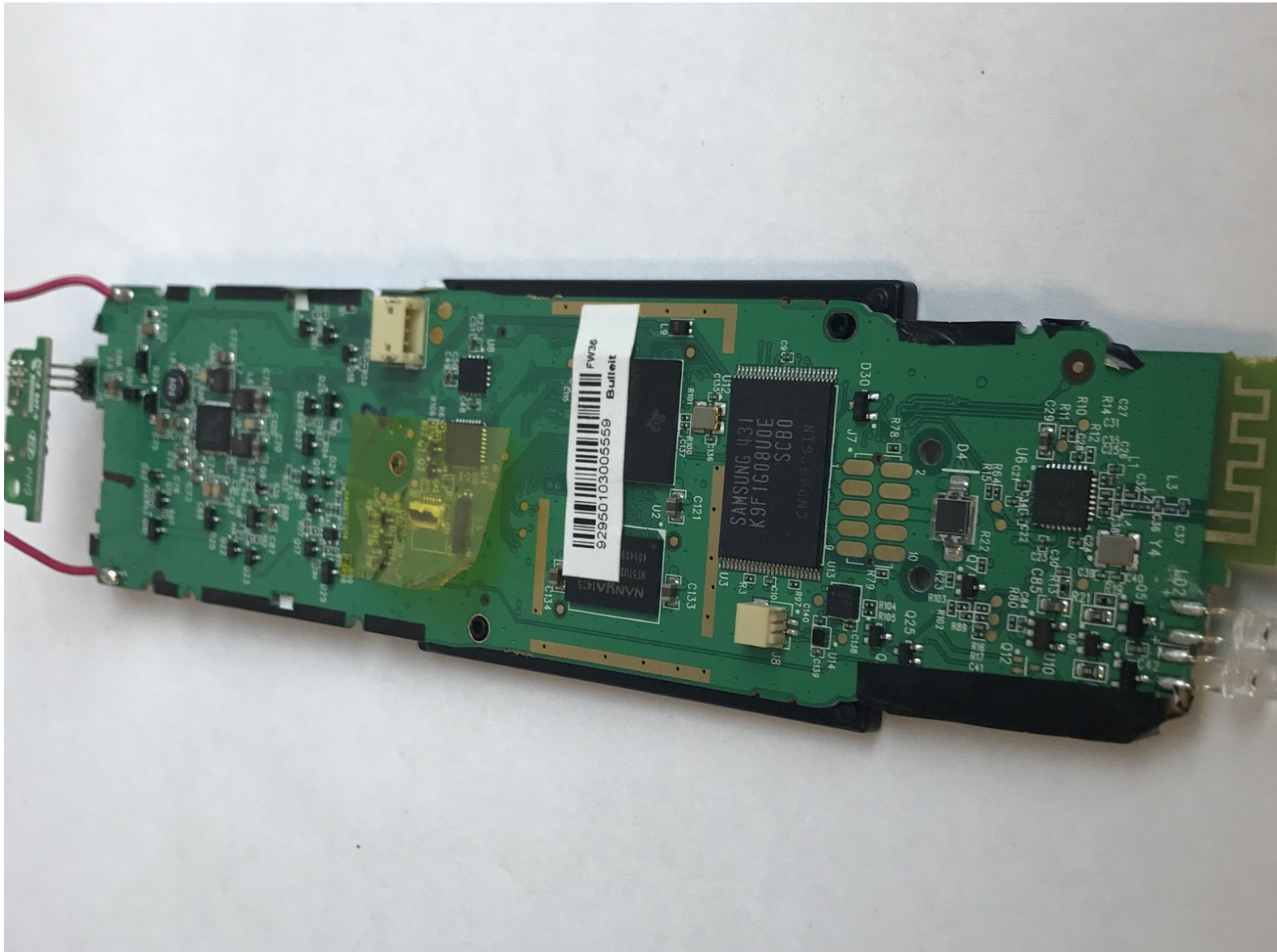




# Logitech Harmony Touch Motherboard Replacement

This guide will help you remove the motherboard

Written By: Lennox Saliva-Rojas



---

# INTRODUCTION

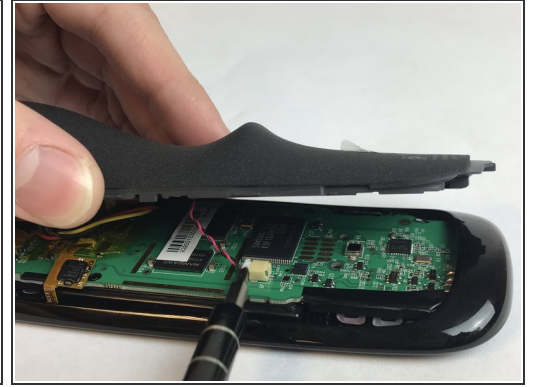
This guide will show you the process to disassemble the device and replace the motherboard.

---

## TOOLS:

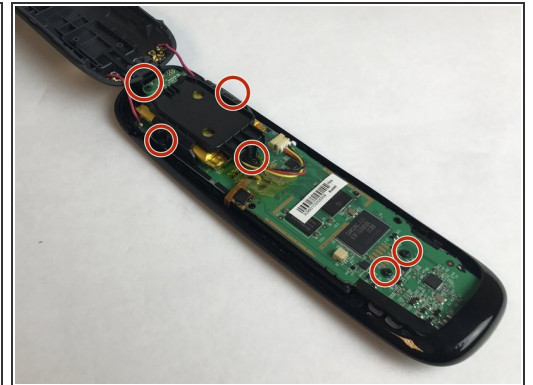
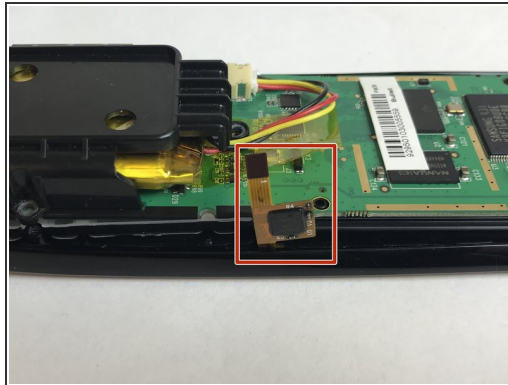
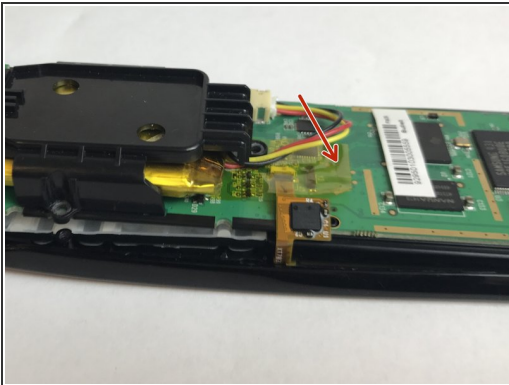
- [Metal Spudger](#) (1)
  - [iFixit Opening Tools](#) (1)
  - [Phillips #0 Screwdriver](#) (1)
-

## Step 1 — Motherboard



- Open the latch that accesses the charging port
  - Remove the black sticker and remove the screw with the indicated screwdriver
  - Take the plastic opening tool and run it down the side of the remote to pop the case open
- ⚠ While doing this step there are three wires that connect the two pieces, be sure not to rip them out
- Detach the white clamp to partially disconnect the case from the motherboard

## Step 2



- Peel back thin yellow plastic film and detach the clip found underneath
- Remove the screws that connect the motherboard to the case with the suggested screwdriver

## Step 3



- Next, carefully remove the motherboard from the top piece of the case
- ⓘ The motherboard is connected to the bottom part of the case
- You should now be able to access all of the buttons and remove them from the case

To reassemble your device, follow these instructions in reverse order.