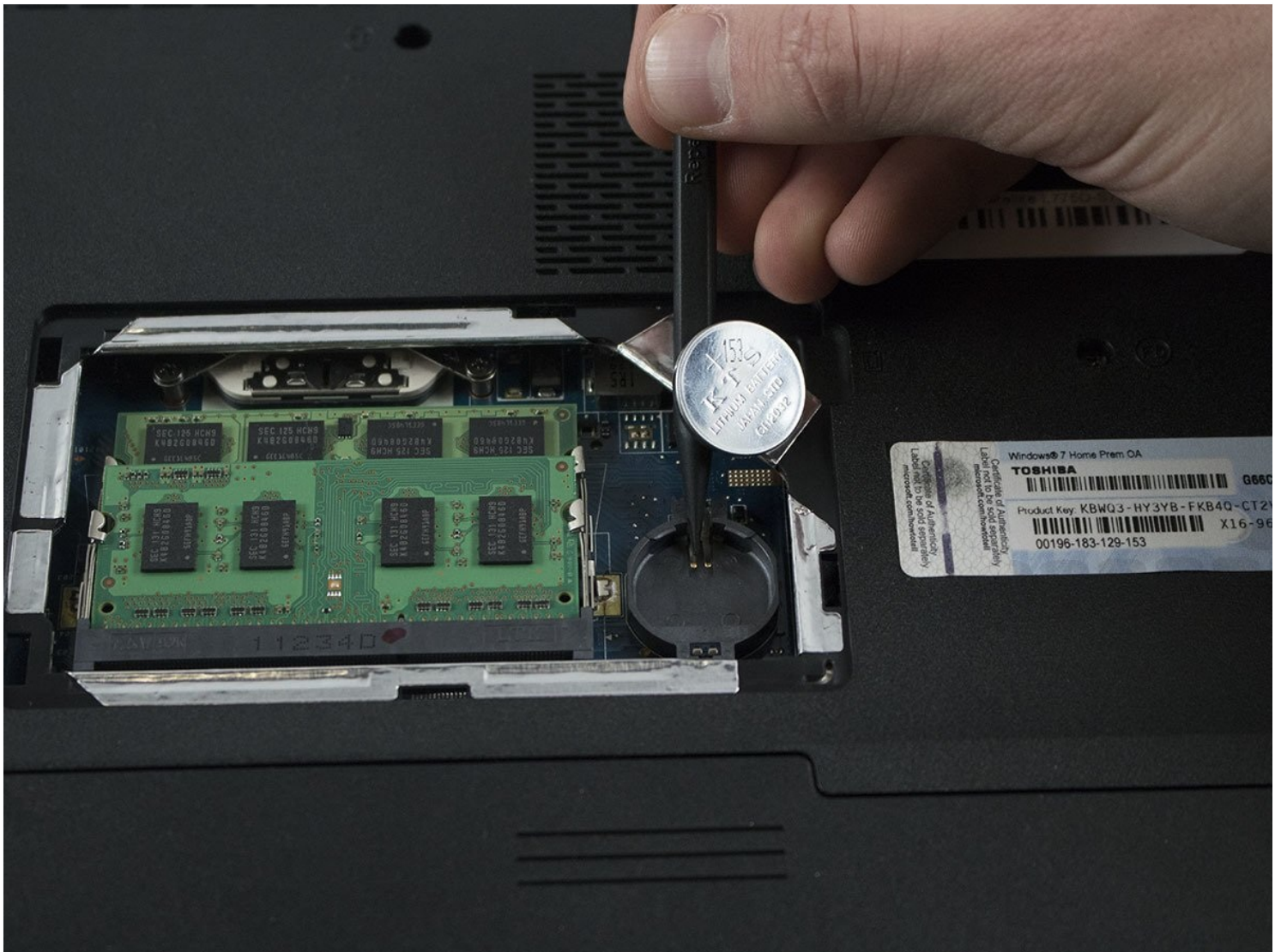




Toshiba Satellite L775D-S7340 CMOS Battery Replacement

This guide will show you how to remove and...

Written By: Elizabeth Sadewasser



INTRODUCTION

This guide will show you how to remove and replace the CMOS battery.

TOOLS:

[Phillips #1 Screwdriver](#) (1)

[Spudger](#) (1)

[iFixit Opening Tool](#) (1)

Step 1 — Battery



- Make sure the laptop is unplugged and powered off.
- Locate the battery latches on the underside of the laptop.

Step 2



- Slide the right latch to the right until you hear it lock into place.
- Slide the left latch to the left and hold it.

Step 3



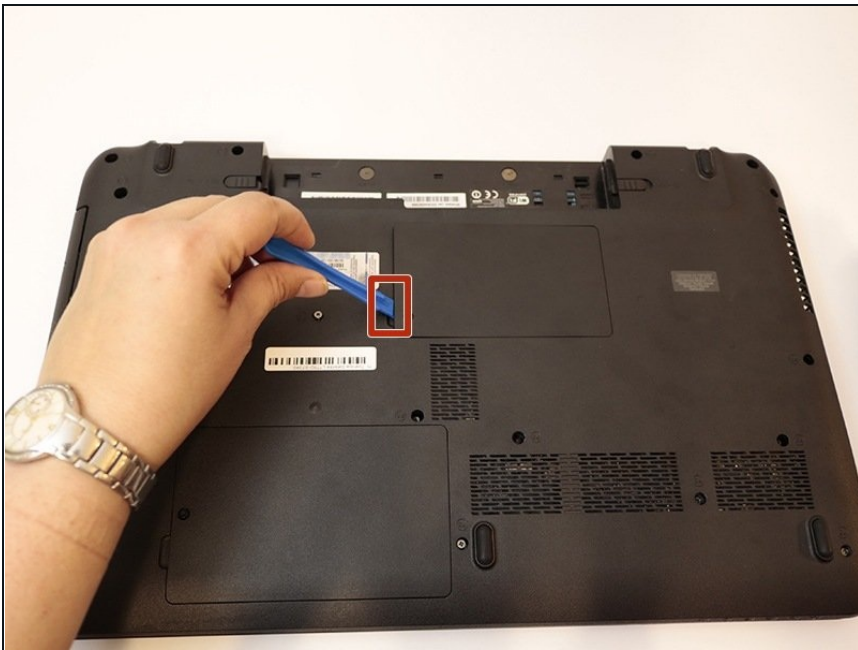
- Slide the battery out towards you.

Step 4 — CMOS Battery



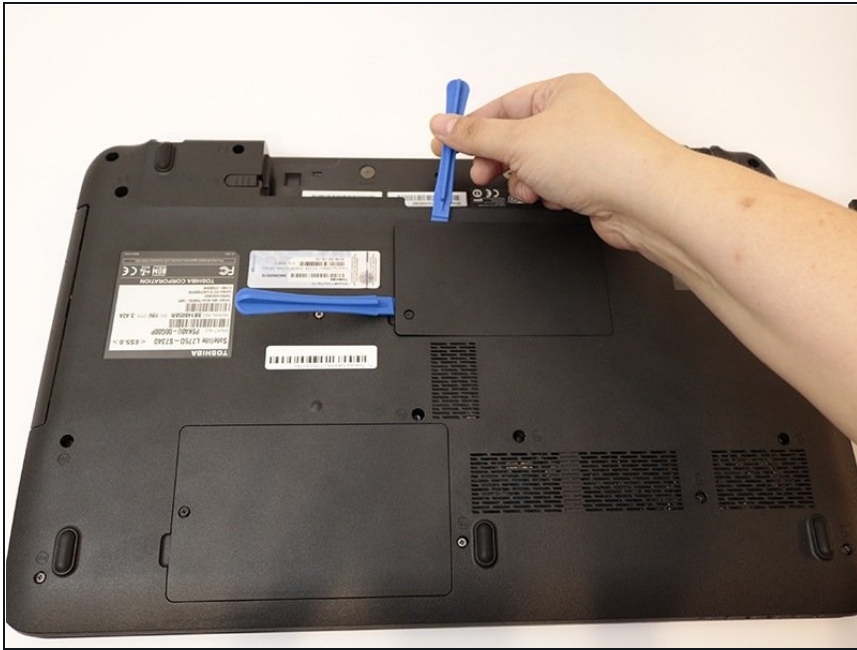
- Use the Phillips #1 screwdriver to remove the one 4.6 mm screw holding on the cover located on the bottom center of the laptop.

Step 5



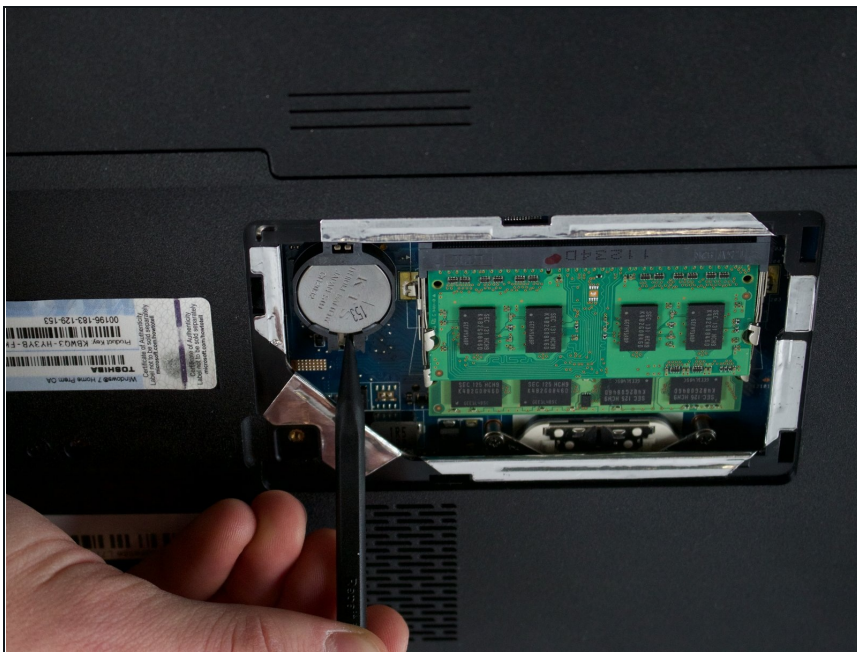
- Use the plastic opening tool to pry open the CMOS battery cover. Wedge the prying tool in, beginning at the indent in the cover.

Step 6



- Use another prying tool to pry up along the edges of the cover. Continue prying up around the edges until the cover is open and remove it.

Step 7



- Using the pointed side of the spudger, remove the CMOS battery by pushing down on the tab that secures the battery in place.
- ① The CMOS battery should pop up or out of its holder.

To reassemble your device, follow these instructions in reverse order.

