



HP 15-f033wm Hard Drive Replacement

Follow this repair guide if you believe your...

Written By: Benjamin Poirier



INTRODUCTION

Follow this repair guide if you believe your hard drive is not functioning properly and want to remove it.

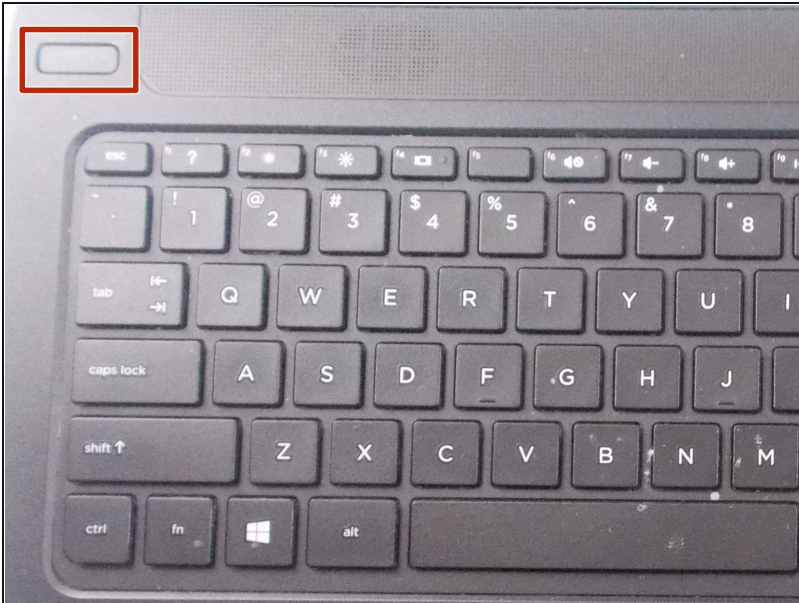
TOOLS:

Spudger (1)
Phillips #1 Screwdriver (1)

PARTS:

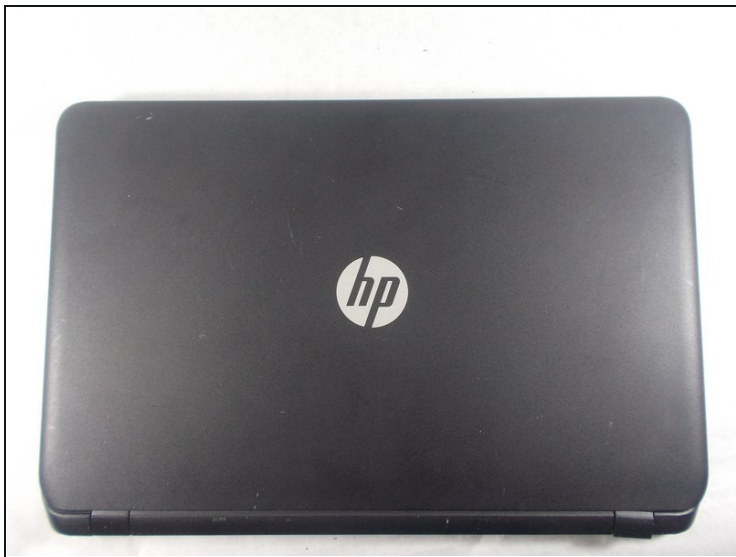
Crucial MX500 1 TB SSD (1)
Crucial MX500 250 GB SSD (1)
Crucial MX500 500 GB SSD (1)
2 TB SSD (1)

Step 1 — Battery



- Turn power off using the power button located in the top left corner of the keyboard. Press and hold the power button for 3 seconds until it turns off.

Step 2



- Close the laptop and flip it over so that the HP cover logo is on the underside of the laptop.

Step 3



- Locate the battery and the two switches that release the battery when they are unlocked.

Step 4



- Slide the left switch to the right so that the icon of a locked padlock is no longer visible and the icon of an unlocked padlock is now visible.

Step 5



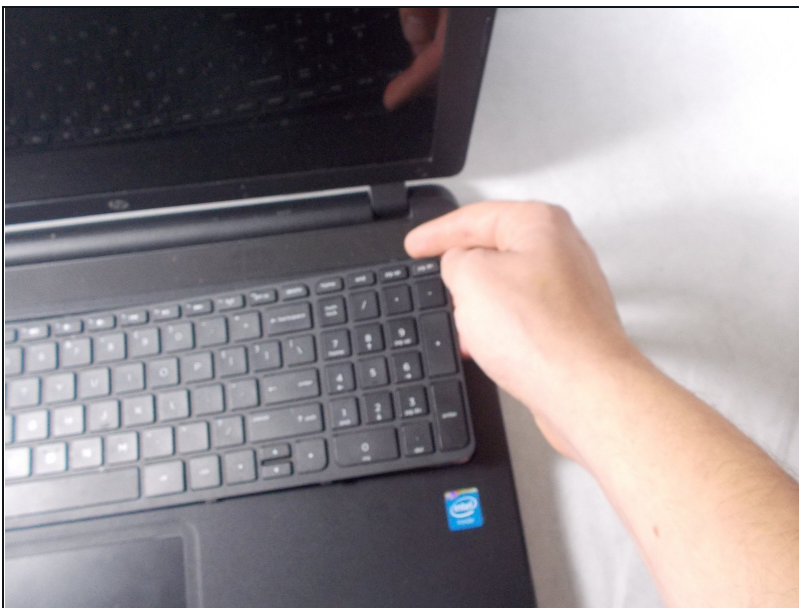
- With your left hand, slide the right switch to the left and hold it in place. This will unlock the battery and allow you to easily slide it out of its port.
- While holding the switch in place, use your right hand to gently remove the battery from its port.

Step 6 — Palm Rest Disassembly



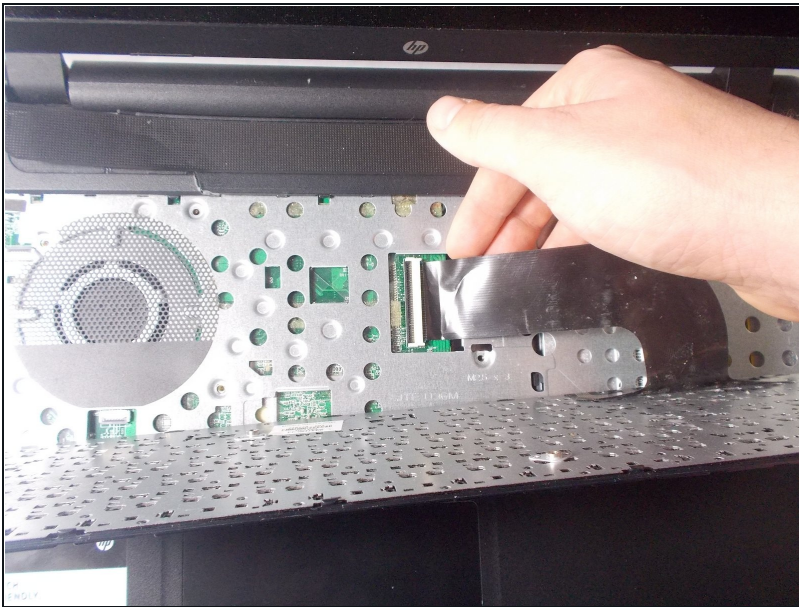
- Remove the thirteen 7 mm PH1 Phillips head screws from the bottom of the laptop.

Step 7



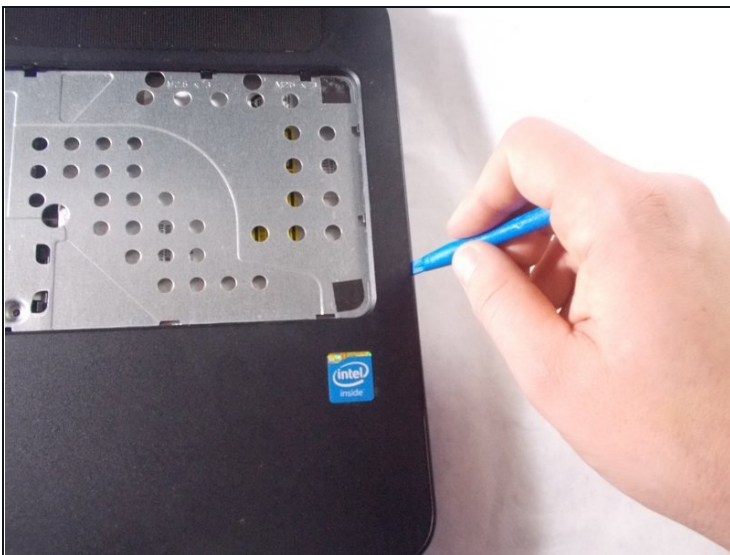
- Pry up and detach the keyboard. Starting at the top, slowly work the side and pull the keyboard away from you to unseat the bottom tabs.

Step 8



- Remove the keyboard connection from the laptop by flipping up the black tab on the ZIF connector.

Step 9



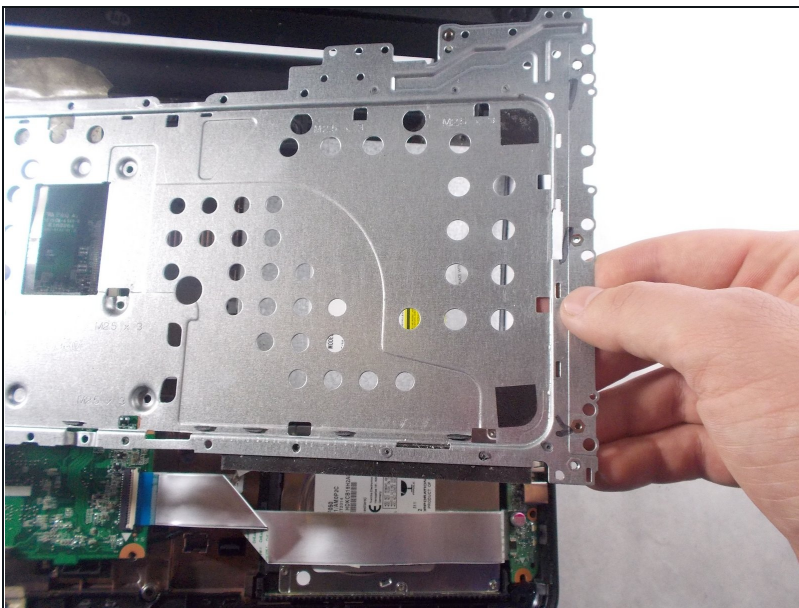
- Remove the palm rest using the blue spudger tool.

Step 10



- Remove the five 3 mm PH1 Phillips head screws underneath keyboard.

Step 11



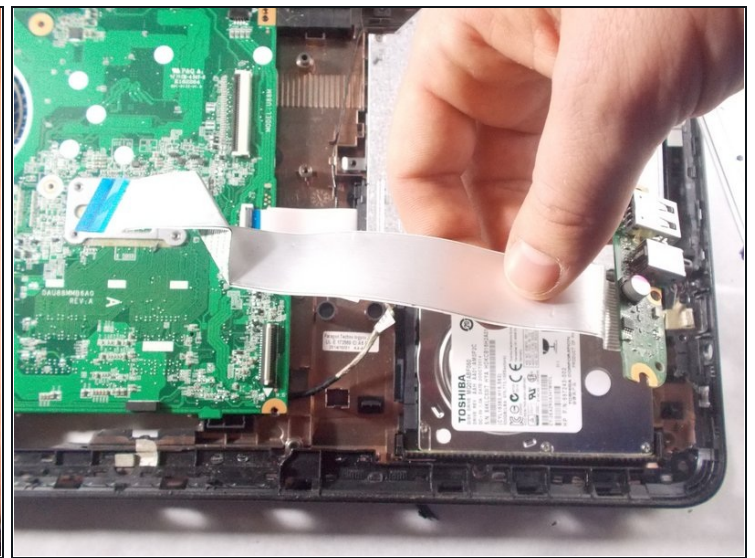
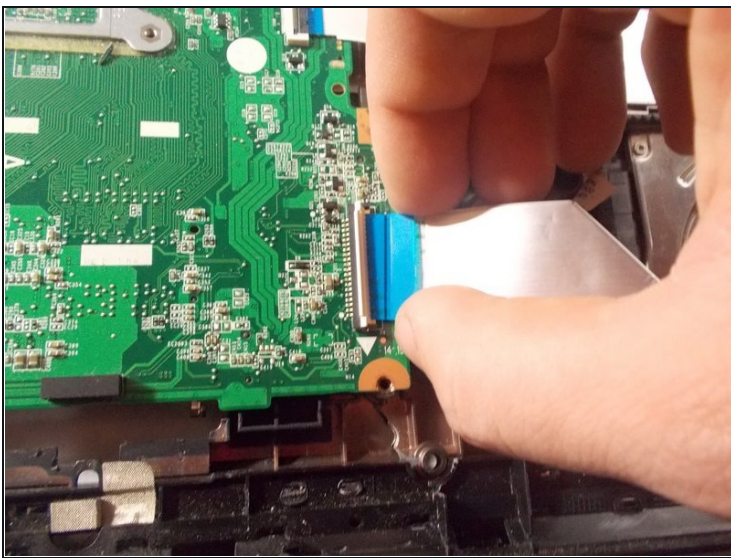
- Remove metal keyboard underlayment.
- ⓘ There is no way to separate the palm rest from the keyboard. They both are removed as an assembly.

Step 12 — Hard Drive



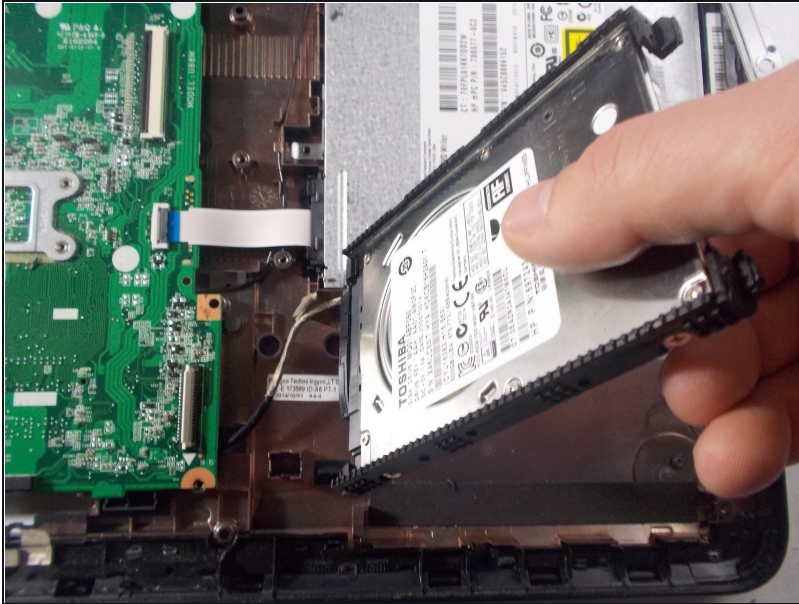
- After removing the battery and palm rest, unscrew the two 3 mm PH1 Phillips head screws that hold the small tab that secures the connection of the USB port and headphone jack.

Step 13



- Pull the connected cord out of the previously lifted tab and remove from laptop.

Step 14



- Lift up hard drive.

Step 15



- Remove the connection from the left of the hard drive connecting it to the rest of the laptop and remove the hard drive from the laptop.

To reassemble your device, follow these instructions in reverse order.