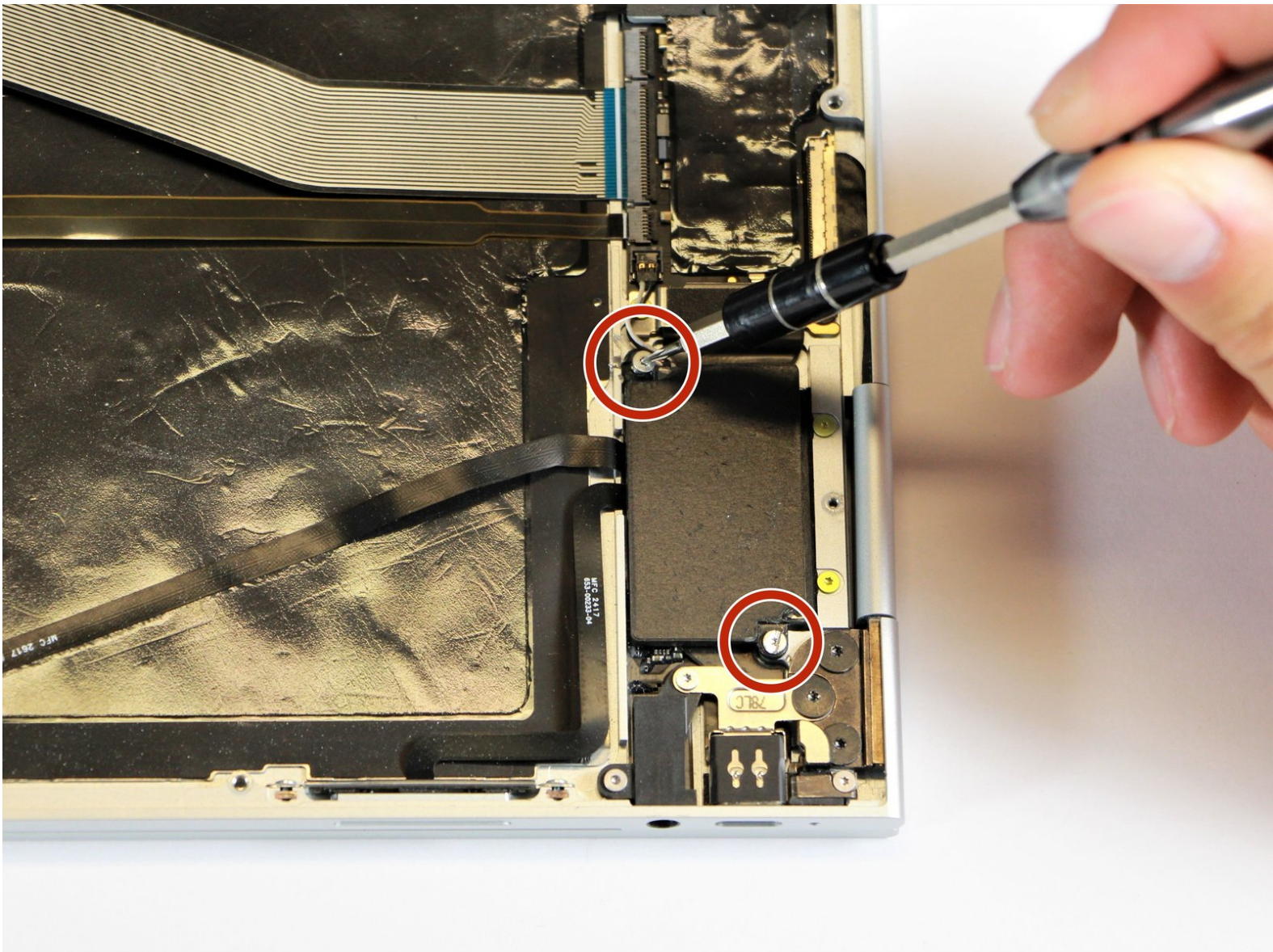




Google Pixelbook Left Charging Port Replacement

How to replace a Google Pixelbook left charging port.

Written By: Alon Gary



INTRODUCTION

In this guide, you will learn how to replace the left charging port on your Google Pixelbook to fix charging issues.

TOOLS:

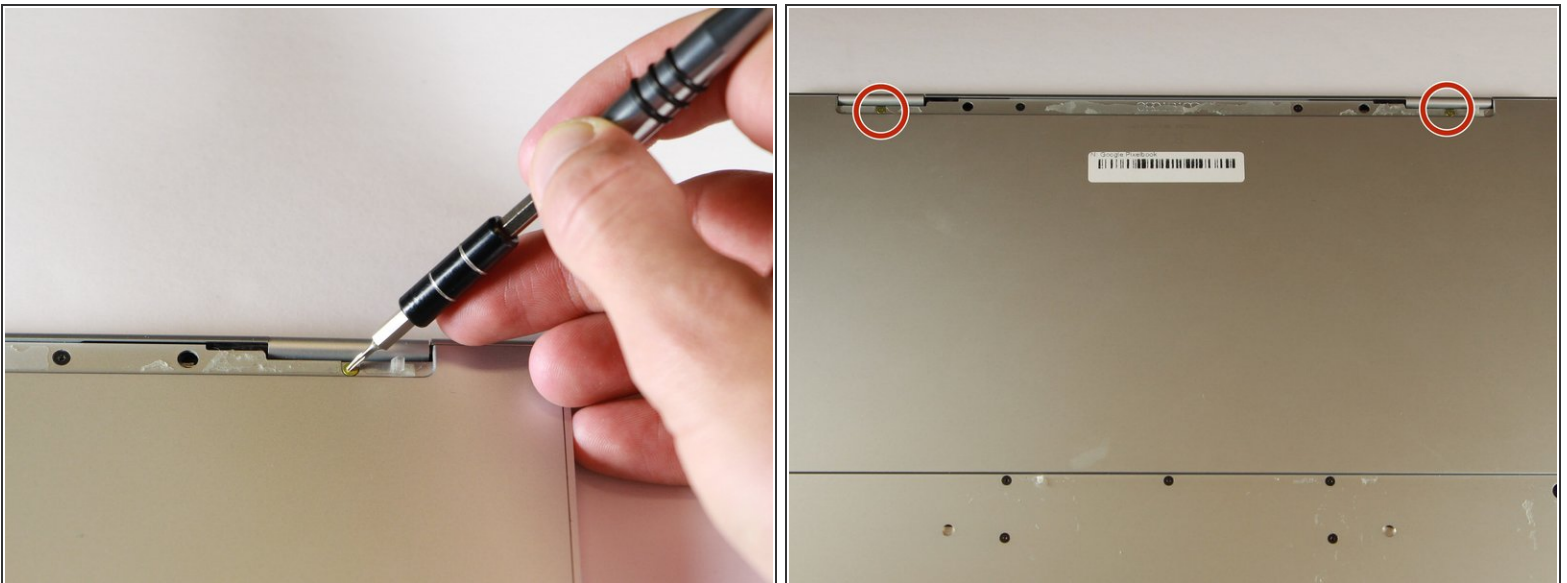
- [iFixit Opening Tools](#) (1)
 - [Metal Spudger \(optional\)](#) (1)
 - [T3 Torx Screwdriver](#) (1)
 - [T5 Torx Screwdriver](#) (1)
 - [Spudger](#) (1)
 - [Tweezers](#) (1)
-

Step 1 — Battery (Back Panel)



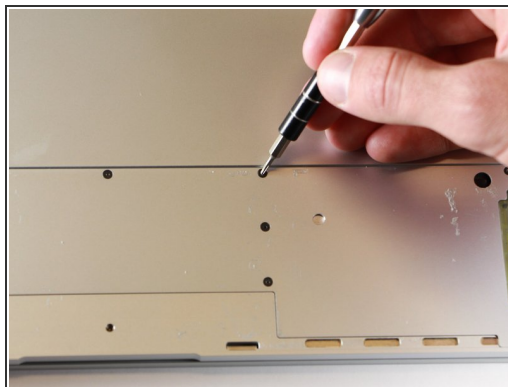
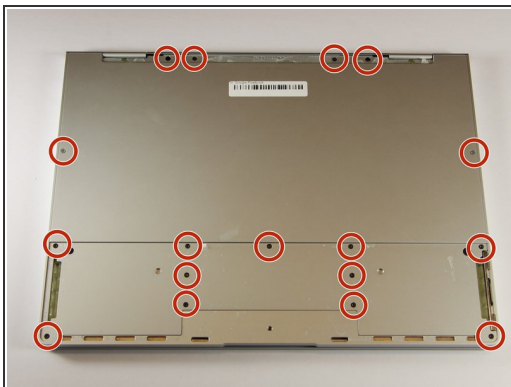
- Use the iFixit opening tools or a metal spudger to pry the rubber covers off the back of your Pixelbook.
- Peel the linings off completely until the back of the Pixelbook looks bare.

Step 2



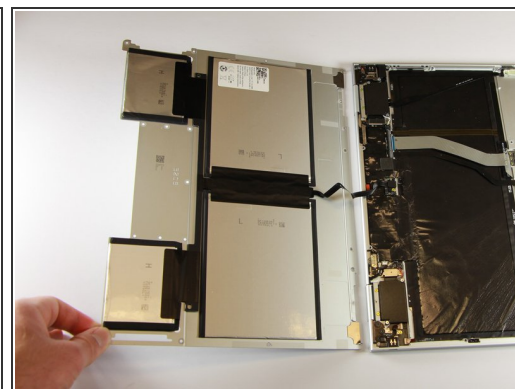
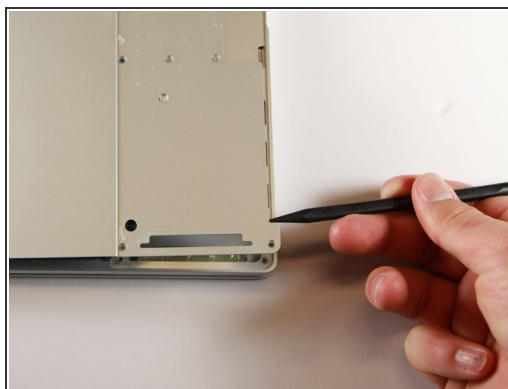
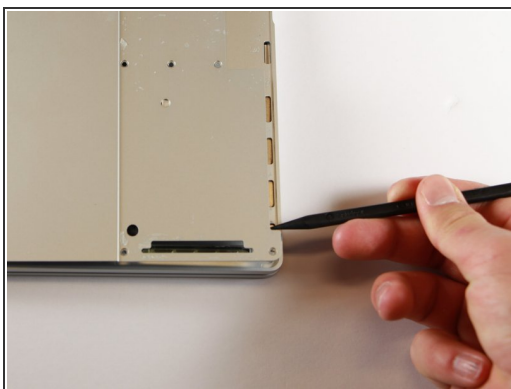
- Remove the two yellow 2.0mm screws by using a T3 Torx screwdriver.

Step 3



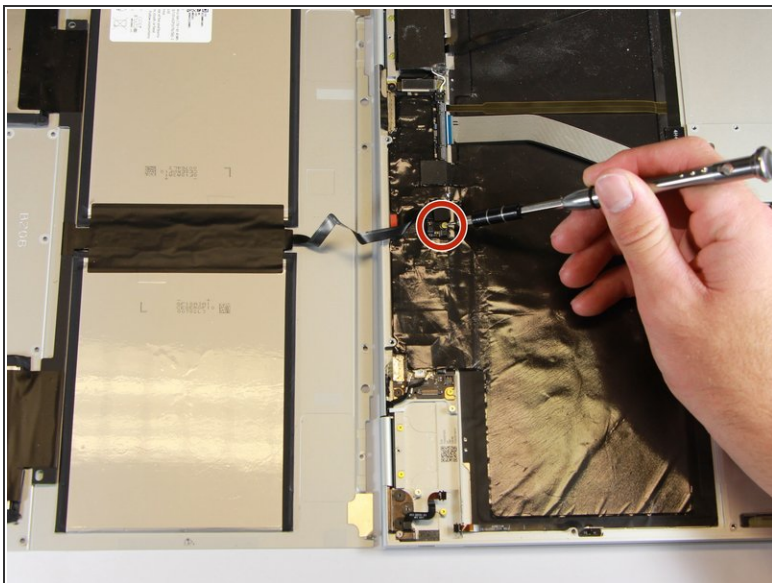
- Remove the seventeen 3.0mm T5 Torx screws from the bottom panel.

Step 4



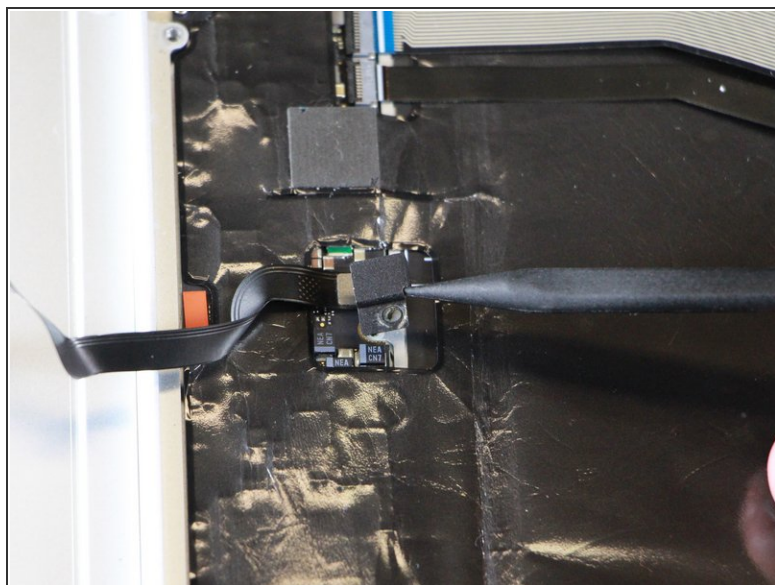
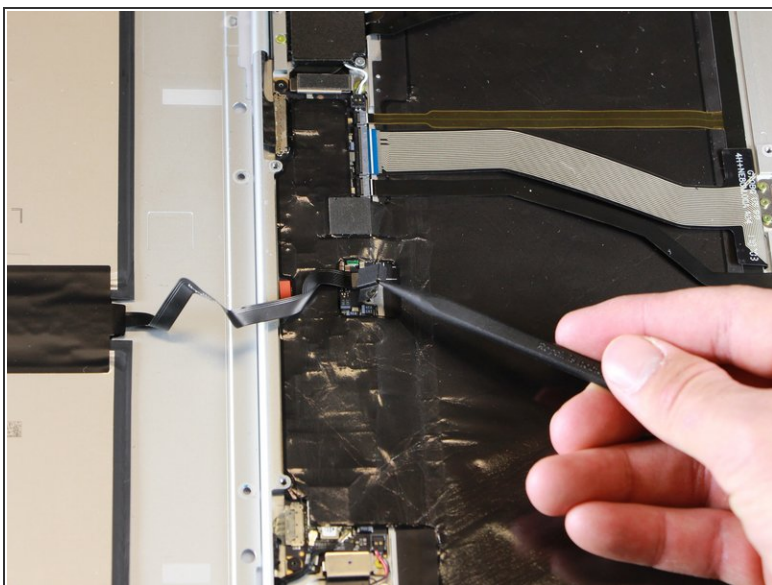
- Use the nylon spudger to pry the edge of the Pixelbook up until you can grab the edge with your fingers.
- Open the back panel completely and lay it flat so you see the whole inside of the computer.

Step 5



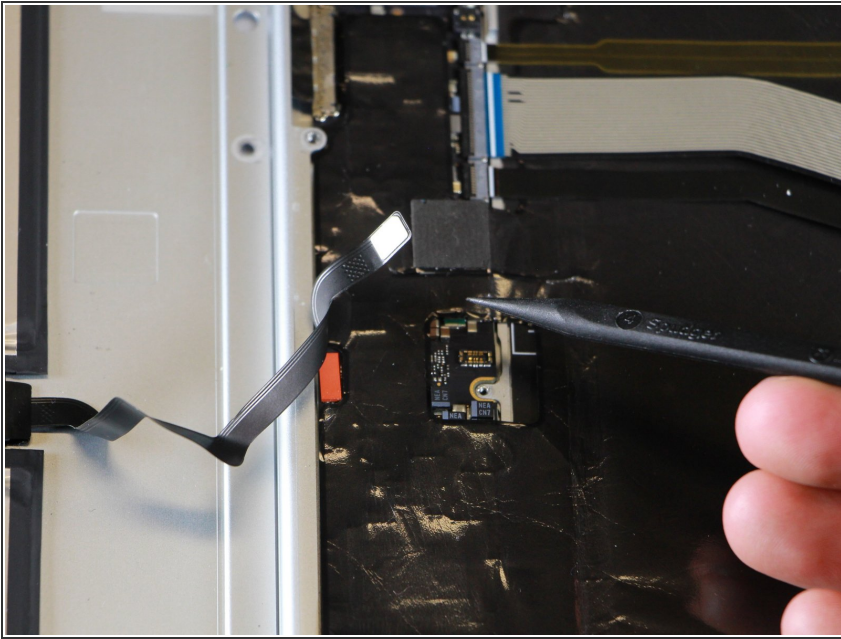
- Remove the yellow 2.0mm screw from the middle of the panel by using the T3 Torx screwdriver to turn the screw counterclockwise.

Step 6



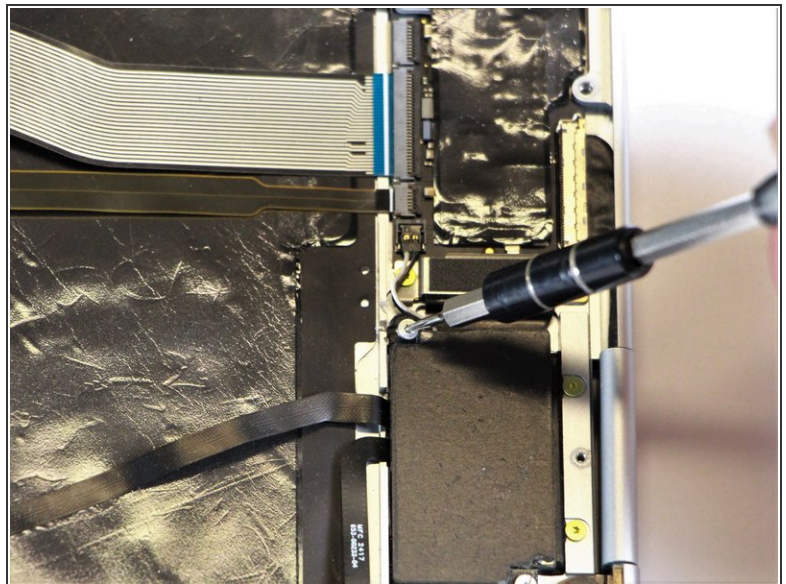
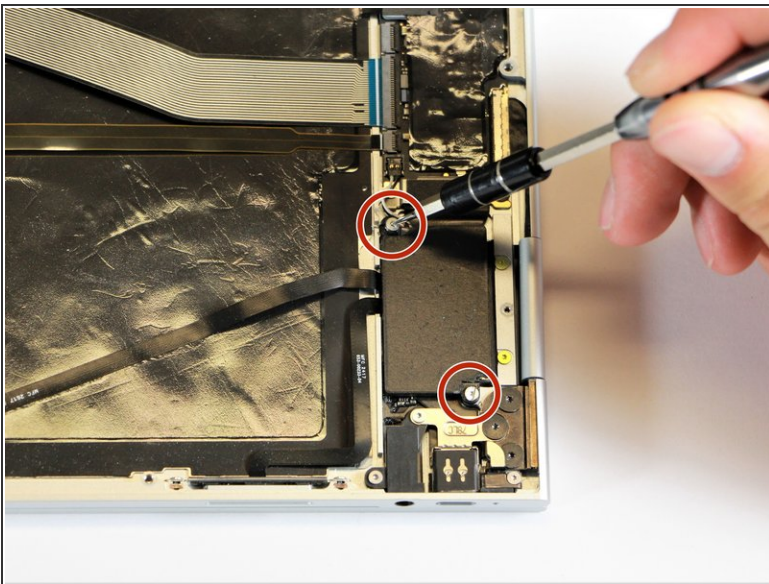
- Remove the small, black casing by using the spudger to lift it up from its place.

Step 7



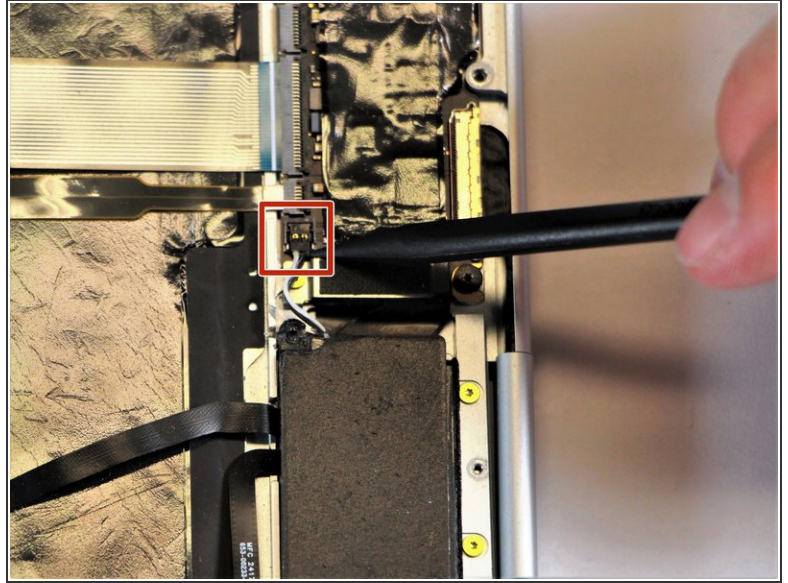
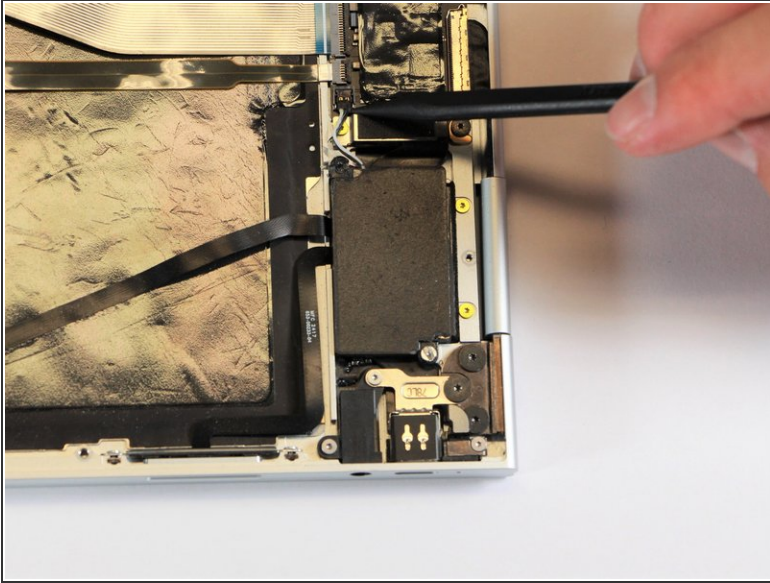
- Disconnect the flat, black cord from the main component by using a spudger to push it out of the slot, or by using your hand to carefully pull it out.
- Your back panel is now free from the main component.

Step 8 — Left Charging Port



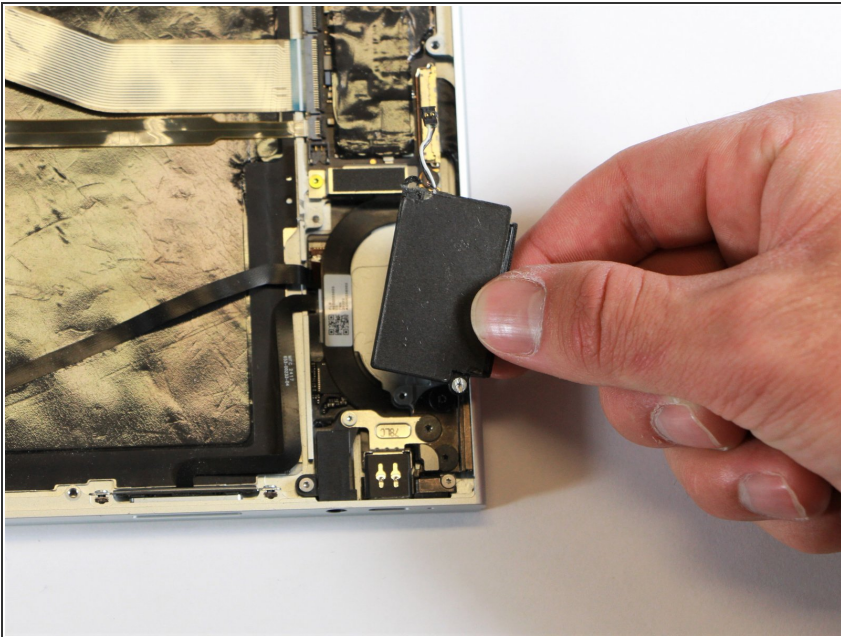
- Remove the two 3.0mm silver screws from the thin, black component by using a T3 Torx screwdriver to turn the screws counterclockwise.

Step 9



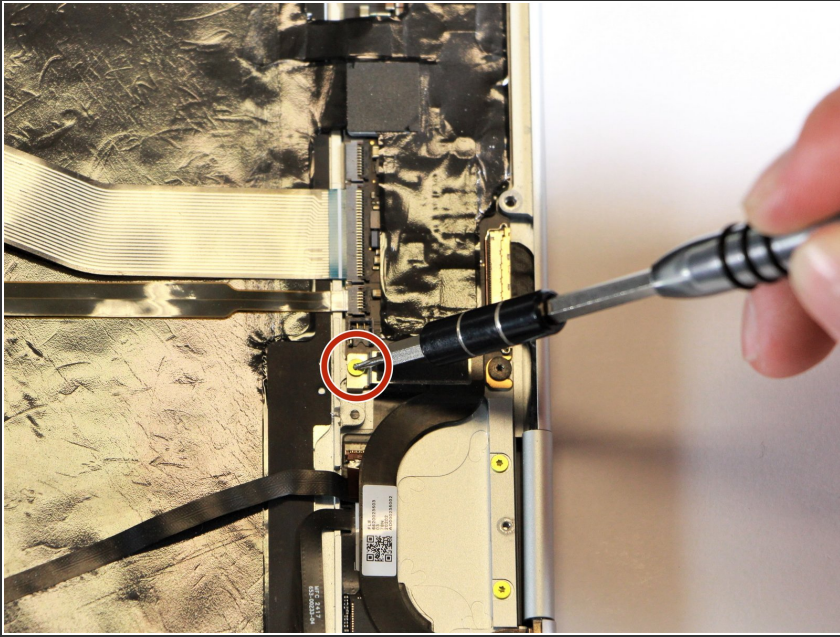
- Disconnect the thin, black and white cord from the motherboard by using the spudger to snap the connector up and out of place.

Step 10



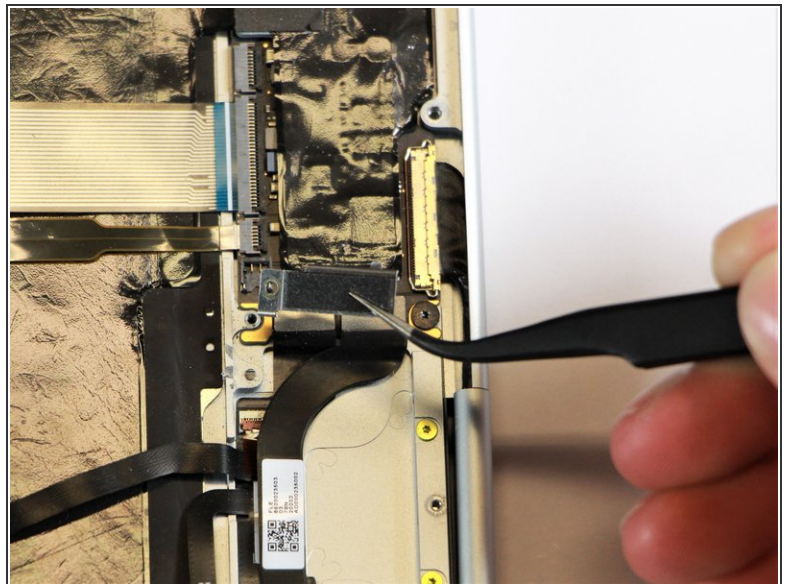
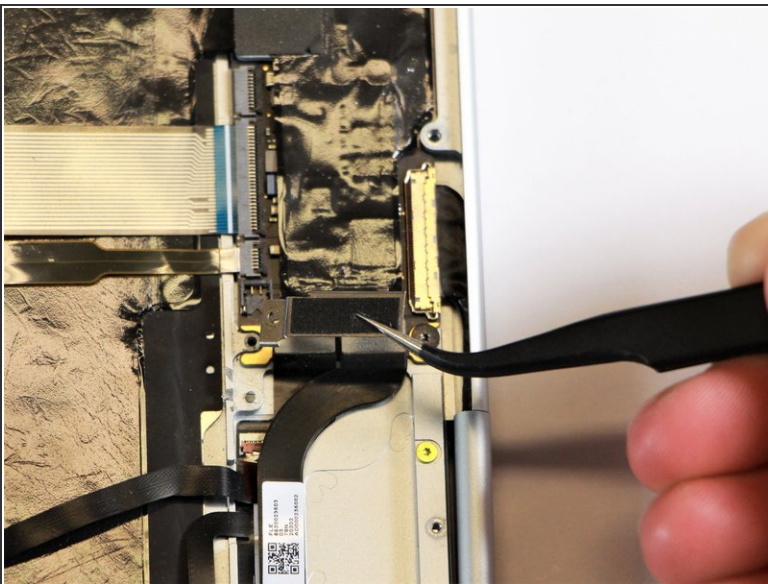
- Remove the thin, black component by pulling it up and out of the laptop with your fingers.
- ⓘ This photo shows the bottom screw still in the black box, but yours should be removed.

Step 11



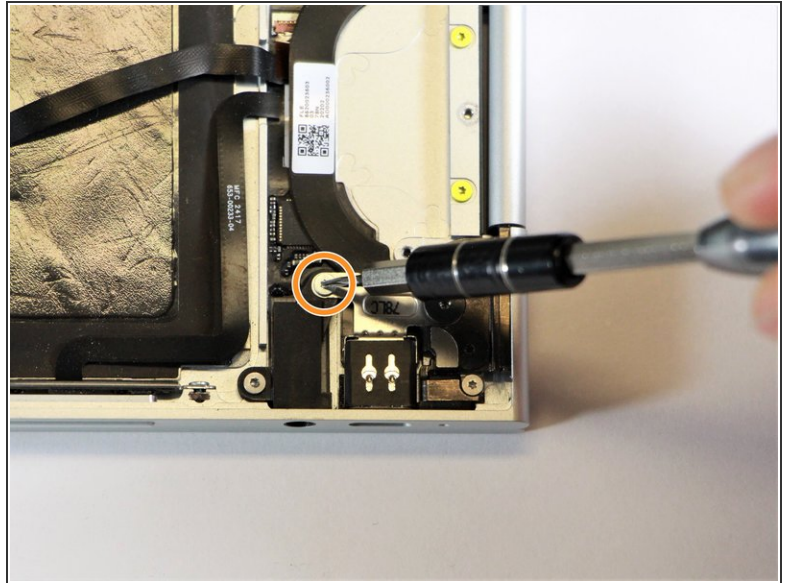
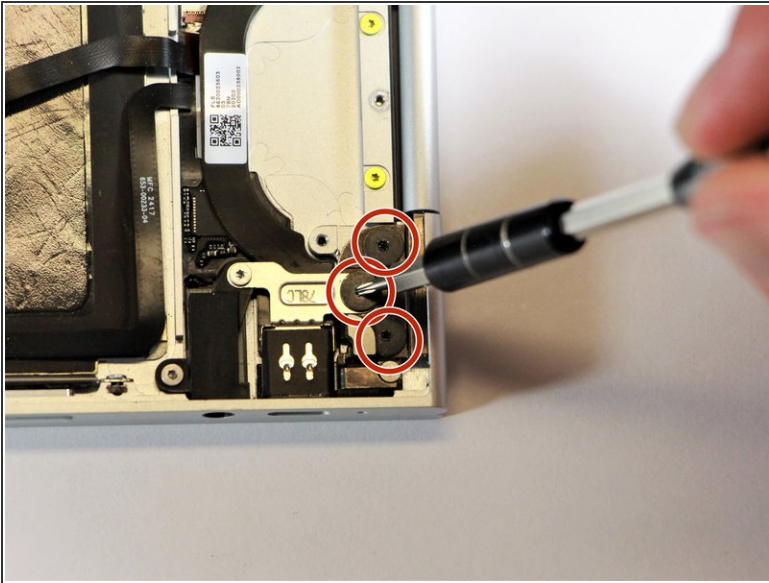
- Remove the gold 2.0mm corner screw by turning it counterclockwise with a T3 Torx screwdriver.

Step 12



- Using needle-nose tweezers, remove the silver casing by lifting it up and out of the computer.

Step 13



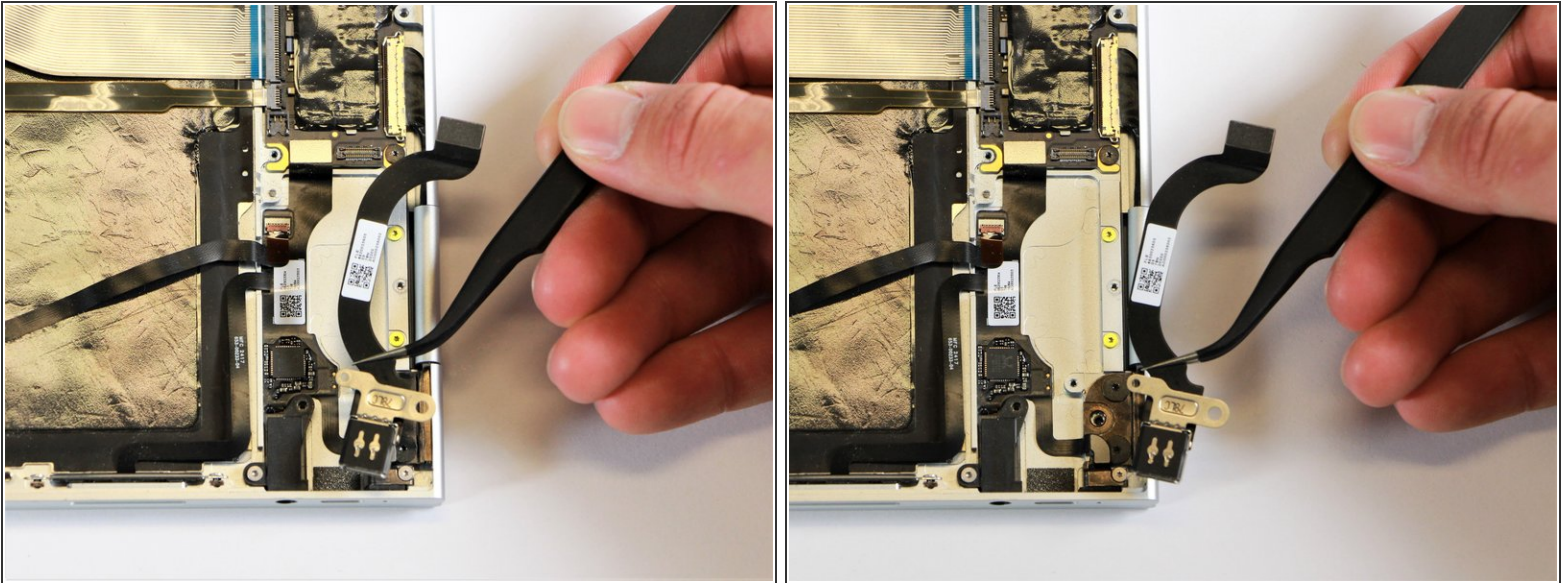
- Remove the three 3.0mm black screws on the right side by using a T5 Torx screwdriver to turn the screws counterclockwise.
- Remove the silver 2.0mm screw on the left side by using a T3 Torx screwdriver to turn the screw counterclockwise.

Step 14



- Disconnect the thin, black ribbon cable by using the spudger to lift it up from the computer.

Step 15



- Use the needle-nose tweezers to remove the charging port by lifting the component up and out of the Pixelbook.

To reassemble your device, follow these instructions in reverse order.