



PlayStation 3 Wireless controller "Dualshock III" (replica) Disassembly

This guide will help you (dis)assemble a game controller.

Written By: Irene van Heijningen



INTRODUCTION

In this guide we are going to disassemble a playstation 3 controller.



TOOLS:

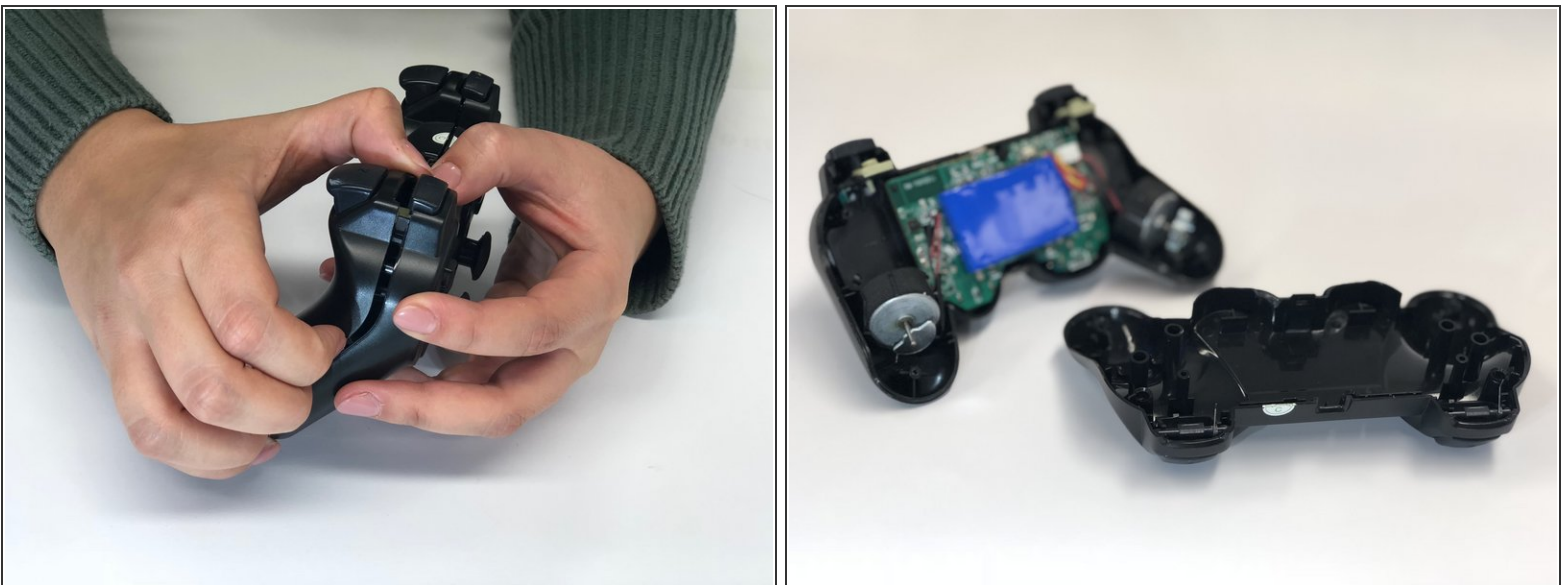
- [Phillips #0 Screwdriver](#) (1)
 - [Curved Needle Nose Pliers](#) (1)
-

Step 1 — PlayStation 3 Wireless controller "Dualshock III" (replica) Disassembly



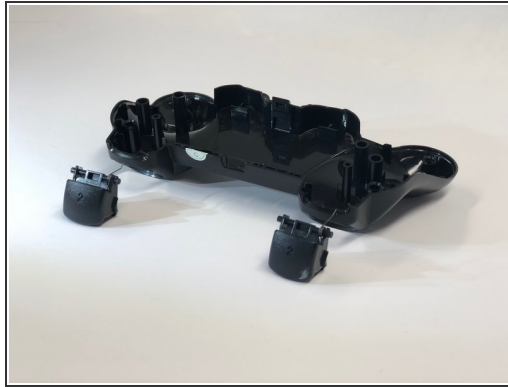
- Remove the five 7.2 mm Phillips screws at the back of the controller.

Step 2



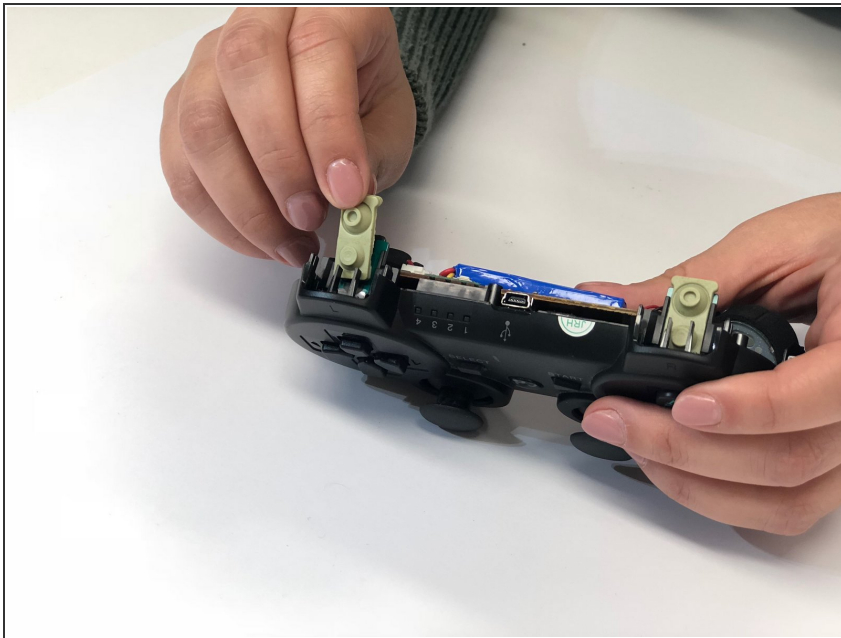
- Separate the bottom case from the upper part. All the electronics stay in the upper part.

Step 3



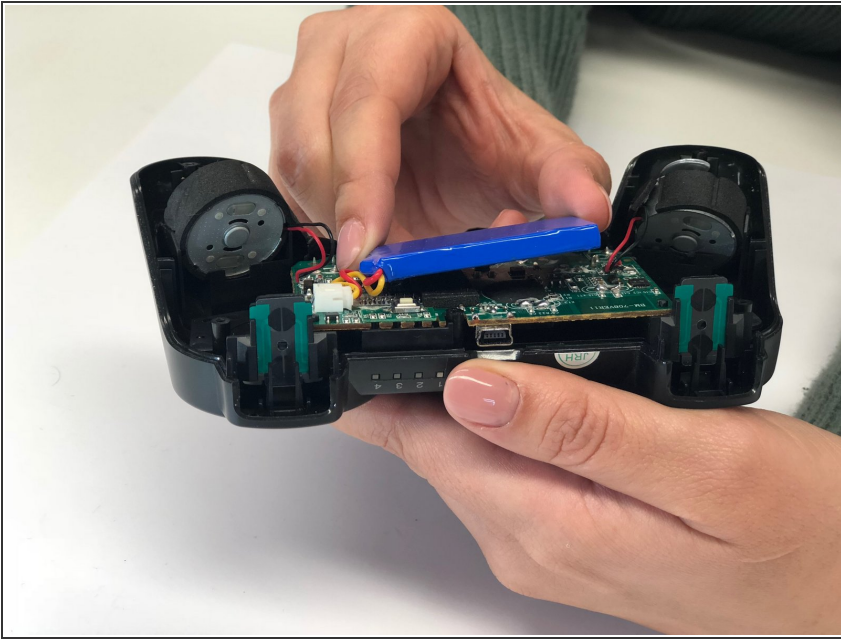
- Remove the left and right bumper buttons (L1, L2, R1 and R2).

Step 4



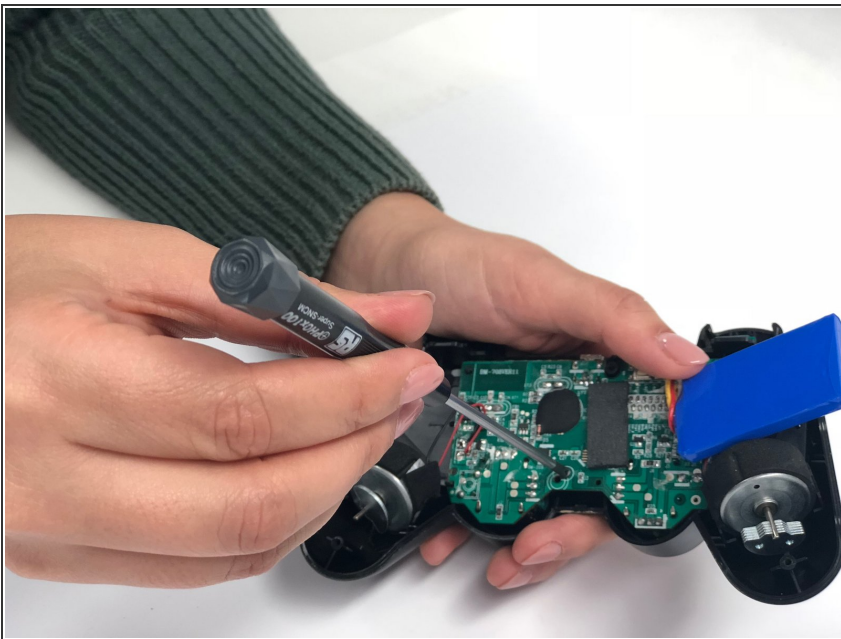
- Remove the rubber underlays of the buttons L1, L2, R1 and R2.

Step 5



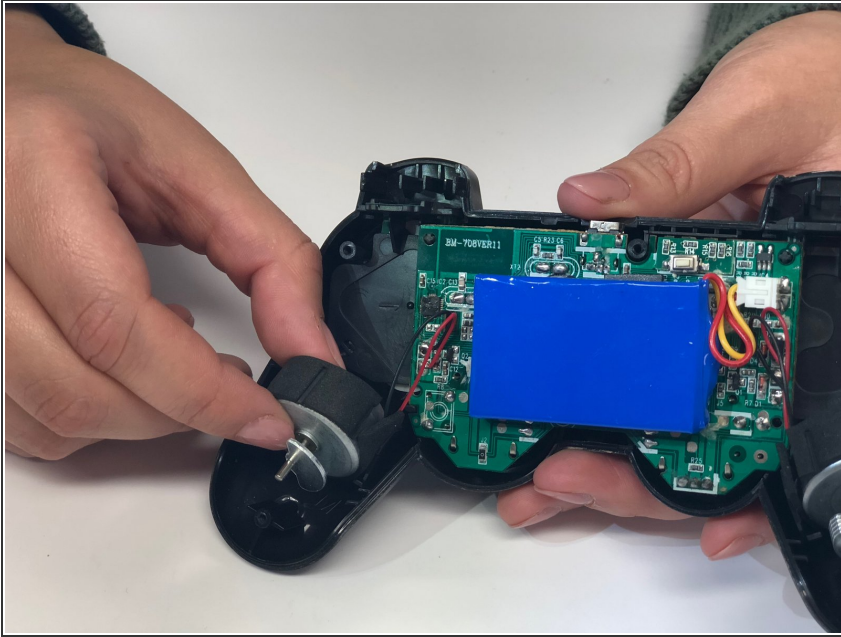
- Take the battery off the PCB (printed circuit board).
- ⓘ The battery sticks to the PCB through a sticking black surface.

Step 6



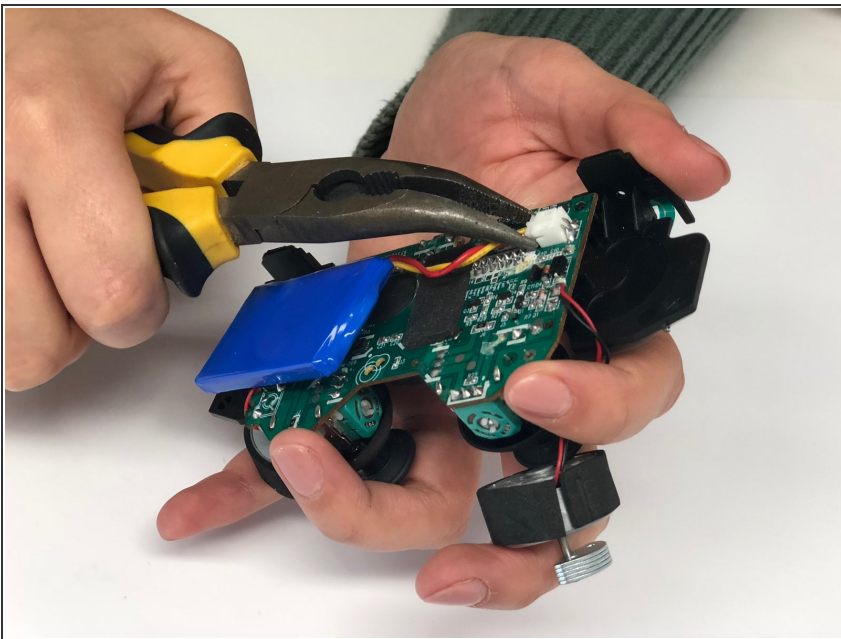
- Unscrew the remaining 7.2 mm Phillips screw from the PCB.
- ⓘ All screws are the same.

Step 7



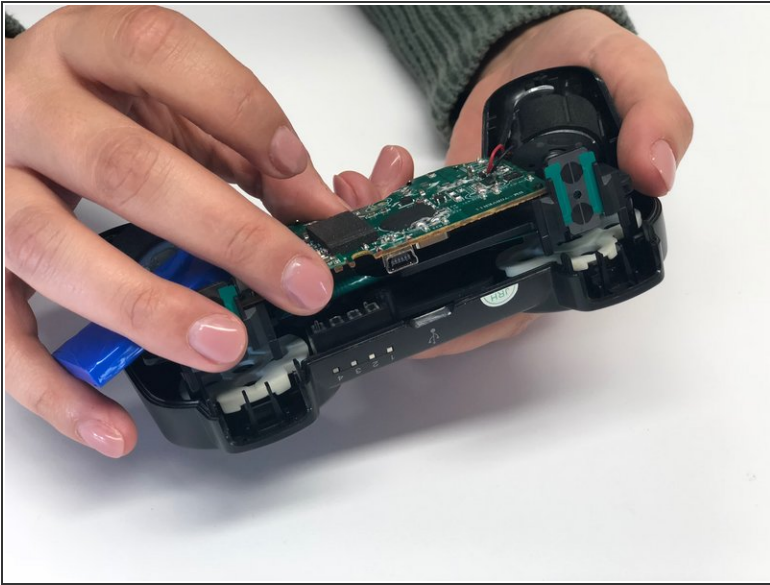
- Take the vibrating components out.

Step 8



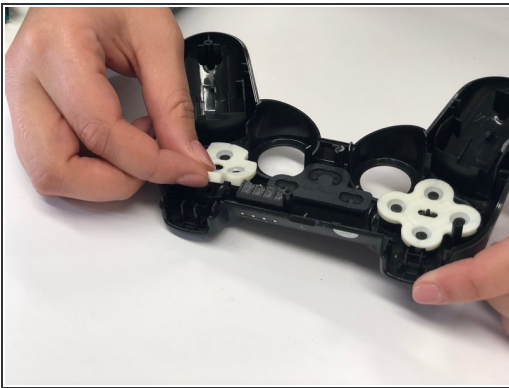
- Unplug the battery from the PCB by using a pair of pliers as shown in the photo.

Step 9



- Take the motherboard (PCB) out of the plastic controller case.

Step 10



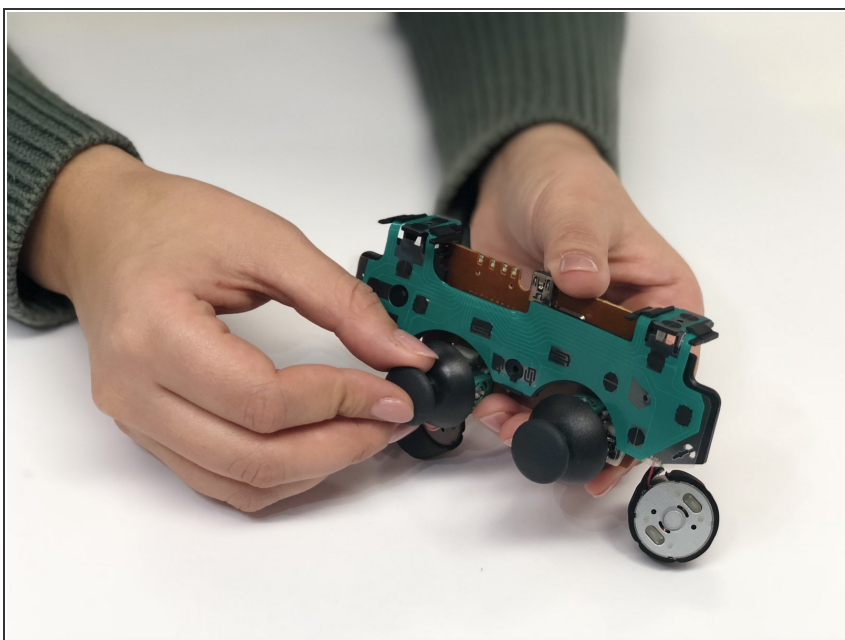
- Remove all loose parts from the body. (Consisting of white rubber button underlays, black plastic buttons and a black rubber underlay for the start and select button.)

Step 11



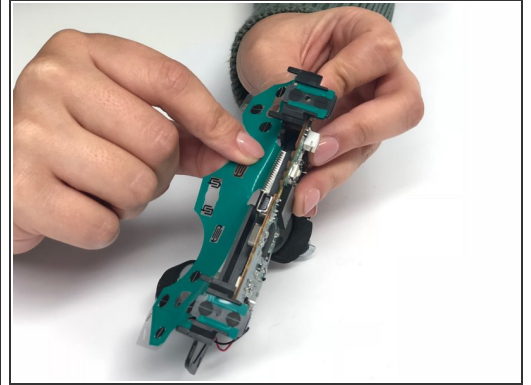
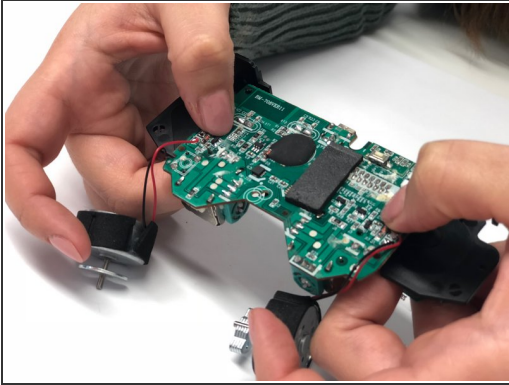
- Remove the transparent plastic part covering the LED-lights by taking it out with a pair of pliers.

Step 12



- Pull the joy sticks out.

Step 13



- Remove the thin flexible green PCB by pulling out the black plastic circuit board cover, relatively in the middle the motherboard (the hard PCB) and by pressing click fingers on top of the motherboard.

Step 14



- Remove the thin flexible green PCB by lifting and pushing the two outer flaps.

To reassemble your device, follow these instructions in reverse order.