



Best Budget Kettle Disassembly

This guide shows you how to fully disassemble the plastic Best Budget Kettle of 'Blokker'.

Written By: Olivia Burke



INTRODUCTION


This guide shows you step-by-step how to fully disassemble the Best Budget Kettle. This way you can extensively clean the product and/or replace any torn down parts. This 2200 watt kettle has a capacity of 1.7 liter and is one of the cheapest of its kind.

TOOLS:

- [Three wing screwdriver](#) (1)
 - [Metal Spudger](#) (1)
 - [Phillips Screwdriver](#) (1)
-

Step 1 — Best Budget Kettle Disassembly



 Fully assembled kettle.

Step 2



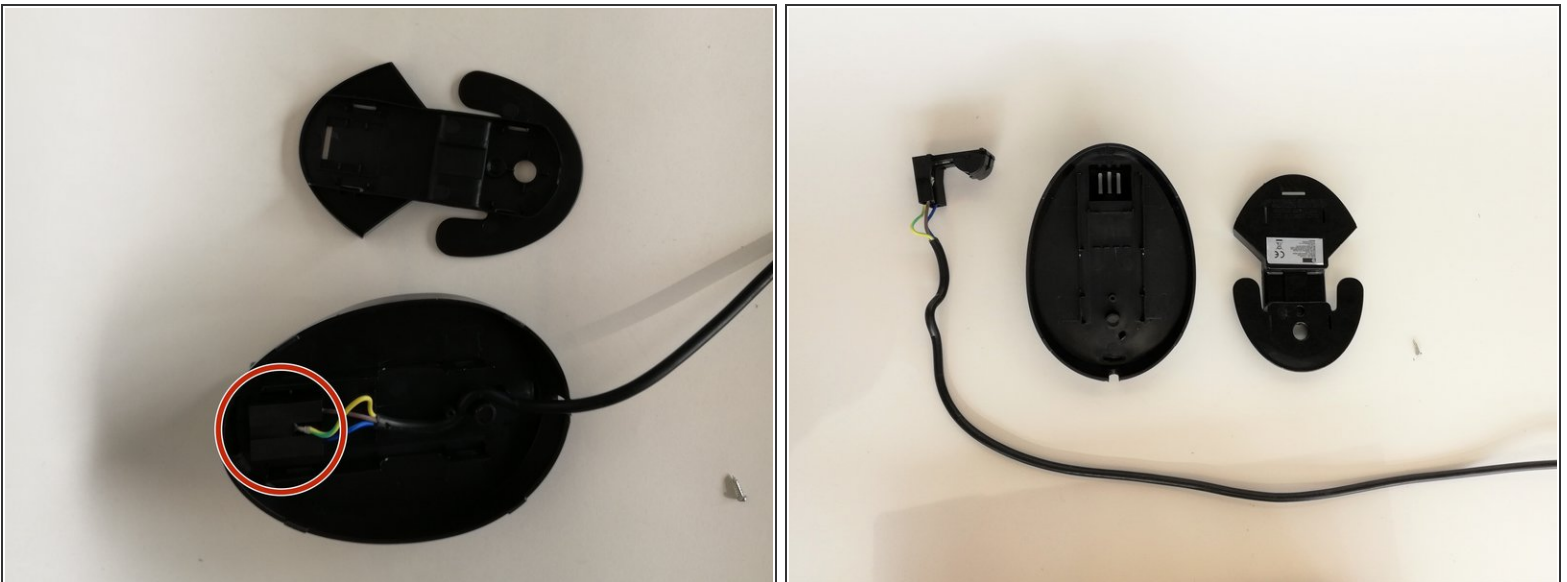
- Using the three-winged screwdriver, remove the three-winged screw from the bottom of the hot plate.

Step 3



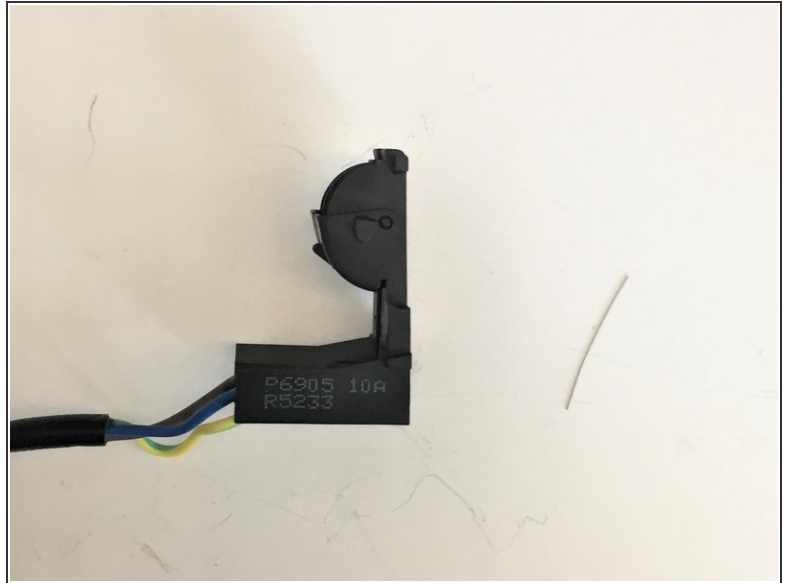
- Release the snap fits by sliding the metal spudger into each of the 4 slots and pressing the spudger to the side and pulling up on the cover.
- This step is difficult to do with one person. We found it helpful to have one person holding the base and pulling up on the piece that was separating, while another person released the snapfits with the spudger.

Step 4



- Remove the electrical subassembly from the base of the hot plate; it will lift out with no resistance.

Step 5



- Remove the wire spring from the electrical subassembly by sliding it out of the hook on the hinge and pulling it off of the subassembly.

Step 6



- Remove the hood of the electrical subassembly by pulling on one side of the hood to release the snapfit hinge.

Step 7



- Using the three-winged screwdriver, unscrew two three-winged screws from the top of the handle cover and two three-winged screws from the bottom of the handle cover and separate the handle cover from the kettle
- Watch out not to ruin them by using the wrong tools (as in the second picture), because the screws are not that high quality.

Step 8



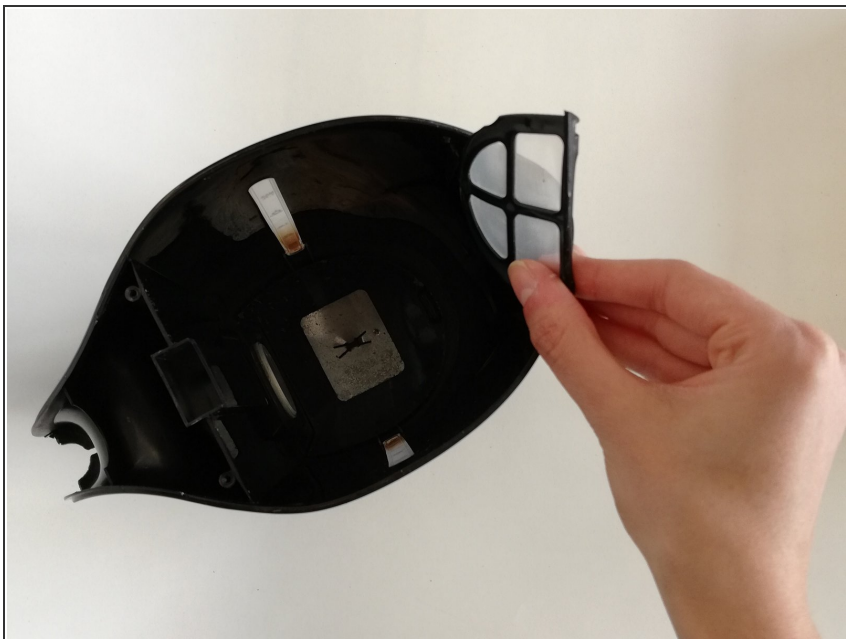
- Using the Phillips head screwdriver, unscrew two Phillips head screws from the underside of the lid to separate the lid handle from the lid.

Step 9



- Remove the on/off switch by pulling apart the snap fits and sliding the switch out of the hole in the handle.

Step 10



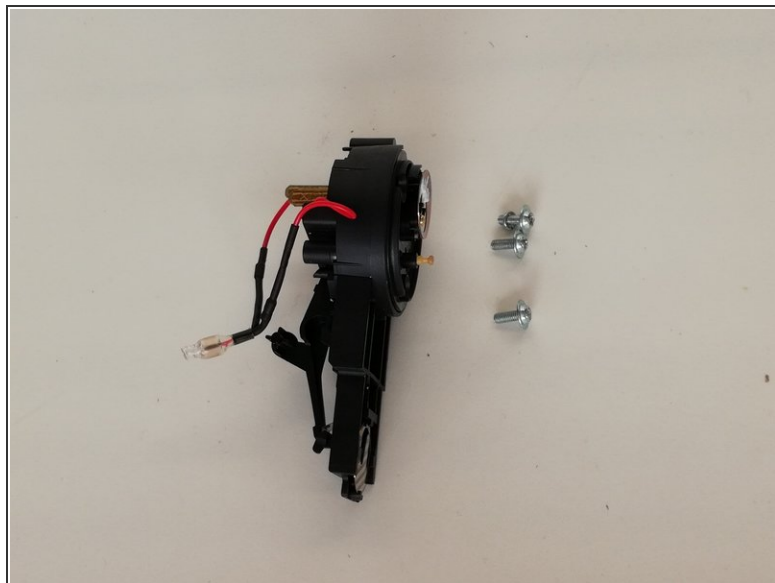
- Remove the filter from the kettle by pulling up on it in order to slide it out of the tracks it is in.

Step 11



- Using the Phillips head screwdriver, unscrew the three Phillips head screws in the handle.

Step 12



- Pull the electronic part out of the kettle.

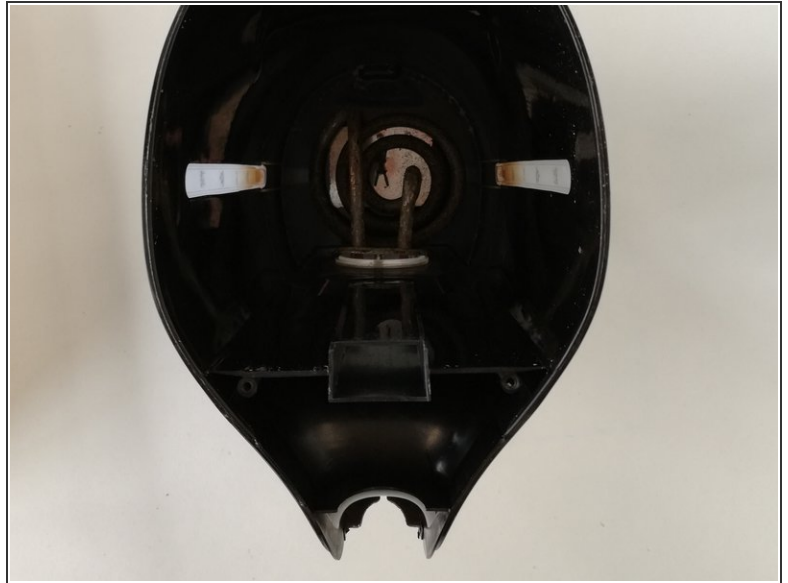
⚠ Watch out because the screws attached to the electronic part will come loose too.

Step 13



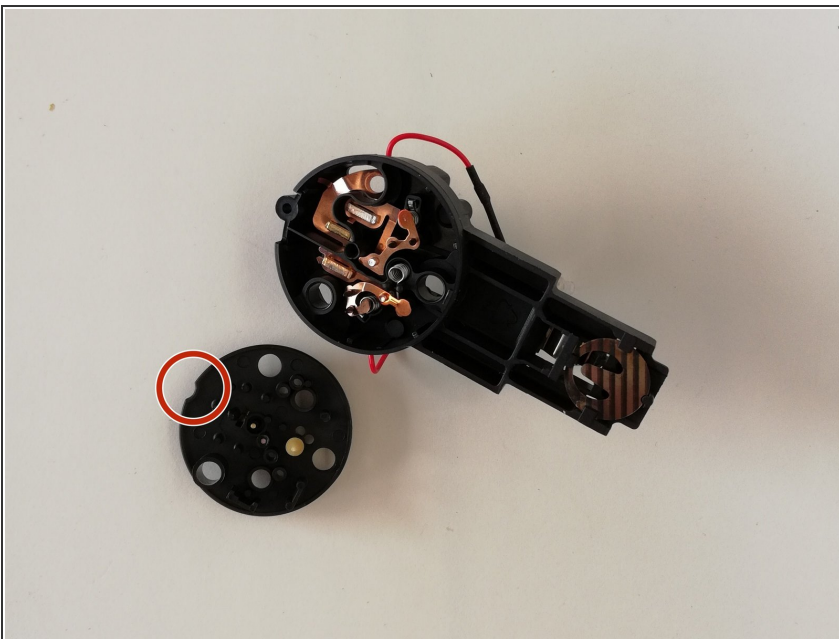
- Remove the silicone ring from the hole in which the heating element was placed. It can be easily removed by pulling on it.

Step 14



- Get the heating element out of the kettle. It has to be removed from the inside.
- It can be easily lifted out with no resistance.

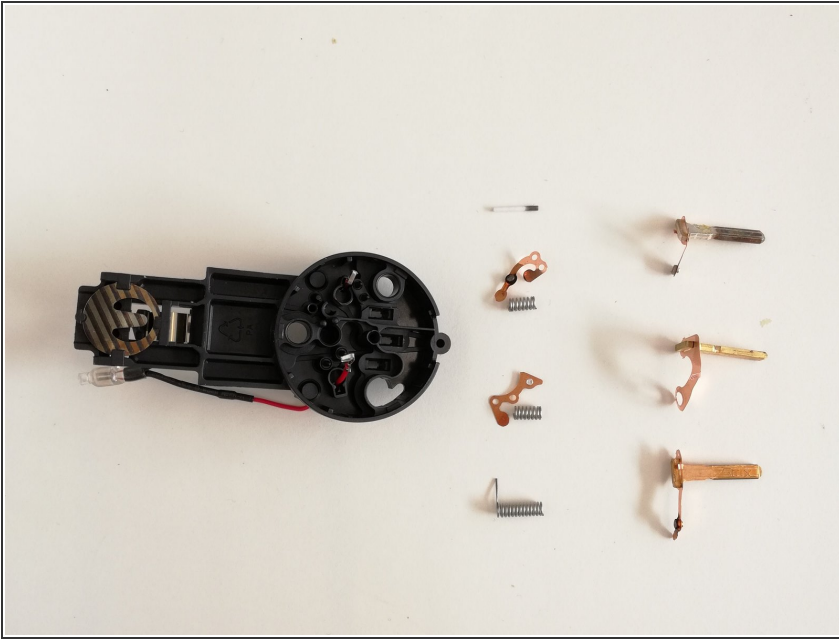
Step 15



- Click the lid off the electronic component by pulling the notch.

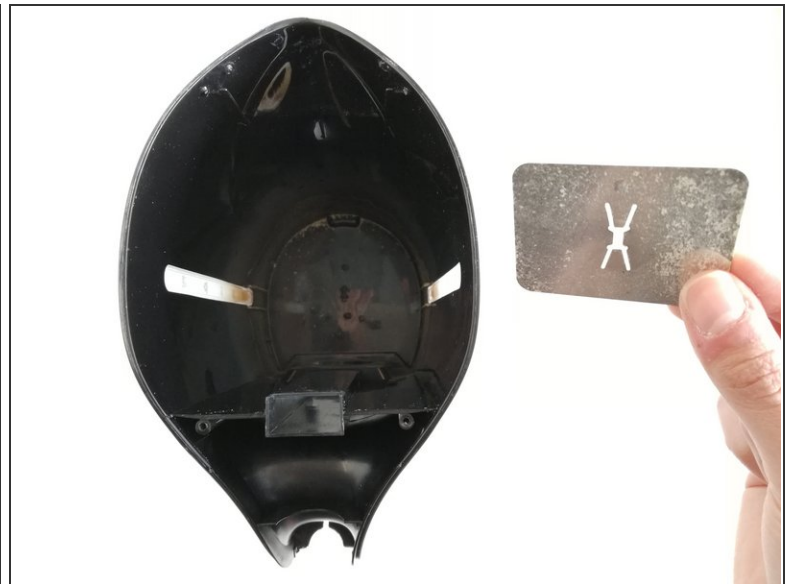
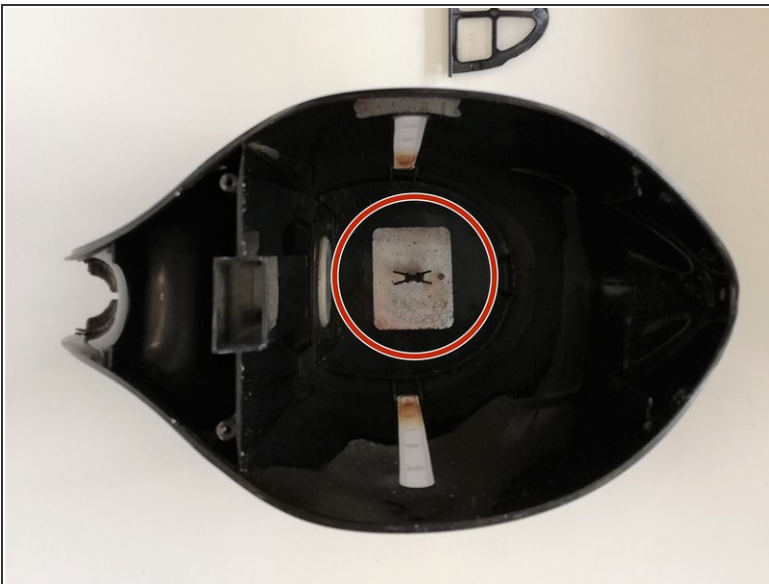
⚠ Watch out because things will come loose and fall out.

Step 16



- Remove all parts from the electronic part. The copper parts and the springs can be removed by hand.
- Push the part with the side where the prongs stick out against a hard surface to pop out the prongs. Then by pulling they can be removed.
- The wires cannot be removed without breaking them.

Step 17



- Remove the metal plate from the bottom of the inside of the kettle by pulling up on it to release it from its snapfit.

Step 18



- Fully disassembled kettle.

To reassemble your device, follow these instructions in reverse order.