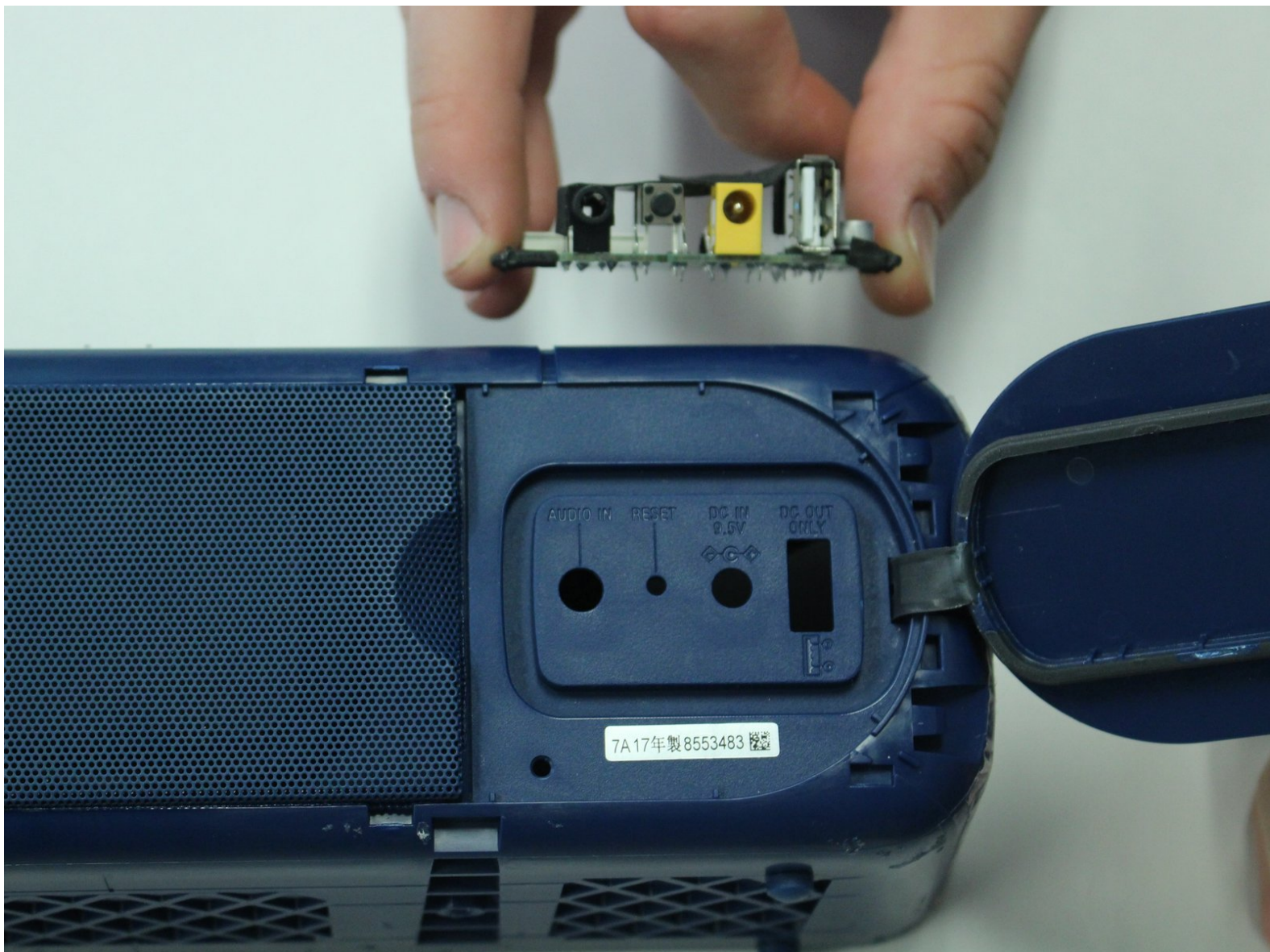




# Sony SRS-XB40 Auxiliary Input Replacement

Removing and Replacing the Auxiliary Input Port.

Written By: Shelby Ramsey



---

## INTRODUCTION

In order to replace the auxiliary input port, you will need to follow the prerequisite guide to get to the internal part of the speaker and remove it from the speaker structure. This guide is moderately difficult and you must complete the steps in order to get the piece you need to replace.



### TOOLS:

- [T8 Torx Screwdriver](#) (1)
  - [Metal Spudger](#) (1)
  - [64 Bit Driver Kit](#) (1)
  - [Phillips #1 Screwdriver](#) (1)
-

## Step 1 — Speaker Assembly Replacement



- Remove the speaker case from the outer casing by prying it from the base of the speaker using a metal spudger.

## Step 2



- Remove the four T-8 screws (15 mm long) from the black speaker face.



### Step 3



- Pry the two rubber end pieces loose enough to pry off two pieces of the long plastic casing from the speaker body using a metal spudger.

### Step 4



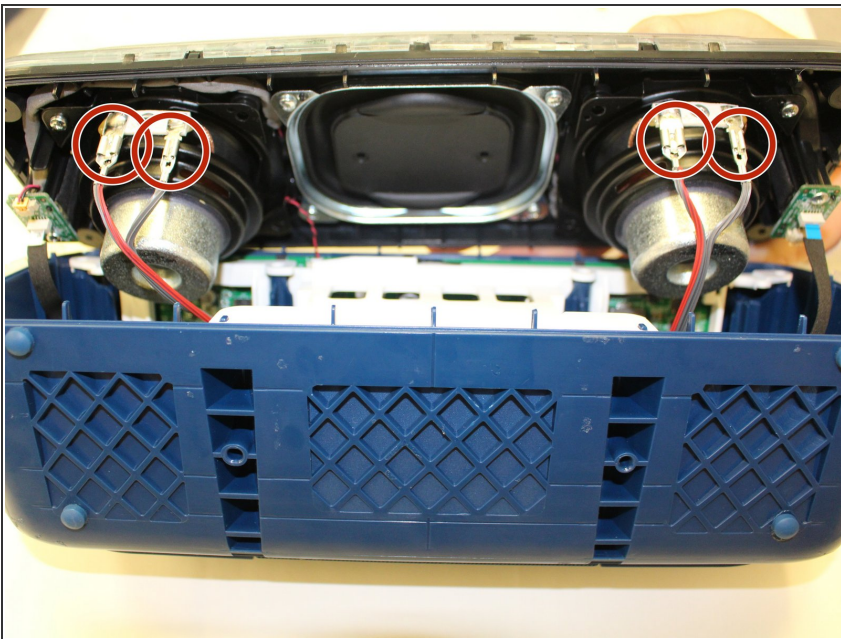
- Pry the two remaining rubber pieces of the casing completely away from the body of the speaker with the same metal pry tool.

## Step 5



- Once you have removed the outer blue casing, four T-8 screws (15 mm long) will be revealed on each corner. After removing these screws, simply pull the top part of the speaker way from the body to get the the inner part of the speaker.

## Step 6



- Once you have gotten to the internal parts of the speaker, there are seven wires connecting the speaker plate to the body of the speaker. Pinch the release tabs at the top of each of the four main wires to remove them.

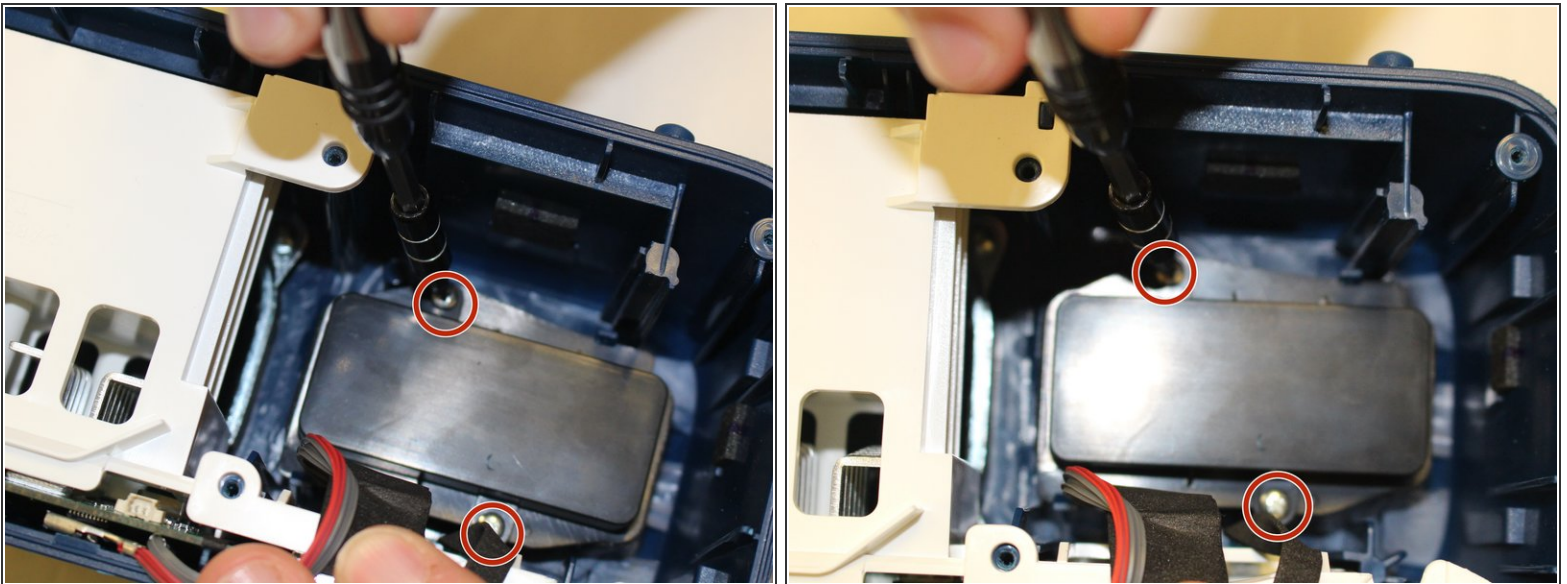


## Step 7



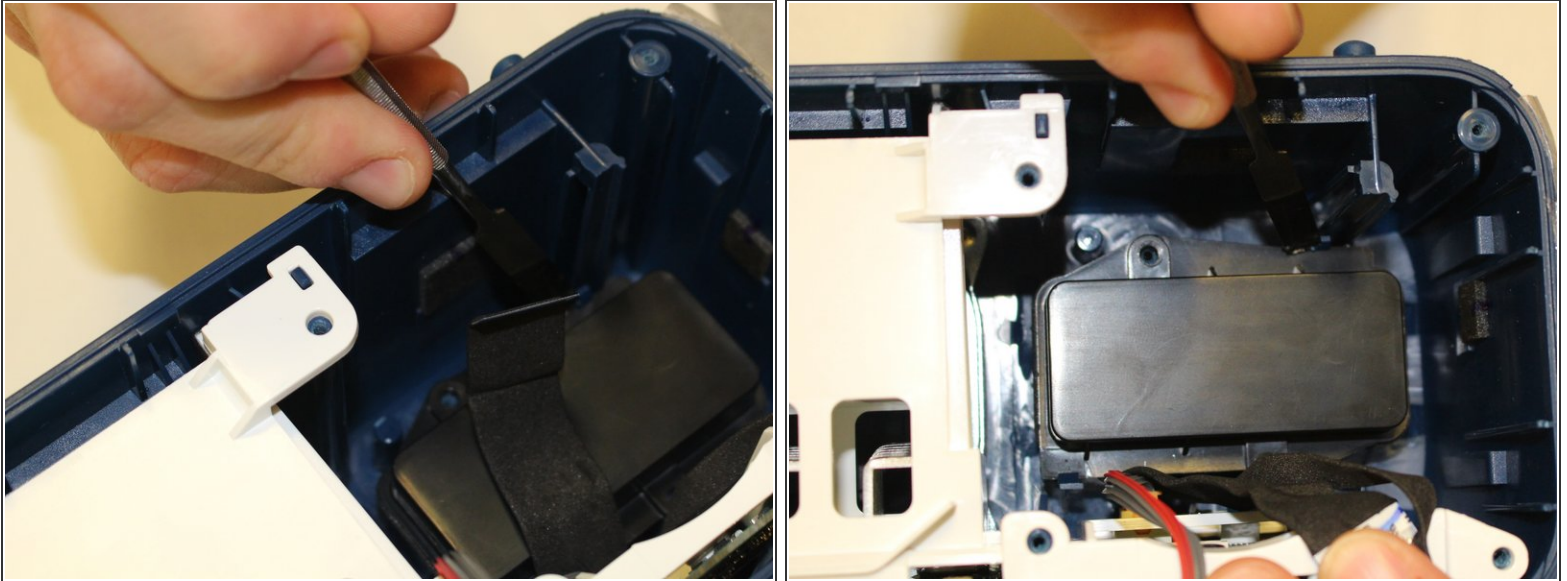
- Simply pull the thin wires on each side to remove them from their attachment points.
- Remove the final red and black wire by gently pulling it apart.
- This will ultimately detach the speaker plate from the base.

## Step 8 — Auxiliary Input



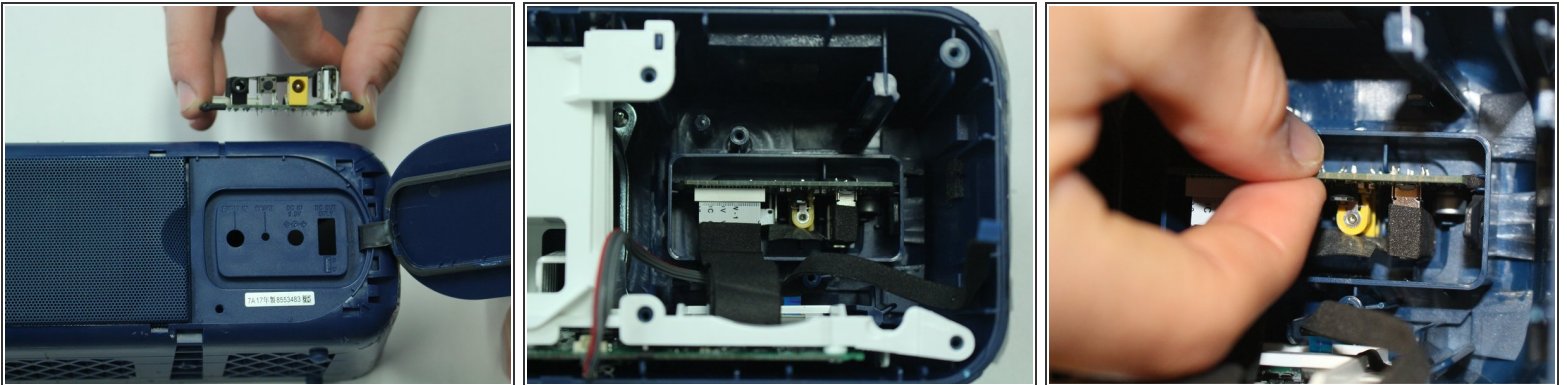
- Unscrew the PH 1 (10 mm) screws from the black outer casing of the auxiliary port.

## Step 9



- After removing the screws, pry the black cover from the base of the speaker on both sides using a metal spudger.

## Step 10



- Once the black casing has been removed, you can pull the auxiliary port out of the inside of the speaker.
- ⓘ The Auxiliary input is attached to the USB port and reset button. One new part will replace all three components of the speaker.

To reassemble your device, follow these instructions in reverse order.

This document was generated on 2020-11-28 06:31:00 AM (MST).

