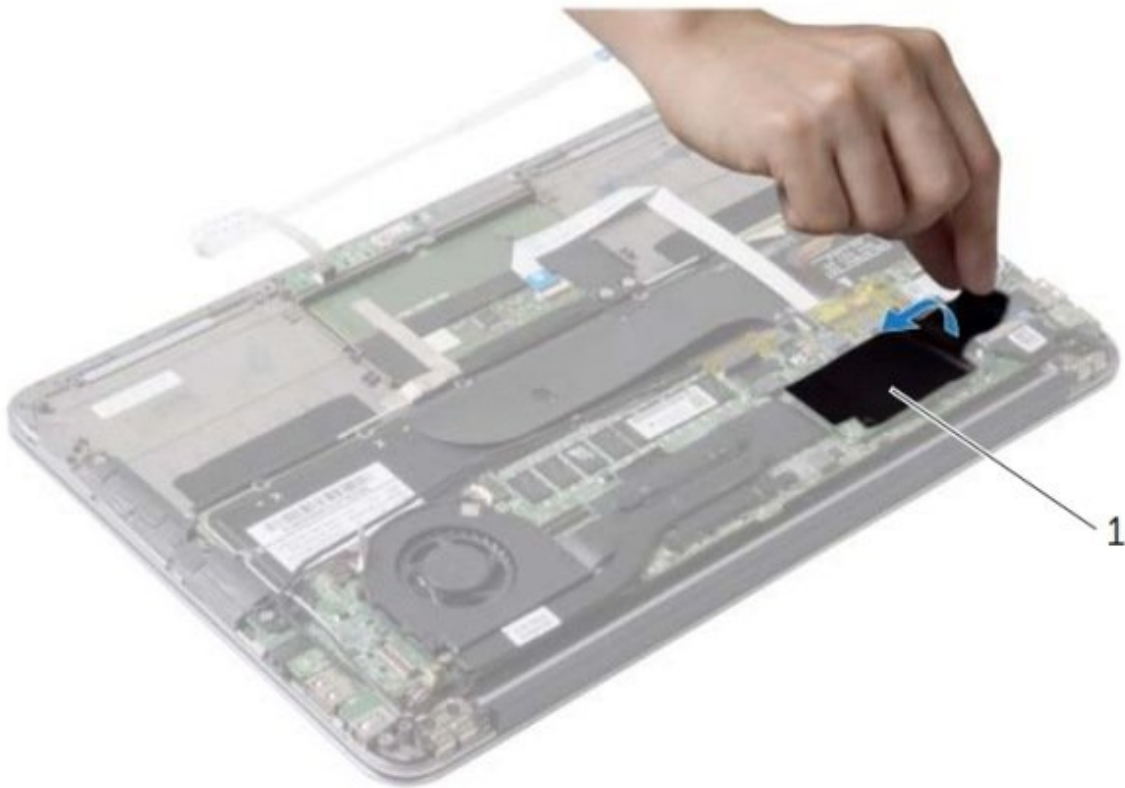




Dell XPS 13 9333 Solid-State Drive Replacement

Written By: Johnathan Hammond



INTRODUCTION

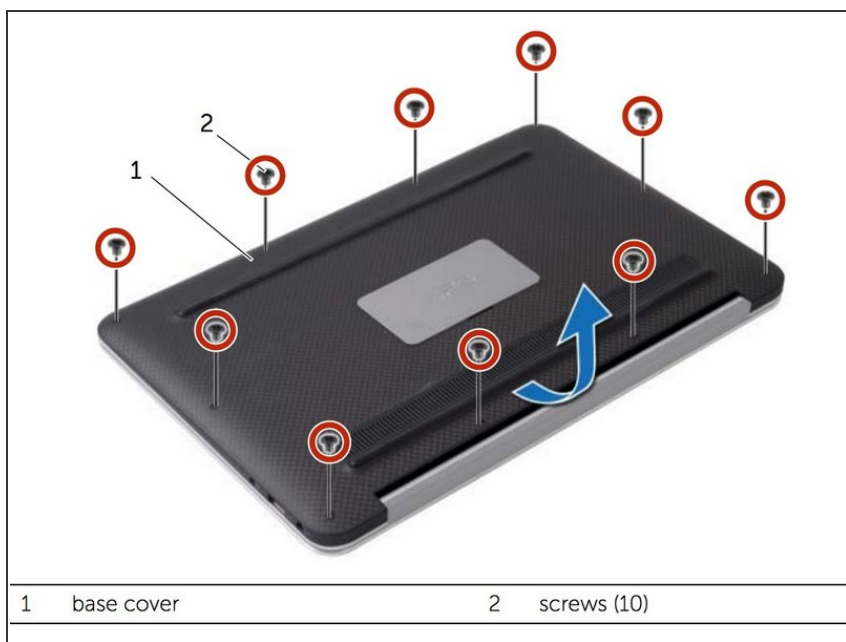
In this guide, we will be showing you how to remove and replace the Solid-State Drive.




TOOLS:

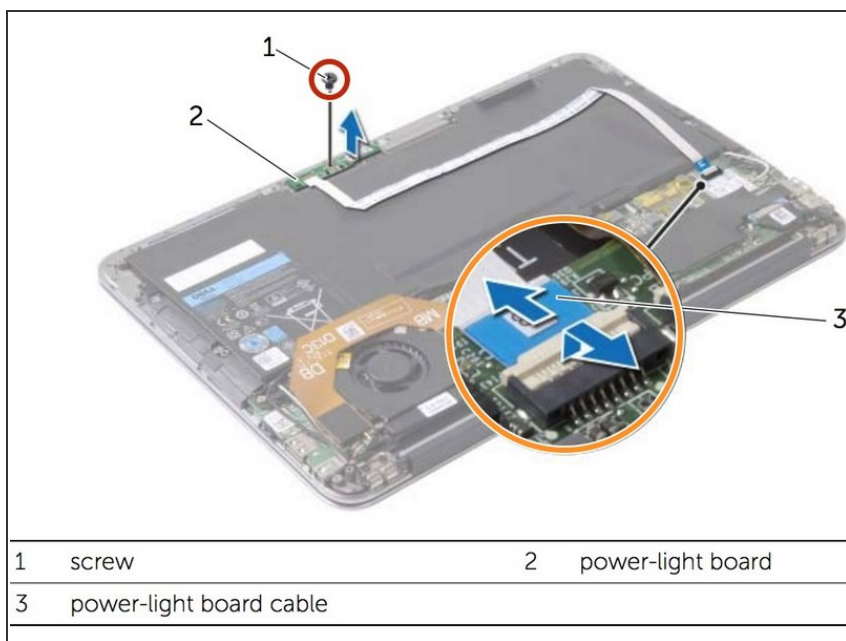
- [Phillips #0 Screwdriver](#) (1)
-

Step 1 — Battery



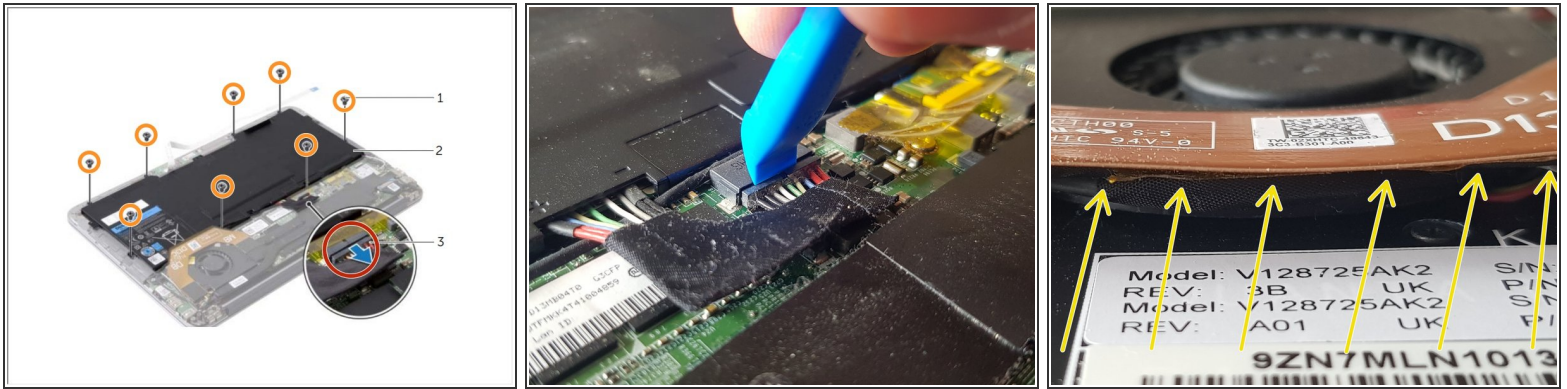
-  Be sure to power off and unplug your device before you begin your repair.
- Using a Torx T5 screwdriver, remove the ten screws that secure the base cover to the palm-rest assembly.
- Starting from the back of the computer, pry up the base cover using your fingertips. Then lift the base cover off the palm-rest assembly.

Step 2



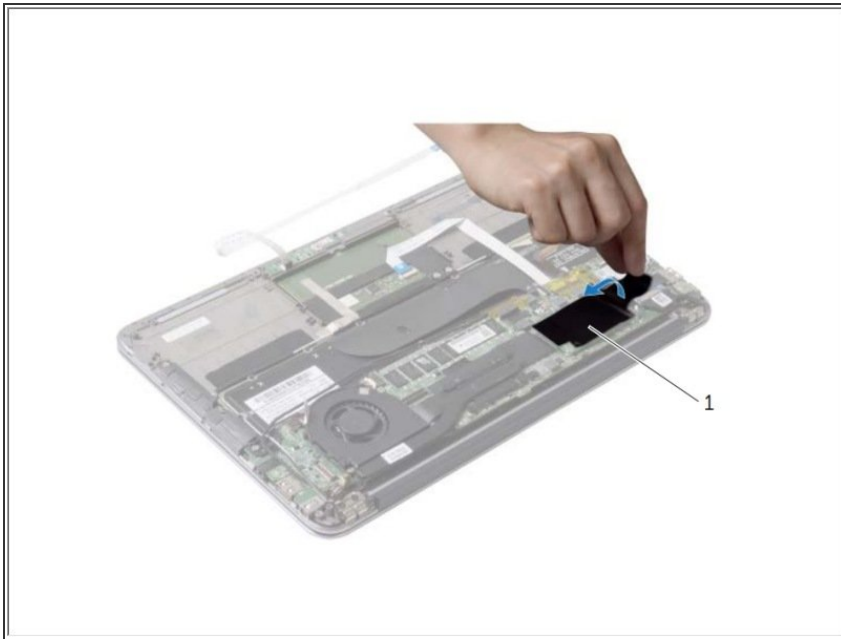
- Remove the screw that secures the power-light board to the palm-rest assembly.
- Unlock the motherboard's power-light socket by lifting the locking latch.
- Carefully pull the power-light cable's blue tab to slide the cable out of its motherboard socket.
- Lift and remove the power-light board and cable.

Step 3 — Disconnecting the Battery Cable



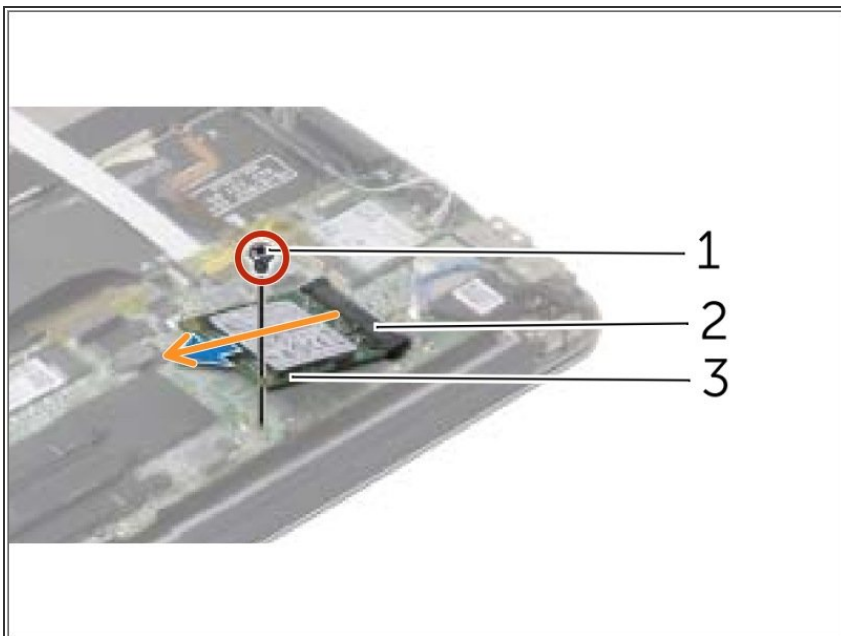
- Carefully pull the battery connector away from the battery to disconnect it from the motherboard. You may find it helpful to insert an iFixit Opening Tool to gently separate the connector from the housing.
- ⚠ Pull parallel to the motherboard, not straight up, or you will damage the socket.
- Use a Phillips screwdriver to remove the eight screws securing the battery.
- Release the tape underneath the U-shaped hard ribbon connector. There is no need to remove the U-shaped band completely, gently lift the section overhanging the battery and pull back the corners of the tape from the top of the battery upwards. You can use long/fine tweezers to lift the tape completely free of the battery, working from each end.
- Lift the battery off the palm-rest assembly.

Step 4 — Solid-State



- Peel the tape that is adhered over the solid-state drive.

Step 5 — Remove Old SSD



- Remove the screw that secures the solid-state drive to the system board.
 - Slide and remove the solid-state drive out of the solid-state drive connector.
- ☒ If this is all you are doing Follow Step In Reverse if not Go to Next Step.

To reassemble your device, follow these instructions in reverse order.