



Sony Vaio Fit SVF15N26CXB Hard Drive Replacement

Replace the Sony Vaio Fit SVF15N26CXB hard drive so that computer and application startup and processing improves.

Written By: Althea McDavid



INTRODUCTION

This guide will show you how to identify and properly remove the hard drive for the Sony Vaio Fit SVF15N26CXB. Use the project mat to keep the screws organized.

TOOLS:

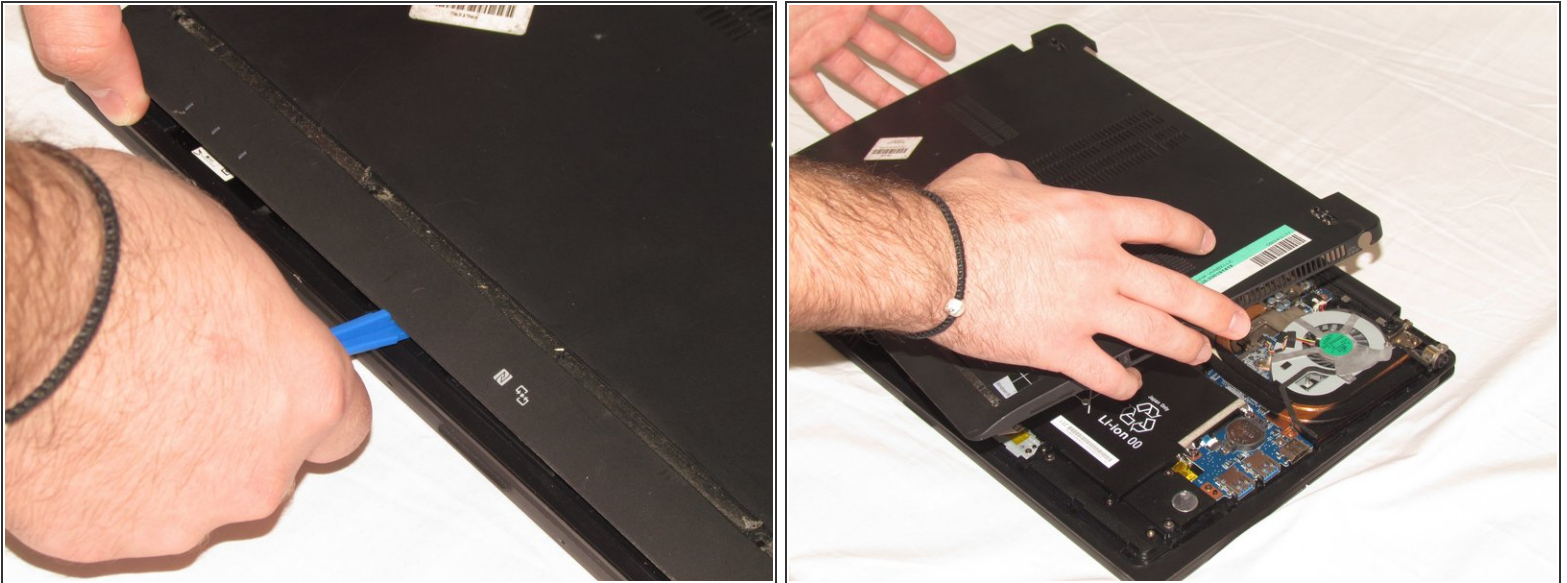
- [iFixit Opening Tools](#) (1)
 - [Anti-Static Wrist Strap](#) (1)
 - [Phillips #00 Screwdriver](#) (1)
 - [Magnetic Project Mat](#) (1)
-

Step 1 — Battery



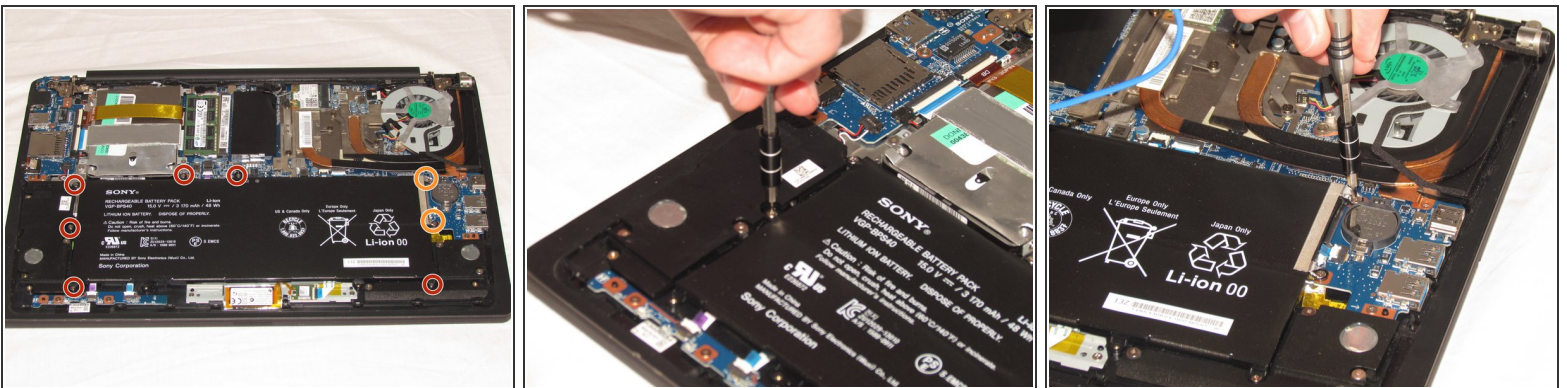
- Remove the following ten screws from the bottom case of the laptop:
 - Two 6.5mm Phillips #00 Phillips screws.
 - Four 8.95mm Phillips #00 screws.
 - Four 6.25mm Phillips #00 screws.
- ⓘ The screws may be hidden underneath a rubber foot that can be removed with a spudger.

Step 2



- Use a plastic opening tool to separate the bottom cover from the laptop.
- Lift the lower cover and pull away from the laptop.

Step 3



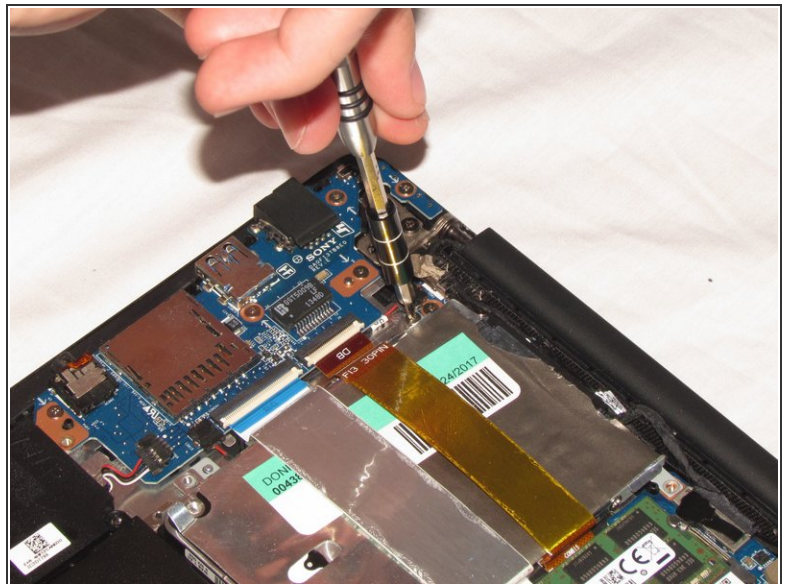
- Remove the eight Phillips #00 screws from the battery:
 - Six 4.65mm screws.
 - Two 4.65mm screws.

Step 4



- Lift the battery up and pull it out of the laptop.

Step 5 — Hard Drive



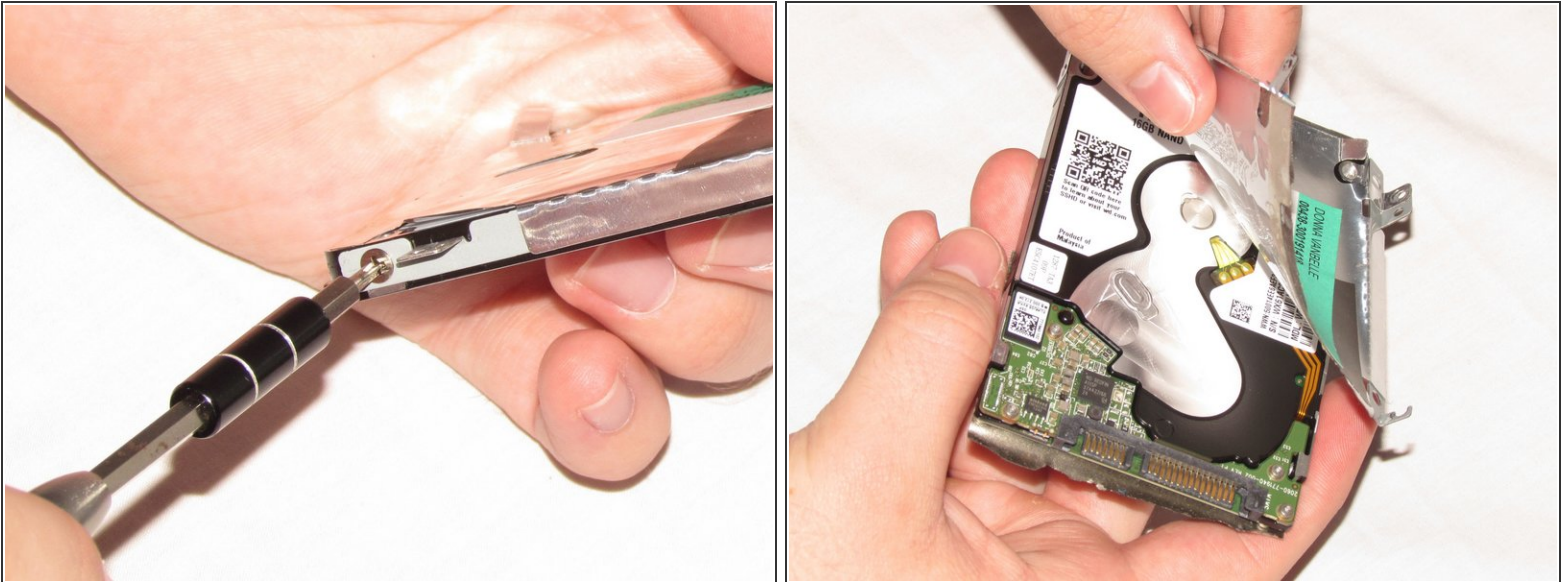
- Remove the four 3.20mm Phillips #00 screws from the hard drive.

Step 6



- Use a spudger to flip up the black latch on the ZIF connectors.
- Pull the ribbon cables out of the ZIF connectors and fold them over the hard drive.
- Disconnect the hard drive and remove.

Step 7



- Remove the four 3.70mm Phillips #00 screws from the hard drive mounting case.
- Carefully peel foil tray off of hard drive.

To reassemble your device, follow these instructions in reverse order.

This document was generated on 2020-11-28 06:32:04 AM (MST).

