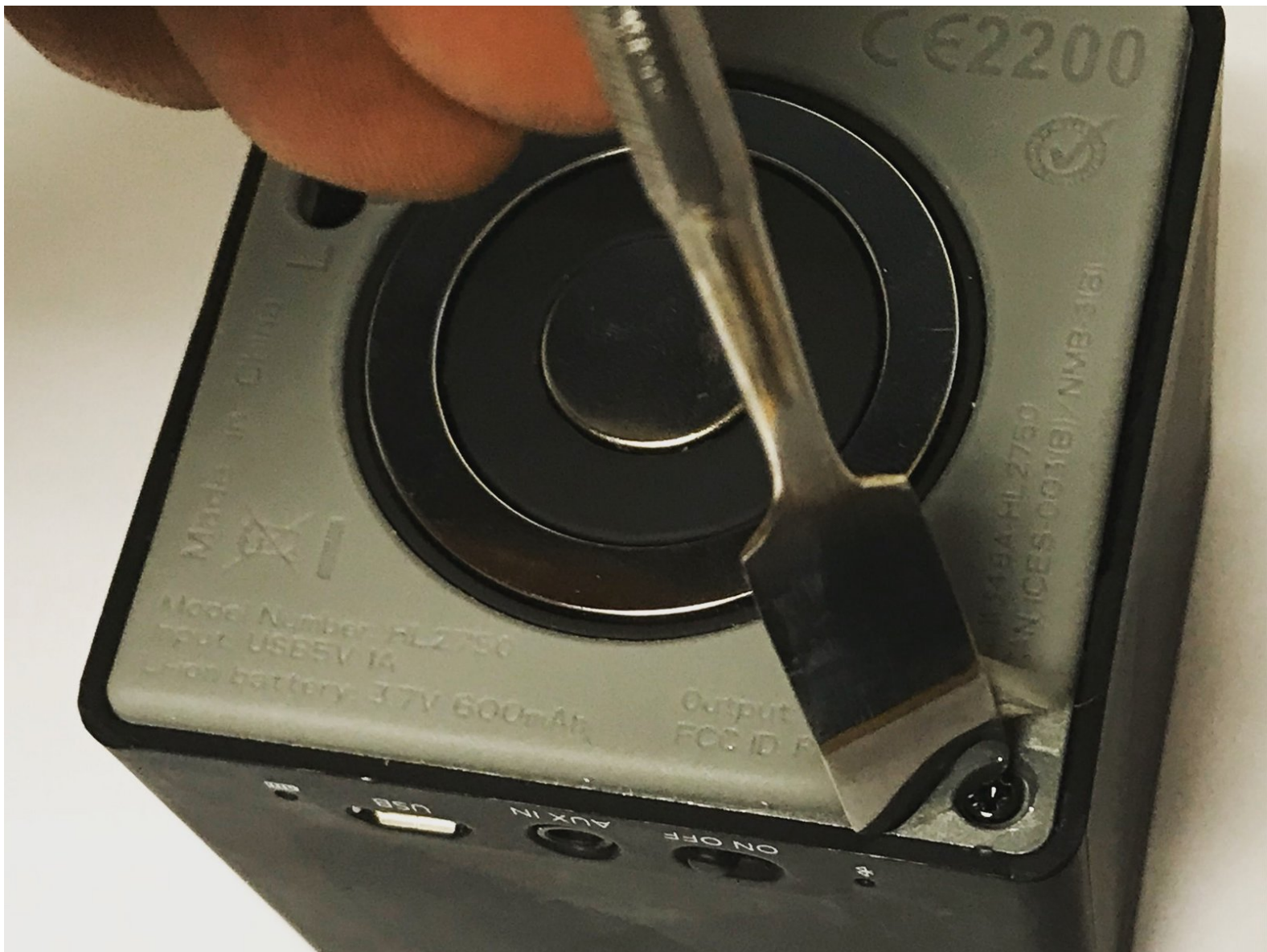




# BEM Mojo 2 Speaker Battery Replacement

Batteries can die and run out of power overtime. This guide will show you how to replace the speaker's battery.

Written By: Rachel Iacoboni



## INTRODUCTION

Common issues that involve the speaker battery is when your device will not power on, even when plugged into the Micro USB charger and to an AC adapter that is plugged into the wall. It is important to know the difference between replacing the speaker's battery and the charging base's battery. The speaker's battery should be replaced for the reason listed above while the charging base battery should only be replaced if the speaker does not hold a charge while unplugged.



### TOOLS:

- [Metal Spudger](#) (1)
  - [Tweezers](#) (1)
  - [iFixit Opening Tools](#) (1)
  - [Phillips #0 Screwdriver](#) (1)
-

## Step 1 — Speaker Battery



- Pull back the rubber corners to uncover the bottom screws.
- Continue this process for all four 10 mm screws.

## Step 2



- Use the J0 screwdriver to remove all four 10mm screws from the bottom of the speaker.
- ⚠ **Caution:** It is important when using the screwdriver to not use excessive force as this may strip the screw and can damage the speaker itself.

## Step 3



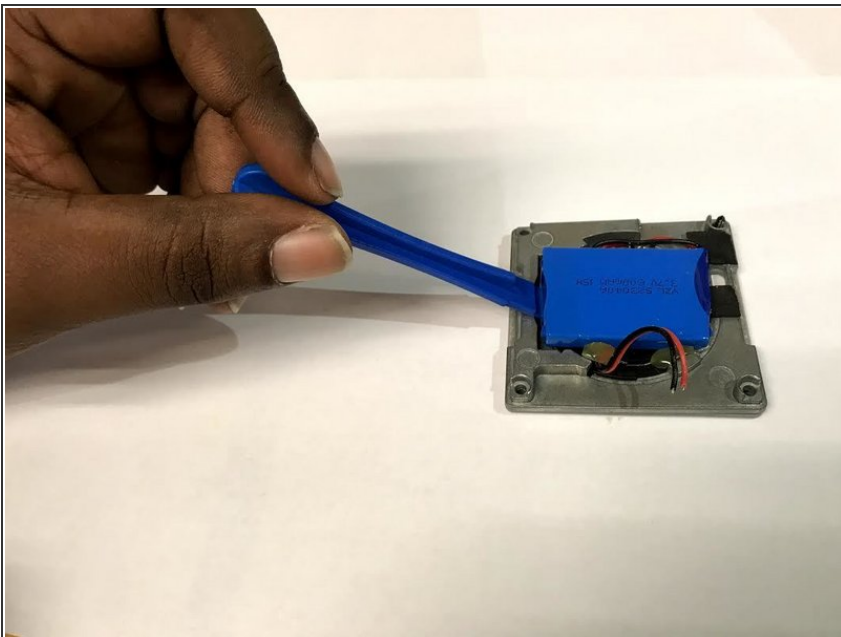
- Remove the bottom cover of the speaker.

**⚠ Caution:** Be careful when removing the bottom cover of the speaker as there are wires that connect to the speaker itself that become exposed upon base removal.

- Remove all of the wires from the speaker's internal chip, utilizing the tweezers.

**⚠ Caution:** Be careful not to damage the chip.

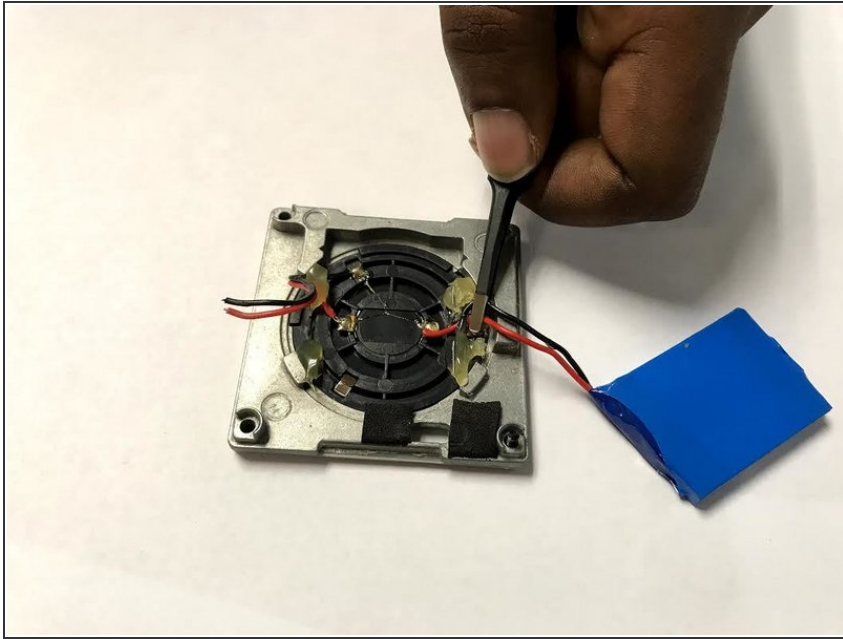
## Step 4



- Remove the speaker's battery from its metal base, utilizing the plastic opening tool.



## Step 5



- Remove the wires from the speakers battery using the tweezers or by gently removing them by lightly pinching.

To reassemble your device, follow these instructions in reverse order.