



Vizio CT15 Keyboard Replacement

This guide will assist in the replacement of the Vizio CT15 keyboard.

Written By: jalon



INTRODUCTION

This guide will help users replace their Vizio CT15 keyboard when the whole keyboard is not responding.

TOOLS:

- [Spudger](#) (1)
 - [Phillips #0 Screwdriver](#) (1)
 - [Metal Spudger](#) (1)
-

Step 1 — Vizio CT15 Back Panel Removal



- Turn the laptop off and remove all power cables.
- Remove the six Phillips #0 screws.
- Pull the back cover off.

Step 2 — Battery



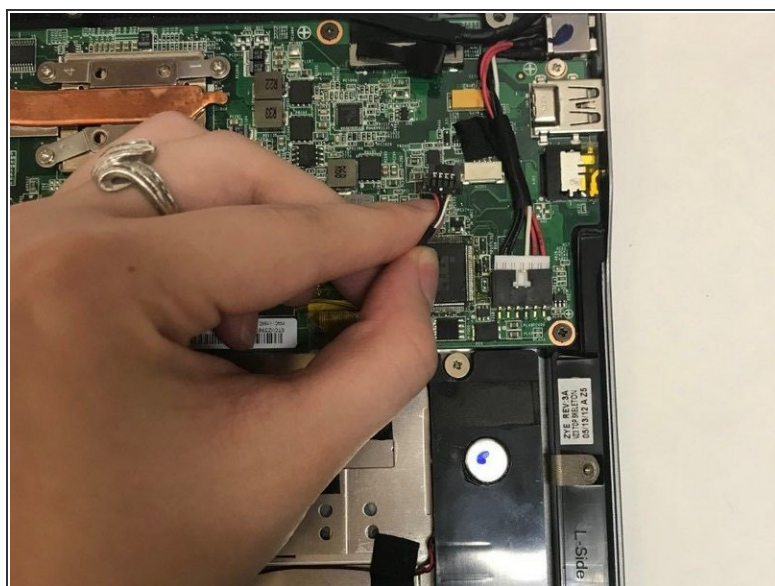
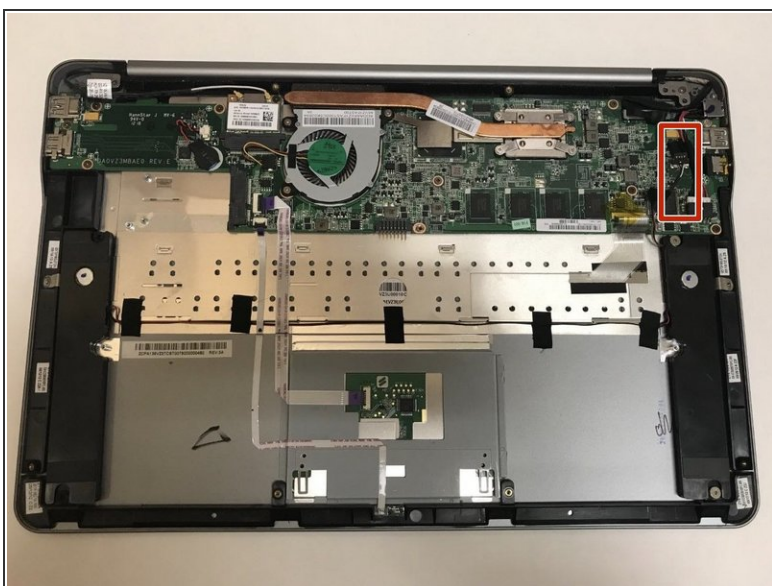
- Remove the six Phillips #0 screws.

Step 3



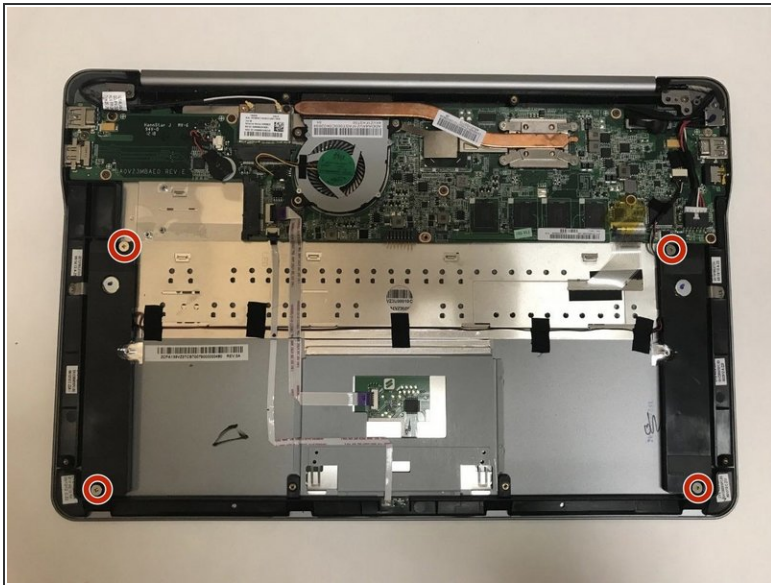
- Use the plastic opening tool or your fingers to pry the battery up and pull it from the laptop.

Step 4 — Speakers



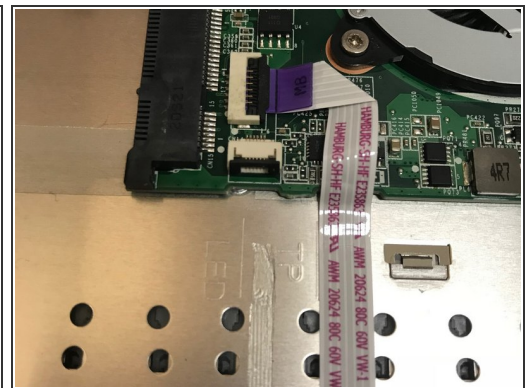
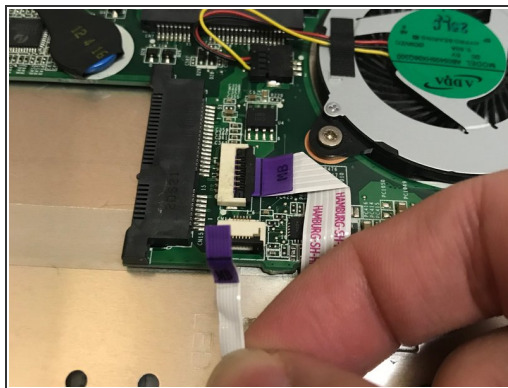
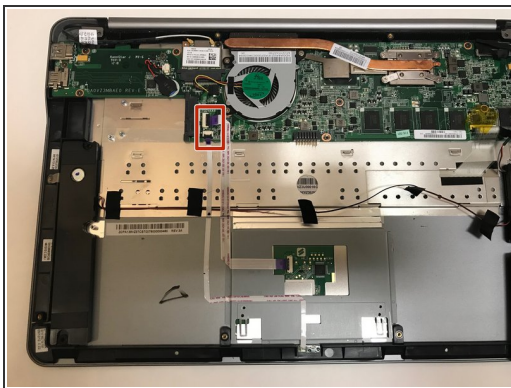
- Unplug the wire connecting the speakers to the motherboard.

Step 5



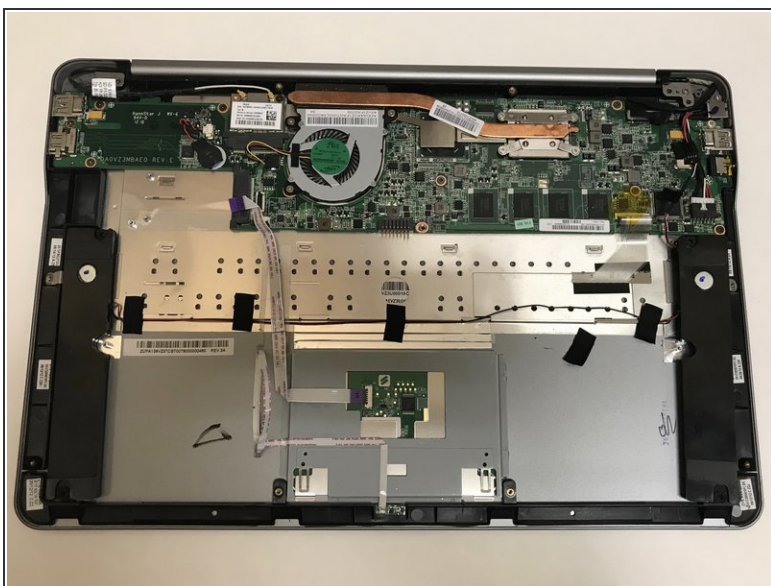
- Remove the four Phillips #0 screws.
- Pull the speakers out to remove.

Step 6



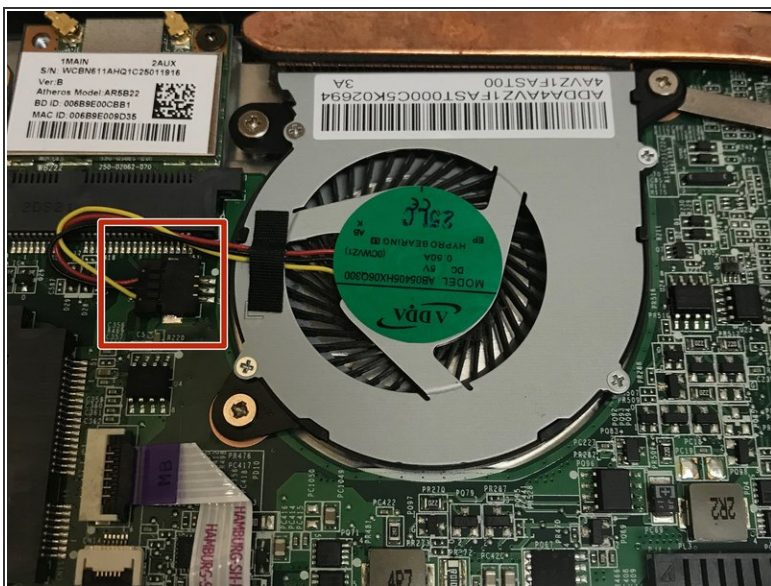
- Use the flat end of a spudger to lift up the black tab on the ZIF connector.
 - Pull the ribbon cables out of the ZIF connector.
- i** These wires are not connected to the speakers. We are only unplugging them to remove the wire underneath.

Step 7



- Pull off the black strips of tape from the speaker wires and remove the speakers from the laptop.

Step 8 — CPU Fan



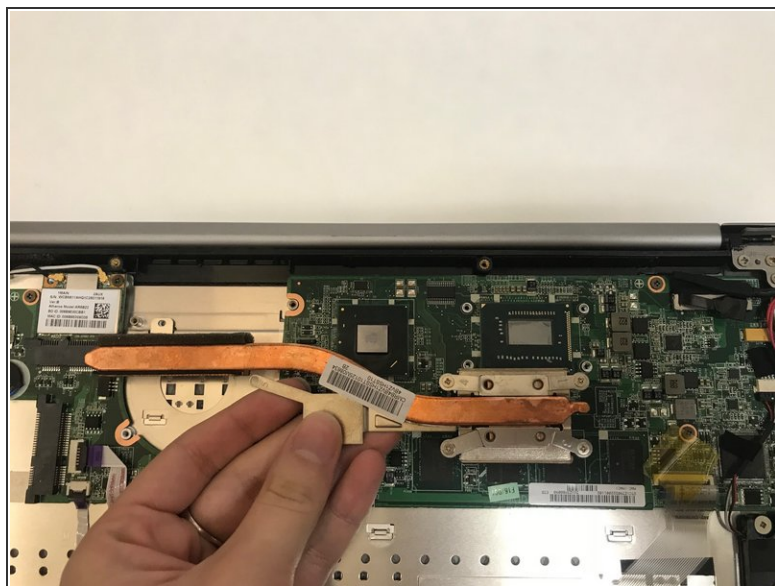
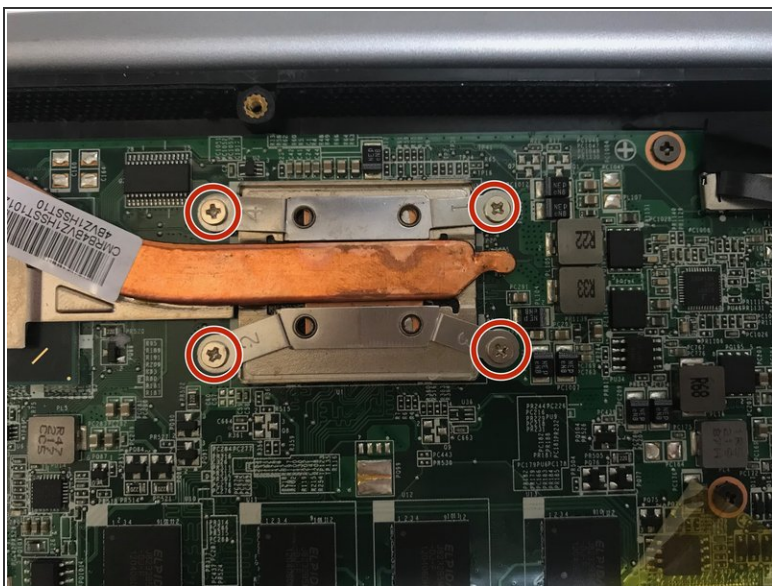
- Unplug the fan from the motherboard.

Step 9



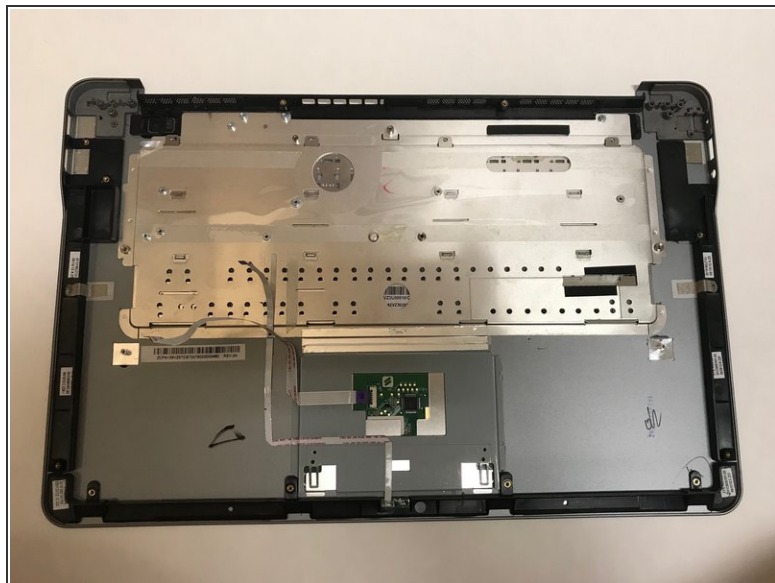
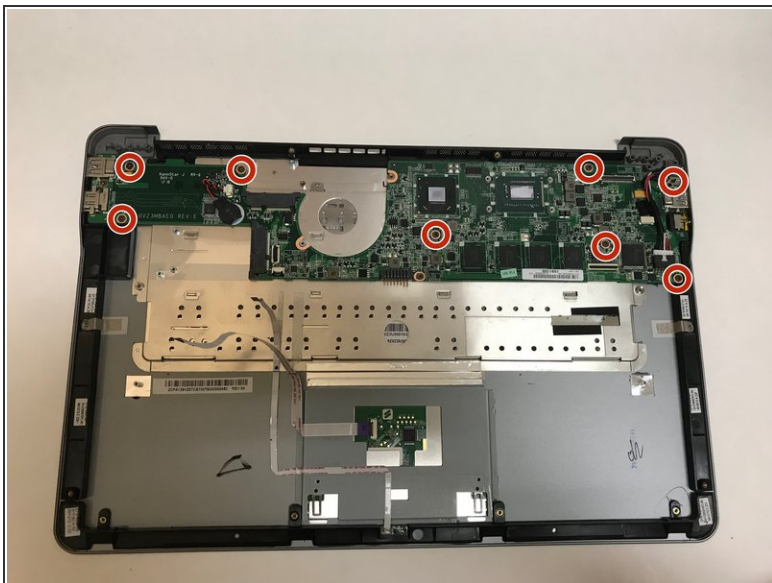
- Remove the three Phillips #0 screws.
- Pull the fan out to remove.

Step 10 — Keyboard



- Remove the four Philips #0 screws from the heatsink.
- Pull up and out to remove the heatsink from the laptop.

Step 11



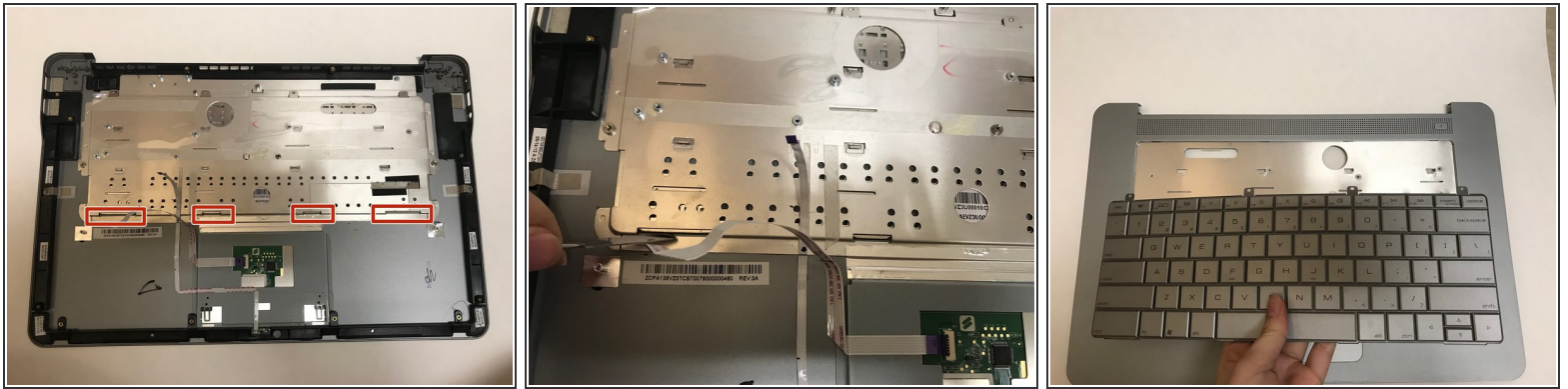
- Remove the eight Phillips #0 screws from the motherboard.
- Lift the motherboard up and out to remove it from the laptop.

Step 12



- Remove the four Phillips #00 screws that hold the keyboard to the laptop case.

Step 13



- Use a metal spudger to carefully push the keyboard out of place.
- Carefully flip the laptop over and pull the keyboard out.

To reassemble your device, follow these instructions in reverse order.