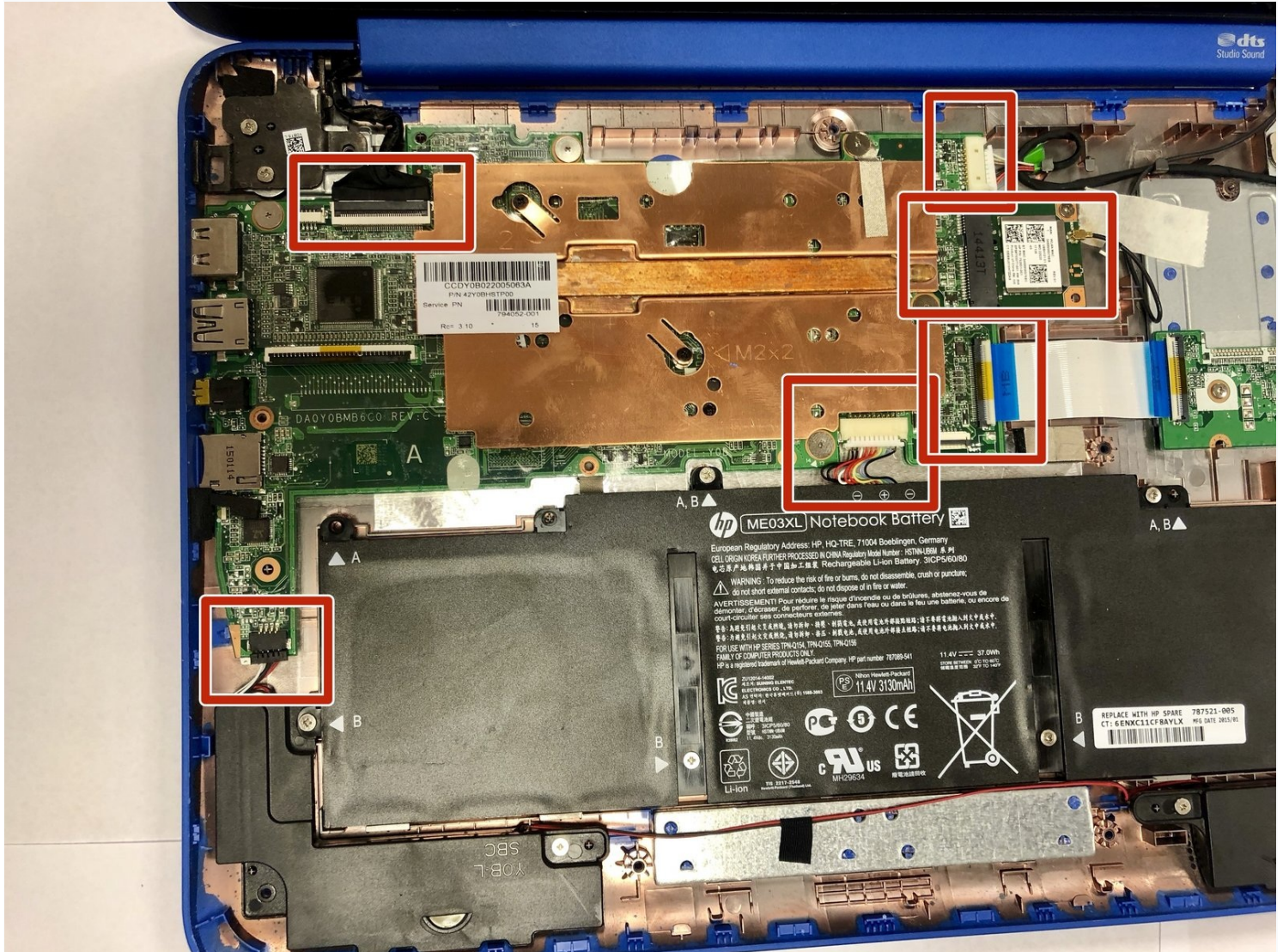




HP Stream 13-c002dx Motherboard Replacement

Use this guide to replace the motherboard in...

Written By: Matthew Dodge



INTRODUCTION

Use this guide to replace the motherboard in your HP Stream 13-C002DX. You may need to replace the motherboard in your HP Stream if it is having operating issues or is unable to function. The tools required are listed below, but before beginning make sure the device is completely powered off and disconnected from any external power sources.



TOOLS:

[Spudger](#) (1)
[Phillips #0 Screwdriver](#) (1)
[6-in-1 Screwdriver](#) (1)
[iFixit Opening Tool](#) (1)



PARTS:

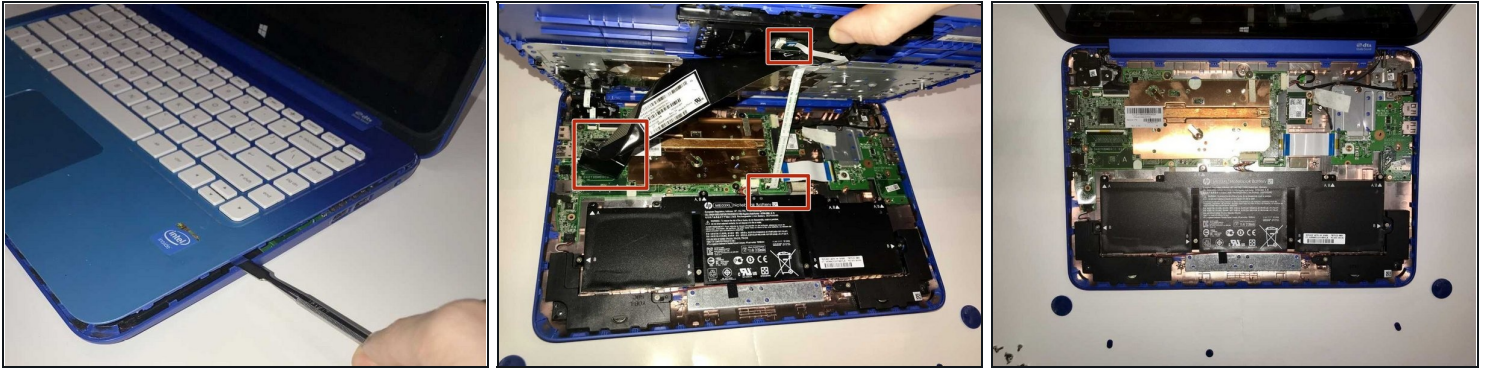
[HP ME03XL Laptop Battery](#) (1)
[HP Stream 13-c002dx Wifi Chip](#) (1)
[HP stream 13-c002dx Motherboard](#) (1)

Step 1 — Keyboard



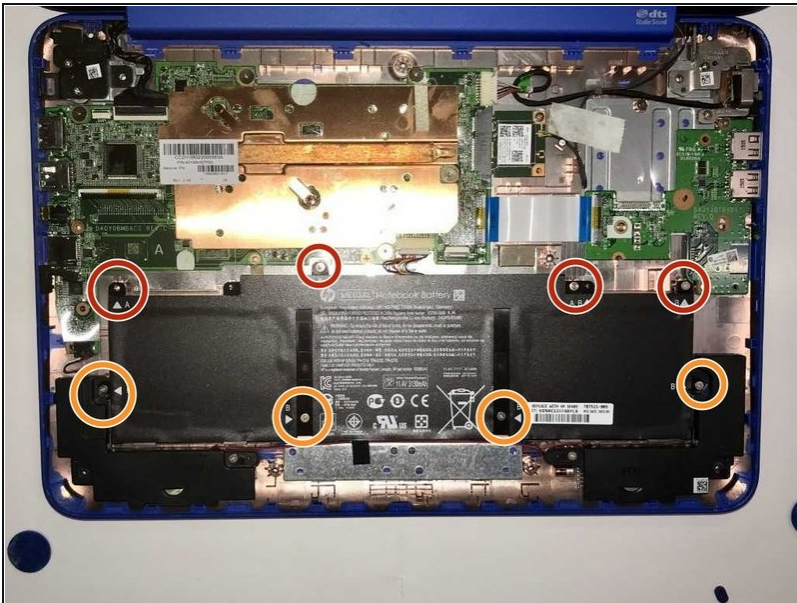
- ① Begin by placing your laptop on a clean surface such as a table and away from any liquids which may spill and damage components.
- Flip the laptop over so the bottom is facing up.
- Use your Phillips #0 screwdriver to remove the eleven visible 5 mm screws on the back of the laptop.
- ① There are some screws underneath the rubber feet. Use a spudger to remove them and gain access.
- Unscrew the two remaining 2.5mm screws. Keep these screws separate from the first eleven 5mm screws.

Step 2



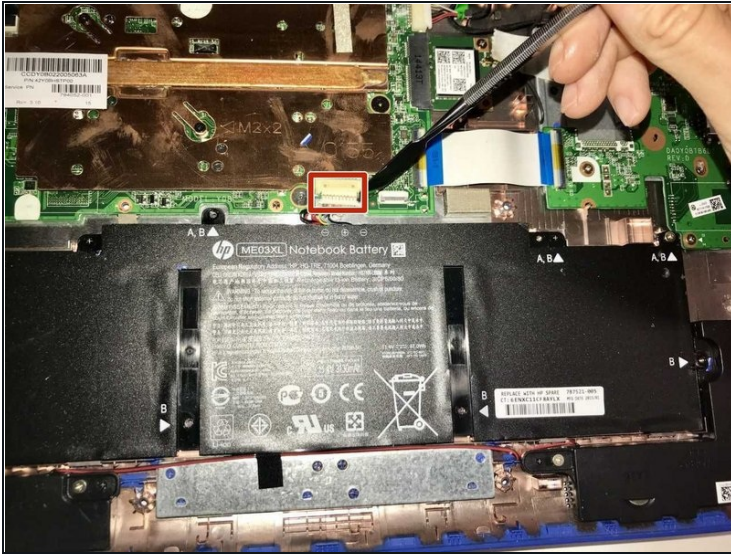
- ① Flip the laptop back over so it's right side up and open the screen.
- Using a spudger, separate the keyboard surface from the bottom of the laptop.
- While lifting the keyboard surface from the bottom, you will notice three cables still attaching them together. Gently unplug each of these cables from the motherboard.
- Remove the keyboard assembly.

Step 3 — Battery



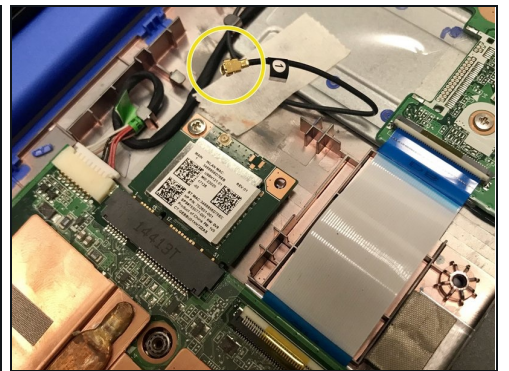
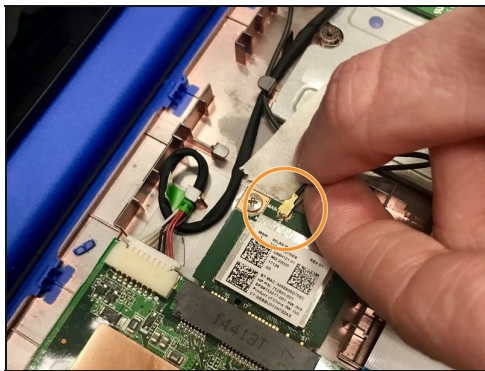
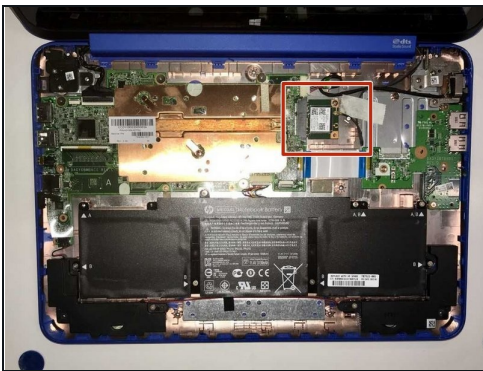
- Use the Phillips #0 to remove four screws from the top of the battery labeled A.
- Use the Phillips #0 screwdriver to remove four screws labeled holding the battery to the case.

Step 4



- Coming from the upper middle of the battery, there are cables which connect the battery to the motherboard. Gently remove this group of cables from the socket that it is in on the motherboard.
- Lift the battery out.

Step 5 — Wireless Card



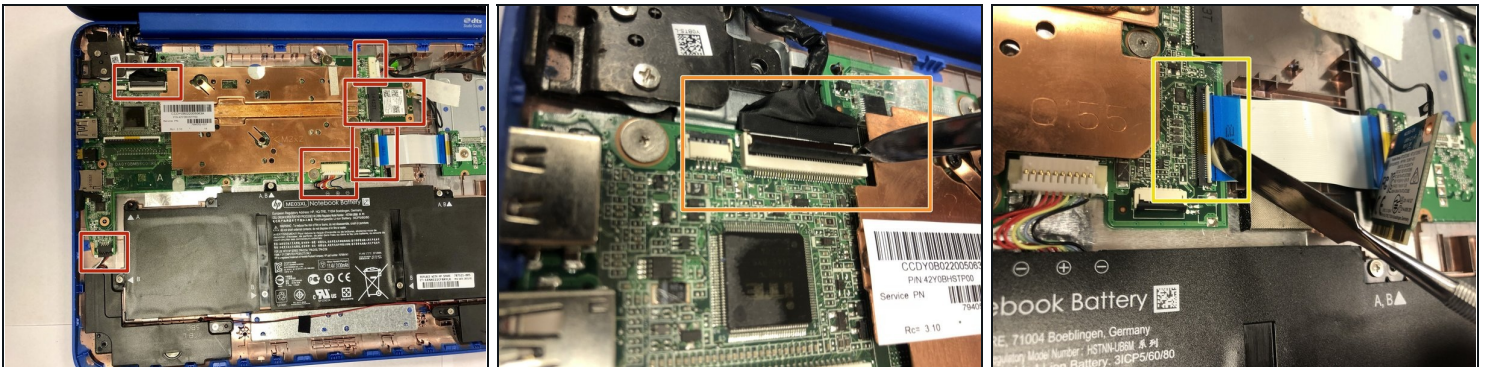
- Inside the laptop you will notice the wireless card located in the upper middle. This will be what you are replacing.
- Attached to the Wi-Fi card is a black wire that must be removed. Using your hand, lift gently on the wire as close as you can to where it connects to the Wi-Fi card.
- Once the wire is removed, set it aside so it does not get damaged.

Step 6



- Remove the screw holding the wireless card in place.
- With the screw removed, gently pull back the Wi-Fi card and then lift it out of the laptop. You are now ready to insert the new wireless card.

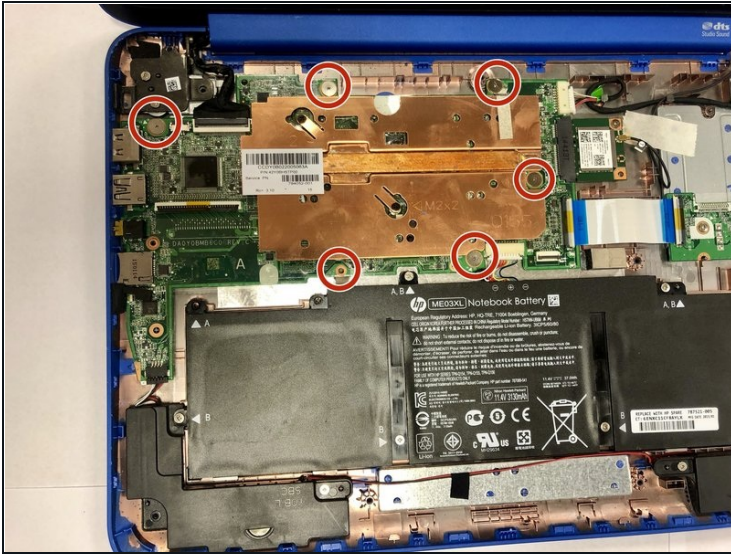
Step 7 — Motherboard



- Once you have access to the internals, remove the wires and wifi card connected to the motherboard.
- To remove the upper wire connection, flip the tab holding the cable onto the motherboard, then remove it gently.
- To remove the wire strand connection, flip the tab shown and then remove the wire strand.

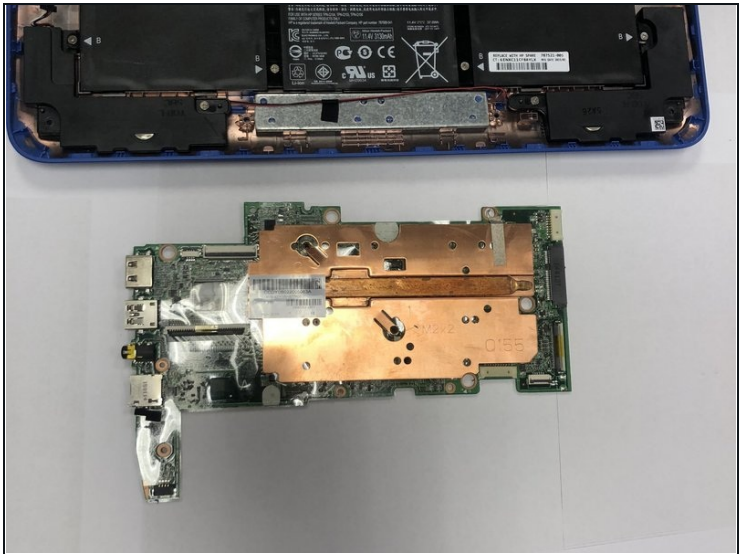
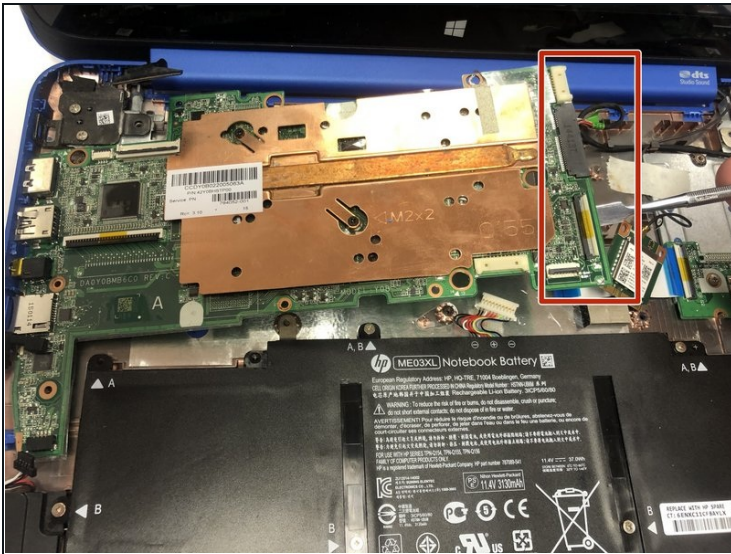
⚠ Do you not use a metal spudger as shown in the photo. A nylon spudger is the appropriate tool for the job and will not damage the motherboard as a metal spudger might do.

Step 8



- Using a Phillips #0 screwdriver, remove the six screws holding the motherboard down.

Step 9



- Now, gently pry up on the right side of the motherboard with the spudger and then lift the motherboard out.

To reassemble your device, follow these instructions in reverse order.