



DBPOWER RD-810 Imager Replacement

Imager replacement in the RD-810 Projector.

Written By: John Russell



INTRODUCTION

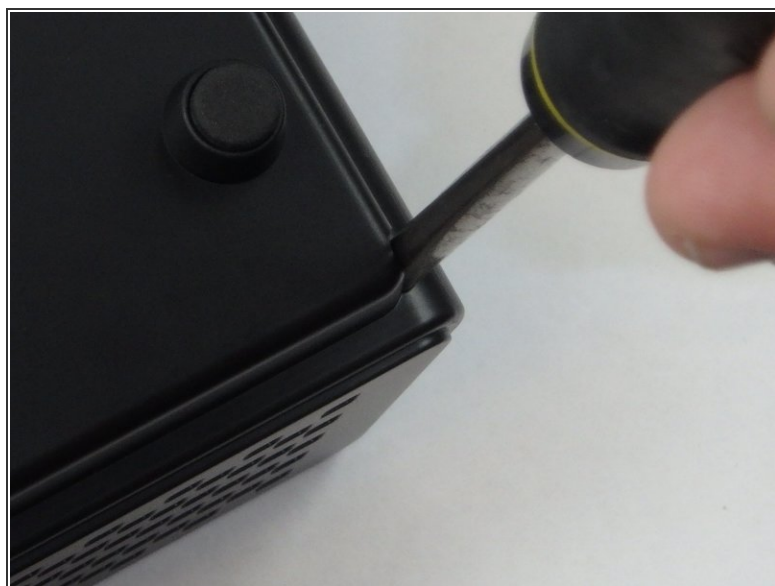
The imager creates the picture that the projector displays. Because any dust or dirt stuck to the imager could cause distortions, it is important to keep the imager clean. If the image is not being displayed or is blurry or distorted, the imager may need to be cleaned or replaced.



TOOLS:

- [Phillips #2 Screwdriver](#) (1)
 - [Phillips #3 Screwdriver](#) (1)
-

Step 1 — Top Cover



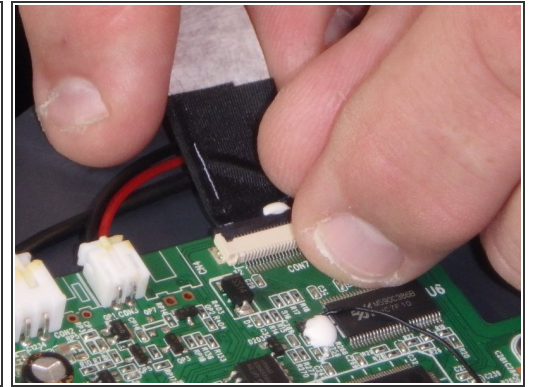
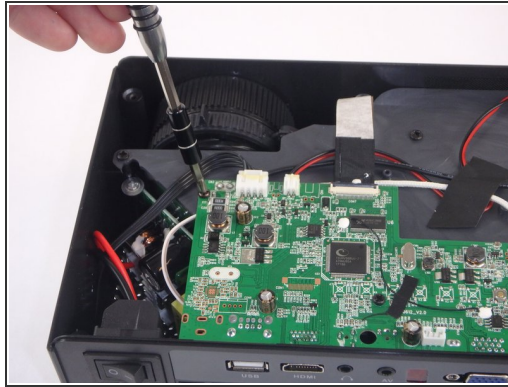
- ❗ Make sure the projector is unplugged before starting
- Place the projector upside down to access the screws on the bottom.
- Remove the five 7mm long screws using a #3 Phillips screwdriver at least 2 inches long.

Step 2



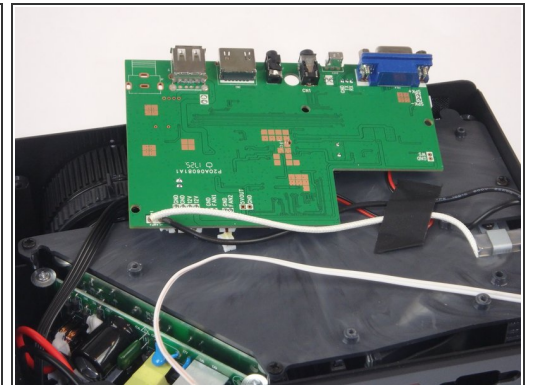
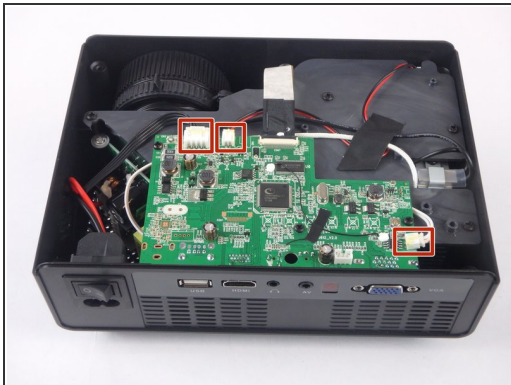
- Flip the projector over and then remove the cover by lifting it up.

Step 3 — Motherboard and LED Bulb



- Remove the three 6mm PH2 phillips head screws.
- Disconnect the ribbon cable by flipping up the latch on the connector and then pull the ribbon out.

Step 4



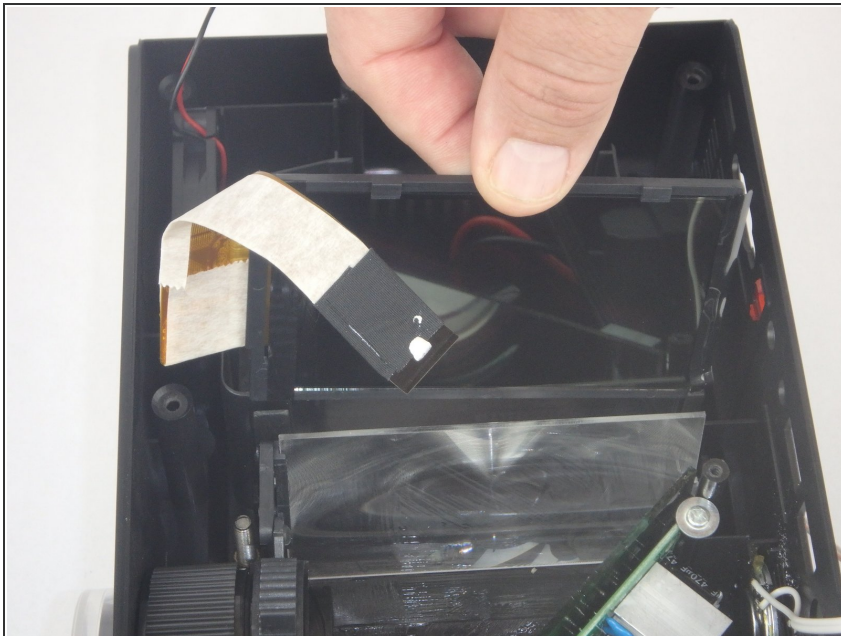
- Disconnect the three wire connectors. Grasp both sides of the connector and pull apart.
- ⓘ Keep the connector parallel to the mother board to avoid breaking the solder connection.
- Lift the motherboard up and place it out of the way.

Step 5



- Remove the five 7mm PH2 phillips head screws on the black plate and lift the plate out.
- Lift the aluminum heat sink up to remove it from the projector.
- ⓘ The motherboard is already removed in this step.

Step 6 — Imager



- Lift the imager straight up to remove it from the projector.

To reassemble your device, follow these instructions in reverse order.