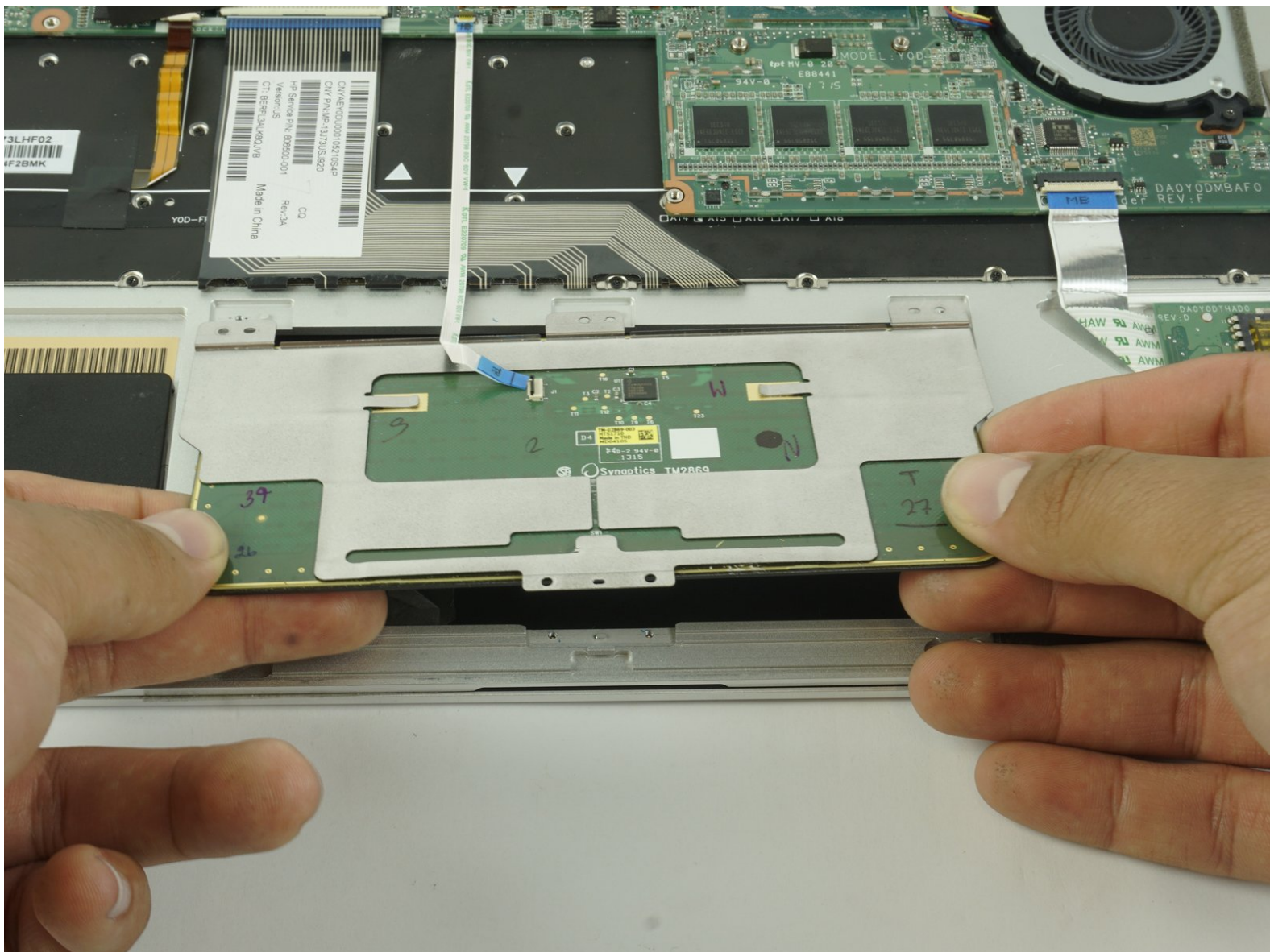




HP Spectre 13 4003dx x360 Touchpad Replacement

This guide will show you how to effectively and safely remove and replace your old and non-functional touchpad with a new one.

Written By: Ethan Plumer



INTRODUCTION

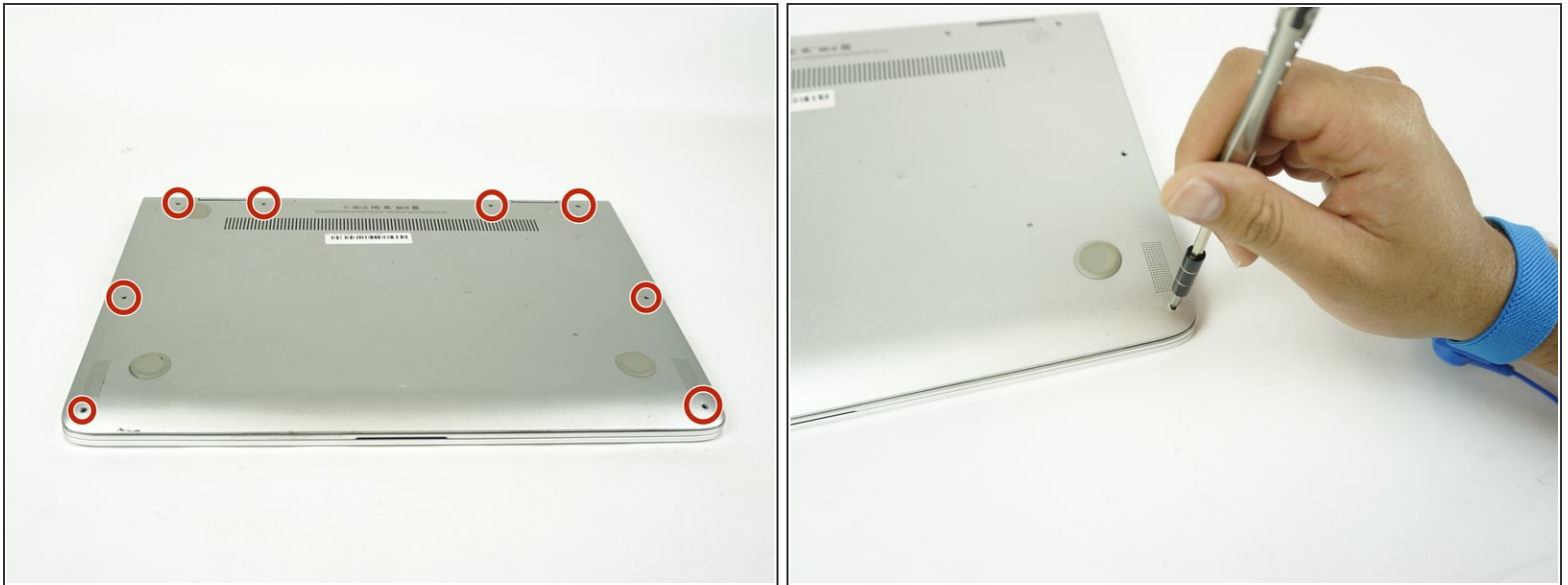
This guide will give you step-by-step instructions on how to remove your touchpad. Make sure you have a clean, dry, uncluttered, and roomy work space that has good lighting before you start. Also, make sure that your touchpad actually needs to be replaced by consulting our [troubleshooting guide](#).



TOOLS:

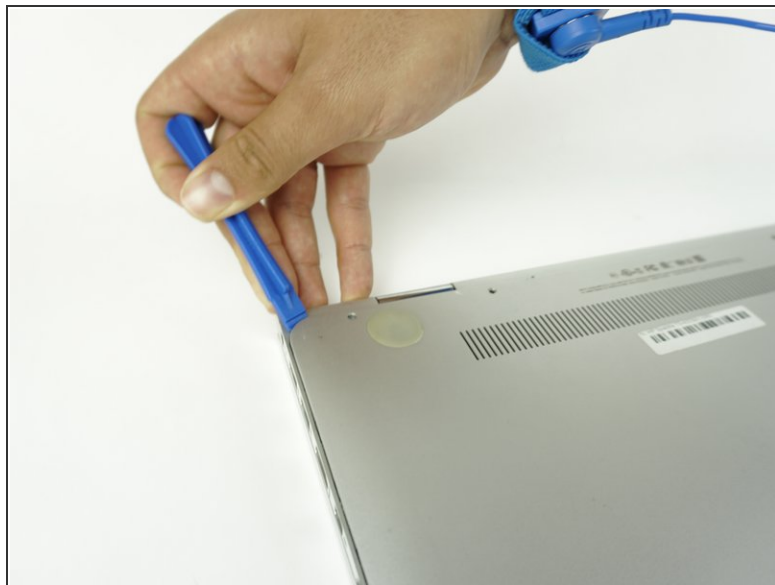
- [Phillips #00 Screwdriver](#) (1)
 - [Magnetic Project Mat](#) (1)
 - [iFixit Opening Tool](#) (1)
-

Step 1 — Battery



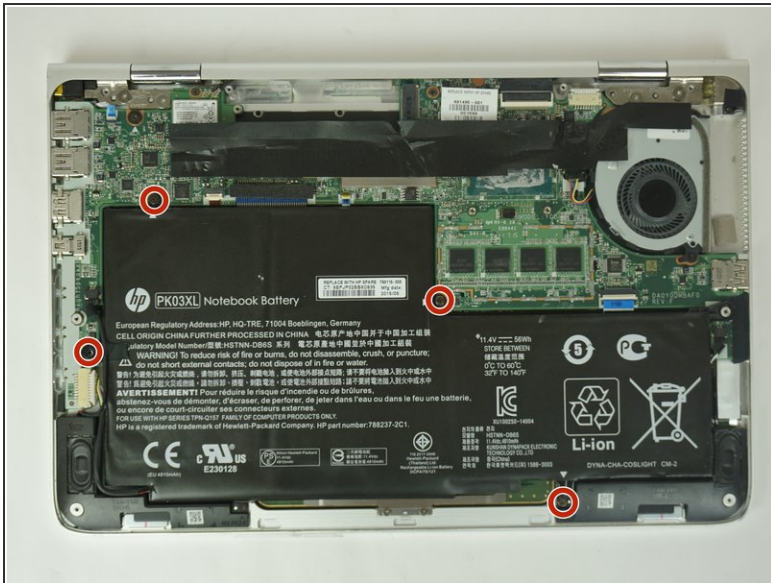
- ⓘ Before you begin, be sure to turn off your laptop and discharge the battery down to 25%.
 - Turn the computer upside down.
 - Use the T5 Torx Screwdriver to remove the eight 3.3 mm screws.
- ⓘ Make sure to use the [magnetic project mat](#) to help you keep track of the small screws.

Step 2



- Use an opening tool to pry up and loosen the back case from the laptop.
 - ⚠ If the back case doesn't loosen easily, there may be screws hidden underneath the rubber feet. Carefully pry a foot up and remove any hidden screws.
- Remove the back case.

Step 3



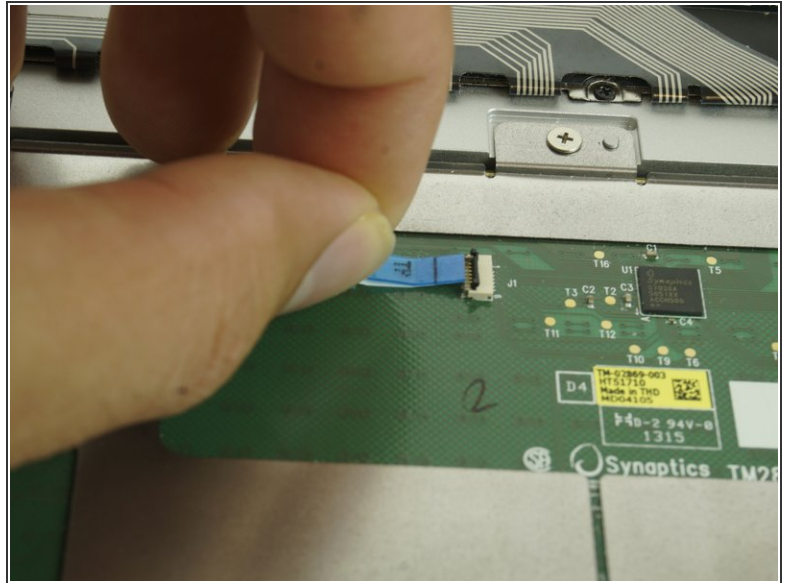
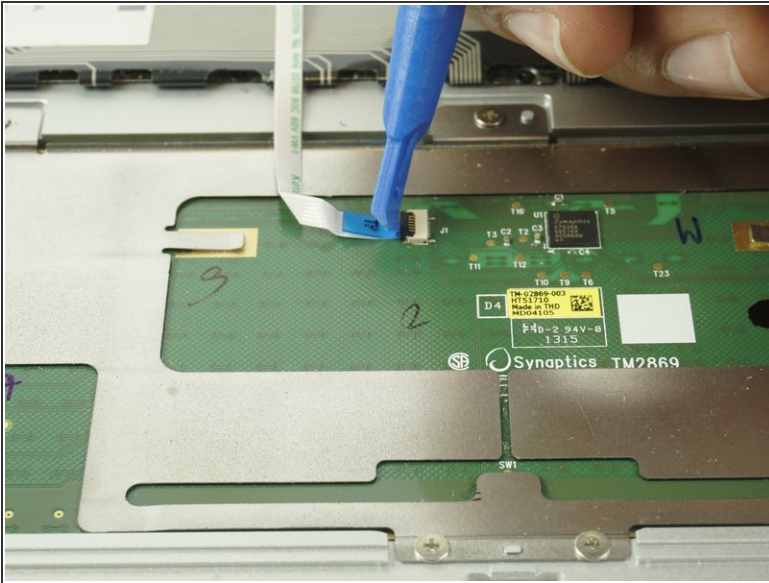
- Remove the four 2mm Phillips #00 screws securing the battery.
- i** The screw locations are marked by small white arrows on the battery.

Step 4



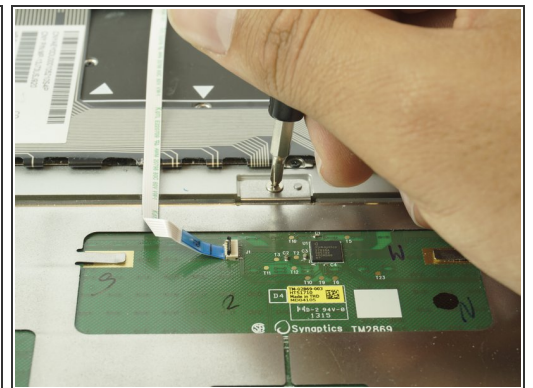
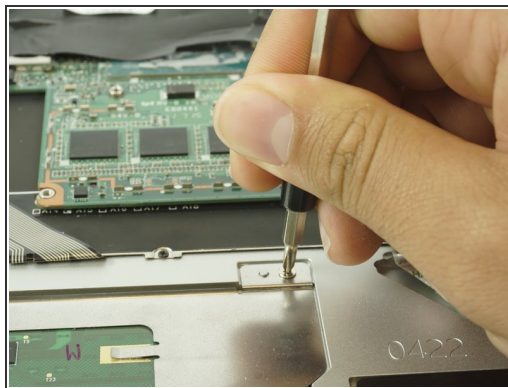
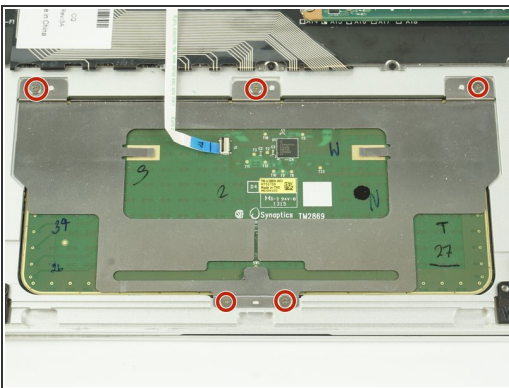
- Peel off the adhesive on the left side of the battery holding the speaker wire down.
- Move the battery slightly to gain access to the battery plug, located on the left edge of the battery.
- Carefully unplug the battery by pulling the connector towards the battery.
⚠ Pull parallel to the battery, not straight up.
- Remove the battery.
i It is normal for your battery to flex and bend a bit where the wider section meets the narrower section.

Step 5 — Touchpad



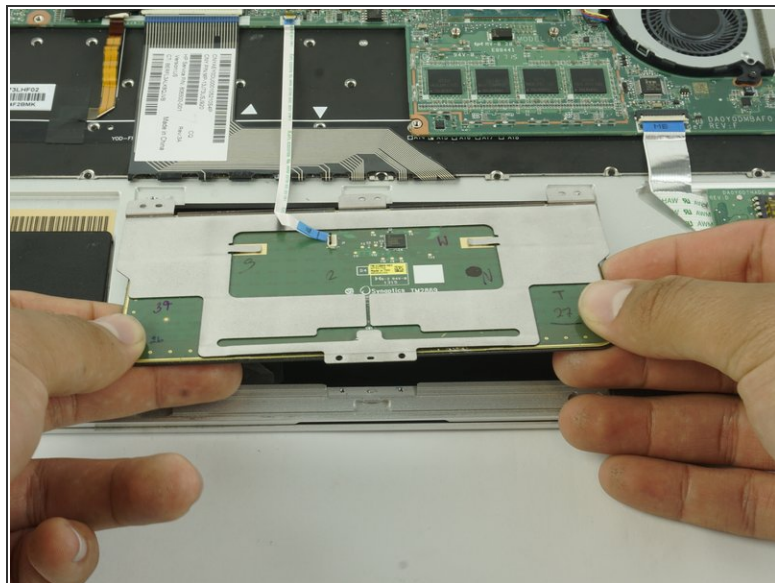
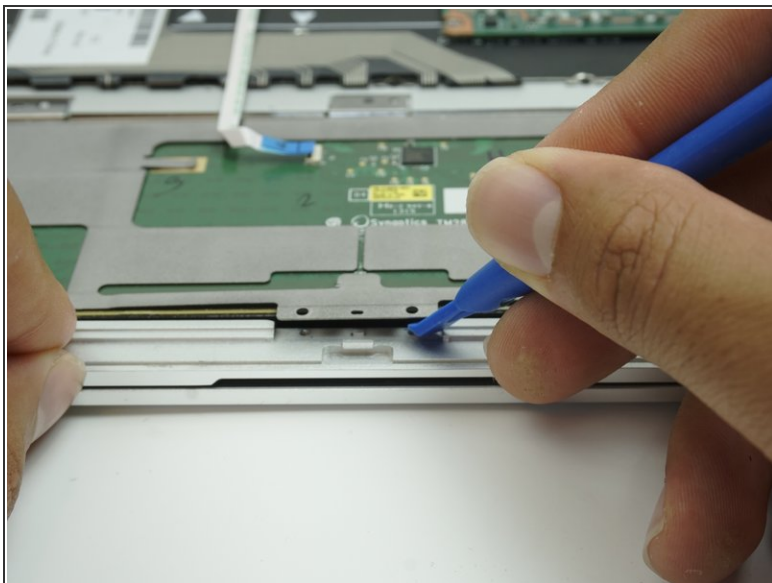
- Using a plastic opening tool, lift the locking bar on the trackpad ZIF connector.
- Gently pull the cable out.

Step 6



- Using the PH00 Screwdriver, remove the five 2.0 mm screws indicated in the picture.

Step 7



- Using a plastic opening tool, carefully lift up on the lower center metal piece of the touchpad.
 - Using both hands, gently lift up on the touchpad until it is completely removed.
- i** If you are uncomfortable using the plastic opening tool, both hands can be used to remove the touchpad.

To reassemble your device, follow these instructions in reverse order.