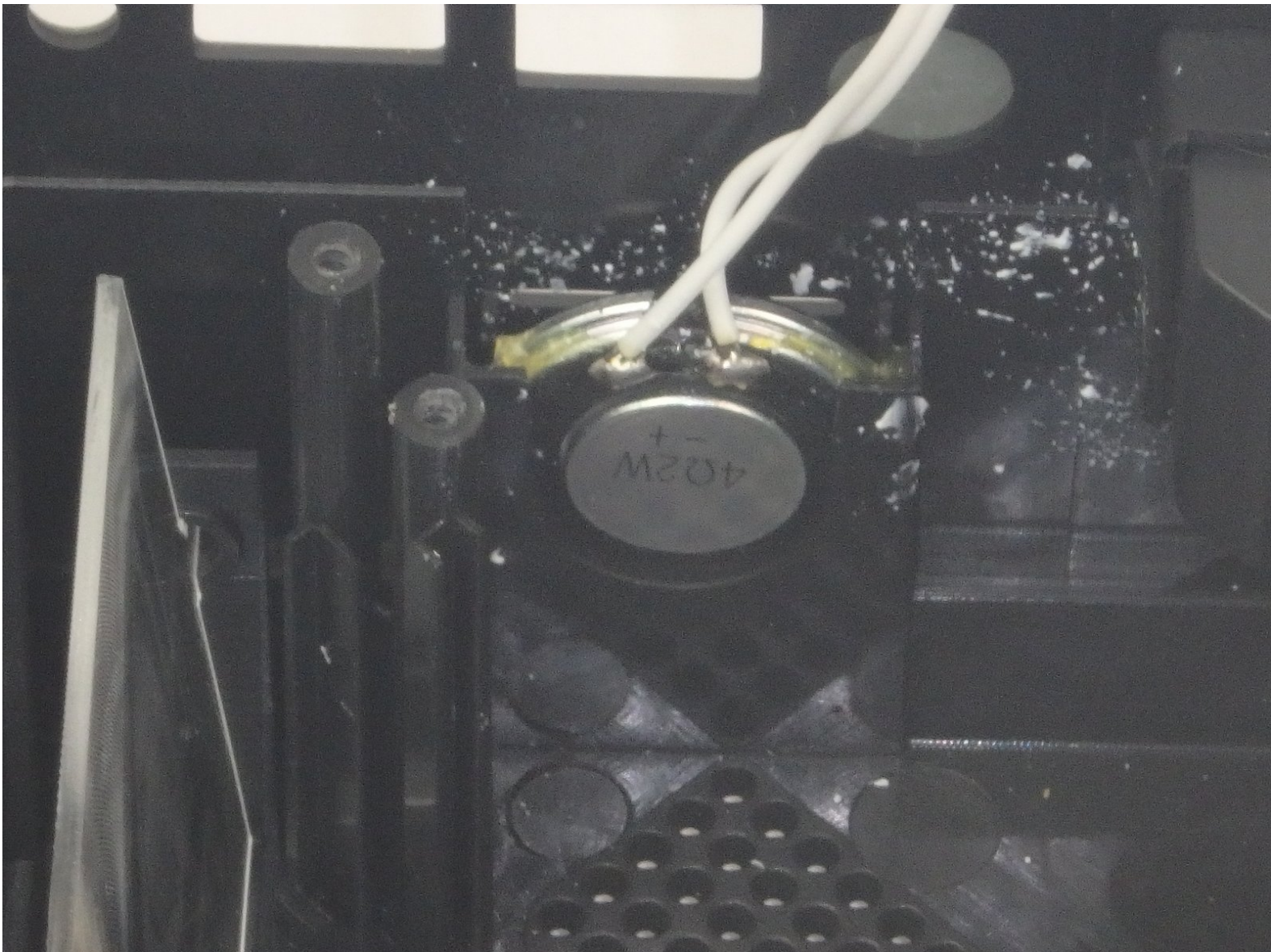




DBPOWER RD-810 Speaker Replacement

Replace the speaker.

Written By: John Russell



INTRODUCTION

The speaker creates the sound heard from the projector. If the sounds are distorted or no sound is heard, the speaker may need to be replaced.

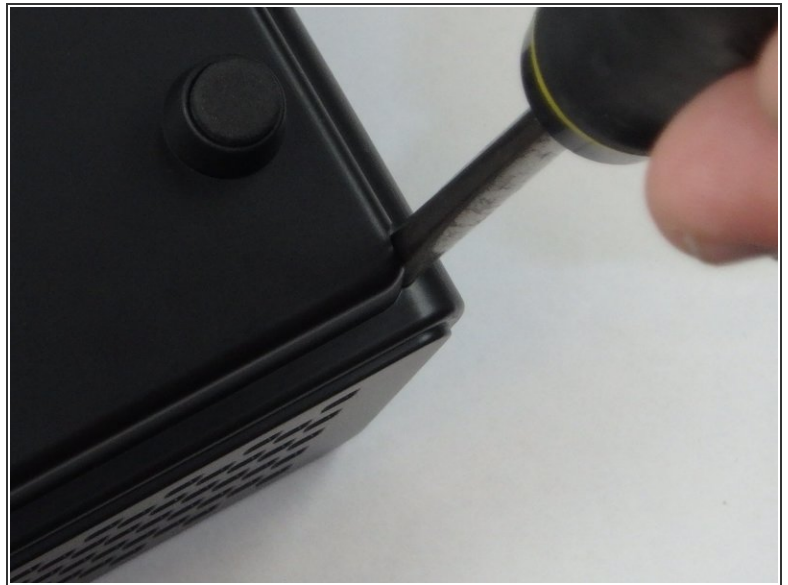
The speaker is glued to the side of the projector. Some force is needed to break the glue bond. Do not pull on the wire when trying to break the speaker free from the glue.



TOOLS:

- [Phillips #2 Screwdriver](#) (1)
 - [Phillips #3 Screwdriver](#) (1)
-

Step 1 — Top Cover



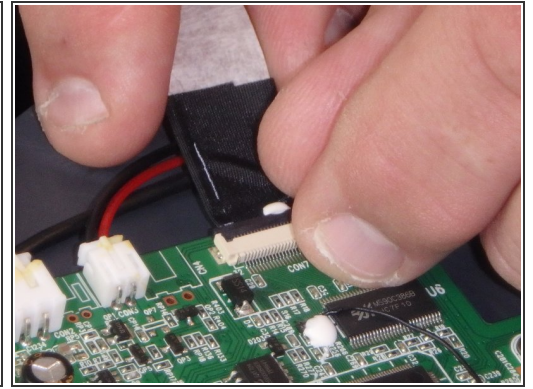
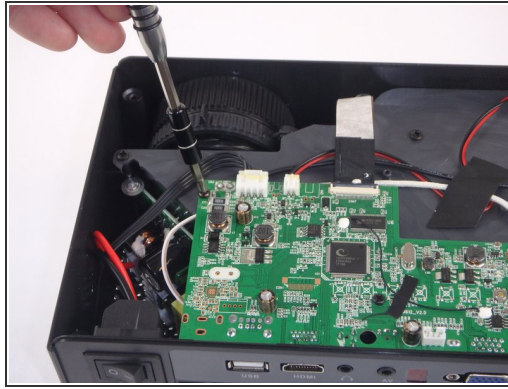
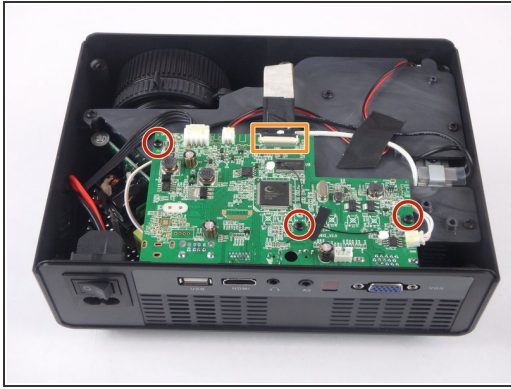
- ❗ Make sure the projector is unplugged before starting
- Place the projector upside down to access the screws on the bottom.
- Remove the five 7mm long screws using a #3 Phillips screwdriver at least 2 inches long.

Step 2



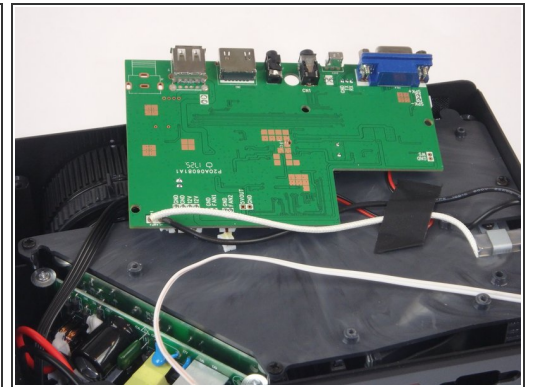
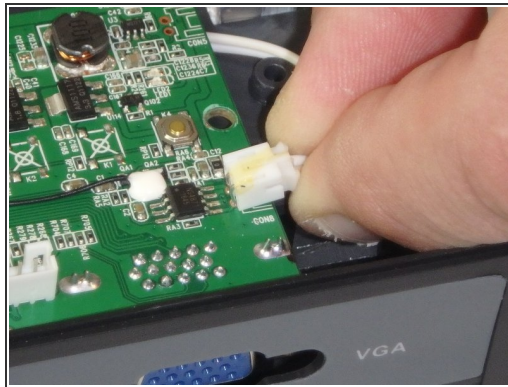
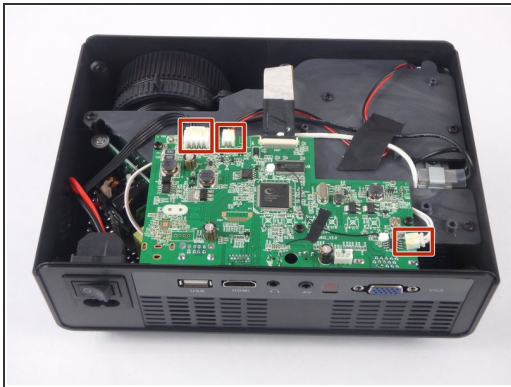
- Flip the projector over and then remove the cover by lifting it up.

Step 3 — Motherboard and LED Bulb



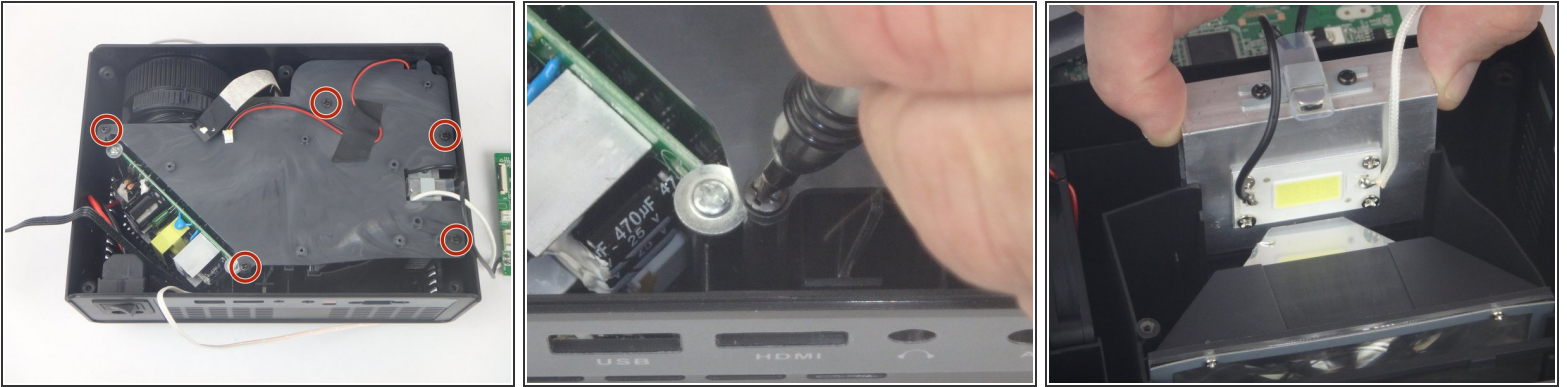
- Remove the three 6mm PH2 phillips head screws.
- Disconnect the ribbon cable by flipping up the latch on the connector and then pull the ribbon out.

Step 4



- Disconnect the three wire connectors. Grasp both sides of the connector and pull apart.
- ⓘ Keep the connector parallel to the mother board to avoid breaking the solder connection.
- Lift the motherboard up and place it out of the way.

Step 5



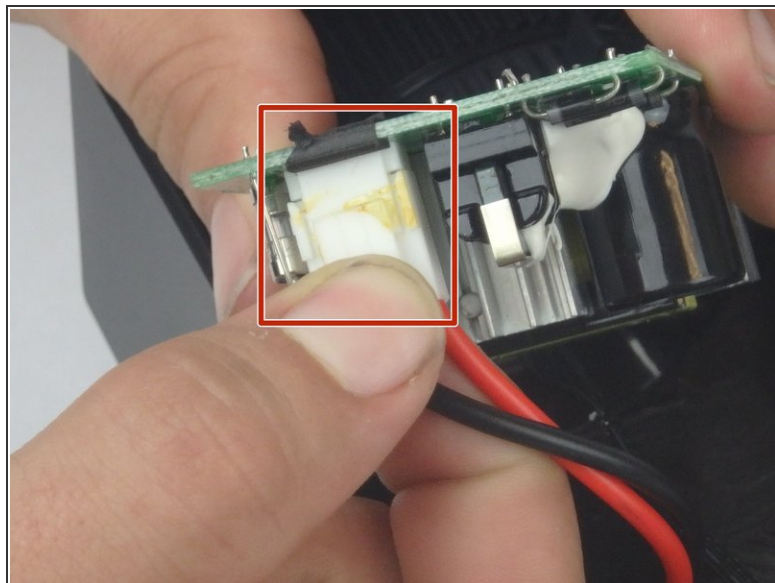
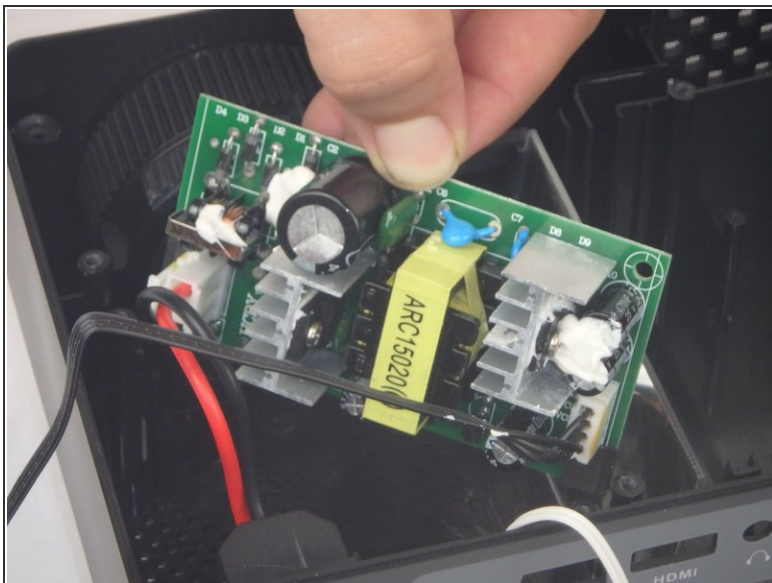
- Remove the five 7mm PH2 phillips head screws on the black plate and lift the plate out.
- Lift the aluminum heat sink up to remove it from the projector.
- ⓘ The motherboard is already removed in this step.

Step 6 — Power Supply Circuit



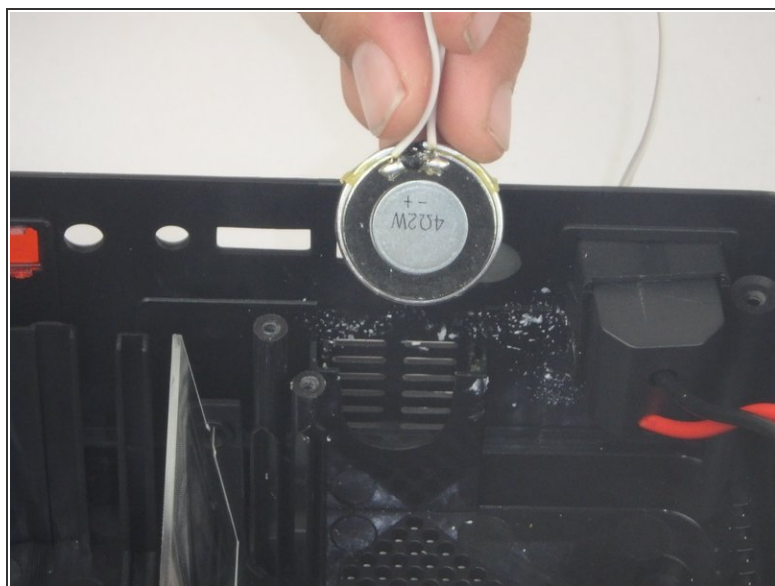
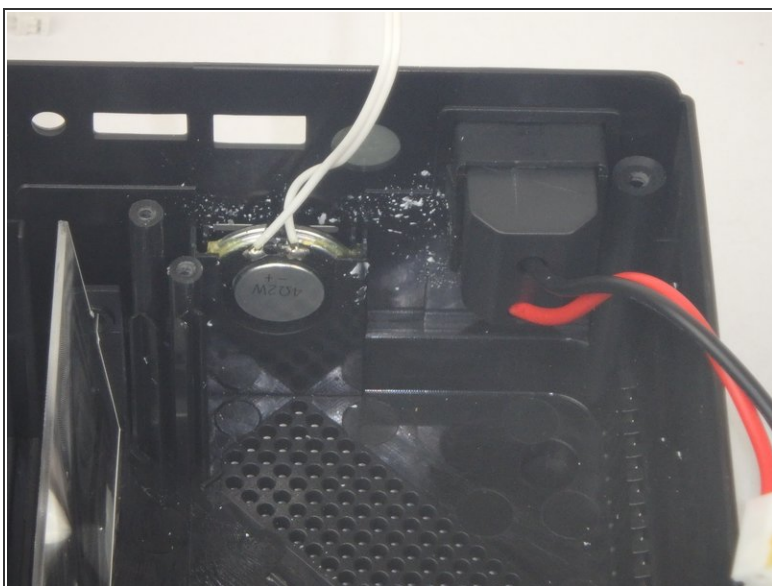
- Remove the two 9mm PH2 phillips head screws.
- Lift the mirror behind the power supply circuit out to gain access to the circuit board.

Step 7



- Lift the power supply circuit board out of the projector.
- Disconnect the cable connector by pulling the two sides of the connector apart.
- ⓘ Keep the connector parallel to the circuit board to avoid breaking the solder connection.

Step 8 — Speaker



- Pull gently on the speaker to break the glue bond, then lift the speaker out of the way.

i Do not pull on the wires while trying to break the glue bond.

To reassemble your device, follow these instructions in reverse order.