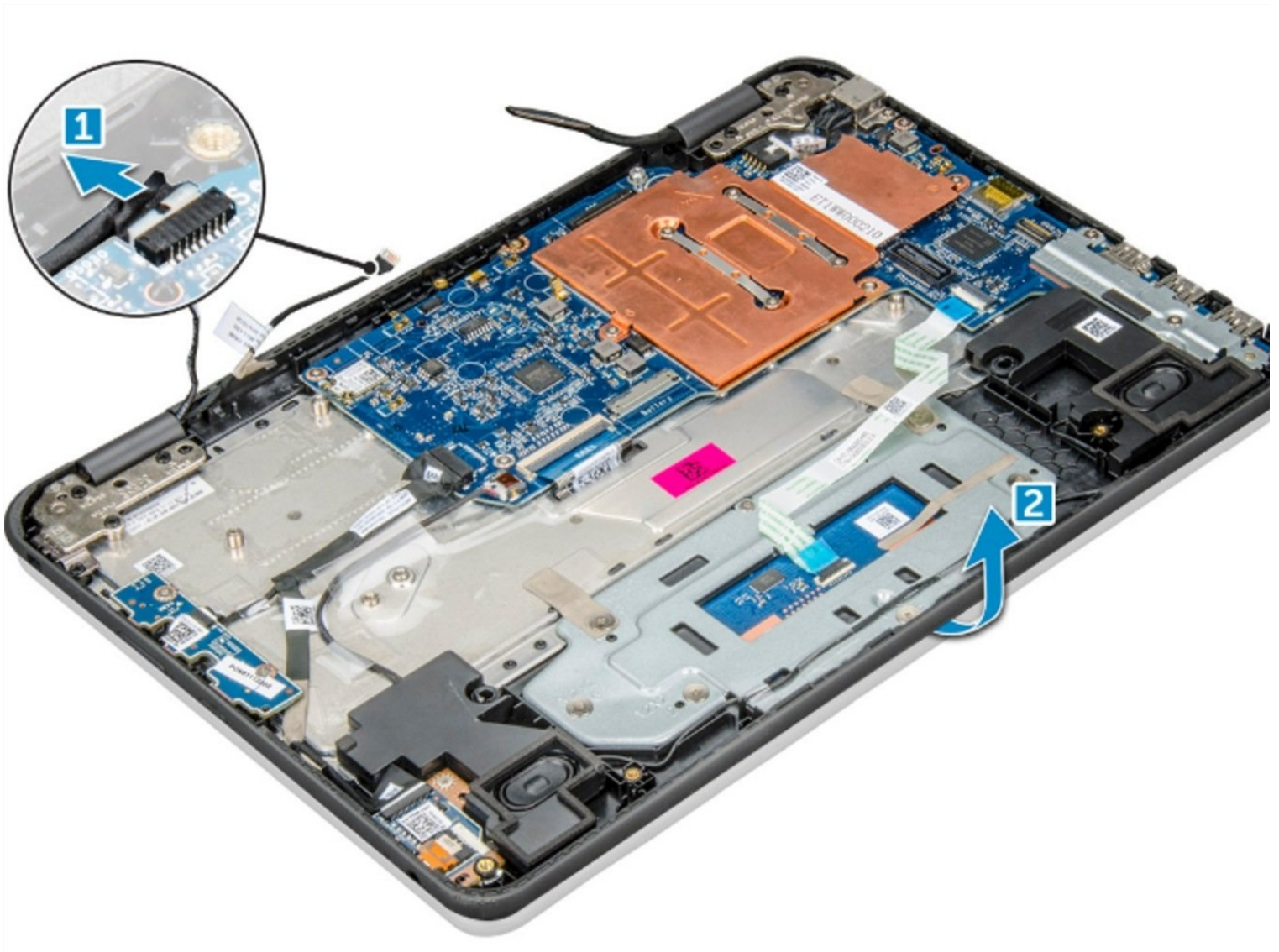




Dell Chromebook 11 3189 Display Assembly Replacement

In this guide, we will show you how to remove...

Written By: Terrence15



INTRODUCTION

In this guide, we will show you how to remove and replace the Display Assembly.

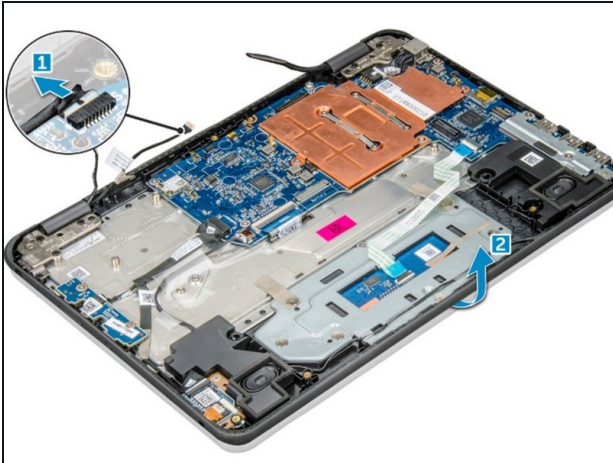
TOOLS:


0 Phillips Screwdriver (1)

PARTS:

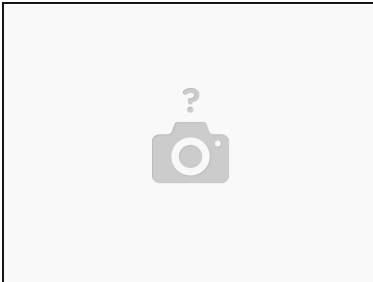
Dell Chromebook Y0GK3 Display Assembly (1)

Step 1 — Replace the Display Hinge



-  Follow the procedure in [Before Working Inside Your Computer](#).
- Remove the display hinge screws M2.0xM5.0 that secure the display assembly to the computer.

Step 2 — Lifting the Display Assembly



- Lift the display assembly away from the computer.

Step 3 — Place the Display Assembly



- Place the display assembly to align with the screw holders on the computer.

Step 4 — Replace the Screws



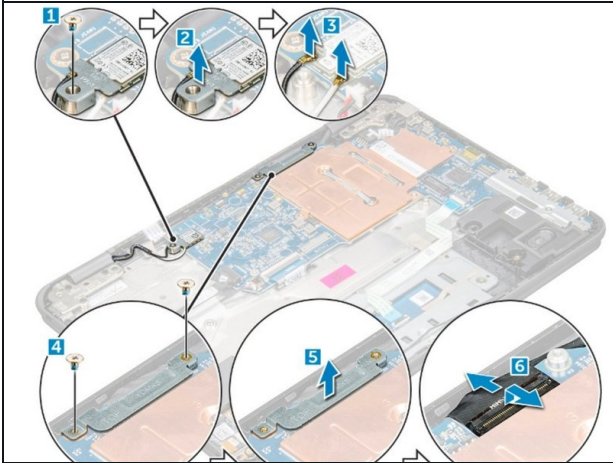
- Replace the screws that secure the display hinges to the palm-rest assembly.

Step 5 — Connecting the Sensor Cable



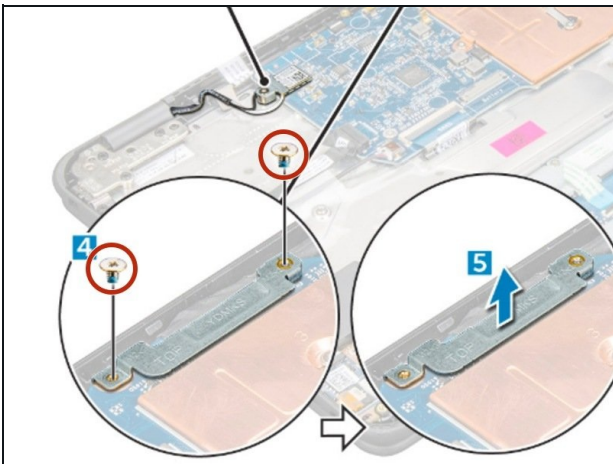
- Flip over the computer and connect the sensor cable on the system board.

Step 6 — Connecting the Display Cable



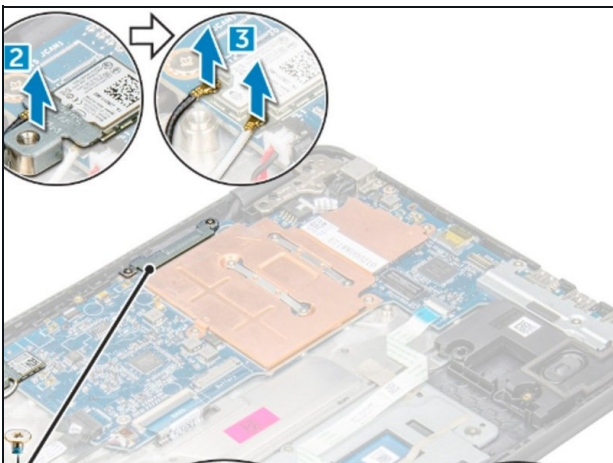
- Connect the display cable to the connector on the system board.

Step 7 — Securing the Screws



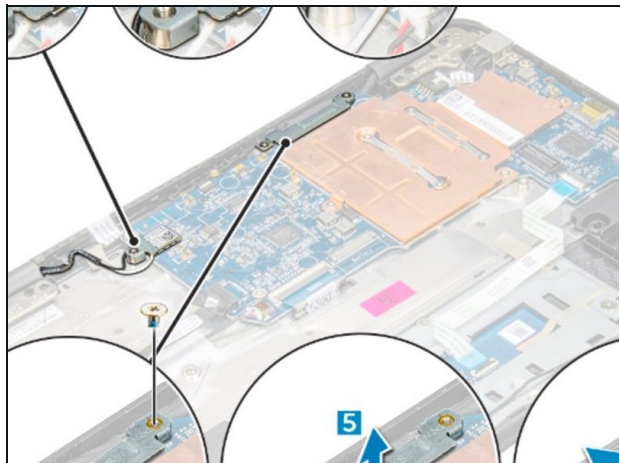
- Place the metal bracket over the (display cable) connector, and tighten the M2.0x3.0 screws to secure the display cable to the computer.

Step 8 — Connecting the WLAN cables.



- Connect the WLAN cables.

Step 9 — Placing the Metal Bracket



- Place the metal bracket, and tighten the M2.0x3.0 screw to the WLAN cable on the system board.

To reassemble your device, follow these instructions in reverse order.