



# Samsung Galaxy S8 Plus SIM Card or SD Card Replacement

Eject the SIM card tray to replace the network SIM card and/or SD card in your S8+.

Written By: Jeff Suovanen



## INTRODUCTION

The SIM card tray houses both the SIM card for your cellular network as well as the (optional) SD card for expanded storage. Use this guide to eject the tray and remove or replace either card. The S8 and S8+ both use the same tray, so the same part is compatible with either phone.



### TOOLS:

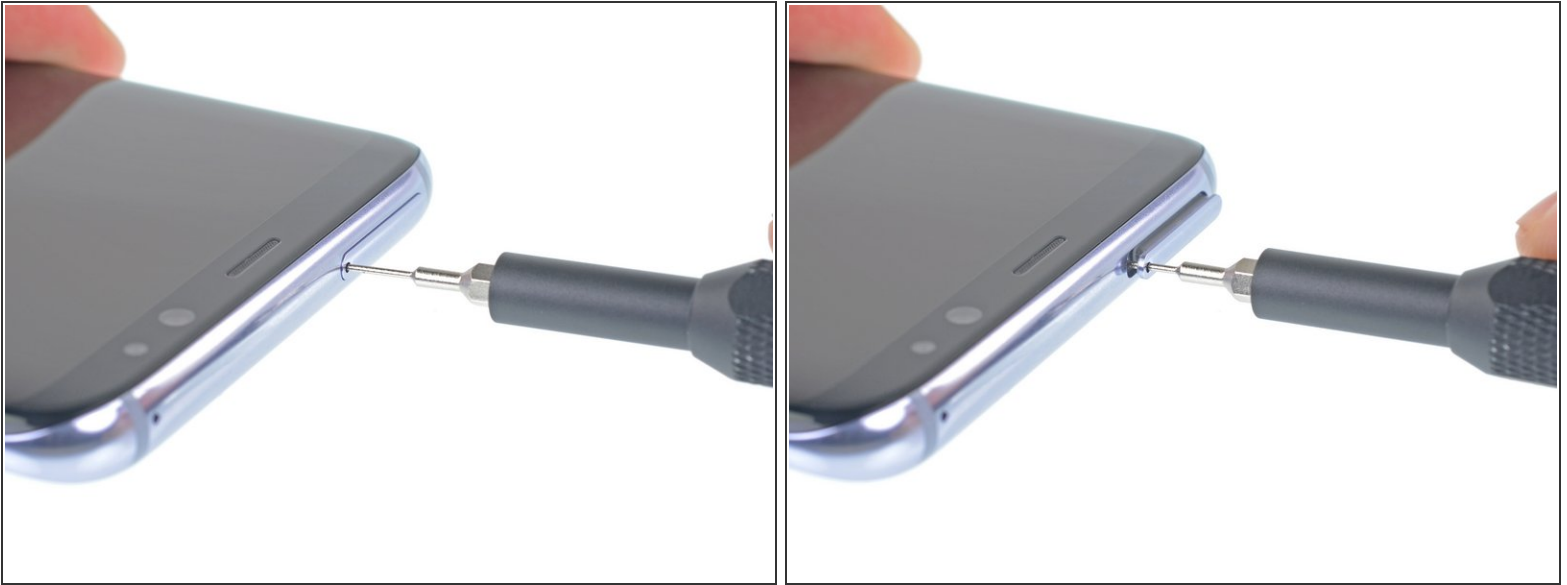
- [SIM Card Eject Tool](#) (1)



### PARTS:

- [Galaxy S8/S8+ SIM and SD Card Tray](#) (1)

## Step 1 — SIM Card or SD Card



**⚠** The SIM card tray's ejection hole looks almost exactly like the microphone hole, located just a short distance away. Insert your tool only where indicated. Inserting your tool into the microphone hole may result in permanent microphone damage.

- Insert a SIM card eject tool or a paperclip into the small hole in the SIM card tray, on the top edge of the phone.
- Press firmly to eject the tray.

## Step 2



- Grab the tray and pull straight out to remove it.
  - ⓘ SIM and/or SD cards will fall out of the tray easily.
- ✦ When reinserting the SIM card, ensure that it is in the proper orientation relative to the tray.
- ✦ A thin rubber gasket near the outer end of the SIM tray provides water and dust protection. If this gasket is damaged or missing, replace the gasket to protect your phone's internal components.

To reassemble your device, follow these instructions in reverse order.

After you've completed the repair, [follow this guide](#) to test your repair.