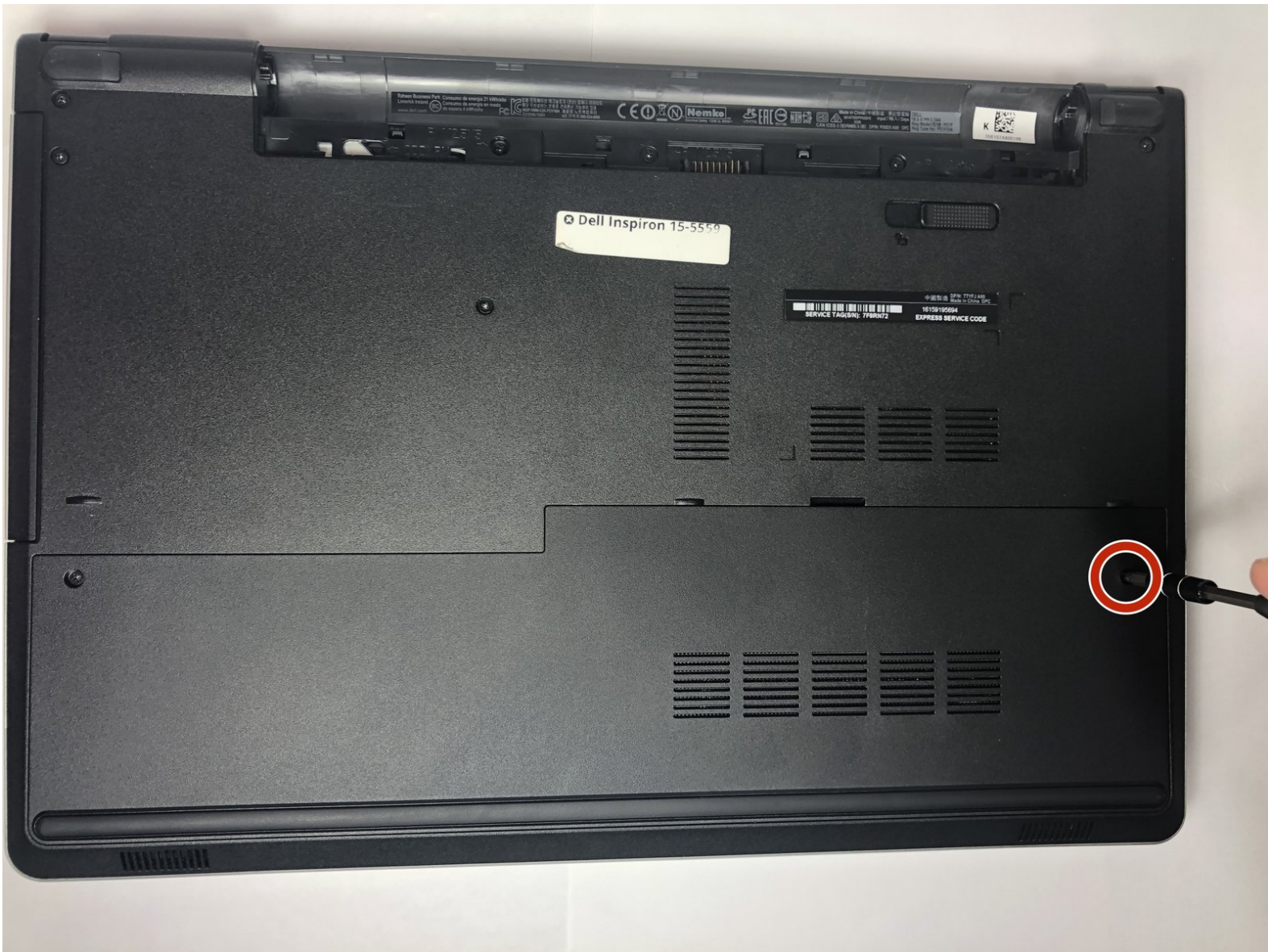




Dell Inspiron 15-5559 Back Panel Replacement

Before removing the back panel, make sure the...

Written By: Kyla Ward



INTRODUCTION

Before removing the back panel, make sure the device is disconnected from any power source. Make sure that your battery has also been removed.



TOOLS:

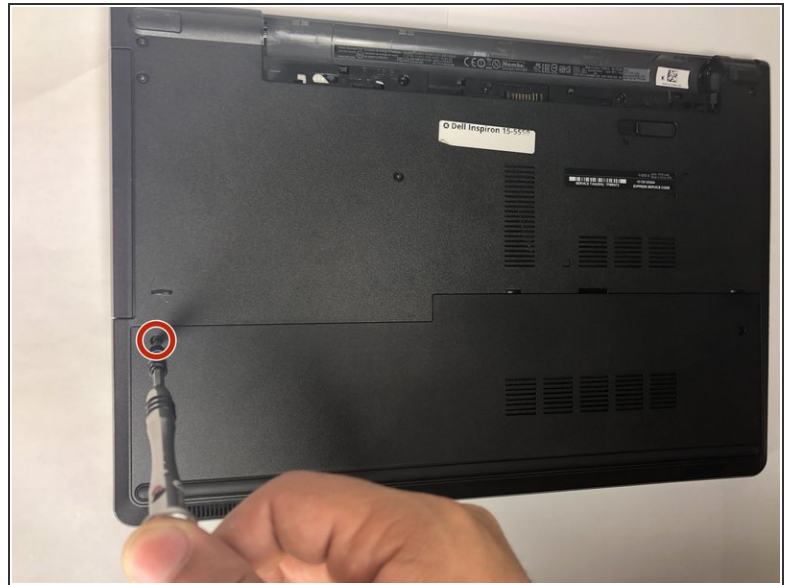
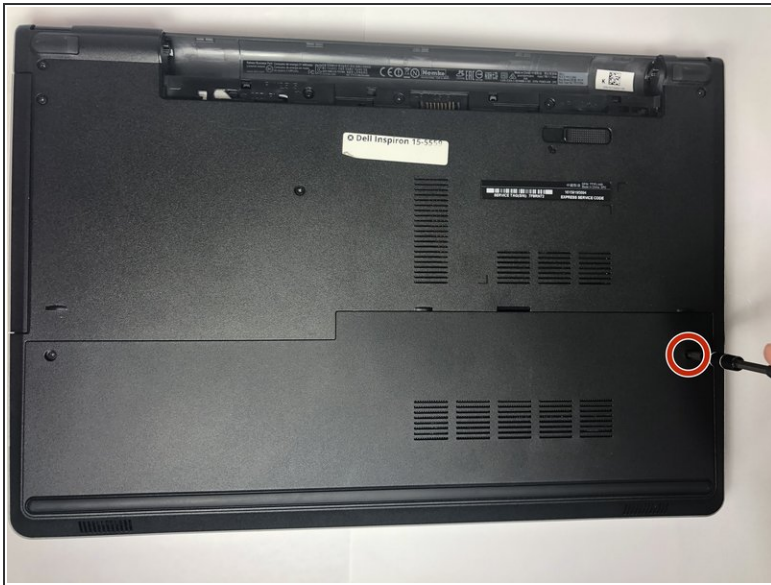
- [Phillips #1 Screwdriver](#) (1)
- [Spudger](#) (1)



PARTS:

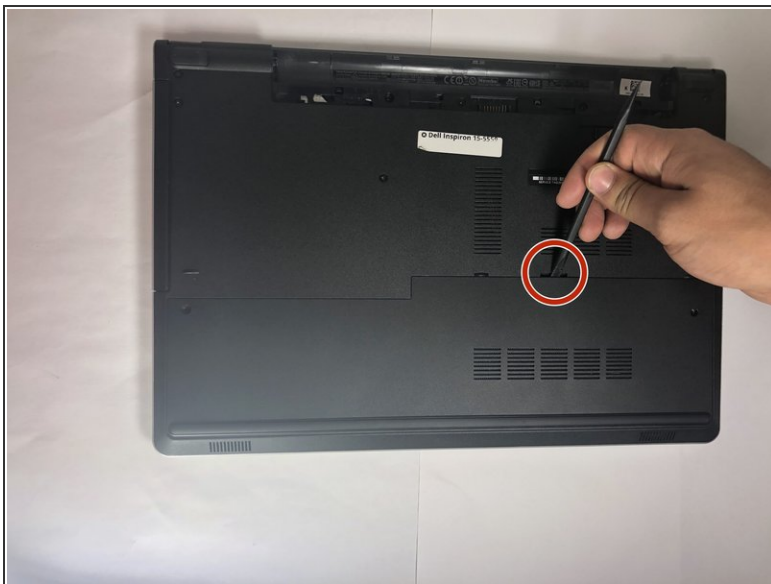
- [Dell Inspiron 15-5559 Back Panel](#) (1)
- [M2.5x8 socket head screw](#) (2)

Step 1 — Back Panel



- Use a Phillips #1 screwdriver to remove the two 2.5x8mm screws on the back panel.

Step 2



- Place the plastic spudger in the slot. Using the flat side of the spudger pry the back panel upward and off.
- ⓘ Do not be afraid to use a bit of muscle, as the panel does not come off without some force.

To reassemble your device, follow these instructions in reverse order.