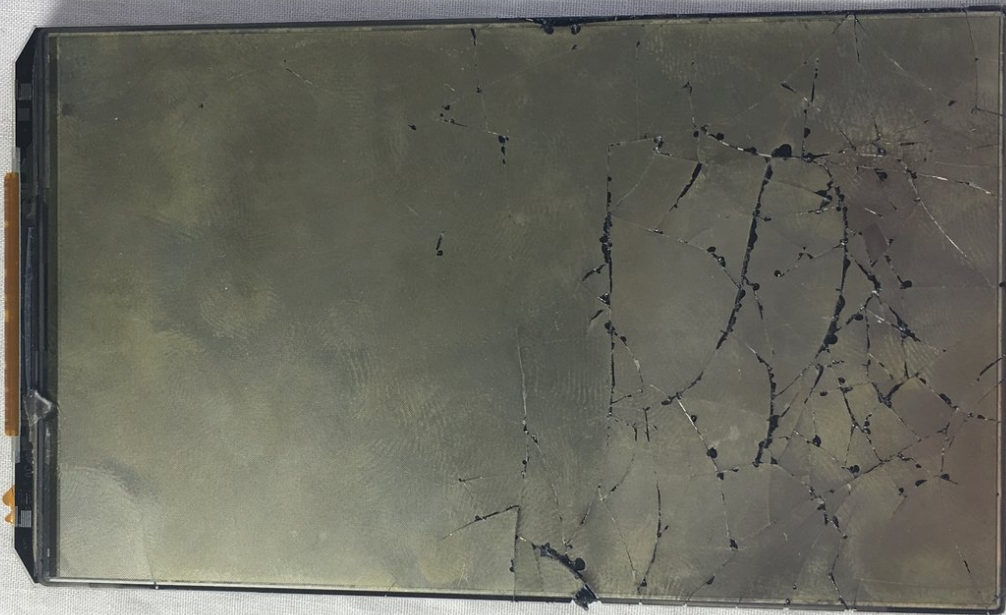




Samsung Galaxy Luna LCD display Replacement

Use this guide to replace your Samsung Luna LCD display.

Written By: xingyu chen



INTRODUCTION

Use this guide to replace your Samsung Luna LCD display.



TOOLS:

- [Suction Handle](#) (1)
 - [Spudger](#) (1)
-

Step 1 — LCD display



- Attach a small suction cup to the lower half of the glass screen.

Step 2




- Apply pressure to the middle section of the screen while pulling up the lower edge by pivoting your wrist.

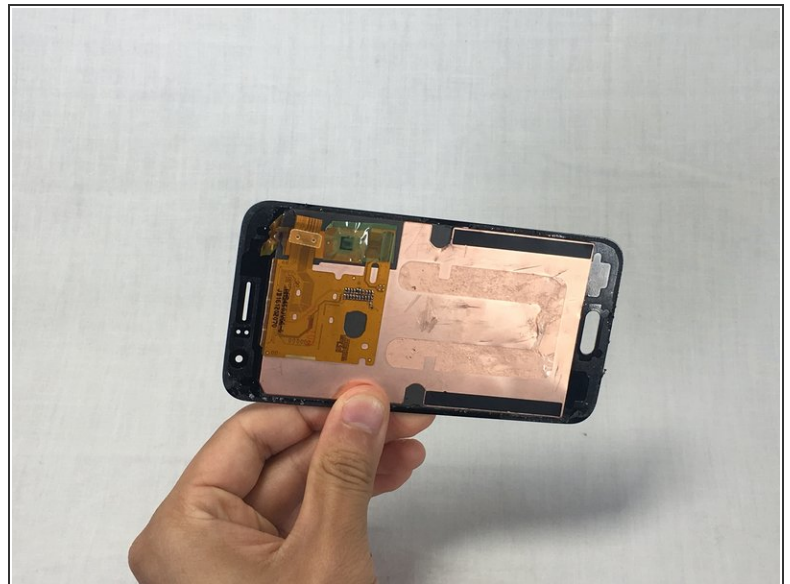
Step 3



- Once you've opened a large enough gap, insert a Spudger tool between the glass and the motherboard.
- Slide the Spudger tool around the gap until the screen is completely separated from the motherboard.

 The LCD is very fragile, be careful when sliding the spudger around the gap.

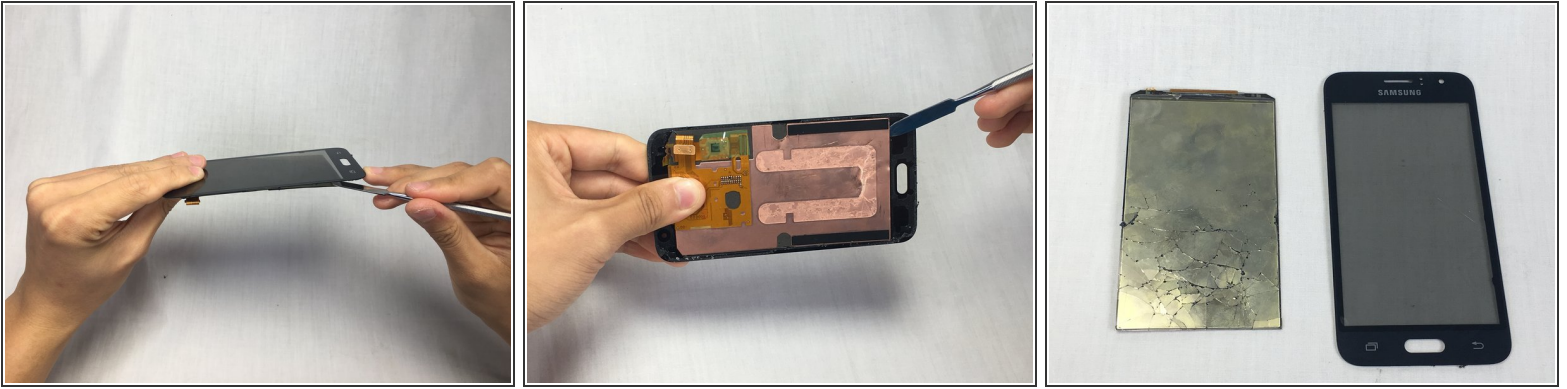
Step 4



- Pull the rear panel up and away to completely separate it.

 make sure the panel is completely detached from the phone frame before separating it.

Step 5



- Place the spudger tool between the LCD and the glass screen.
- Slide the spudger tool in between the screen and the display until both are completely separated from each other.

 The LCD is very fragile, do not apply excessive force when prying the glass panel

To reassemble your device, follow these instructions in reverse order.