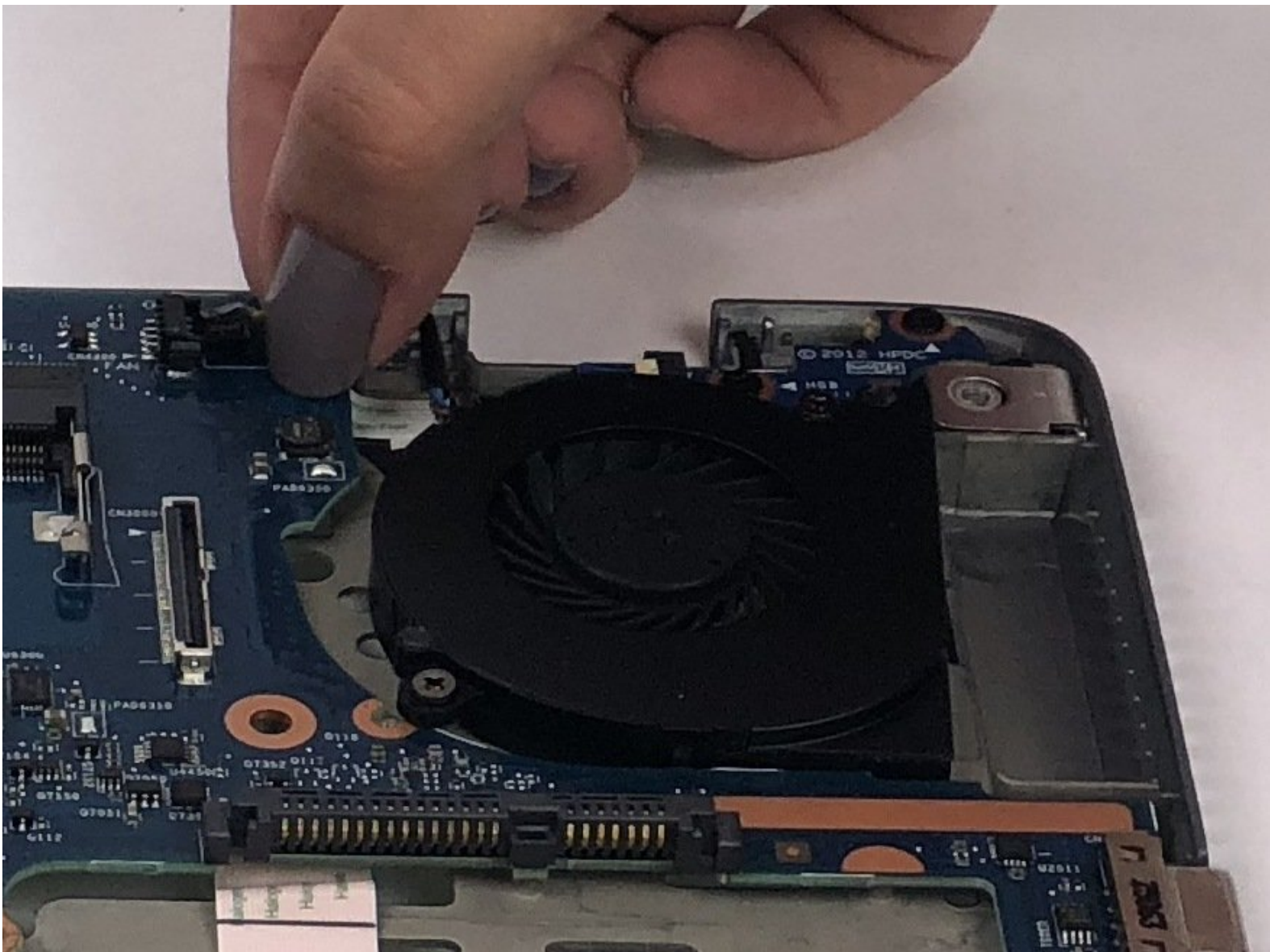




# HP Elitebook 820 G1 Fan Replacement

This guide explains how to replace the fan.

Written By: Alex



# INTRODUCTION

Fans are mechanical and fail over time. If the laptop is easily overheating or the fan is not heard, the fan is at fault. This guide explains how to replace the fan.



## TOOLS:

- [iFixit Opening Tools](#) (1)
- [Phillips #00 Screwdriver](#) (1)
- [T7 Torx Screwdriver](#) (1)



## PARTS:

- [HP EliteBook 820 G1 and G2 Fan](#) (1)

## Step 1 — Battery



⚠ Ensure the laptop is completely powered off and power adapter is unplugged before removing the battery.

- Turn over laptop so that the bottom is showing.
- Unlock the latch.

## Step 2



- Remove the back cover and you will then be able to see the battery.

### Step 3



- Unlatch the two latches securing the battery in the case.

### Step 4



- Use a plastic opening tool to lift and remove the battery.

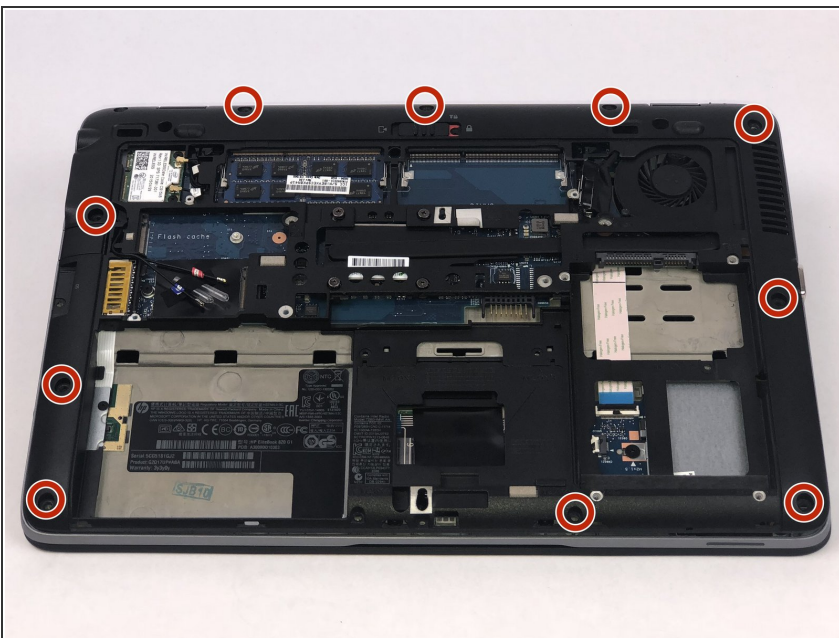


## Step 5 — Fan



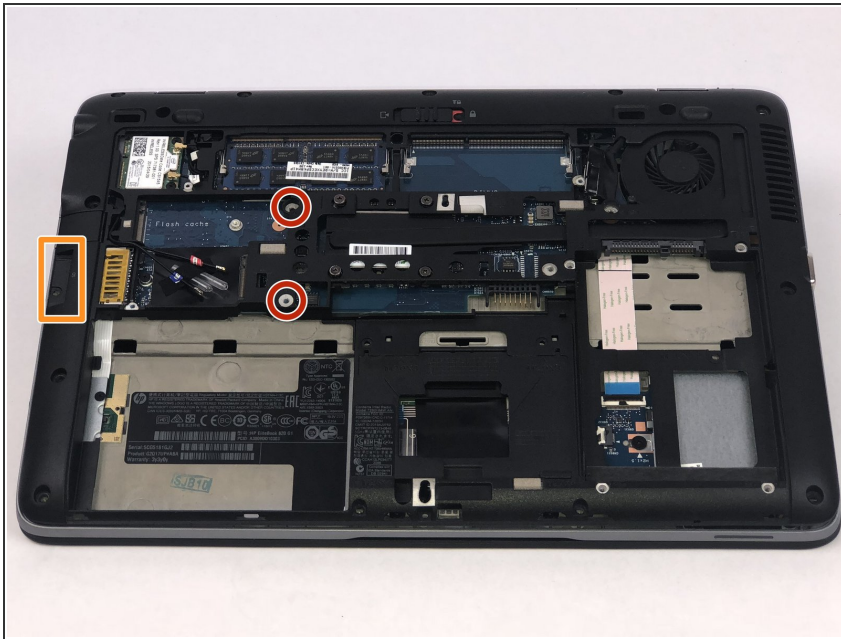
- Remove the hard drive by unscrewing the four 8mm screws with the T7 philip's head.

## Step 6



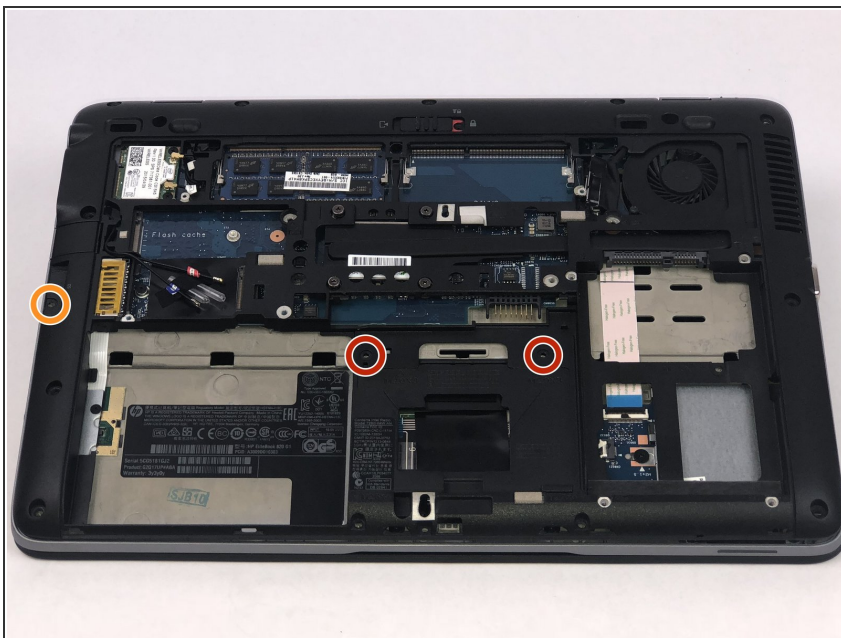
- Pry off ten rubber paddings on the outer edge of the laptop to reveal the torx screws.
- Unscrew the ten 8mm torx screws that are under the rubber paddings using the T7 tip torx screwdriver.

## Step 7



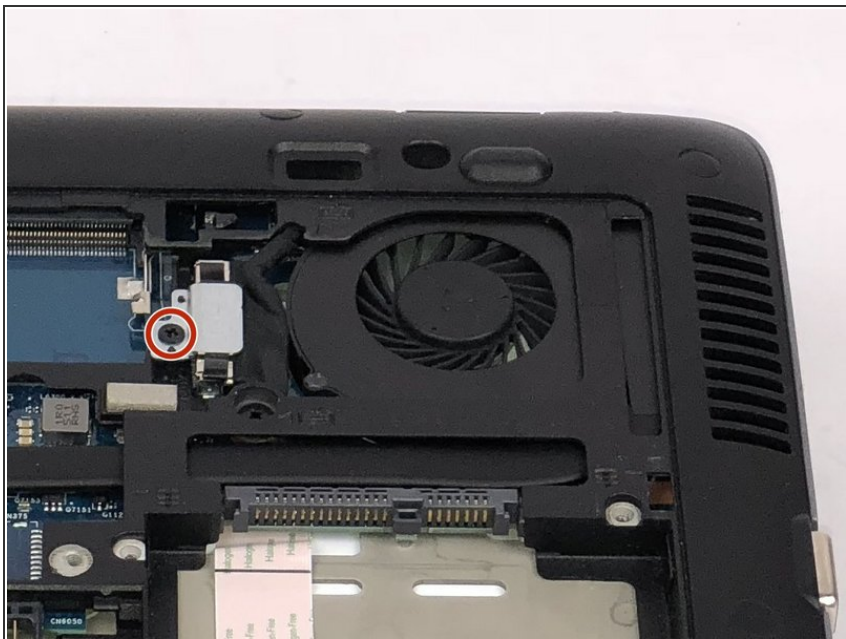
- Remove the two 4mm screws indicated by the M2.5X4 using the J00 tip screwdriver.
- Remove SD card cap by just sliding out to reveal one screw.

## Step 8



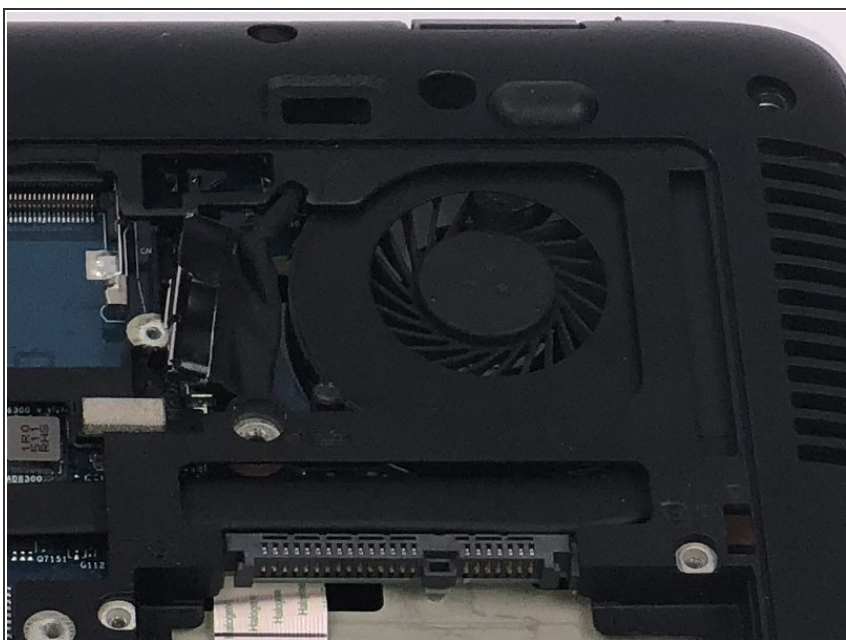
- Remove the two 3mm screws indicated by the M2.03 using the J00 tip screwdriver.
- Remove the 4mm SD card screw using the J00 tip.

## Step 9



- Remove the one 4mm fan screw using the J00 tip screwdriver.
- Remove screw and metal plate to expose ribbon cable connector.

## Step 10



- Use an opening tool to pry up the ribbon connector to disconnect.



## Step 11



- Turn laptop over back to normal position as shown in the image.
- Use opening tools to pry up keyboard.
- ⓘ When prying up keyboard, be sure to start near any corner of the keyboard.
- ⚠ There are two ribbon cables that must be disconnected before fully removing keyboard.

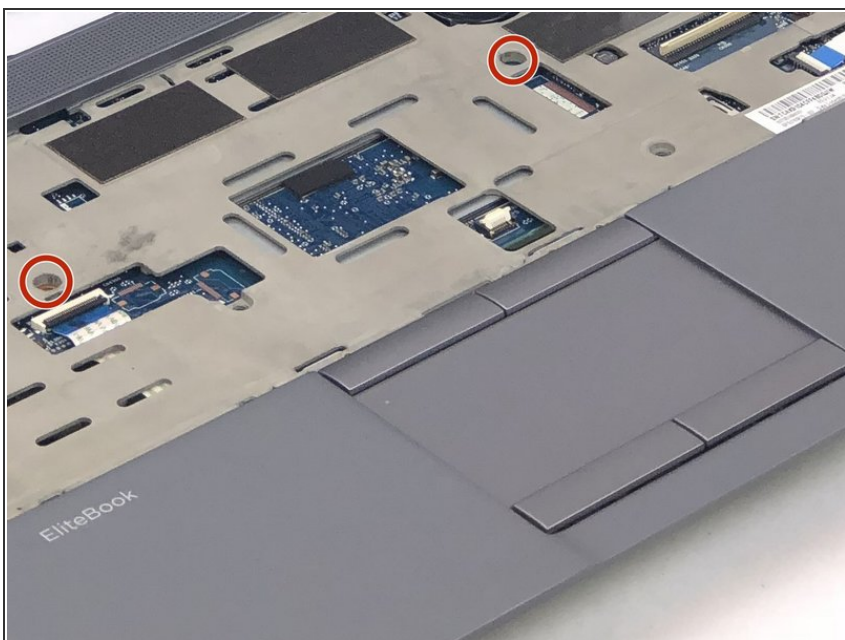
## Step 12



- Carefully lift keyboard on one side to expose the two ribbon cables.
- Use an opening tool to lift up the locking clip and unplug the two ribbon cables.

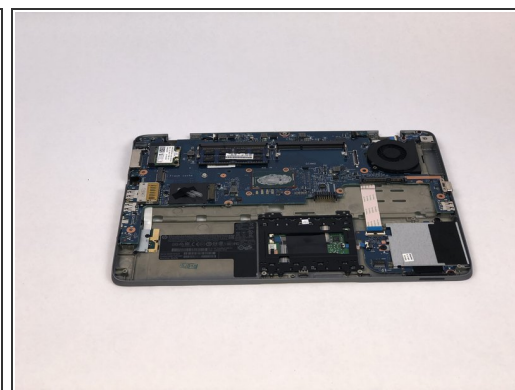


## Step 13



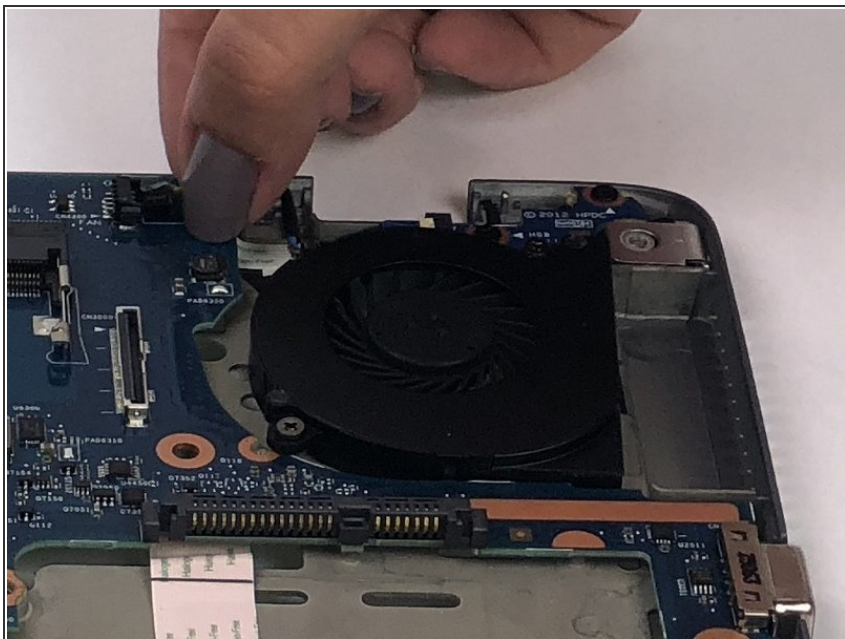
- Remove the two 4mm screws centered notated by the keyboard logo using the J00 tip.

## Step 14



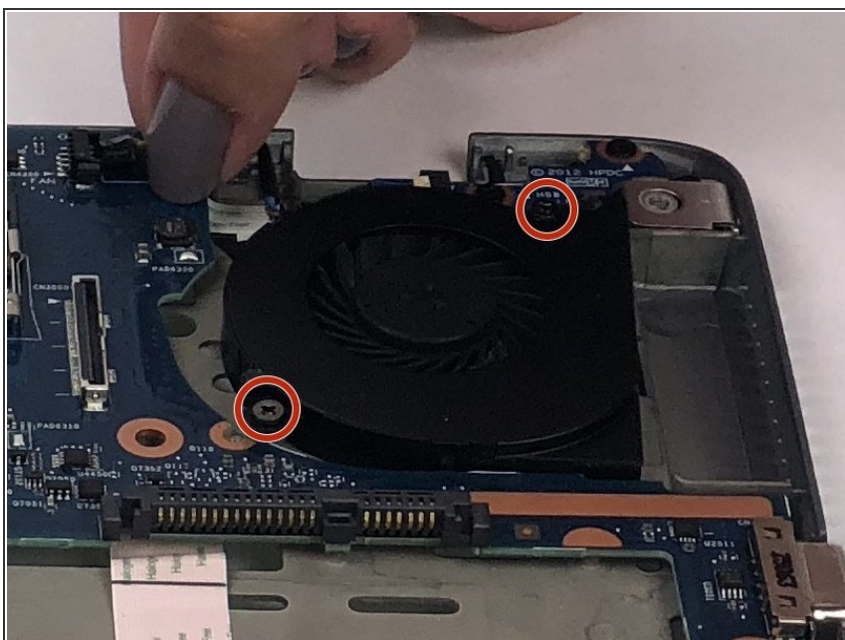
- Once keyboard has been fully removed, the system case containing the motherboard can be lifted out easily.
- The display is connected to the shell of the laptop.

## Step 15



- Unplug fan cable by pulling away from its connector.

## Step 16



- Unscrew the two 6mm fan screws using the J00 tip.
- ⓘ Fan screws are encased in springs and cannot be removed.

To reassemble your device, follow these instructions in reverse order.