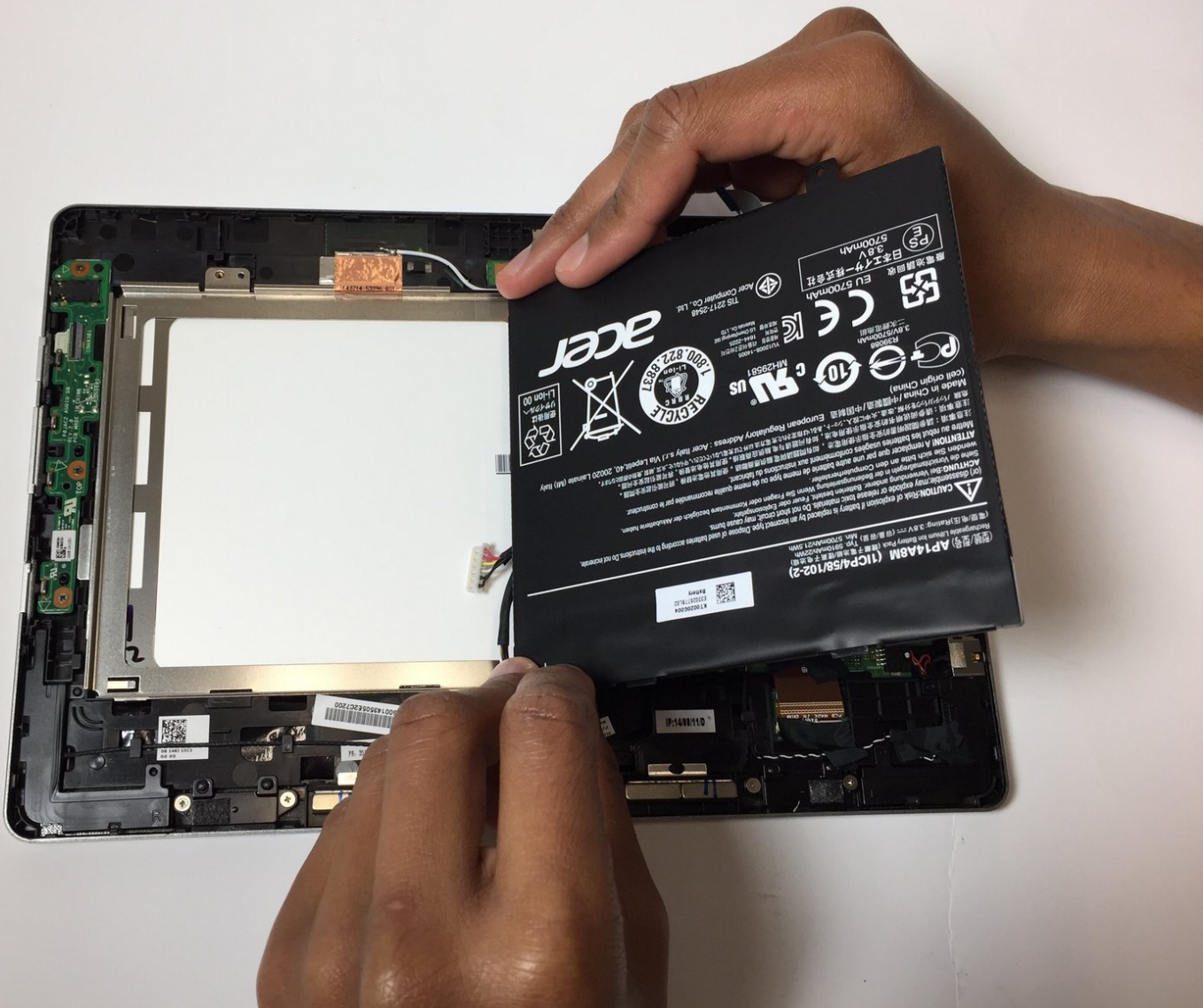




Acer Aspire Switch 10 SW5-012-18MY Battery Replacement

If your device is not powering on or charging properly, you may need to replace the battery. You can replace the battery by following this guide.

Written By: Grecia Corrada



INTRODUCTION

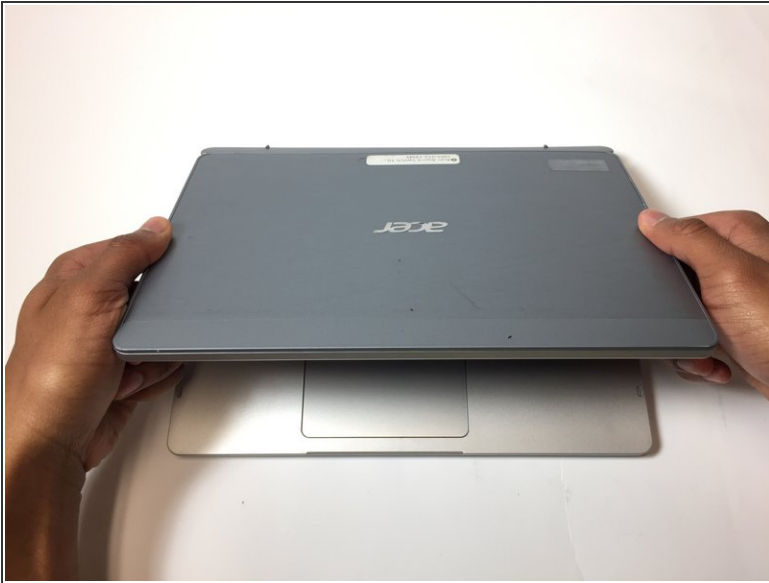
If your device is not charging or turning on, you may need to replace the internal battery on your device. Before attempting to replace the battery, please visit the troubleshooting page for this device. If you have attempted the recommendations on the troubleshooting page and the device is still not functioning properly, you can replace the internal battery in your device. Carefully follow the steps in this guide to replace the battery.



TOOLS:

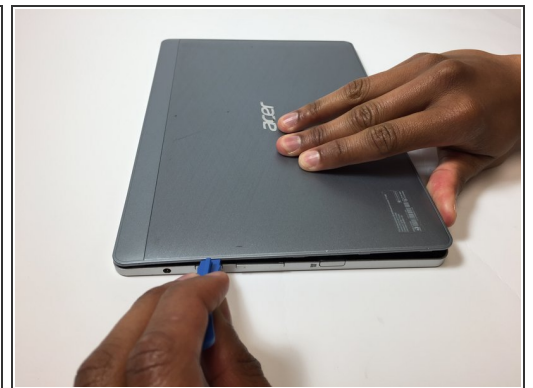
- [iFixit Opening Tool](#) (1)
 - [Phillips #000 Screwdriver](#) (1)
-

Step 1 — Battery



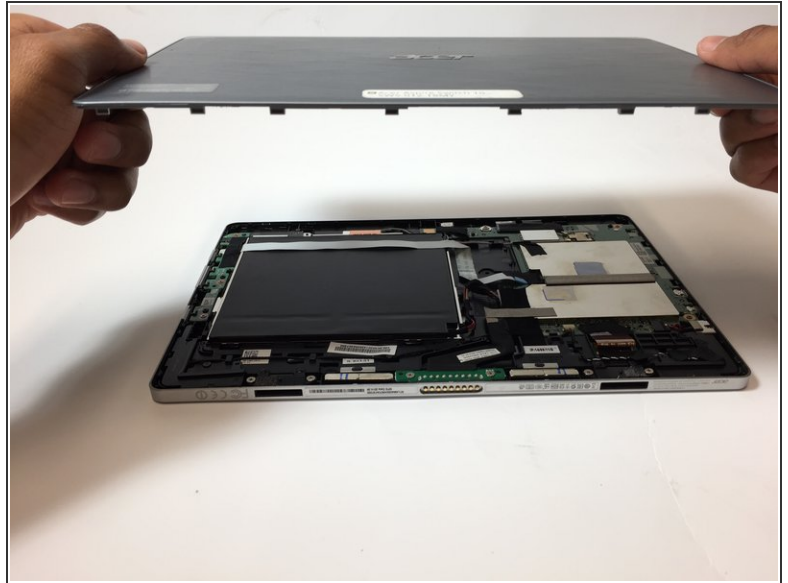
- Remove the tablet from the keyboard.
- ⓘ You will not be needing the keyboard for this guide.

Step 2



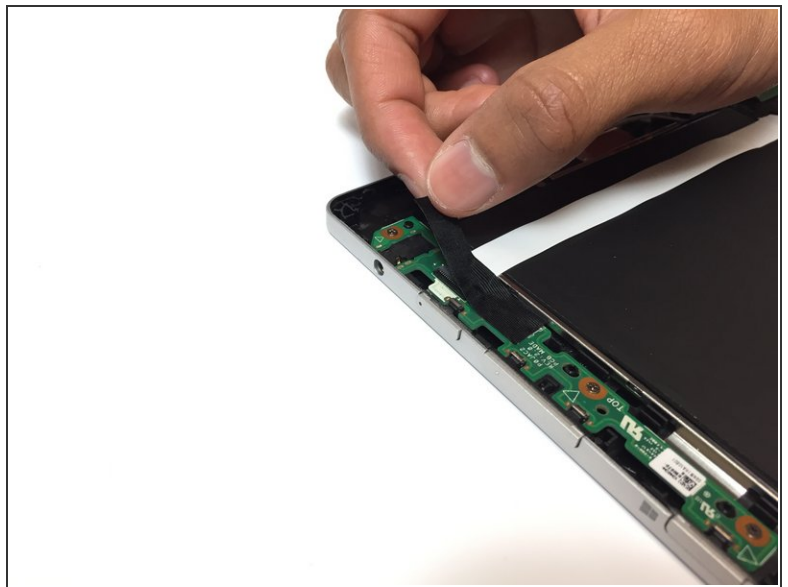
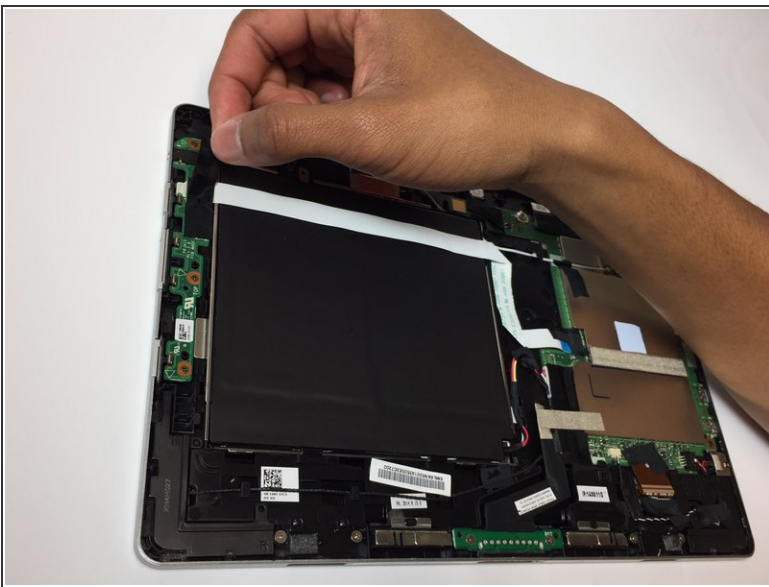
- Use the opening tool to open the back cover. The opening tool should fit under the cover if you place it above the power button.
- Lift this side of the back cover once the opening tool is inside the device.
- Use the opening tool and your hands to gradually work around the edges of the cover.

Step 3



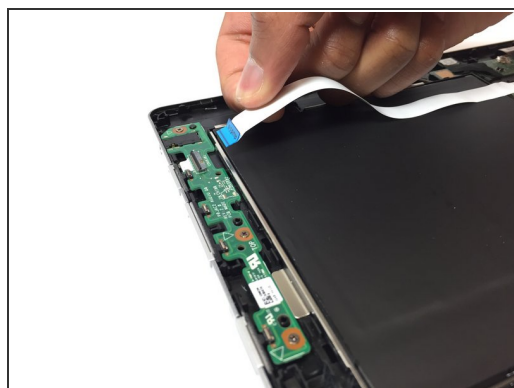
- Lift the back cover off of the device with your hands.
- ⓘ You will need to use some force to pull off the back cover.

Step 4



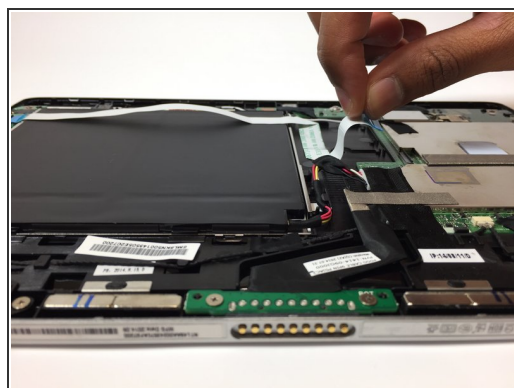
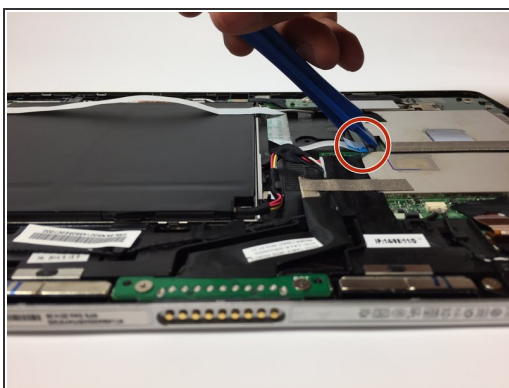
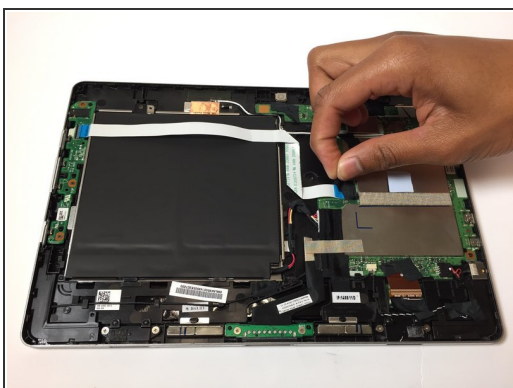
- Remove the piece of black, thin tape that is attached to the circuit board closest to the power button.

Step 5



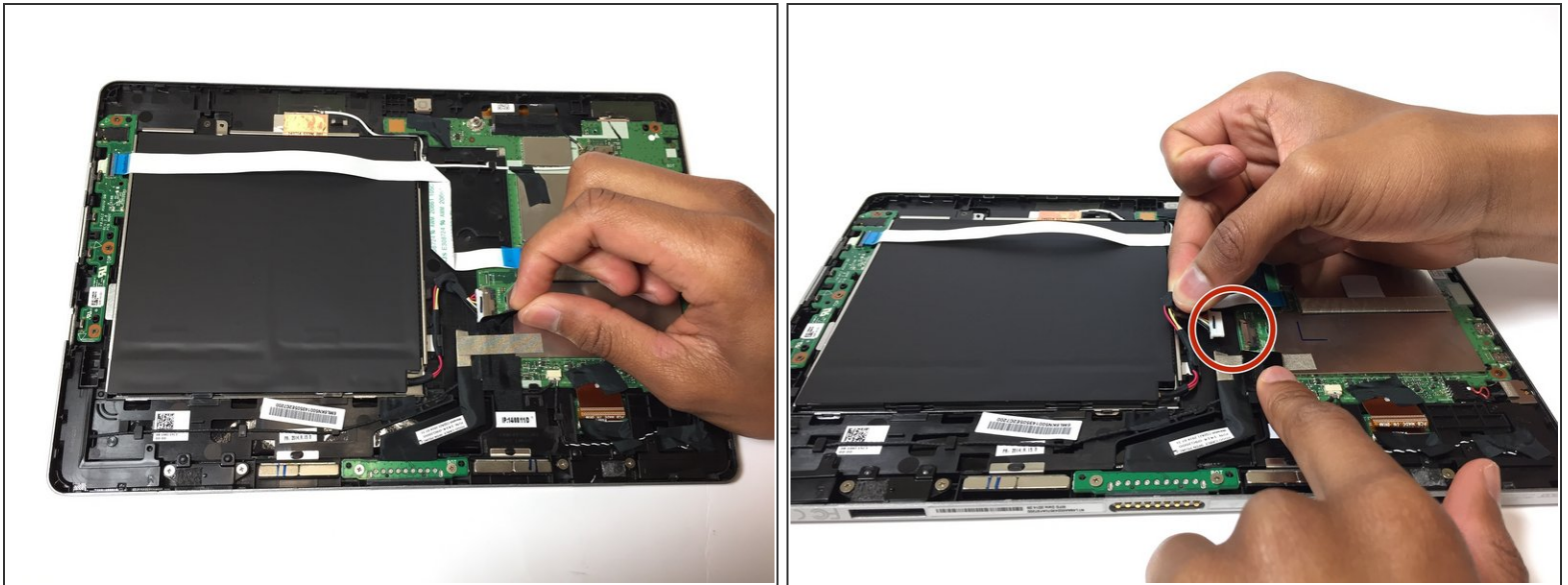
- Use the opening tool to lift the ZIF connector holding the ribbon cable in place on the circuit board.
- Pull out the ribbon cable from the circuit board. This cable should have the word "Audio" on it.

Step 6



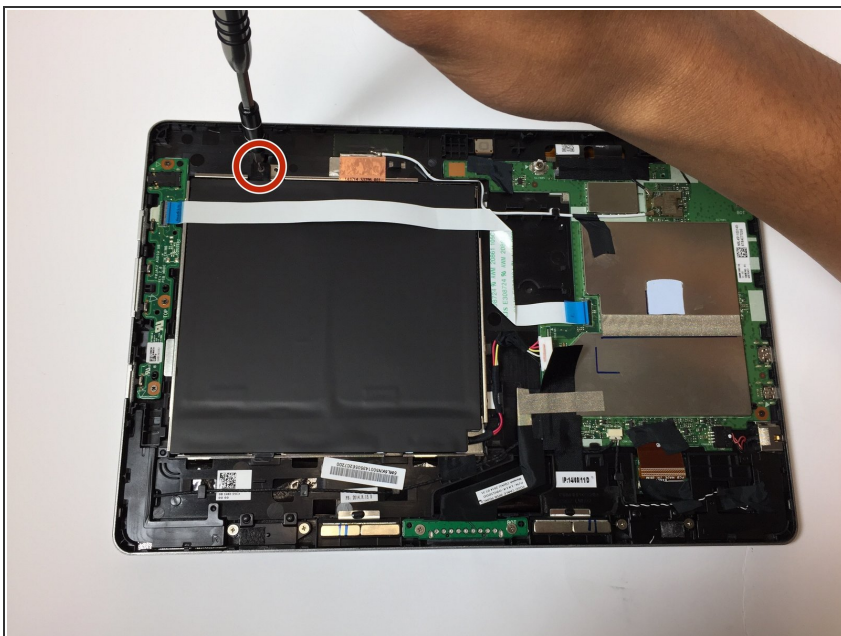
- Remove the piece of thin, black tape that is attached to the circuit board on the other side of the battery.
- Use the opening tool to lift the black ZIF connector holding the ribbon cable in place.
- Pull out the ribbon cable from the circuit board.

Step 7



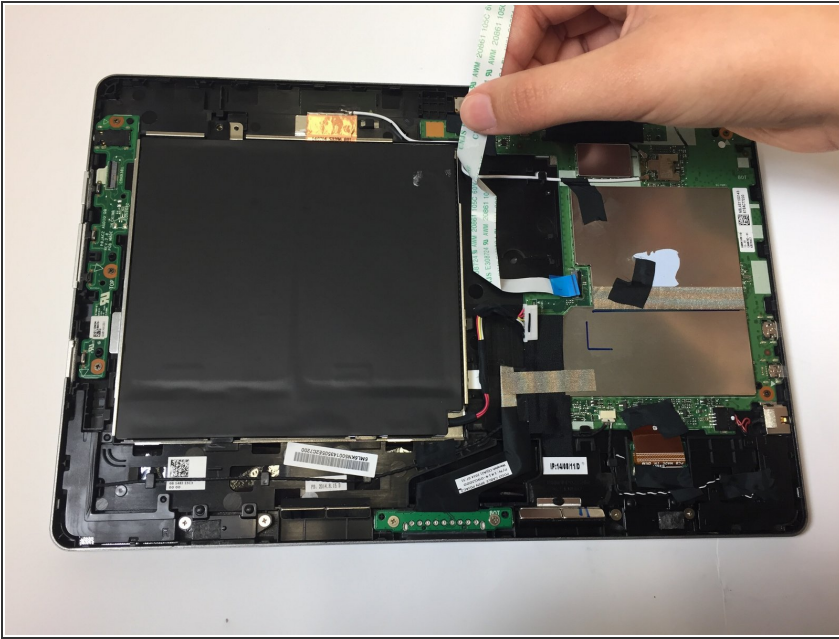
- Partially remove the piece of black tape that is holding the bundled cable connector to the battery in place.
- Pull on the battery's bundled cable connector to unplug it from the circuit board.

Step 8



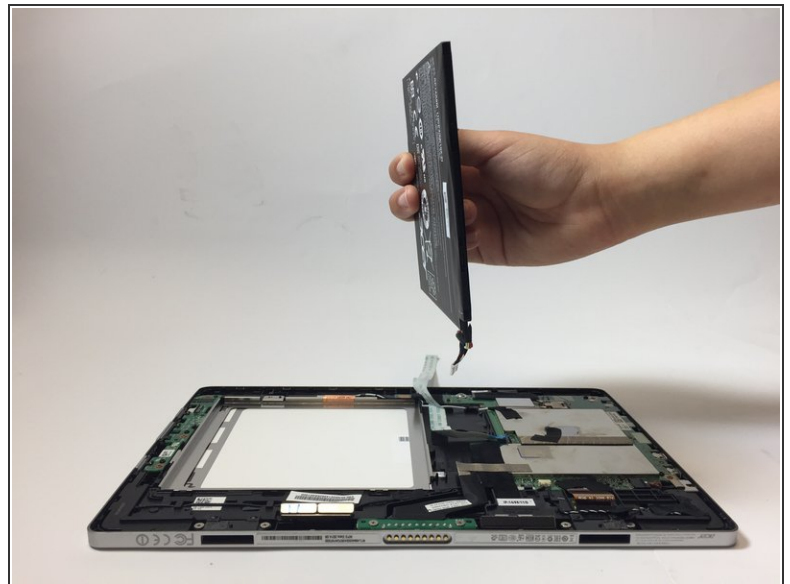
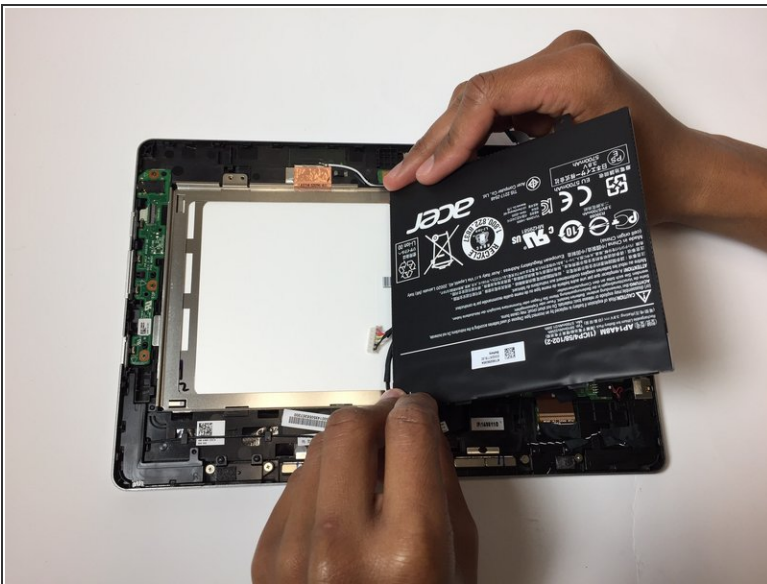
- Using the Phillips #000 screwdriver, remove the 3 mm screw that is holding the battery in place.

Step 9



- Gently remove the ribbon cable from the battery.

Step 10



- Carefully remove the battery from the device by lifting it up.

To reassemble your device, follow these instructions in reverse order.