



Samsung Galaxy S6 Edge+ Midframe Replacement

Replace a scratched or dented midframe, or replace a faulty NFC antenna or wireless charging coil on a Samsung Galaxy S6 Edge Plus.

Written By: Adam O'Camb



INTRODUCTION

Use this guide to replace a damaged midframe assembly on your Samsung Galaxy S6 Edge+. The midframe assembly includes the NFC antenna and wireless charging coil, so use this guide to replace those as well.

This guide involves removing the rear glass, which will destroy the adhesive holding it in place. The adhesive will need to be replaced before the rear glass is reinstalled.



TOOLS:

- [iOpener](#) (1)
- [Suction Handle](#) (1)
- [iFixit Opening Picks set of 6](#) (1)
- [Tweezers](#) (1)
- [Phillips #00 Screwdriver](#) (1)



PARTS:

- [Galaxy S6 Edge Plus Rear Cover Adhesive](#) (1)

Step 1 — Rear Glass



- [Heat an iOpener](#) and apply it to the volume button side of the phone for about two minutes.
- ⓘ You may need to reheat and reapply the iOpener several times to get the phone warm enough. Follow the iOpener instructions to avoid overheating.
- ⚠ A hair dryer, heat gun, or hot plate may also be used, but be careful not to overheat the phone—the OLED display and internal battery are both susceptible to heat damage.

Step 2



- Once the back panel is hot to the touch, apply a suction cup near the center of the phone, and as close as possible to the edge of the panel.
- Lift on the suction cup to create a small gap underneath the rear glass, and insert an opening pick into the gap.

Step 3



- Slide the pick along the side of the phone to cut the adhesive securing the rear panel.
- ❗ Go slowly so that the pick doesn't slip out of the seam. If cutting becomes difficult, reheat and reapply the iOpener.

Step 4



- Repeat the heating and cutting procedure for the remaining three sides of the phone.
- Leave an opening pick under each edge to prevent the adhesive from resealing.

Step 5



- Use an opening pick to slice through any remaining adhesive.
- Remove the rear glass.

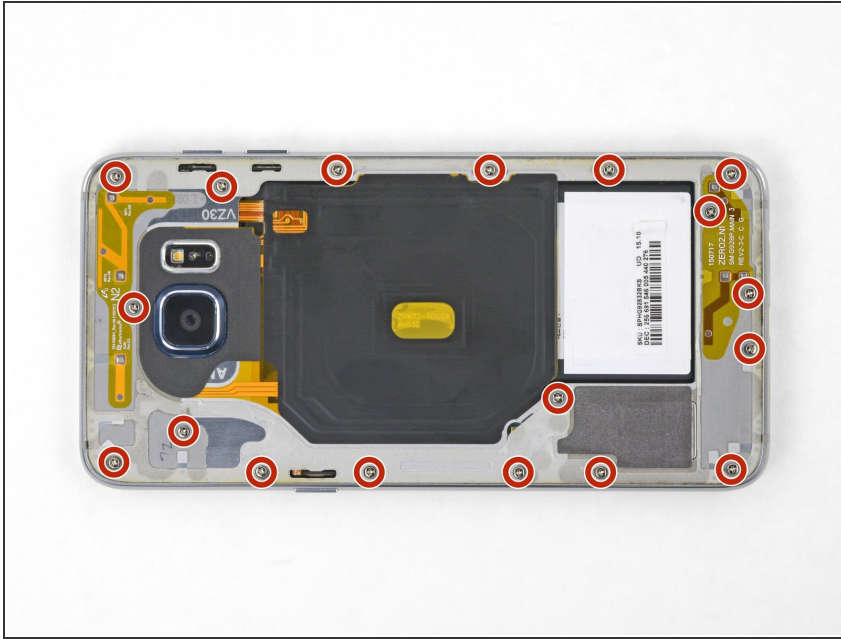
Step 6



- ★ To reinstall the back cover:
- First use tweezers to peel away any remaining adhesive from both the back cover and the phone's chassis.
 - Then, clean the adhesion areas with high concentration isopropyl alcohol (at least 90%) and a lint-free cloth. Swipe in one direction only, not back and forth. This will help prep the surface for the new adhesive.

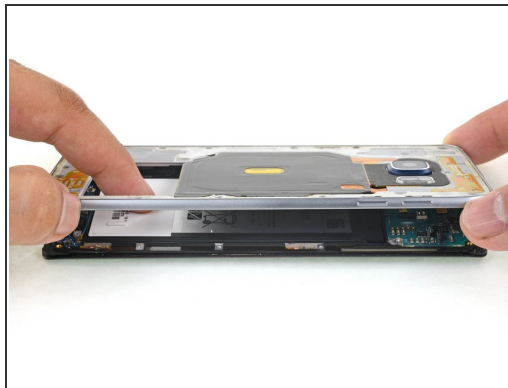
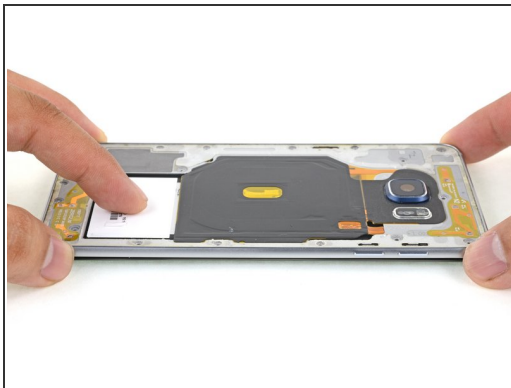
- Be sure to turn on your phone and test your repair before installing new adhesive and resealing the phone.
- Replacement adhesive comes in a pre-cut sheet to match the exact contours of the back cover. The sheet is asymmetrical, so make sure the screw holes in the adhesive sheet line up with the screws on the frame before applying the adhesive.
- ① If the adhesive sheet is not available, you can use a high-bond double-sided tape, such as [Tesa 61395](#).
- After installing the rear cover, apply strong, steady pressure to your phone for several minutes to help the adhesive form a good bond, such as by placing it under a stack of heavy books.
- ① If desired, you may reinstall the back cover without replacing the adhesive. Remove any large chunks of adhesive that might prevent the back cover from sitting down flush. After installation, heat the back cover and apply pressure to secure it. It won't be waterproof, but the glue is usually more than strong enough to hold.

Step 7 — Midframe



- Remove eighteen 3.2 mm screws from the midframe.

Step 8



- Press down on the back of the battery while you lift up on the edges of the midframe to separate the midframe from the rest of the phone.

To reassemble your device, follow these instructions in reverse order.