



# Kodak PixPro AZ251 Shutter Button Replacement

Learn how to repair and replace a faulty shutter button for your Kodak PixPro AZ251.

Written By: Rachel Llewellyn



---

# INTRODUCTION

In this guide, you will learn how to repair and replace a loose or faulty shutter button on your Kodak PixPro AZ251.

---

## TOOLS:

- [JIS #000 Screwdriver](#) (1)
  - [JIS #00 Screwdriver](#) (1)
  - [Phillips #00 Screwdriver](#) (1)
  - [Tweezers](#) (1)
  - [iFixit Opening Tools](#) (1)
-

## Step 1 — Batteries



- Slide switch to open lock position.

## Step 2



- Press down on the battery cover and slide outwards to open.



### Step 3



- Remove the batteries.

### Step 4 — Back Cover



- Remove a total of four 5mm JIS #000 screws from around the camera:
  - Two screws from the right side.
  - Two screws from the left side.

## Step 5



- Remove the single 5mm Phillips #00 screw from the bottom.

## Step 6



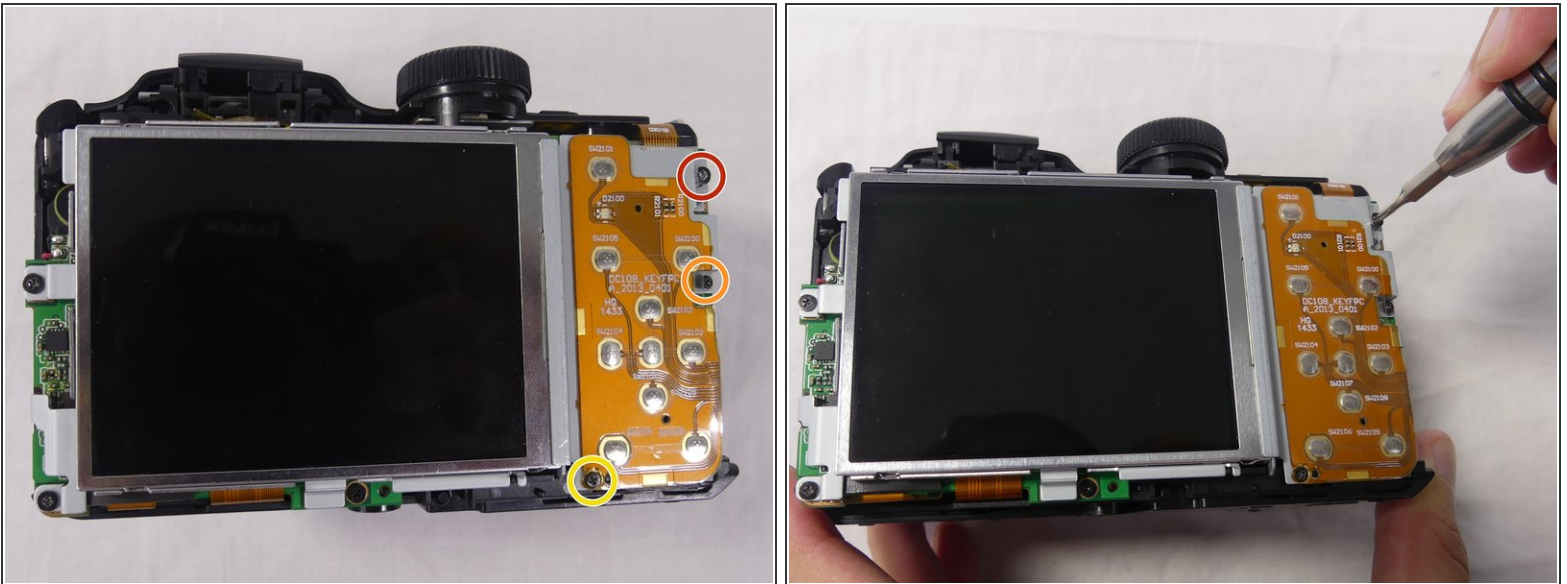
- Open the flash module.
- Remove the two 6mm JIS #00 screws found inside of the flash housing.

## Step 7



- Use a plastic opening tool to pry apart both halves of the camera.
- Remove the back panel.

## Step 8 — LCD Screen



- Remove these three JIS #000 screws from the control board:
  - 5mm screw.
  - 4mm screw.
  - 2mm screw.



## Step 9



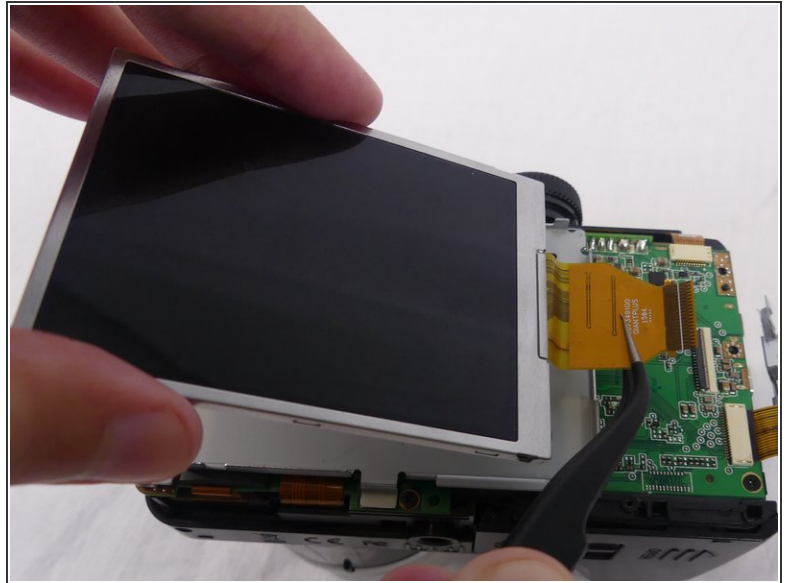
- Pull the small metal switch plate to the side.

## Step 10



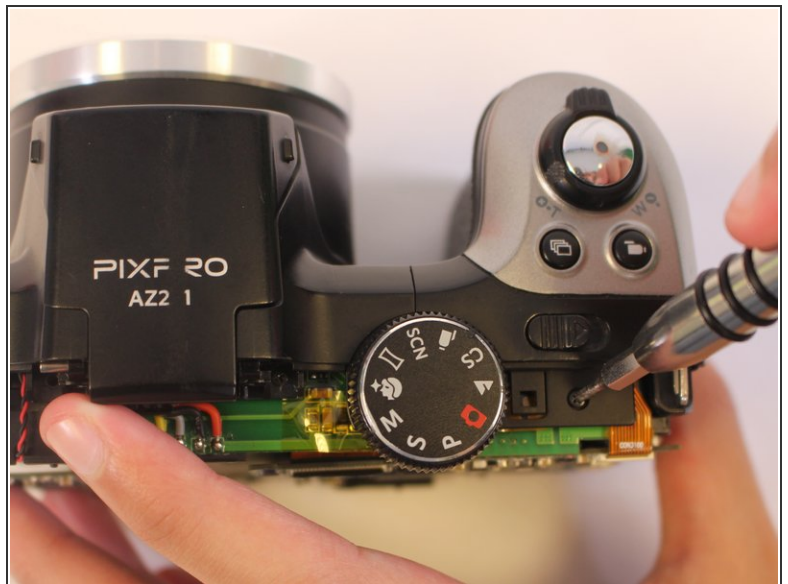
- Pry the LCD screen out of the metal housing plate with a plastic opening tool.

## Step 11



- Use a spudger to flip up the retaining flap on the display ribbon cable [ZIF](#) socket.
- Pull the orange cable out of the socket.

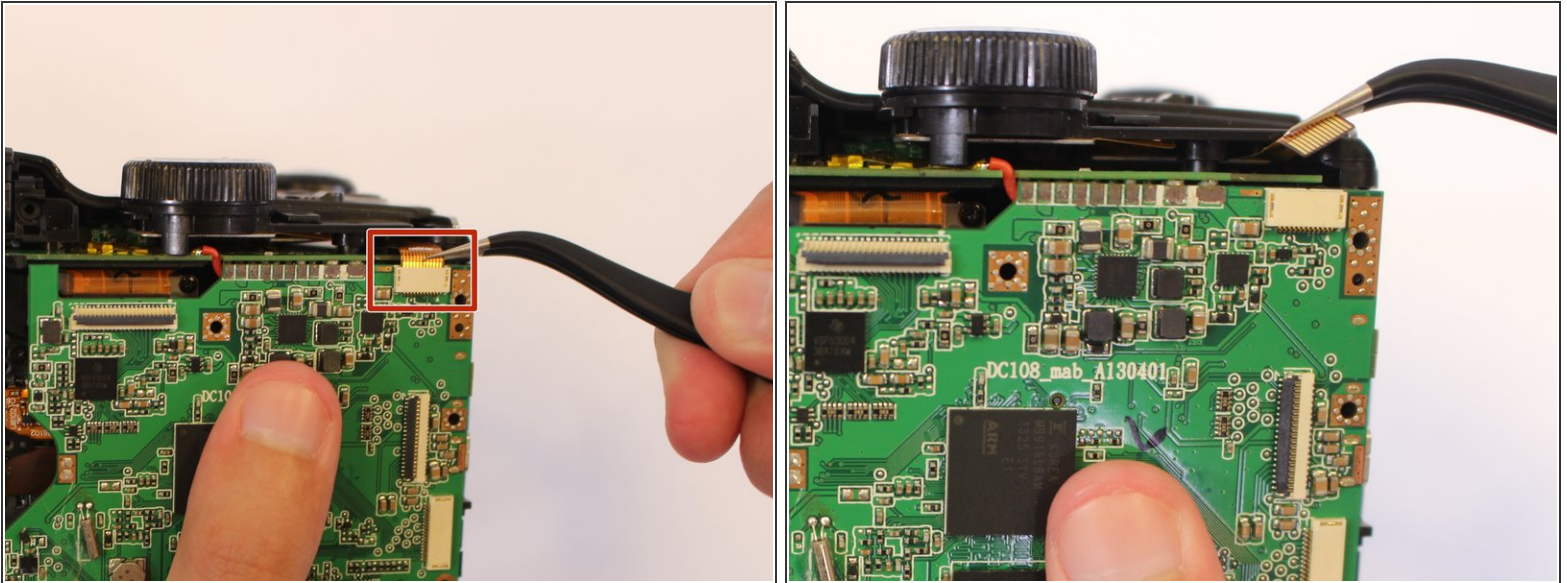
## Step 12 — Shutter Button



- Remove one 4mm JIS #000 screw from the top of the camera.

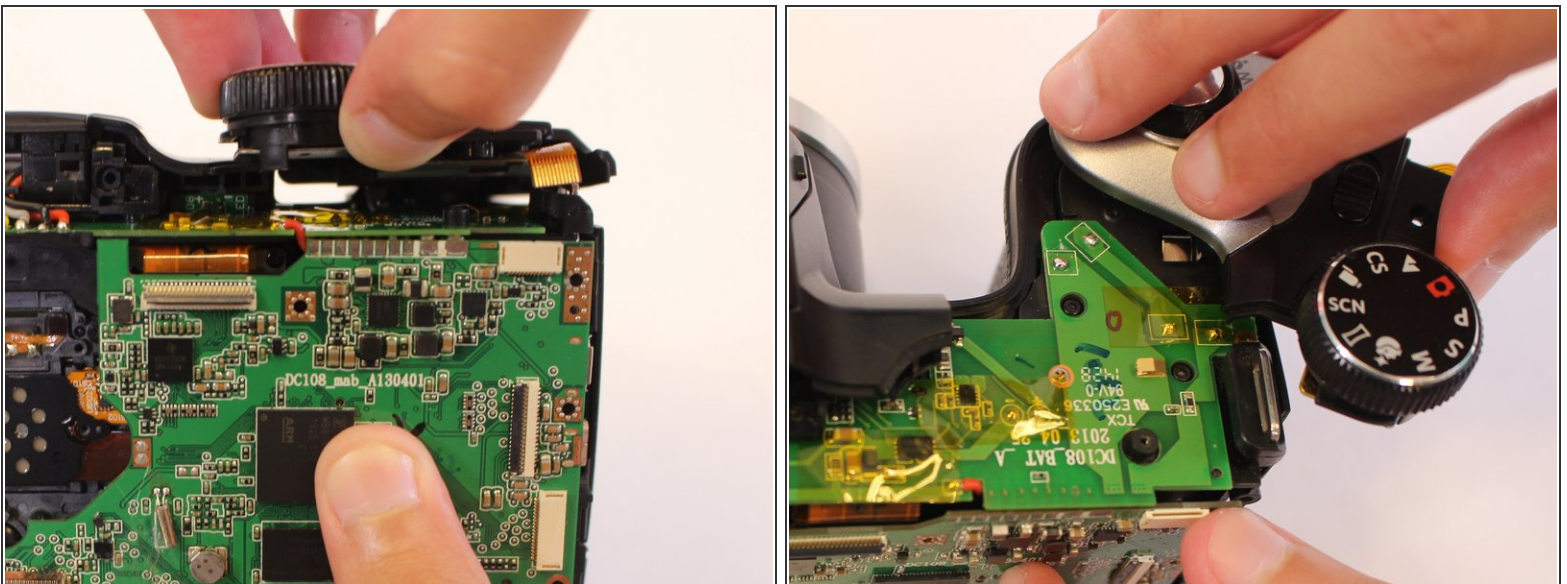


## Step 13



- Using tweezers, disconnect the orange cable connection at the top of the motherboard.

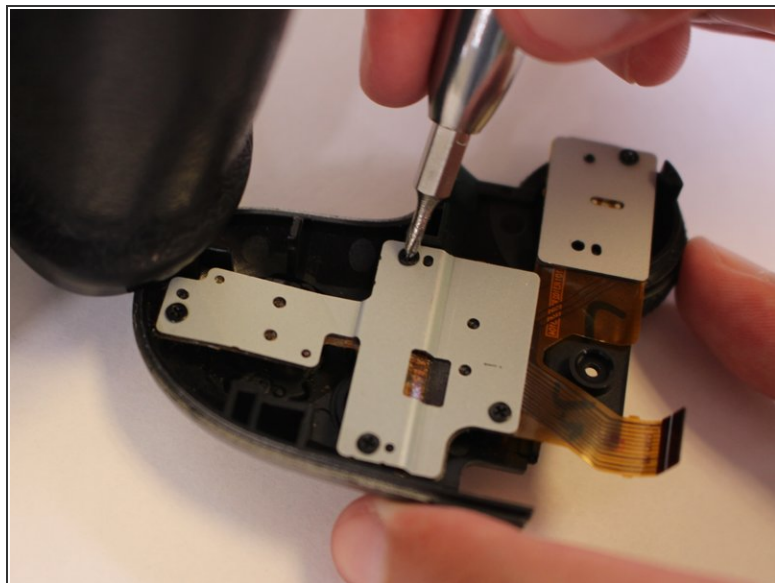
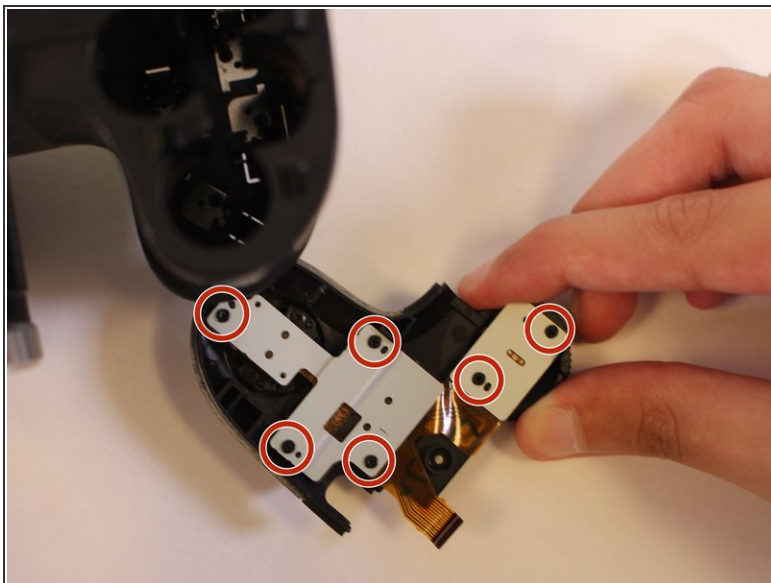
## Step 14



- Pull the mode dial up and off of the camera.

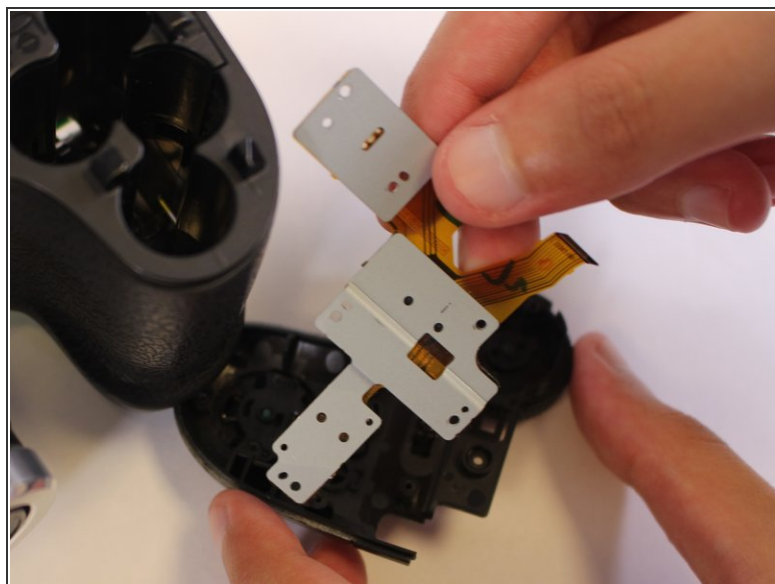
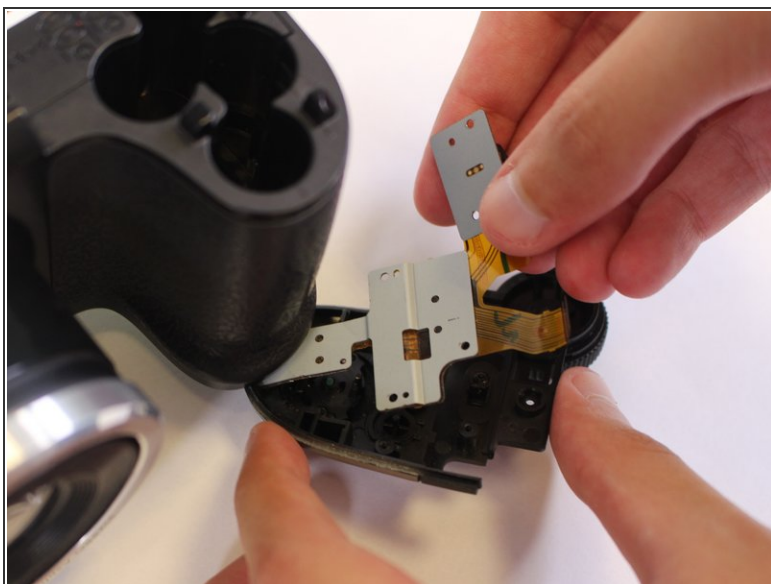
⚠ Rotate carefully to avoid breaking the screw attaching the top side cover to the main body of the camera.

## Step 15



- Turn camera upside down.
- Remove the six 2mm JIS #000 screws from the metal base of the shutter button.

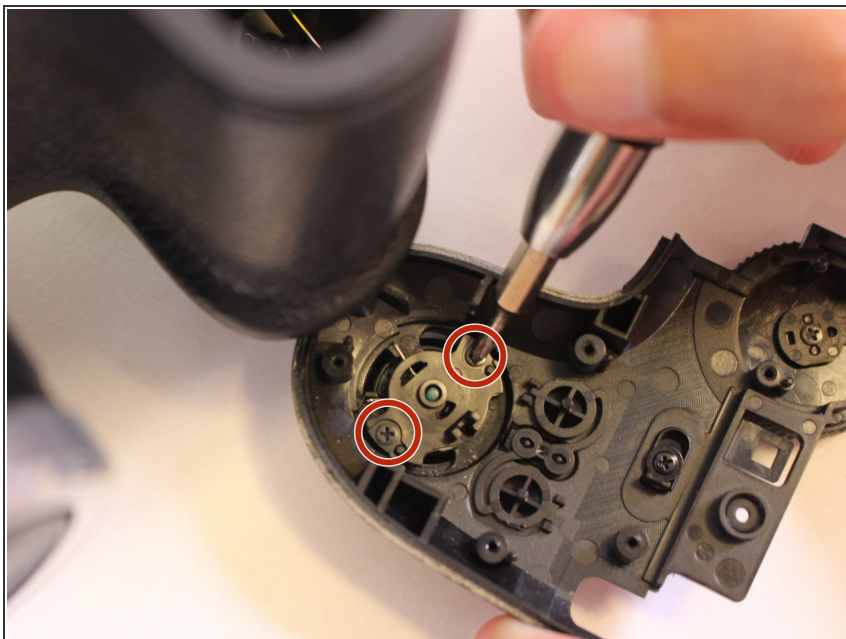
## Step 16



- Remove the metal base and ribbon cables.



## Step 17



- While holding the shutter button in place, remove the two 4mm JIS #000 screws from the base.

## Step 18



- Remove the plastic base of the shutter button using tweezers by pulling it straight upward.



## Step 19



- Remove the shutter button by pulling it out from the bottom side of the top cover.

To reassemble your device, follow these instructions in reverse order.