



# Repairing Quasar Microwave Door Handle

If you press the door handle down and the door doesn't open, read on!

Written By: Samuel






## TOOLS:

- [Phillips #1 Screwdriver](#) (1)
-

## Step 1 — Disassembling Quasar Microwave Outer Cover



 Disconnect the power supply cord from the outlet.

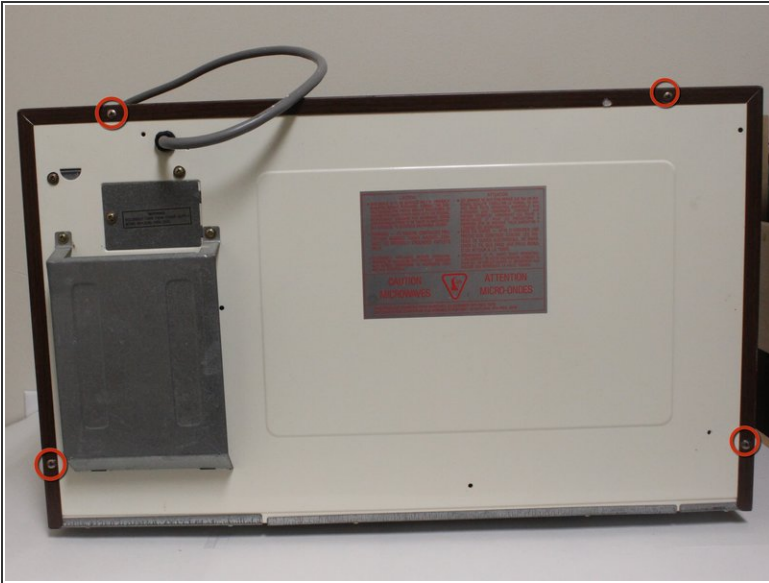
## Step 2



- Remove the eight screws holding the wood-patterned cover to the microwave frame.
- The first four screws are located on either side of the microwave front.



### Step 3



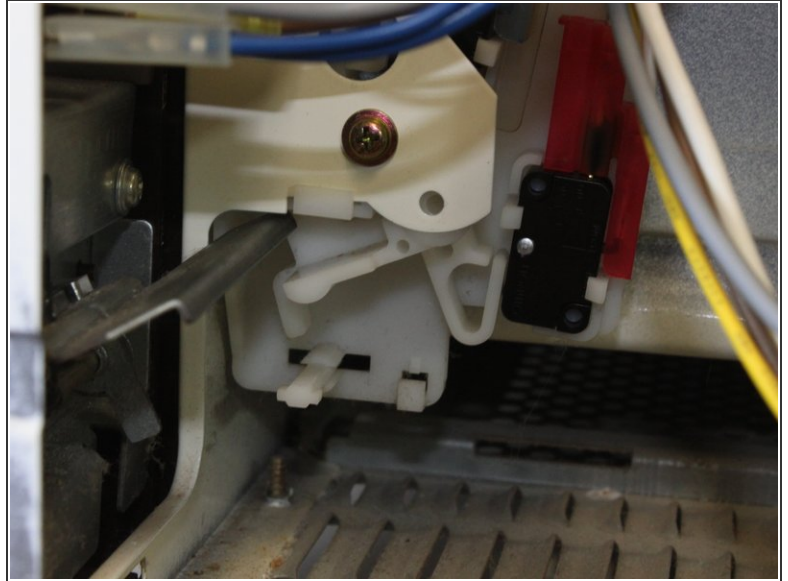
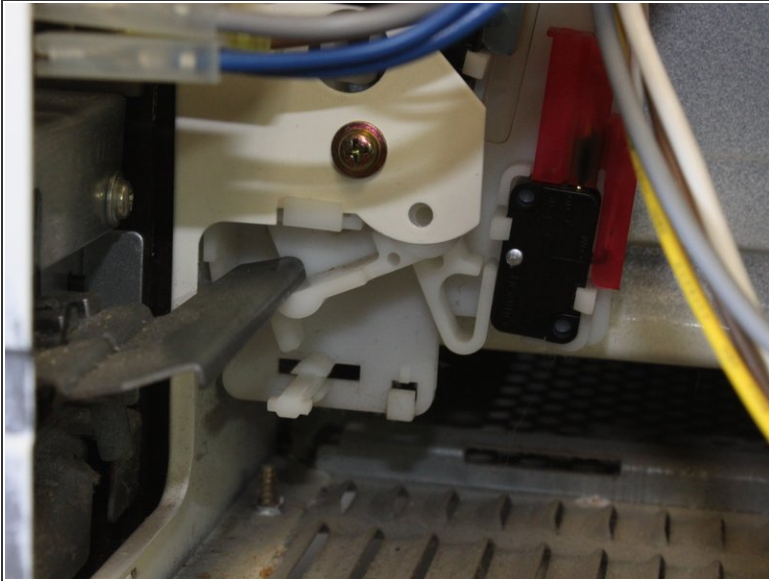
- Remove the additional four screws securing the wood-paneled case to the microwave frame.

### Step 4



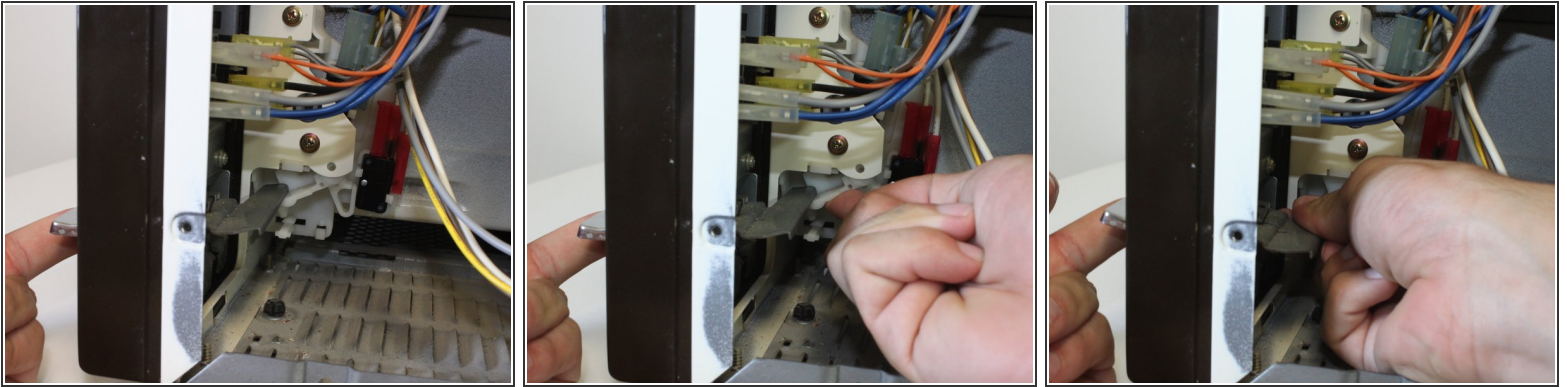
- Placing your hands on either side of the case, slide the case back gently until you feel it completely separate from the microwave frame.
- Lift the case upward slowly until the case is free of the microwave.

## Step 5 — Repairing Quasar Microwave Door Handle



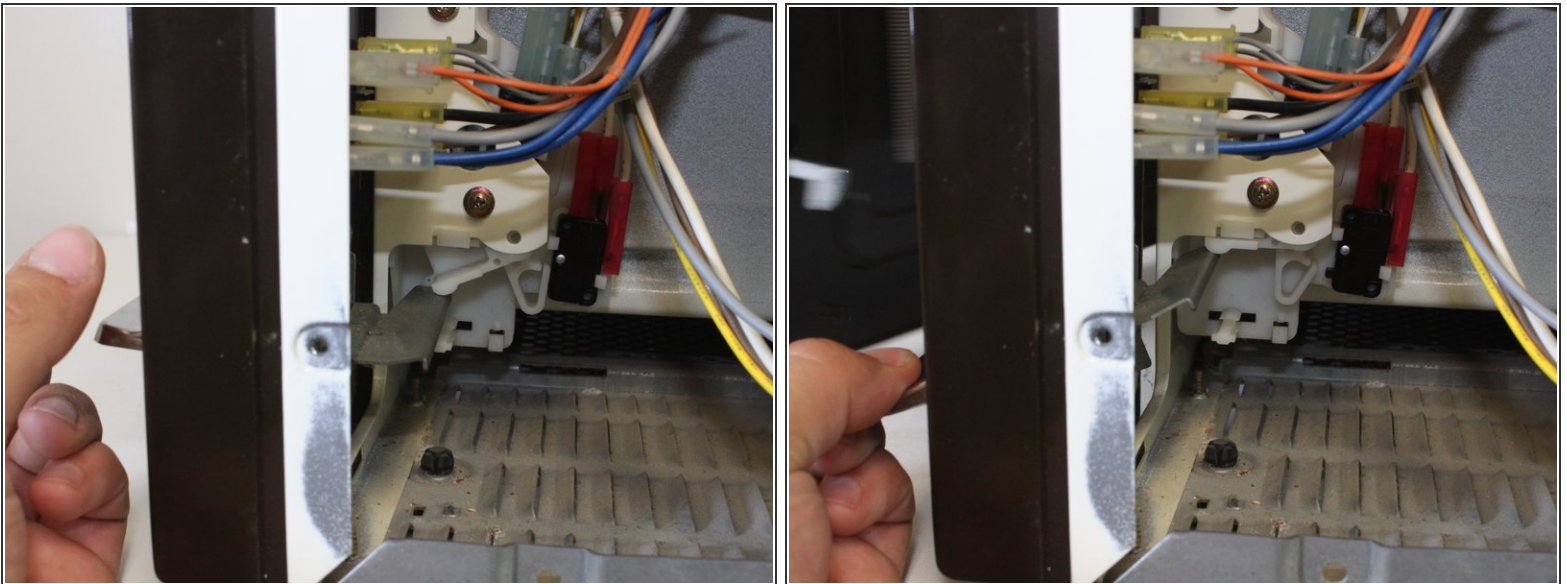
- Observe the lever mechanism found just behind the door handle, inside the microwave.
- ⓘ The plastic lever should be above the metal lever. If the metal lever is above the plastic lever, this is why the door will not open.
- ⓘ In this picture, the metal part is ABOVE the white plastic part. The white part needs to be lifted to open the door so when the door lever is pressed, the metal part rises, and the plastic part stays in place.

## Step 6



- Lift up on the outside lever.
- Push up on the white plastic piece.
- Push metal bar down, snapping the white plastic piece above it.

## Step 7



- This is how the fixed mechanism should look.
- Press the button and enjoy your newly fixed door!

To reassemble your device, follow these instructions in reverse order.

This document was generated on 2020-12-14 03:07:20 AM (MST).

