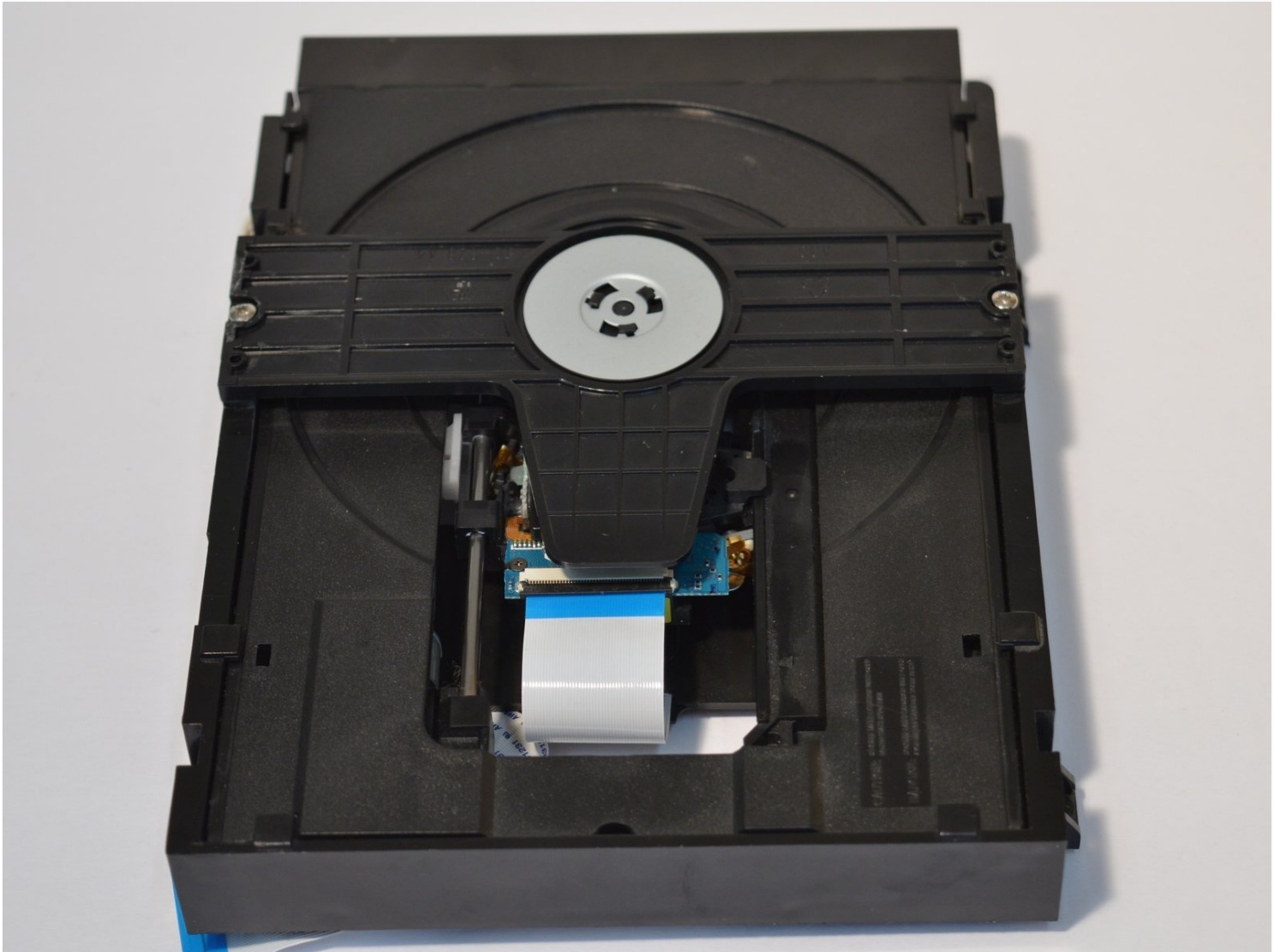




# Dynex DX-WBRDVD1 Optical Drive Replacement

The discdrive is found next to the motherboard...

Written By: Harrison Williams



# INTRODUCTION

The discdrive is found next to the motherboard and power board inside the device. This guide will take you through the steps of removing the discdrive for replacement.

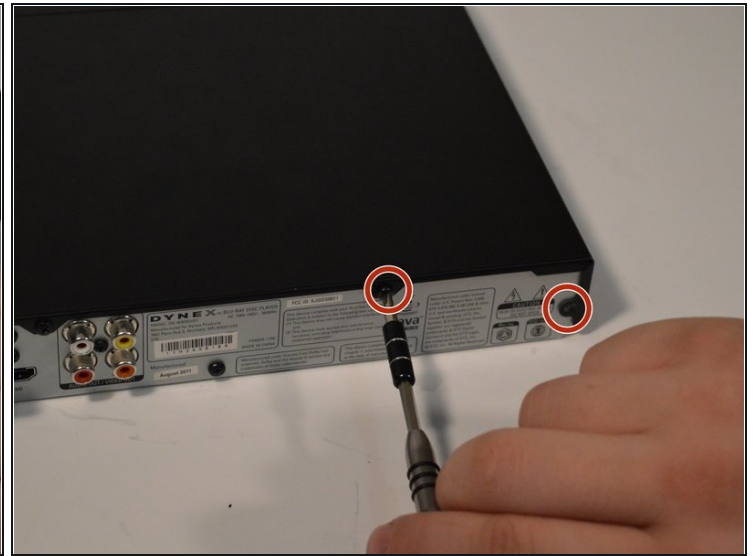
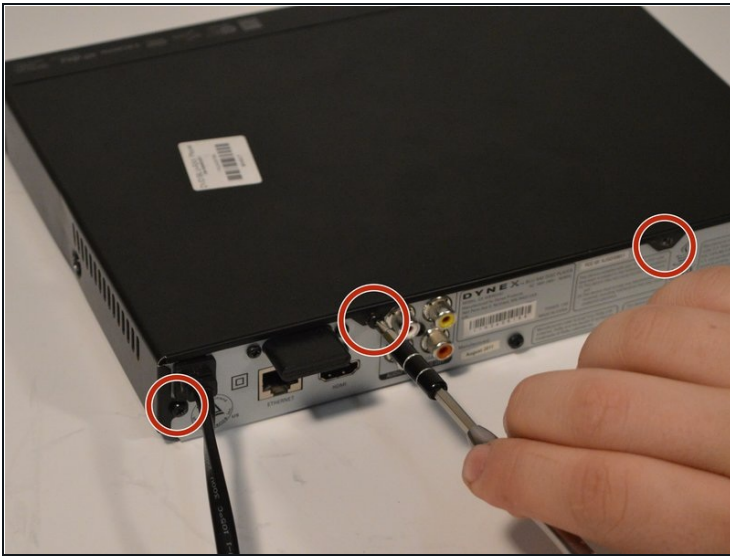
## TOOLS:

Phillips #1 Screwdriver (1)  
Spudger (1)

## PARTS:

Optical Disk Drive (1)

### Step 1 — Top Cover



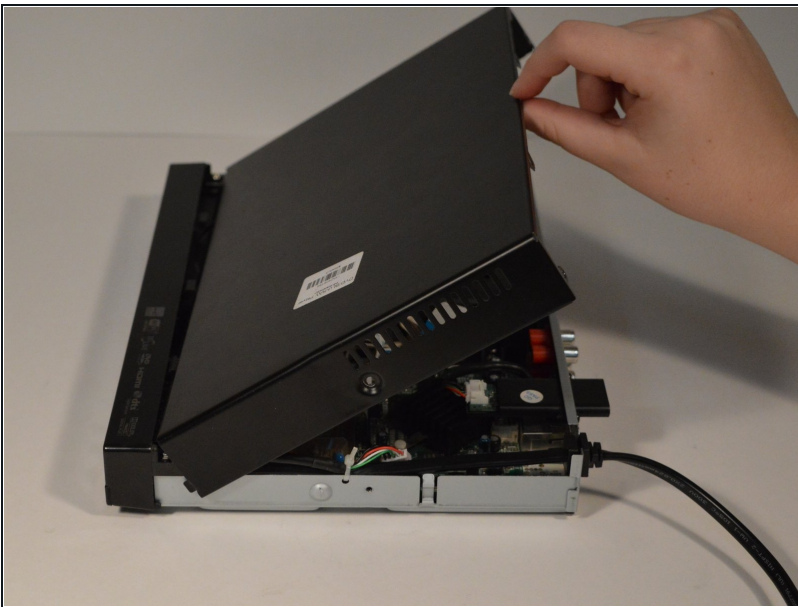
- Remove the four 5mm Phillips #1 screws that connect the black outer shell to the silver back of the device.

## Step 2



- Remove the two 5mm screws on the left and right side panels.
- ① There is one screw on each side that secures the cover to the body of the device.

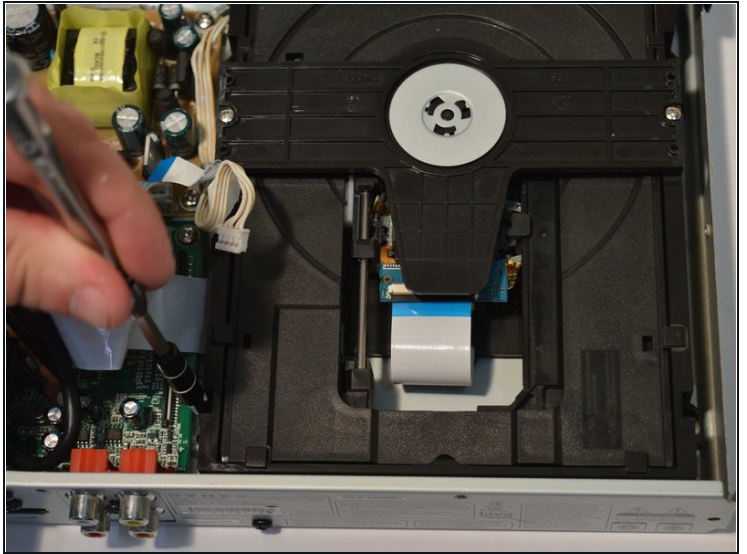
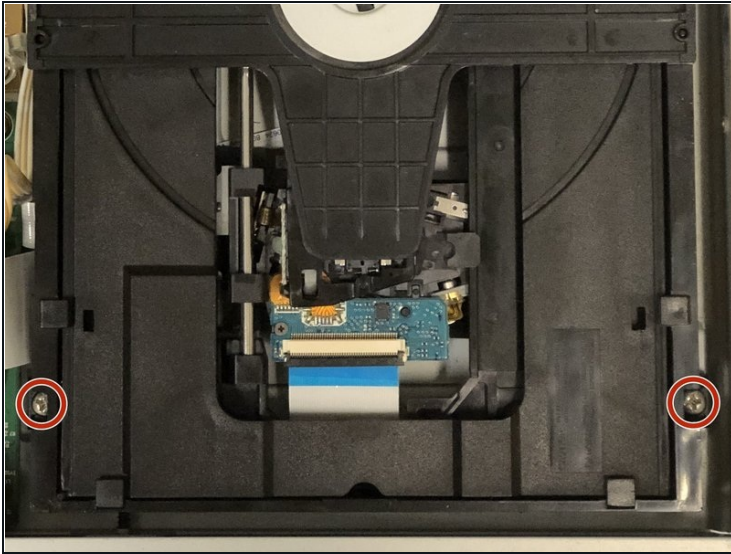
## Step 3



- Lift the black cover to a 45 degree angle from the rear of the device and pull the cover away entirely.
- ⚠ Check that the power cord is not preventing the device from opening or closing.

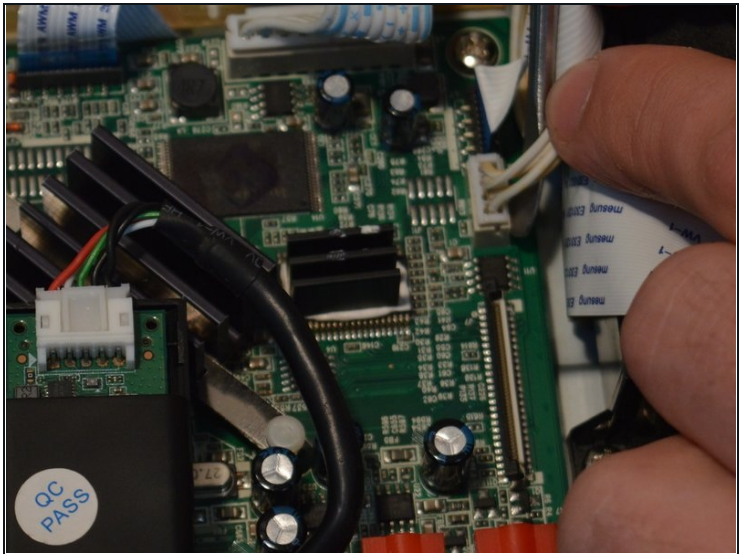
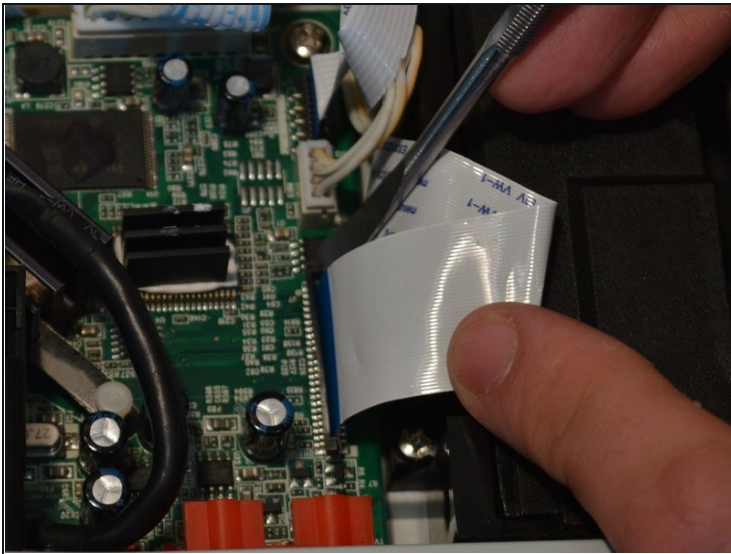


## Step 4 — Optical Drive



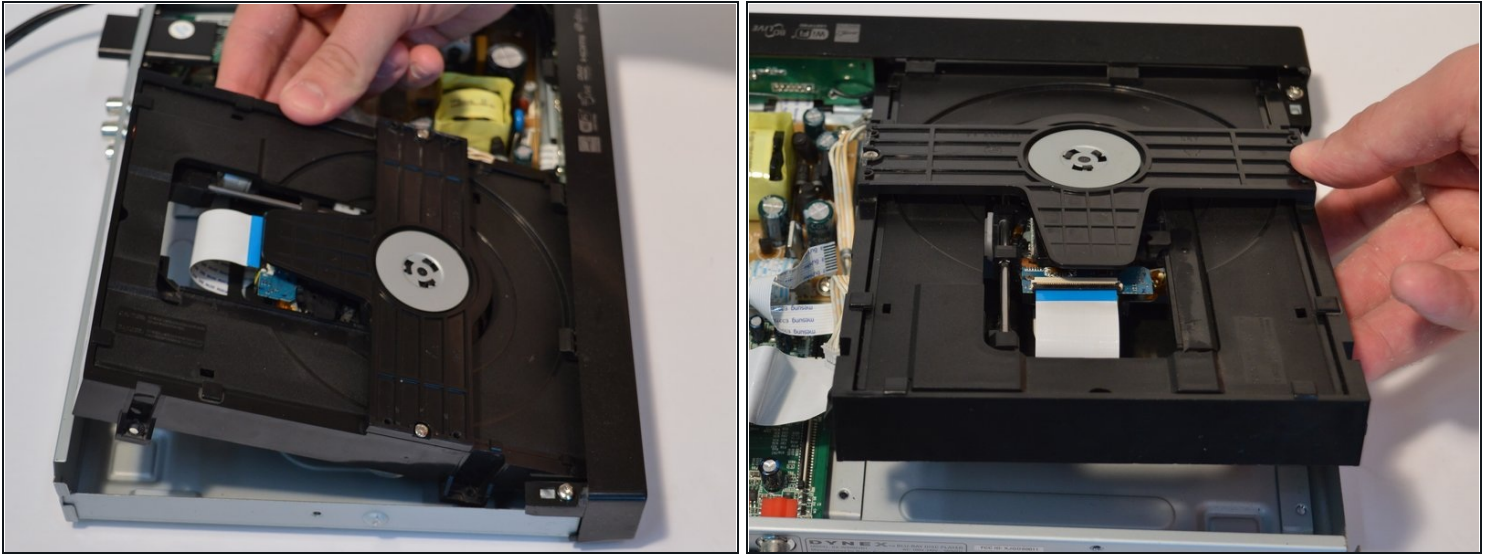
- Use a Phillips #1 screwdriver to remove the two screws that secure the Optical Drive.

## Step 5



- Detach the tape wires from the motherboard and power board.

## Step 6



- Lift the disc drive up to a 45 degree angle and pull back out of the device shell

---

To reassemble your device, follow these instructions in reverse order.