

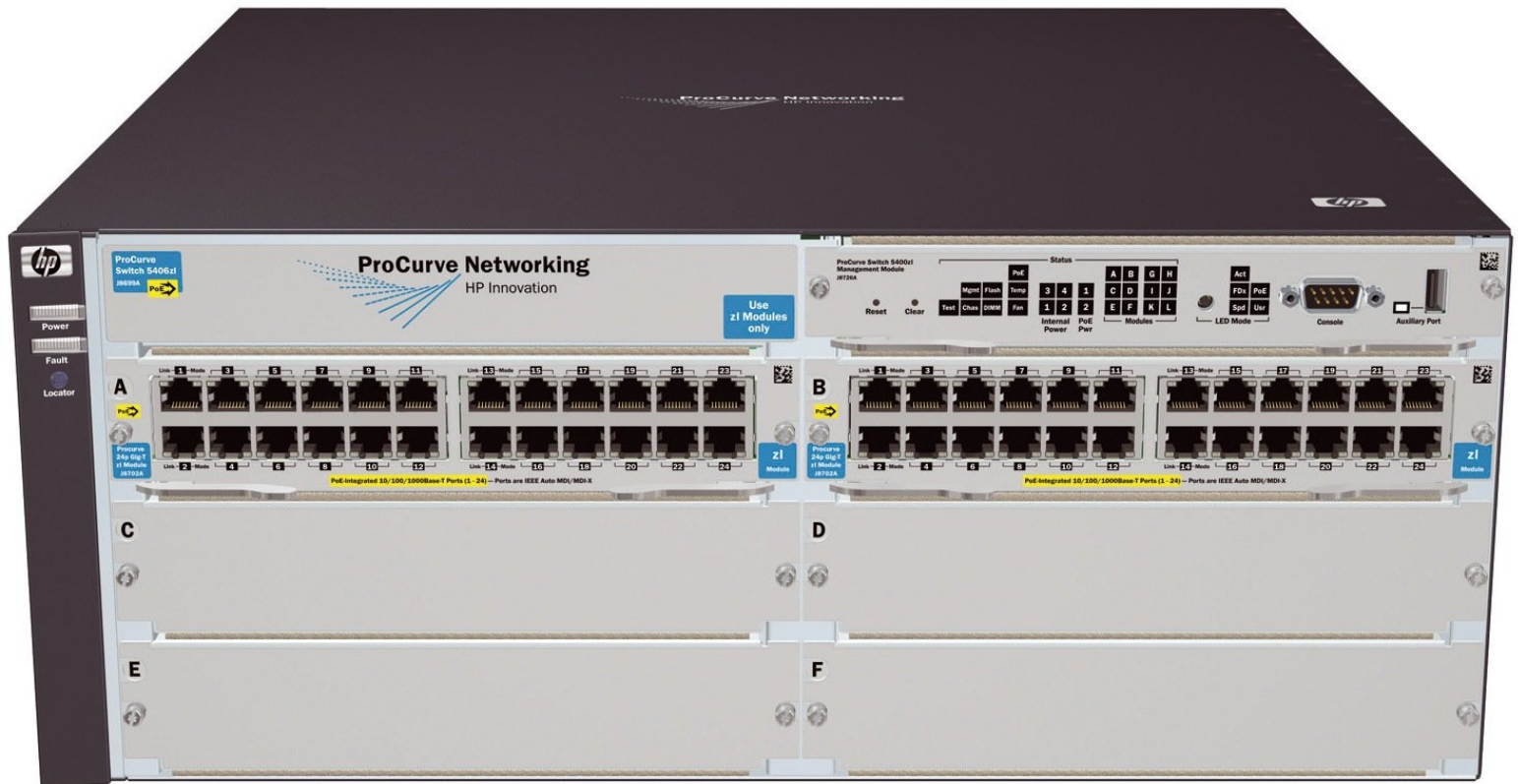


HP 5406 zl Switch Chassis (J8697A)

Replacement

Dismantling the modules of the HP 5406 zl switch; power sources, supervisor and expansion modules

Written By: Eneider Colina

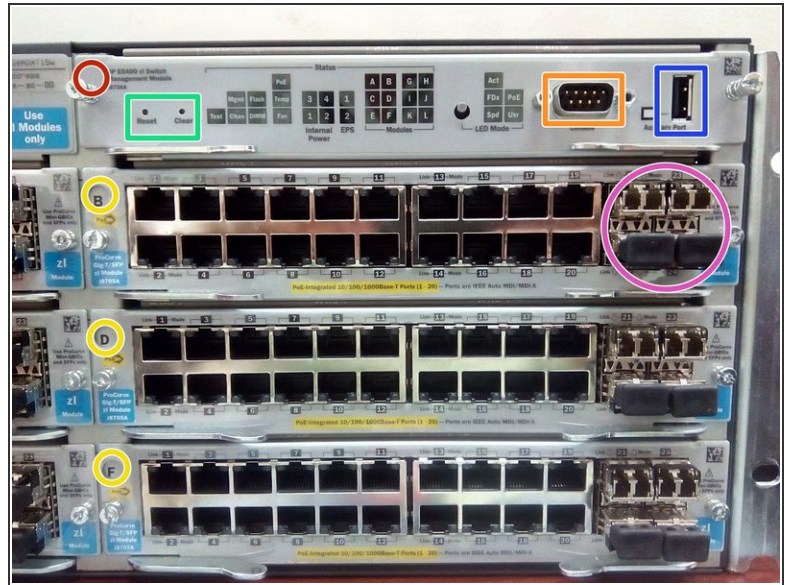
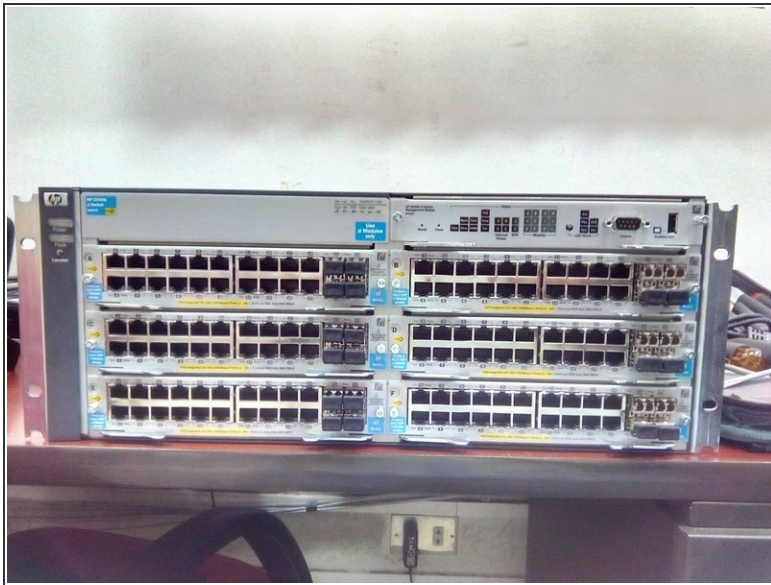




TOOLS:

- [Phillips #2 Screwdriver](#) (1)
-

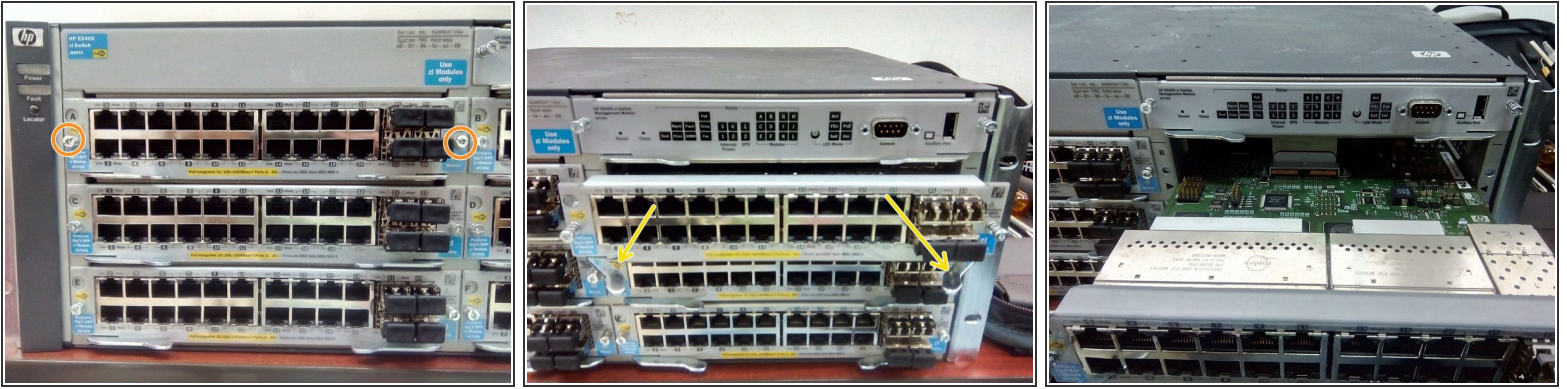
Step 1 — Identifying the modules



i The equipment comes with two modules to install a supervisor card and 6 expansion slots for compatible modules.

- **J8726A** Management Module.'
- **J8705A** Module 20p 10/100/1000 + 4p SFP.
- 'RESET' and 'CLEAR' buttons used for: 'CLEAR' Erase only the access passwords when pressed for at least 1 second. 'RESET' Restores factory default settings when pressed in a specific pattern.
- RS232 console port; any baud rate from 2400 to 115200 (the switch automatically detects the speed) 8 data bits, 1 stop bit, no parity and flow control set to None
- USB port
- **J4858C** - HP Gigabit-SX-LC Mini-GBIC

Step 2 — Removing the expansion modules



i The modules can be removed with the equipment turned on, with the exception of the 'Management Module'.

- Loosen the screws, the screw contains a spring and once it is loose it will be ejected and will remain in the equipment.
- To remove the module, pull the handles that are on the bottom of the module.

Step 3 — Removing the Management Module



! Do not remove while the equipment is on

- Following the same procedure above, loosen the screws and pull the levers of the module to remove it.
- RAM Memory
- Flash card

To reassemble your device, follow these instructions in reverse order.