



# TP-Link Archer C7 Teardown

Teardown of the TP-Link Archer C7 wireless router.

Written By: Lee Hunt



# INTRODUCTION

The TP-Link Archer C7 is an AC1750 dual-band gigabit wireless router.

As of 2021, there have been five hardware revisions, marked on the bottom label as “Ver X.0”.



## TOOLS:

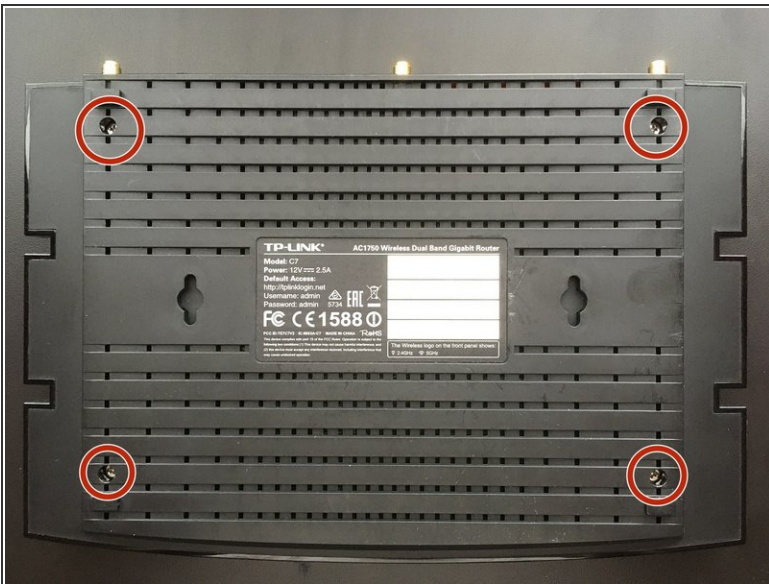
- [Phillips #0 Screwdriver](#) (1)
  - [ESD-safe pry tool](#) (1)
-

## Step 1 — Remove the antennas



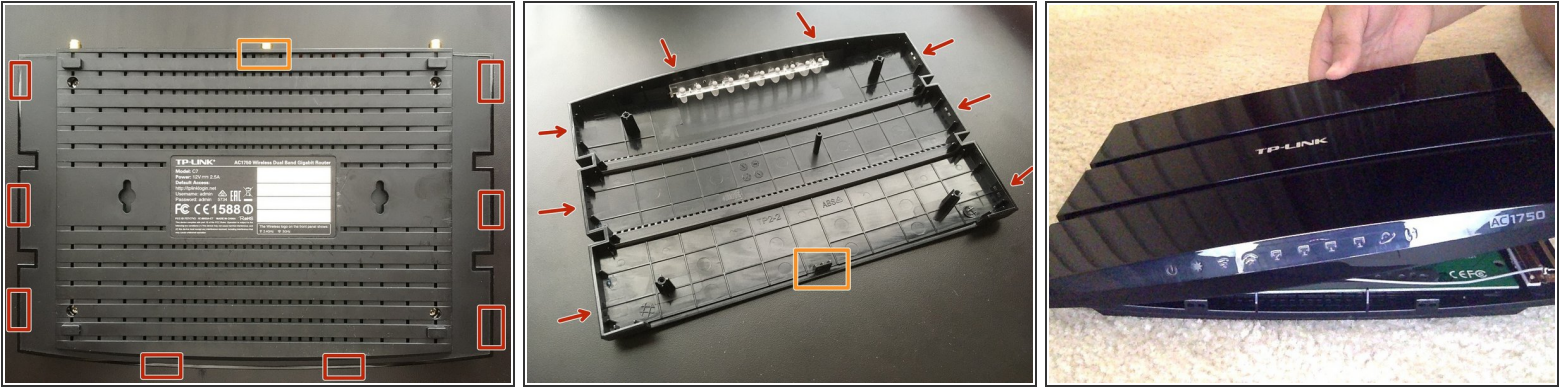
- Straighten each antenna by unfolding it at the hinge.
- Hold each antenna by the knurled (ribbed) base and unscrew it from the body of the router. Remove all three antennas.

## Step 2 — Remove the bottom screws



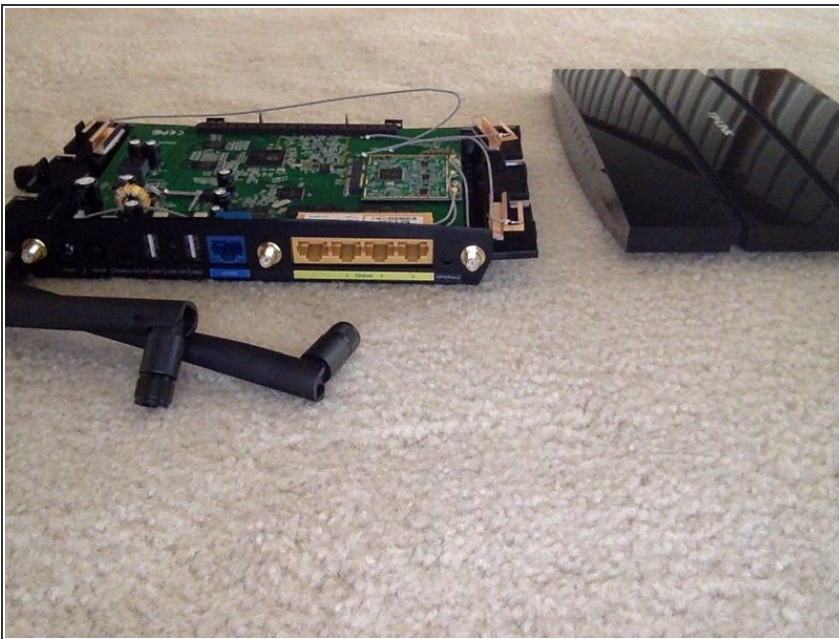
- Remove the 4 screws that secure the top cover of the router to the base.

### Step 3 — Removing the top cover



- Use a pry tool to pull the edge of the top cover outward from the base at each joint, until it unlatches. There are 9 joints in total.
- ❗ Hooks on the top cover latch into slotted tabs on the base. The joint at the back of the router is inverted from the rest: the hooks are on the base and the slotted tab is on the cover.
- Remove the top cover.

### Step 4 — Results



- The teardown is complete!
- ❗ When reassembling the router, ensure that all ports sit flush with the back of the base, and that all buttons and switches move freely. The snap-fit joint at the back of the router will not engage properly if the ports or controls are misaligned.