



# GPD WIN Silicon Pad Replacement

GPD WIN is a very good game console. However, I...

Written By: [noria901](#)



## INTRODUCTION

GPD WIN is a very good game console.

However, I was so absorbed in it that the controller got messed up.

At this rate, you will not be able to perform any tricks or reload!

Replace the silicone pad immediately

### TOOLS:

[iFixit Opening Picks \(Set of 6\)](#) (1)

[54 Bit Driver Kit](#) (1)

### PARTS:

[シリコンパッド](#) (1)

GPDWINの交換パーツはTaobaoのGPD Shopからのみ入手可能です。<https://shop115985484.taobao.com/> 購入体験はTwitterを参照してください  
<https://twitter.com/noria901/status/1009429169510363136>

## Step 1 — Remove the screw of the case



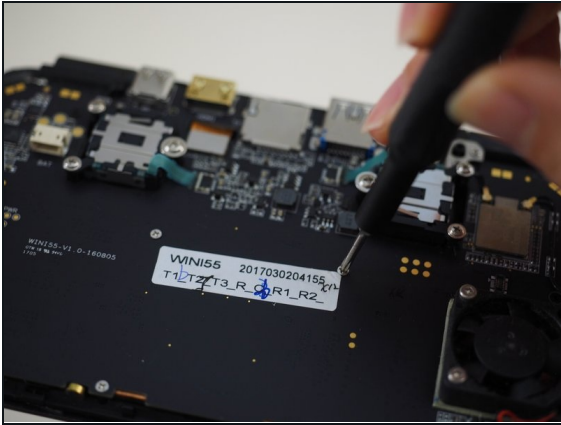
- Remove the case screws

## Step 2 — Remove case



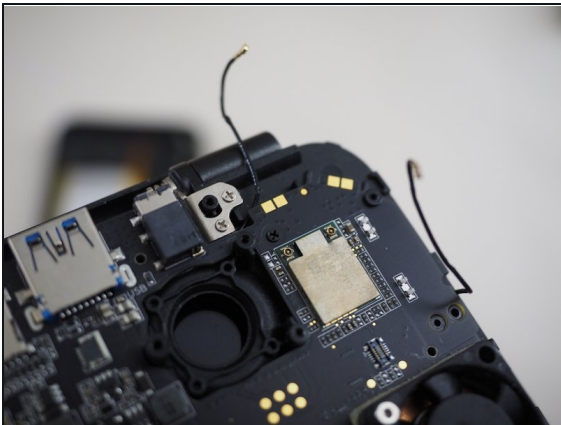
- There is a small space beside the keyboard, insert the pick and remove the claw
  - As you open the device, you can see that the flexible cable and the battery cable are connected. Then unplug the connector.

### Step 3 — Remove screws on the logic board



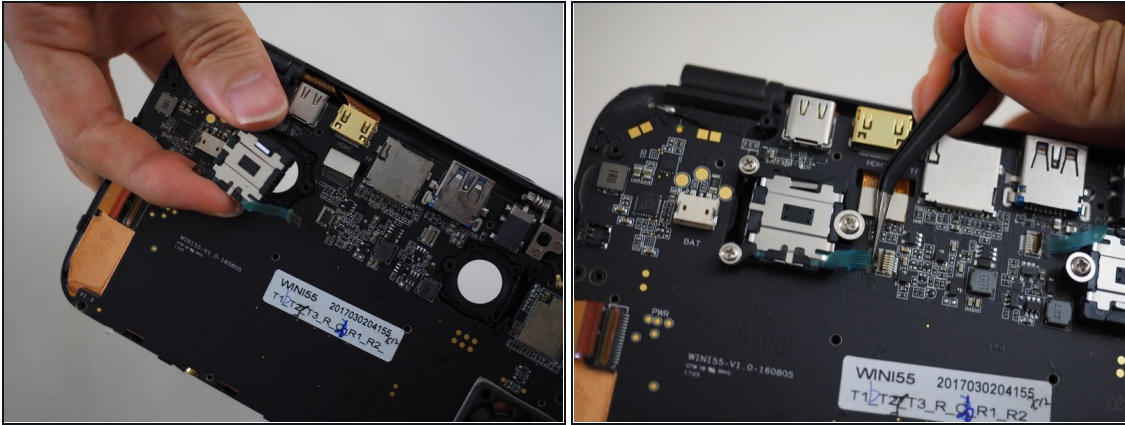
- Remove screws on the logic board.
- Because some black threads are mixed, do not forget to remove

### Step 4 — Remove the wifi connector on the logic board



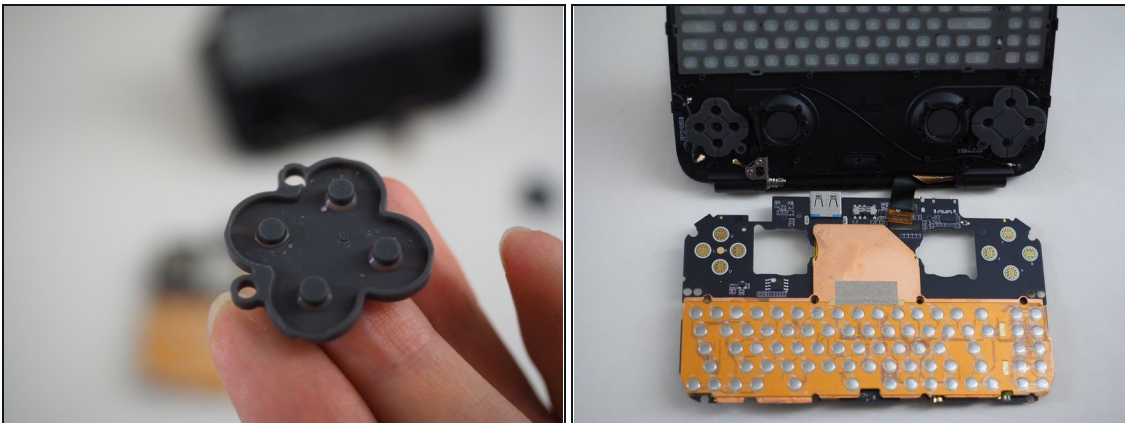
- Remove Wi-Fi antenna cable and LCD connector

### Step 5 — Remove the joystick



- Remove the screws of the joystick and remove the flex cable from the connector.
- Then, it is ready to pull logic board out of the case.

### Step 6 — Replace the silicone pad



- You can access the silicone pad by removing the logic board.
- Replace a sticky silicon pad

---

To reassemble your device, please follow these steps in reverse order.