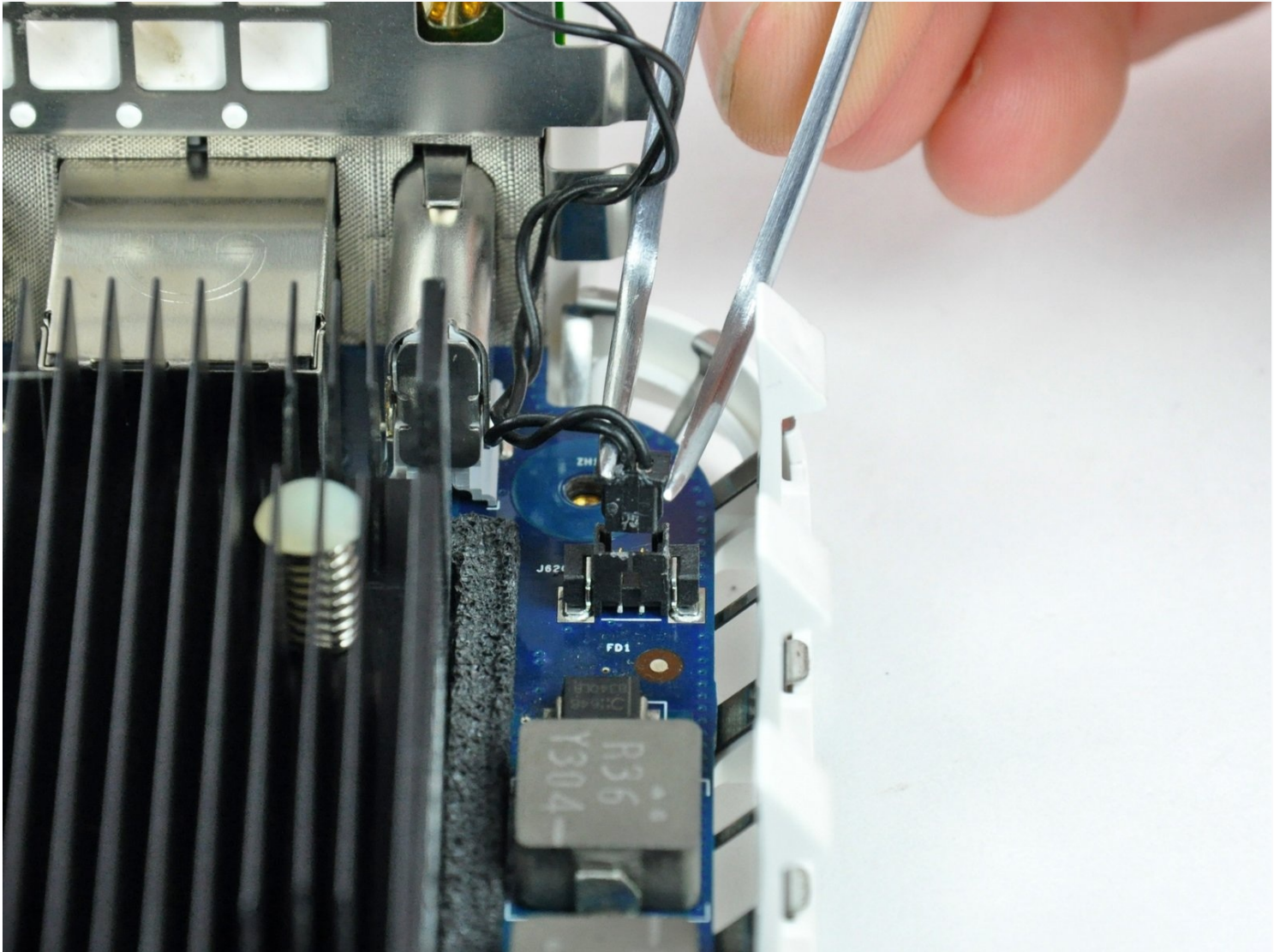




Mac mini Model A1176 Logic Board Replacement

Remove the logic board assembly from your mini.

Written By: Walter Galan



INTRODUCTION

Remove the logic board assembly from your mini.

TOOLS:

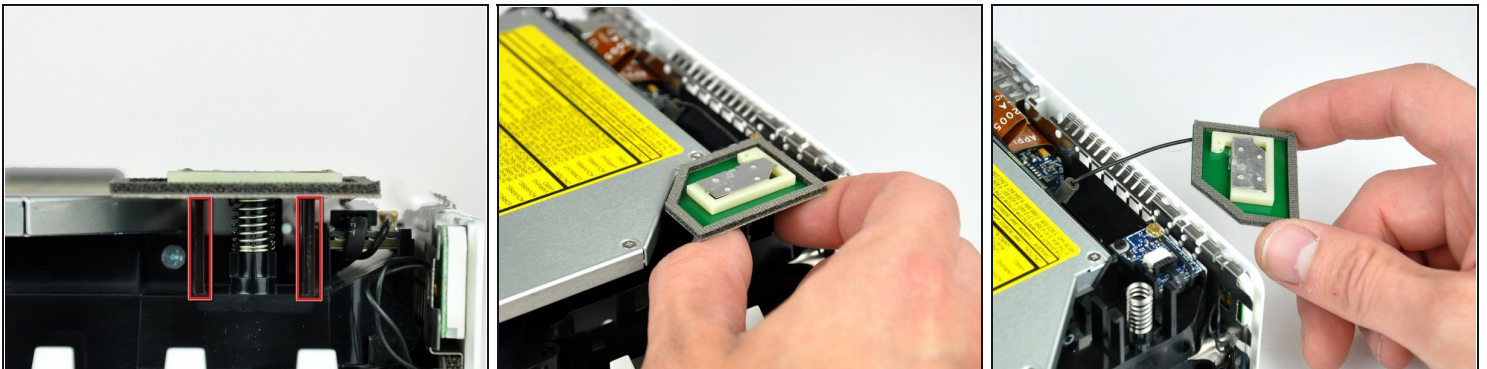
1.5" Thin Putty Knife (1)





Phillips #00 Screwdriver (1)

Spudger (1)

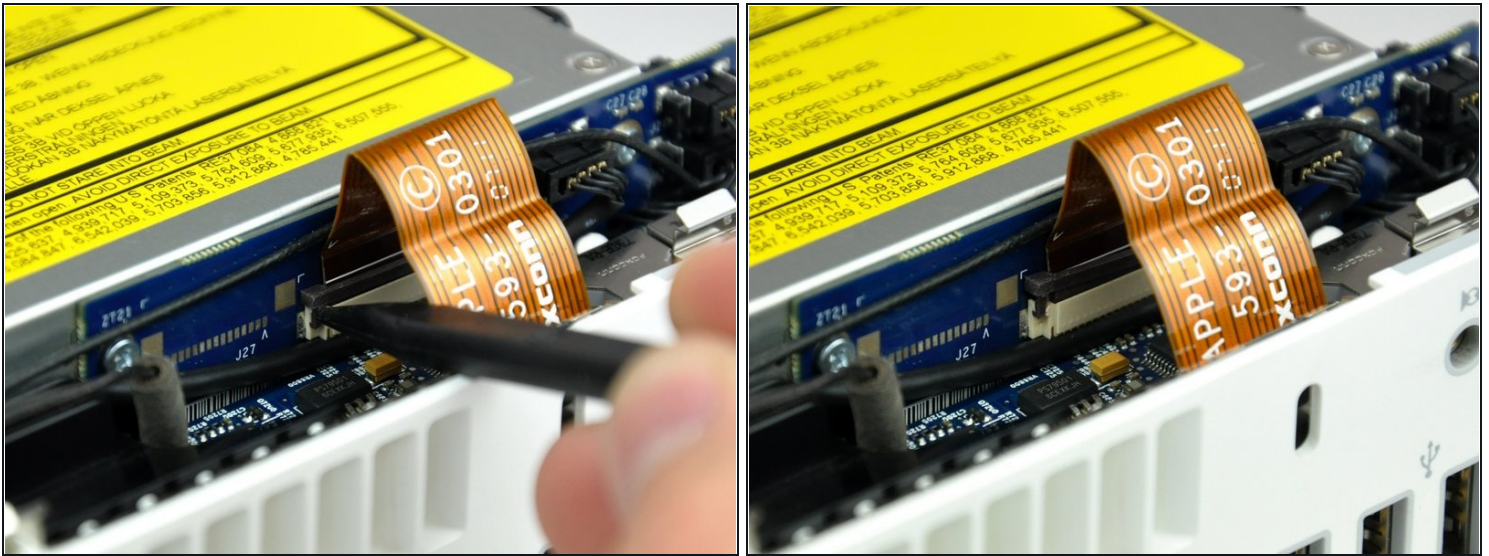
Tweezers (1)

Step 1 — Internal Frame



-  Later in this guide you will remove several recessed Phillips screws. Bit drivers are generally too large to fit in the recesses, so be sure to have a thin shafted Phillips screwdriver on hand.
-  First remove the AirPort antenna (the larger of the two), located near the power button.
 - Slightly squeeze the two retaining arms toward each other and lift the AirPort antenna off its post.
-  Squeezing the two posts excessively will surely break them off the internal frame. Work delicately.
-  During reinstallation, you will have to slightly squeeze the two posts together so they fit into the openings on the AirPort antenna board.

Step 2



- Use the tip of a spudger to slightly lift the left side of the ZIF cable lock up from its socket.

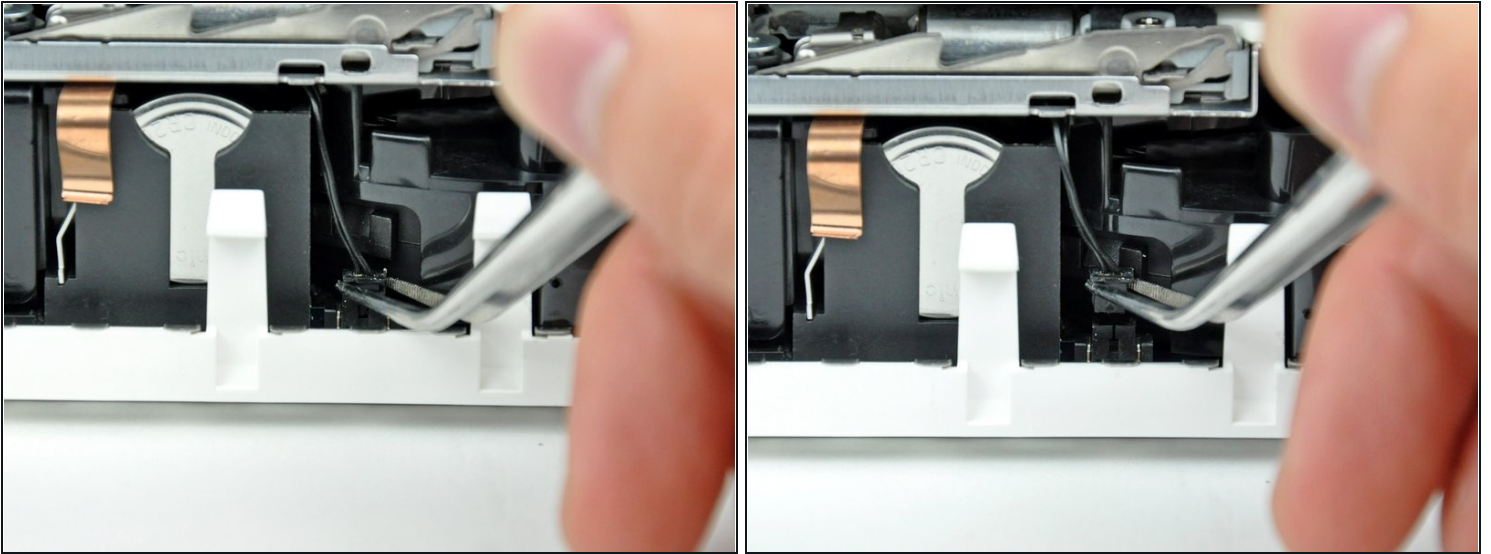
⚠ The ZIF cable lock will lift about 1 mm and stop. **Do not** try to completely remove the ZIF cable lock.

Step 3



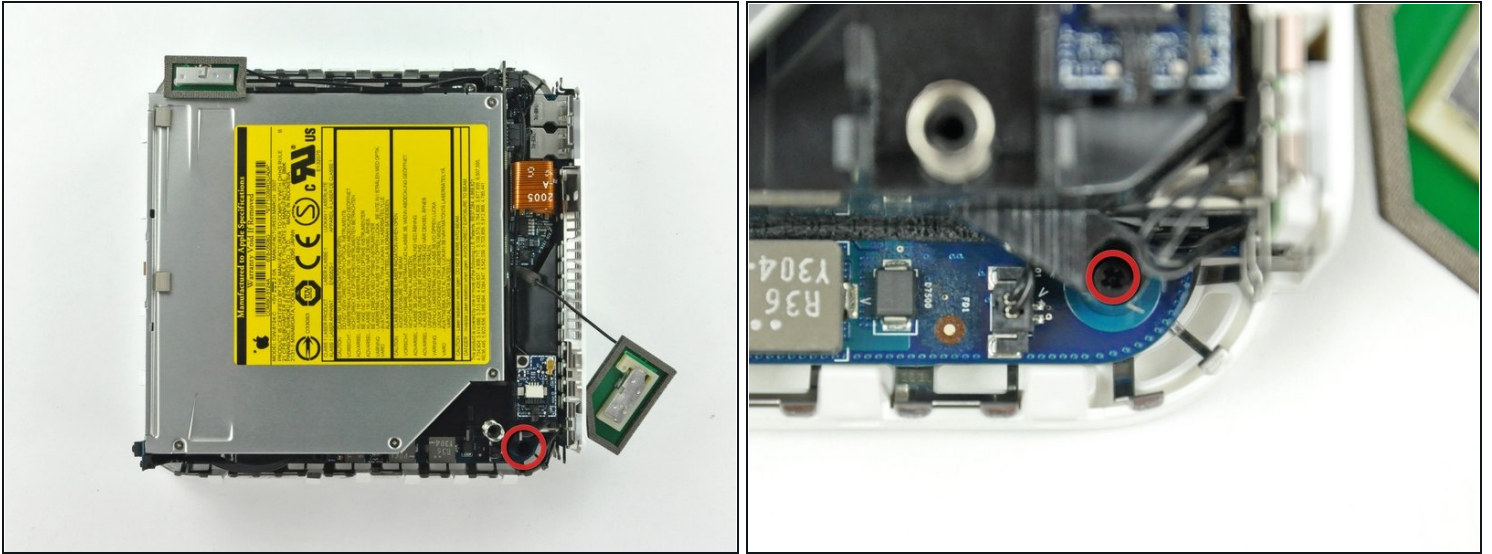
- Lift the audio board ribbon cable up out of its socket.
- ⓘ If it refuses to lift from its socket, the ZIF cable lock is not fully released. Make sure it is evenly lifted about 1 mm from the socket on the interconnect board.

Step 4



- ① Rotate the mini so that the SuperDrive slot loading mechanism is facing you.
- Use a pair of [tweezers](#) to lift the hard drive thermal sensor cable connector up off its socket on the logic board.
- ⚠ Use tweezers to grab the connector (as seen in the picture), **not the wires**.
- ① The connector is located under the optical drive opening, next to the PRAM battery.

Step 5



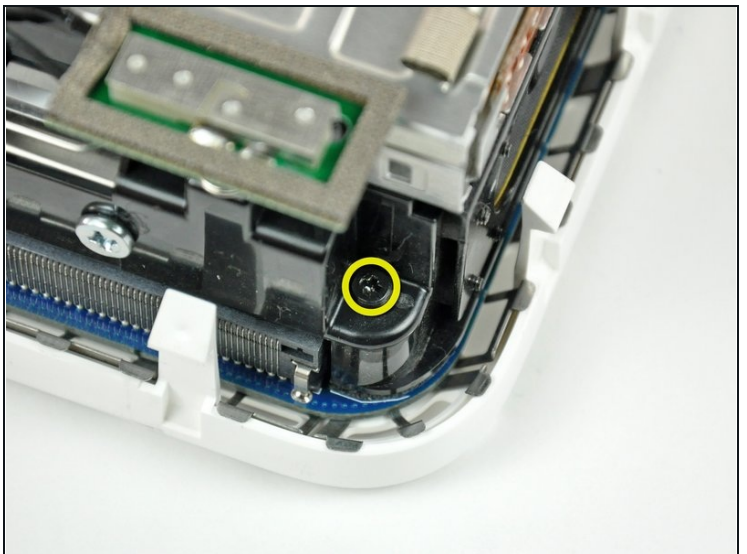
- ① In the next few steps, you will remove the four Phillips screws securing the internal frame to the bottom case. Included in each step is an overview picture showing the general location and a closeup showing the actual screw.
- Remove the recessed Phillips screw near the power button securing the internal frame to the bottom housing.

Step 6



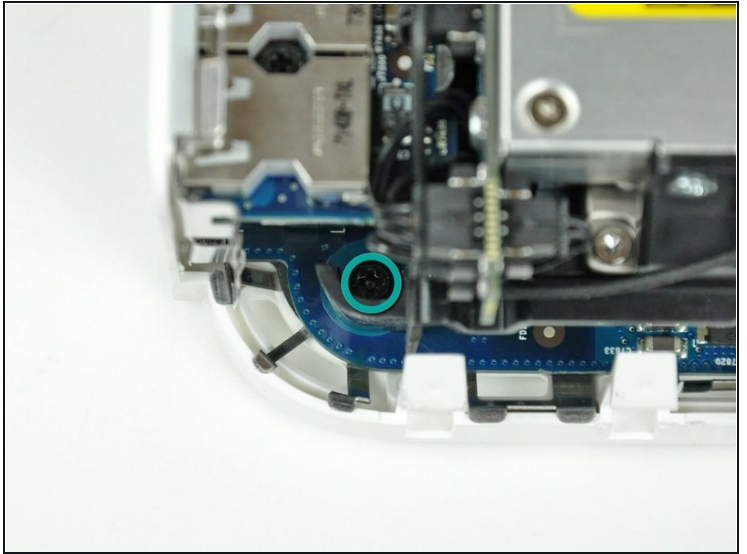
- Remove the recessed Phillips screw near the sleep light securing the internal frame to the bottom housing.
- ⓘ This screw is the longest of the four screws securing the internal frame to the bottom case.

Step 7



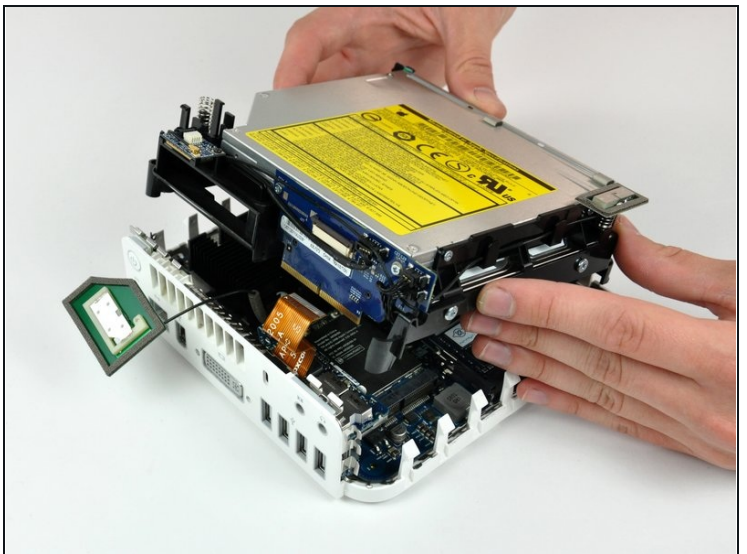
- Remove the Phillips screw from the internal frame near the Bluetooth antenna.

Step 8



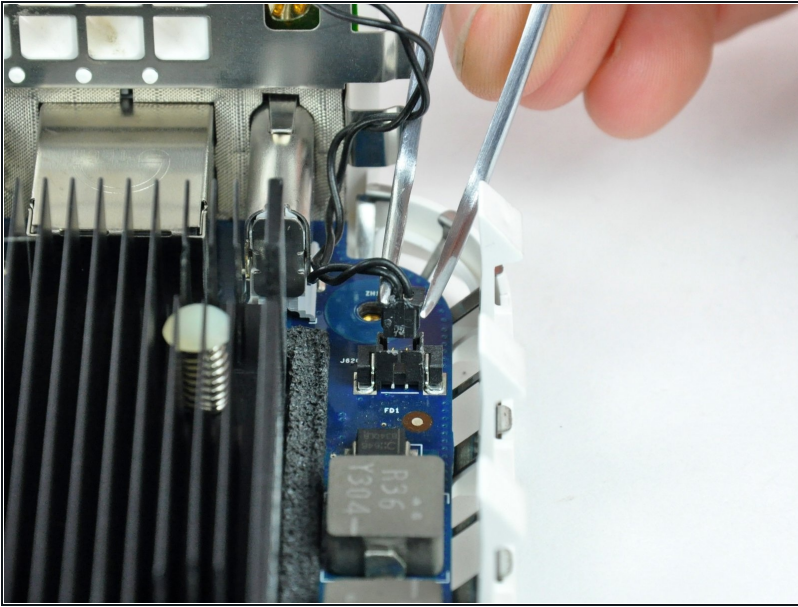
- Remove the Phillips screw near the audio ports securing the internal frame to the bottom case.

Step 9



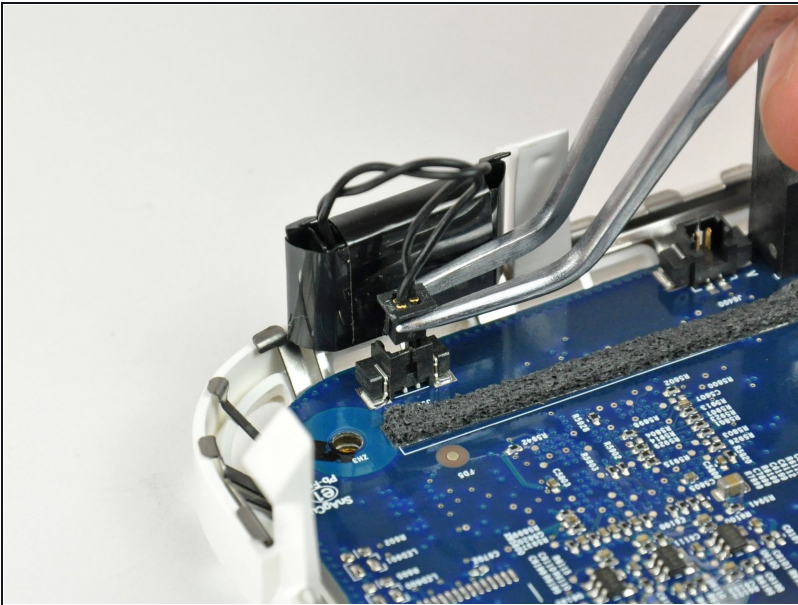
- Gently lift the internal frame up from the bottom housing, minding the AirPort antenna and any other cables that may get caught.
- ① It may be necessary to pull up near the interconnect board to separate it from the logic board.

Step 10 — Logic Board



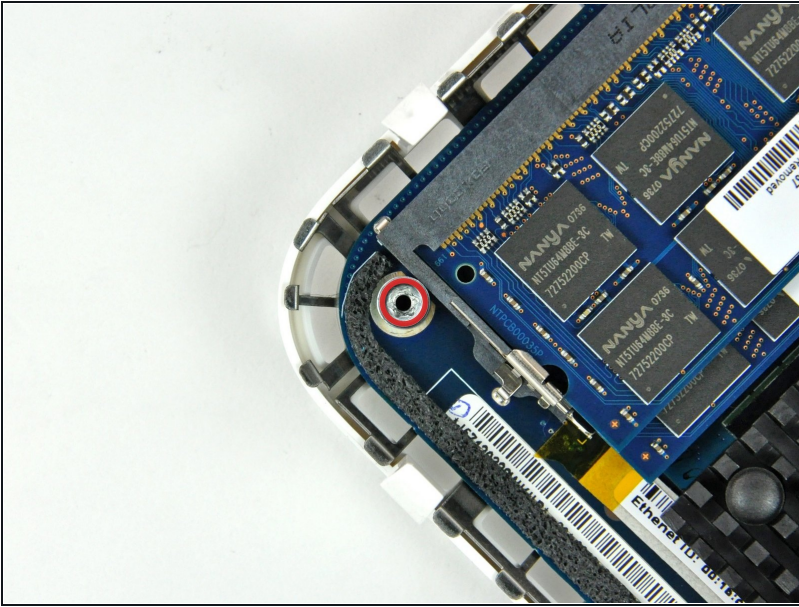
- Firmly grasp the power button cable connector with a pair of [tweezers](#) and lift it straight up off the logic board.

Step 11



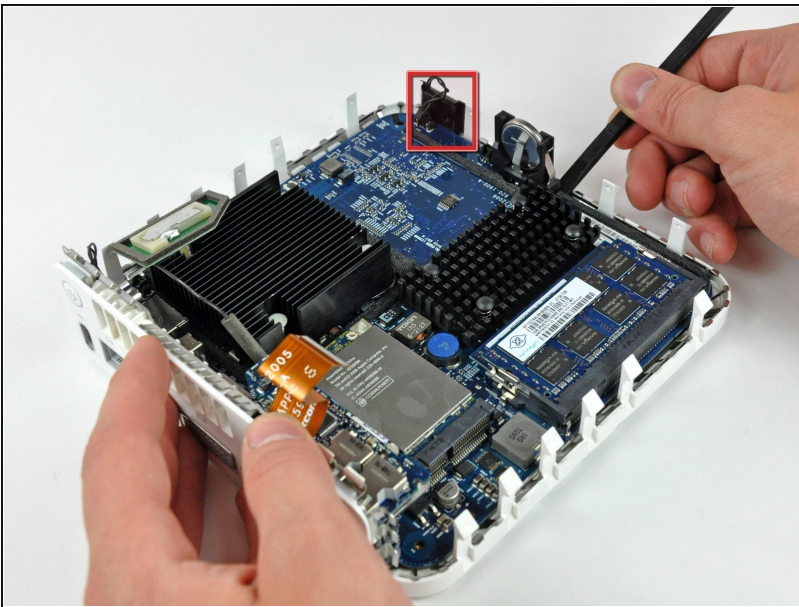
- Firmly grasp the sleep light cable connector with a pair of tweezers and lift it straight up off the logic board.

Step 12



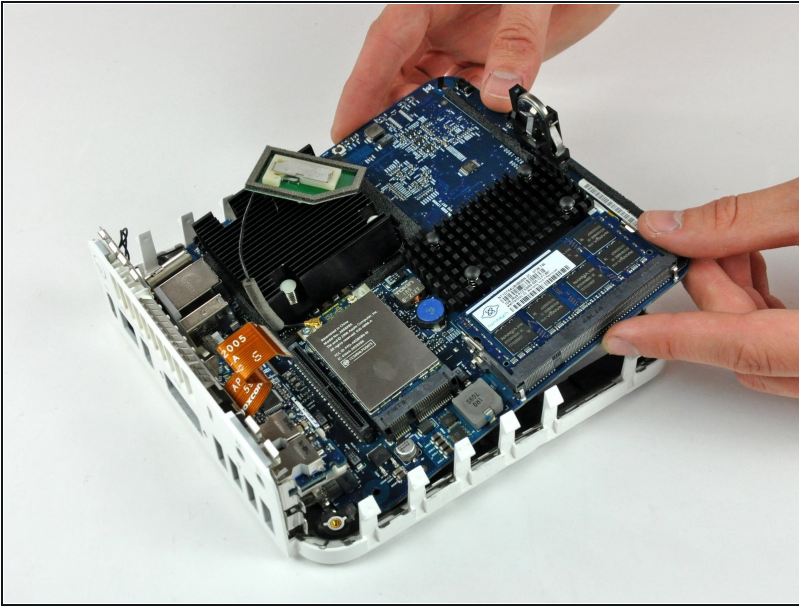
- Remove the single T10 torx lug securing the logic board to the bottom housing.

Step 13



- Use the flat end of a spudger to slightly lift the logic board near the PRAM battery to separate it from the bottom housing.
- ① It will be necessary to gently pull the sleep light (shown in red) away from the mini to clear the edge of the logic board.

Step 14



- Gently lift the free end of the logic board and wiggle the board as you pull it away from the I/O ports.

To reassemble your device, follow these instructions in reverse order.