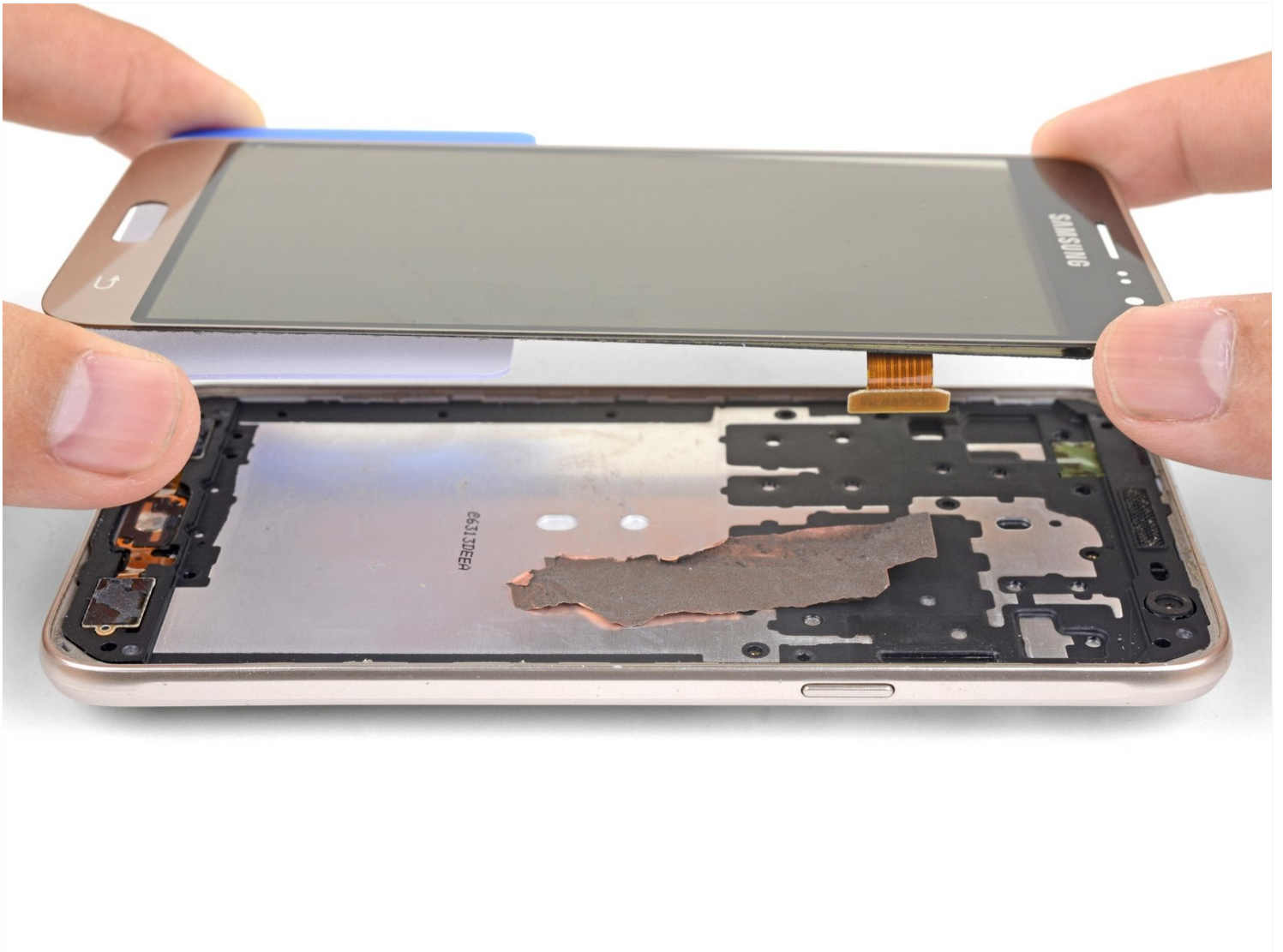




Samsung Galaxy J3 (2016) Screen Replacement

Follow this guide to remove and replace the...

Written By: Arthur Shi



INTRODUCTION

Follow this guide to remove and replace the screen on your Samsung Galaxy J3. This includes the front glass, digitizer, and AMOLED panel.

Be sure to power off your phone before following this guide.

This procedure destructively removes the screen. Do not follow this guide to replace the phone internals.

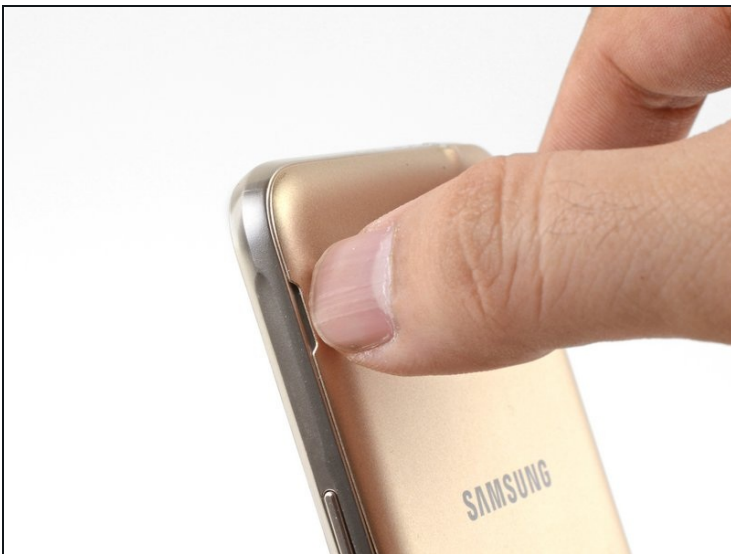
TOOLS:

[Spudger](#) (1)
[iFixit Opening Tool](#) (1)
[iOpener](#) (1)
[iFixit Opening Picks \(Set of 6\)](#) (1)
[Plastic Cards](#) (1)
[Tweezers](#) (1)

PARTS:

[Galaxy J3 \(2016\) Screen](#) (1)

Step 1 — Rear Cover



- Insert a fingernail or the flat end of a spudger into the divot to the left of the rear-facing camera.
- Gently pry the rear cover away from the phone until all the plastic clips holding the cover are released.

Step 2



- Remove the rear cover.
- ☑ To reinstall the rear cover, align it to the back of the phone, and squeeze the perimeter of the phone to snap all the clips into place.

Step 3 — Battery



- Insert a fingernail or the flat end of a spudger into the divot below the battery pack.
- Pry the battery pack out of its recess.
 - ⓘ If you use the spudger, do not push too hard or you will puncture the battery pack.
- Remove the battery pack.

Step 4 — Screen



- Insert the edge of an opening tool into the divot on the display connector cover. The cover is located on the left edge above the battery recess.
- Pry the display connector cover out of its recess.
- Remove the display connector cover.

Step 5



- Insert the flat end of a spudger underneath the display connector.
 - Pry up to disconnect the display connector.
- ✦ To re-attach [press connectors](#) like this one, carefully align and press down on one side until it clicks into place, then repeat on the other side. Do not press down on the middle. If the connector is misaligned, the pins can bend, causing permanent damage.

Step 6



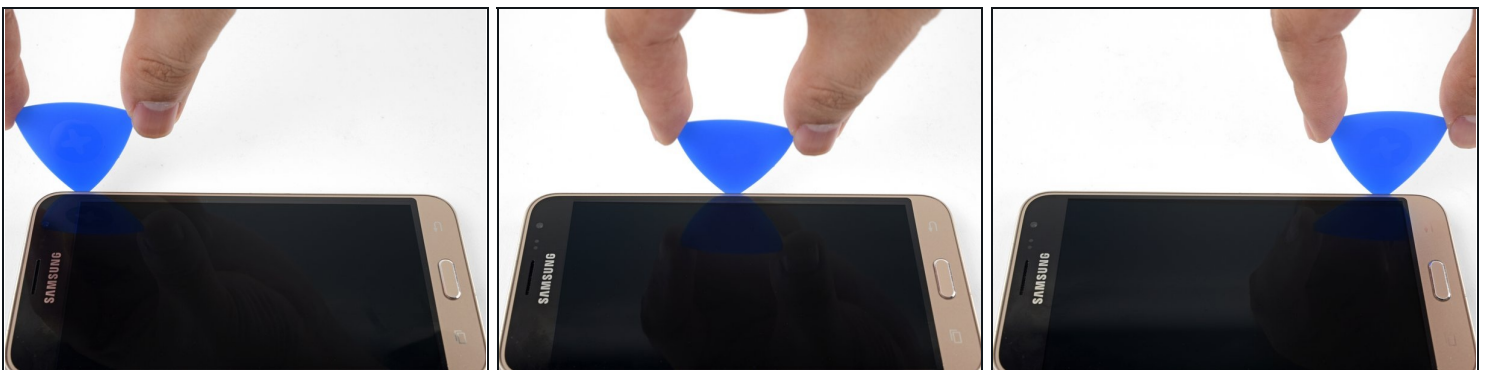
- Flip the phone over.
- [Heat an iOpener](#) and apply it to the right edge of the phone for a minute.
- ⓘ The next five steps show how to loosen the phone's top glass panel in order to access the AMOLED panel. Before slicing, note the following areas:
 - Thin adhesive bordering the display panel
 - Thick adhesive holding the top and bottom bezels
 - The digitizer cable, which will hinder slicing if hit

Step 7



- Firmly press an opening pick into the right edge seam of the phone, until the point slides in between the frame and the display glass.

Step 8



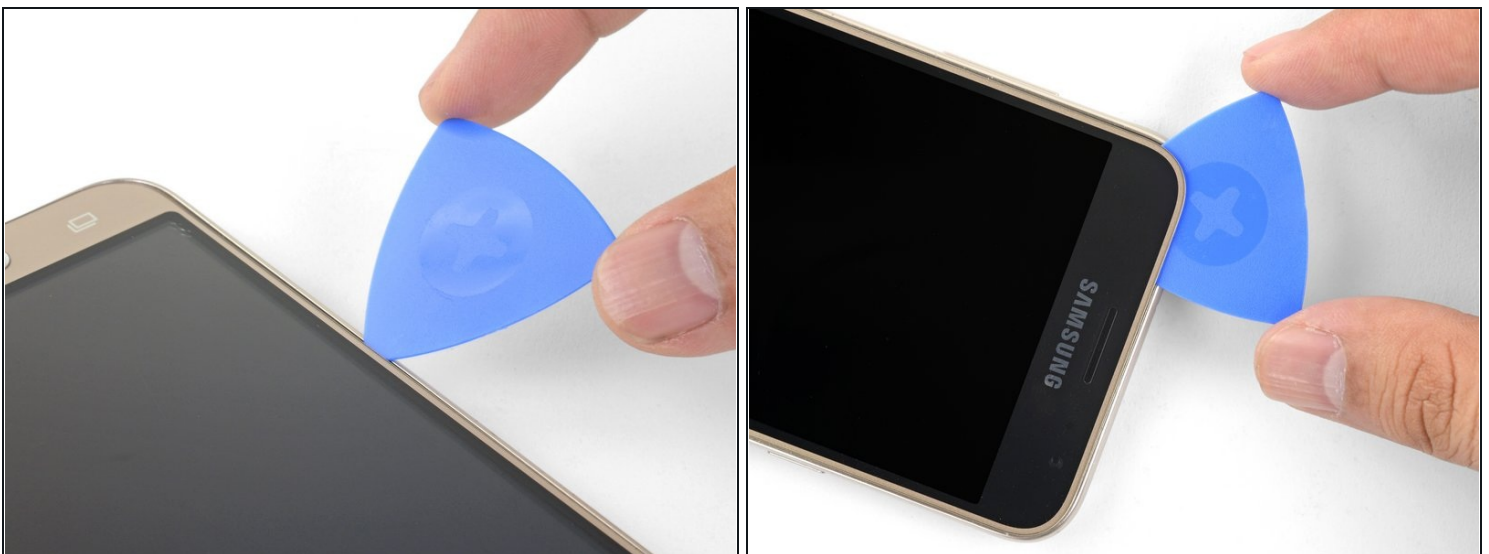
- Once the pick's point is in the seam, slowly slide the opening pick along the right edge to separate the adhesive.
- ⓘ You do not need to insert the pick into the seam more than 3 mm to cut the adhesive.

Step 9



- Continue cutting the adhesive with the opening pick, rounding the bottom right corner and slicing through the bottom bezel area.
- ⓘ If you are having trouble cutting through the adhesive, [apply a heated iOpener](#) to the bottom edge for a minute before trying again.
- ⓘ Push the pick in as far as the bezel's thickness in order to slice through all of the adhesive. Slice around the Home button.

Step 10



- Repeat the heating and slicing procedure for the left and top edges of the phone.
- ⓘ If you have trouble slicing the top left corner, you may have hit the digitizer cable. Pull the pick out slightly and try again.

Step 11



- ① The goal is to loosen the top panel in order to access the AMOLED panel.
- Grasp the top panel by the corners and slowly swing the bottom edge up slightly.
- Gently wiggle the top panel and use an opening pick to slice any remaining adhesive.
- The Home button will most likely fall out. Remove it and keep it in a safe location for re-assembly.
- ① The top panel is still connected to the AMOLED display by a digitizer flex cable. Optionally, you can use scissors to cut the flex cable and completely remove the top panel. *This will render your old display unusable.*

Step 12



- [Heat an iOpener](#) and apply it to the front of the phone for a minute, covering as much of the screen as possible.
- Take note of the following areas when prying the AMOLED panel:
 - Strong adhesive holding the AMOLED panel to the frame
 - Display flex cable, which will hinder slicing if hit

Step 13



- Insert the point of an opening pick under the bottom left corner of the AMOLED panel.
 - ⓘ Use the [indent](#) on the edge of the frame to help getting the pick in place.
- Slowly and firmly push the pick in to slice the adhesive underneath the AMOLED panel.
- ⓘ If you are having trouble inserting the pick, reheat an iOpener and apply it to the area for a minute before trying again.

Step 14



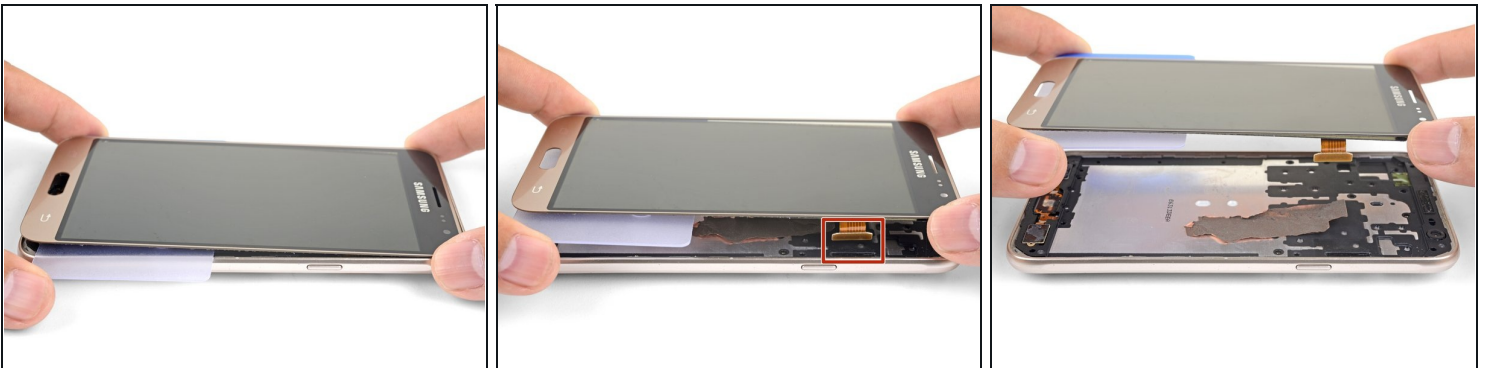
- ① The goal is to separate the AMOLED panel from the frame.
- Insert a [plastic opening card](#) under the AMOLED panel, using the gap created by the opening pick to get the card started.
- Slowly and firmly press the card inwards, wiggling it as needed, until it slices through the other side.
- ① If the slicing becomes hard, you can always reheat an iOpener and apply it to the screen for a minute to help soften the adhesive.

Step 15



- Once the plastic card cuts through the width of the phone, slowly and firmly push it towards the top, wiggling it as needed.
- Continue until you release the AMOLED panel from the frame.
 - Apply a heated iOpener to help loosen stubborn adhesive.
 - Use opening picks to slice through stray adhesive areas.

Step 16



- Slowly lift the AMOLED panel and digitizer together up from the frame. Use the plastic card to support the AMOLED panel.
- As you lift the screen, thread the display flex cable out of its cutout.
- Remove the screen.

Step 17



- Follow these tips as you install a new screen.
- Scrape all adhesive residue from the frame surface. Use high concentration (over 90%) isopropyl alcohol to help. *A replacement screen attached to an uneven surface will crack.*
 - Use an opening tool to carefully scrape the adhesive off the capacitive button surfaces.
 - Connect your new screen by threading the display cable through the cutout and connecting it to the phone. Power on your phone and test it before re-adhering the screen.
 - Do not forget to replace the Home button during reinstallation.
 - Keep the replacement screen connected to the phone during the re-adhering process to help align the screen properly.
 - Be sure to peel **all** adhesive plastic liners on the replacement screen when re-adhering the screen.

To reassemble your device, follow these instructions in reverse order.

Take your e-waste to an [R2 or e-Stewards certified recycler](#).

Repair didn't go as planned? Check out our [Samsung Galaxy J3 \(2016\) Answers community](#) for troubleshooting help.