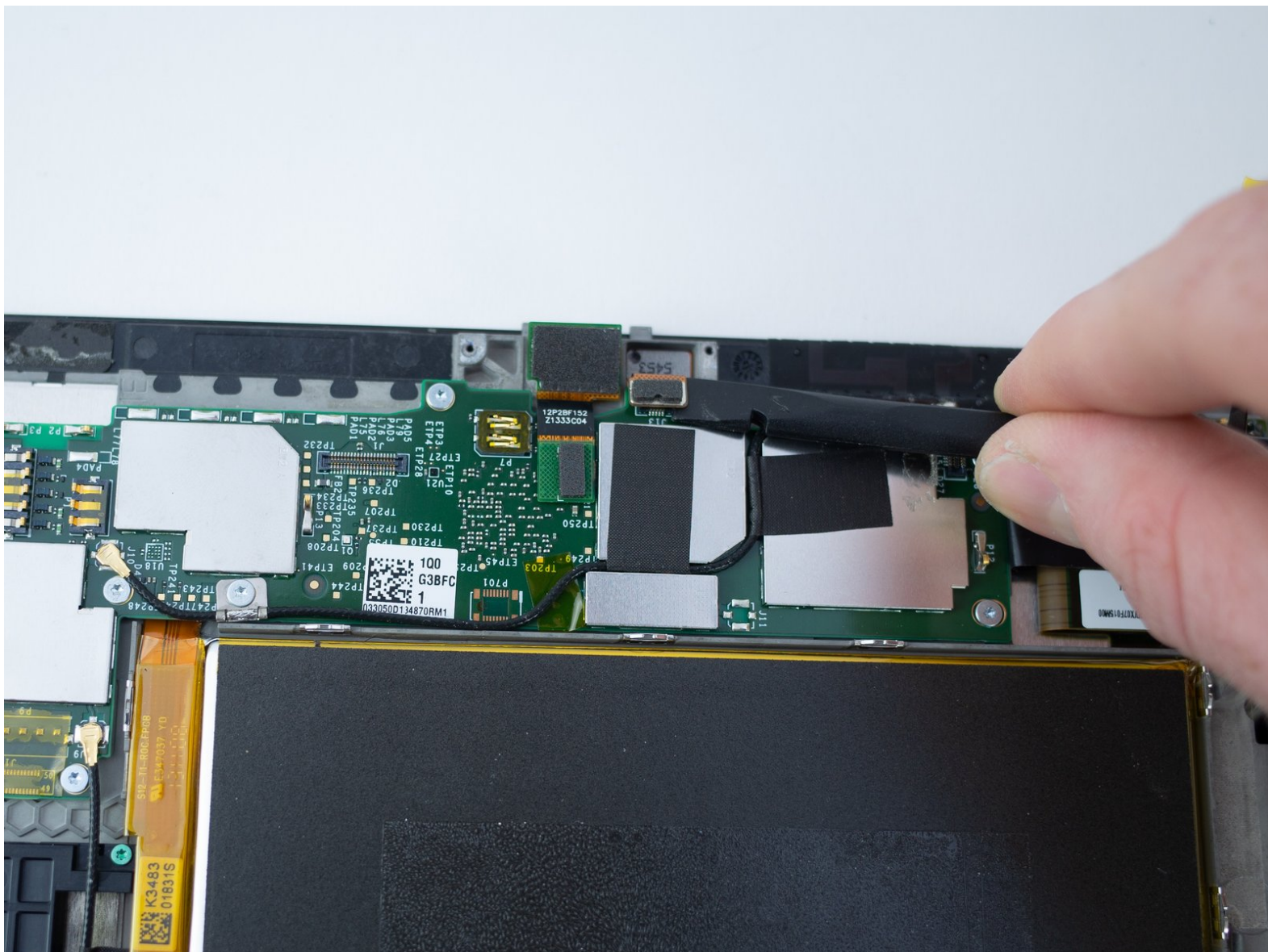




Kindle Fire HDX 7" Ambient Light Sensor Replacement

A free guide that shows how to replace the ambient light sensor on a Kindle Fire HDX 7" tablet.

Written By: Blake Klein



INTRODUCTION

If your Kindle Fire HDX 7" tablet is staying bright when the night falls and dark when the suns out, the ambient light sensor may be busted.

First check the settings and make sure that auto brightness is turned on, if it is, follow this guide to replace it yourself.



TOOLS:

- [iOpener Kit](#) (1)
- [Spudger](#) (1)
- [ESD Safe Tweezers Blunt Nose](#) (1)
- [T3 Torx Screwdriver](#) (1)
- [T5 Torx Screwdriver](#) (1)



PARTS:

- [Kindle Fire HDX 7" Ambient Light Sensor](#) (1)

Step 1 — Speaker Bezel



- Insert an opening pick underneath the speaker bezel, and slide it along the perimeter to separate it from the tablet.

 The adhesive is strong and may require an [iOpener](#), or heat gun, to soften.

Step 2



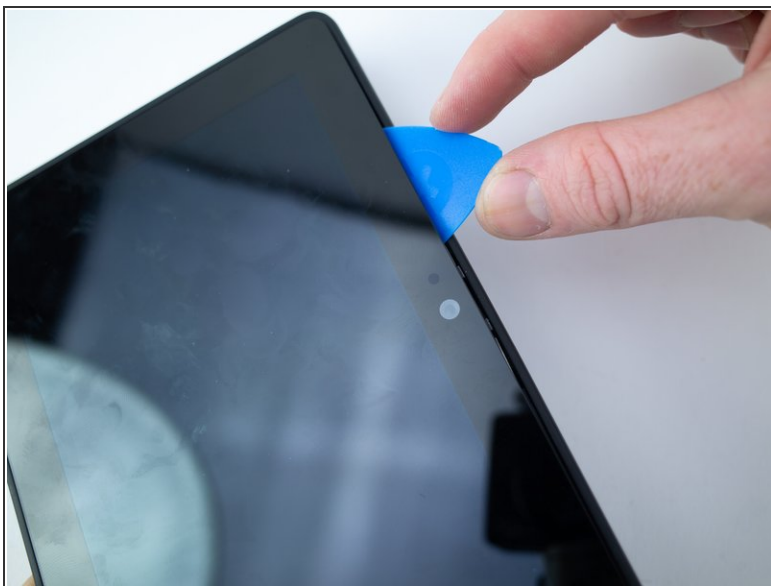
- Remove the speaker bezel.

Step 3 — Rear Panel



- Remove the six pink 3mm T3 Torx screws from the back case.

Step 4



- Wedge opening picks around the perimeter between the display and back case.
- Work the opening picks around the perimeter until the two halves disengage from each other.

⚠ Don't completely separate as the display ribbon cable still connects the two.

Step 5



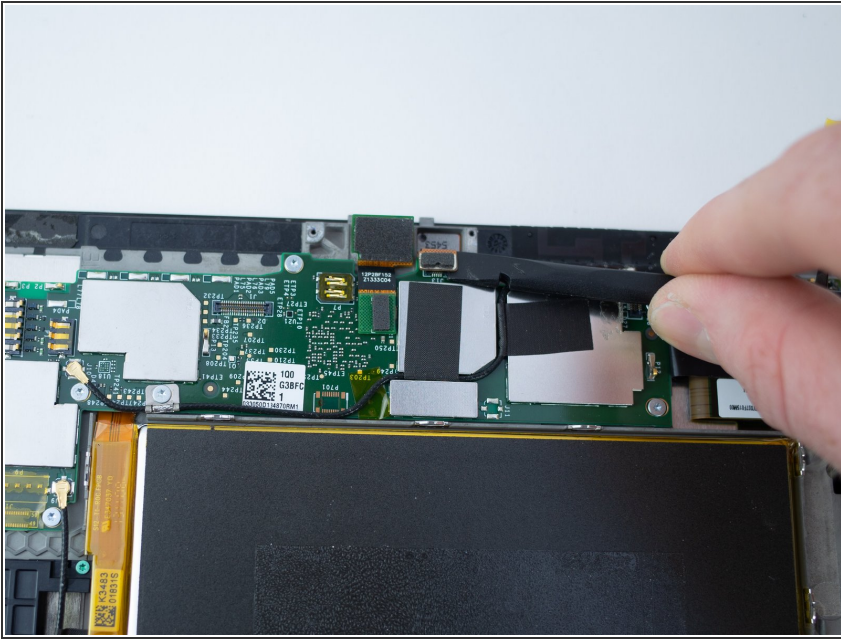
- Use the flat end of a spudger to pry up and disconnect the rear panel press-fit connector from the motherboard.

Step 6



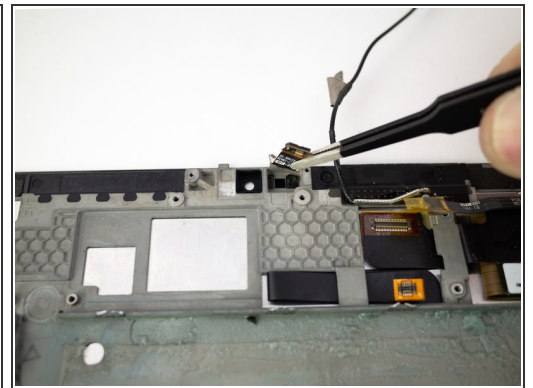
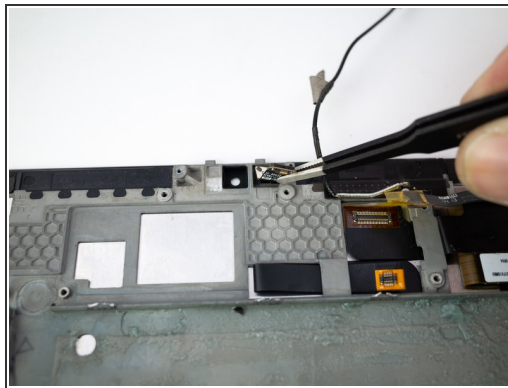
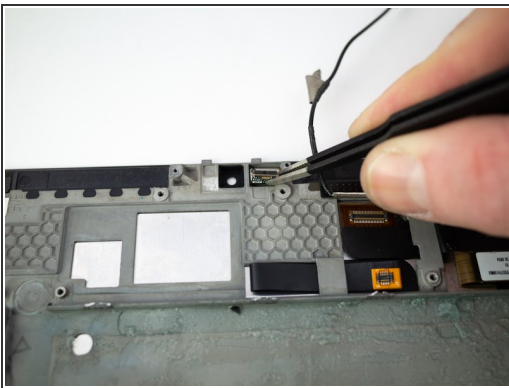
- There may be a glue strip between the battery and the outside case. Gently pry the case open and use the flat end of a spudger to separate the glue strip.

Step 7 — Ambient Light Sensor



- Pry up the ambient light sensor press-fit connector from the motherboard with the flat end of a spudger.

Step 8



- ⓘ The motherboard has been removed in this image, but its removal is not necessary to complete this replacement.
- Pull the ambient light sensor out of its socket with a pair of tweezers to remove.

To reassemble your device, follow these instructions in reverse order.