



Kindle Fire HDX 7" Display Assembly Replacement

Replacement guide for the display assembly on a...

Written By: Blake Klein



INTRODUCTION

Replacement guide for the display assembly on a Kindle Fire HDX 7" tablet.

The display assembly is glued to the mid-frame and will require some heat to make removal possible.

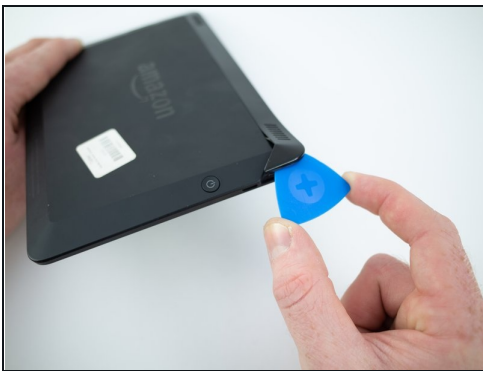
TOOLS:

[iFixit Opening Picks \(Set of 6\)](#) (1)
[Spudger](#) (1)
[ESD Safe Blunt Nose Tweezers](#) (1)
[T3 Torx Screwdriver](#) (1)
[T5 Torx Screwdriver](#) (1)
[iFixit Adhesive Remover](#) (1)
[iOpener](#) (1)

PARTS:

[Kindle Fire HDX 7" Screen](#) (1)

Step 1 — Speaker Bezel



- Insert an opening pick underneath the speaker bezel, and slide it along the perimeter to separate it from the tablet.
- ⓘ The adhesive is strong and may require an [iOpener](#), or heat gun, to soften.

Step 2



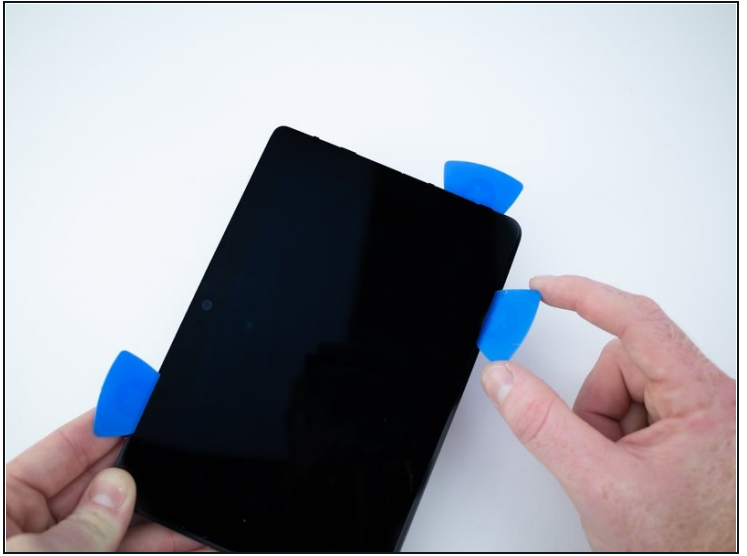
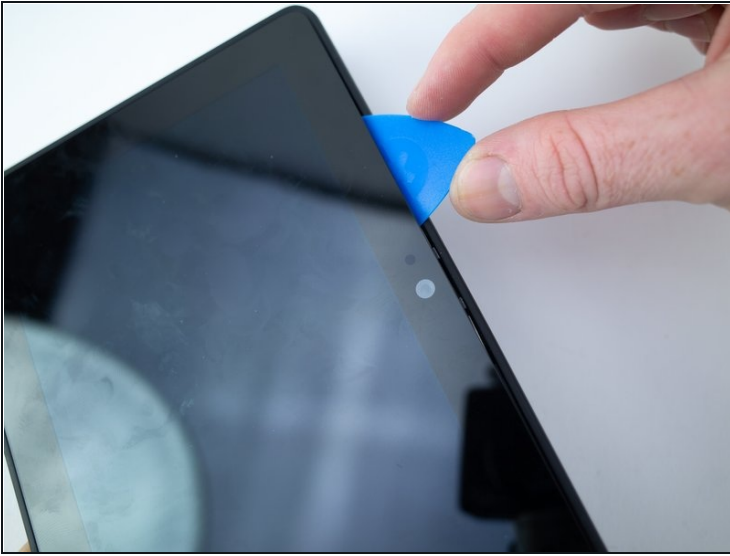
- Remove the speaker bezel.

Step 3 — Rear Panel



- Remove the six pink 3mm T3 Torx screws from the back case.

Step 4



- Wedge opening picks around the perimeter between the display and back case.
- Work the opening picks around the perimeter until the two halves disengage from each other.

⚠ Don't completely separate as the display ribbon cable still connects the two.

Step 5



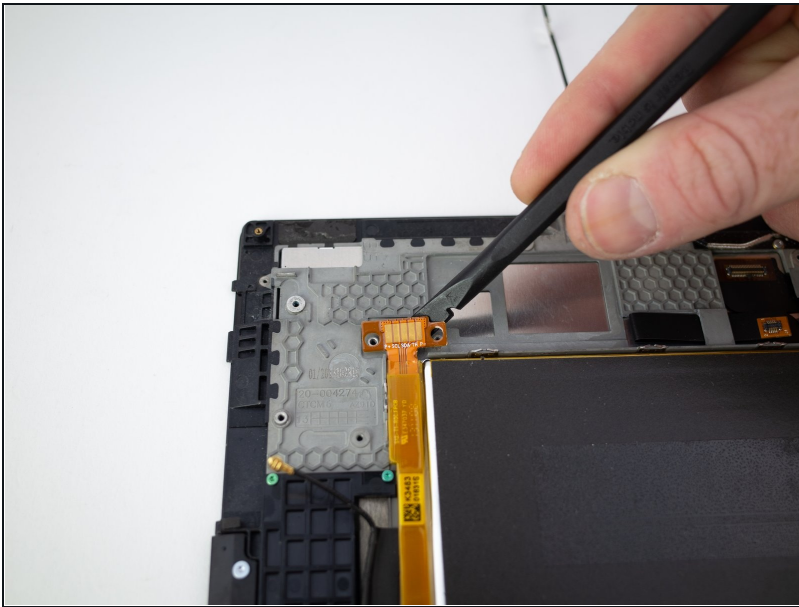
- Use the flat end of a spudger to pry up and disconnect the rear panel press-fit connector from the motherboard.

Step 6



- There may be a glue strip between the battery and the outside case. Gently pry the case open and use the flat end of a spudger to separate the glue strip.

Step 7 — Battery



- Pry up the battery connector with the flat end of a spudger.

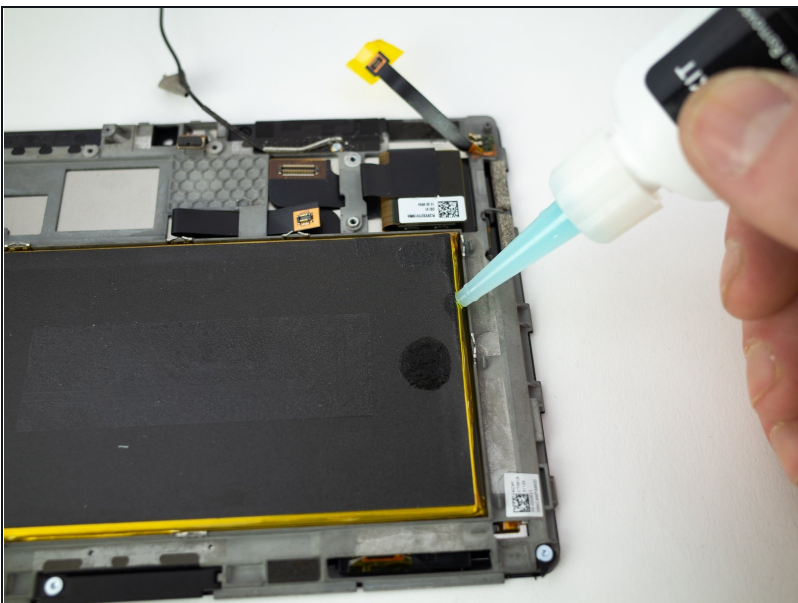
Step 8



⚠ iFixit adhesive remover contains acetone, a mild skin and eye irritant.

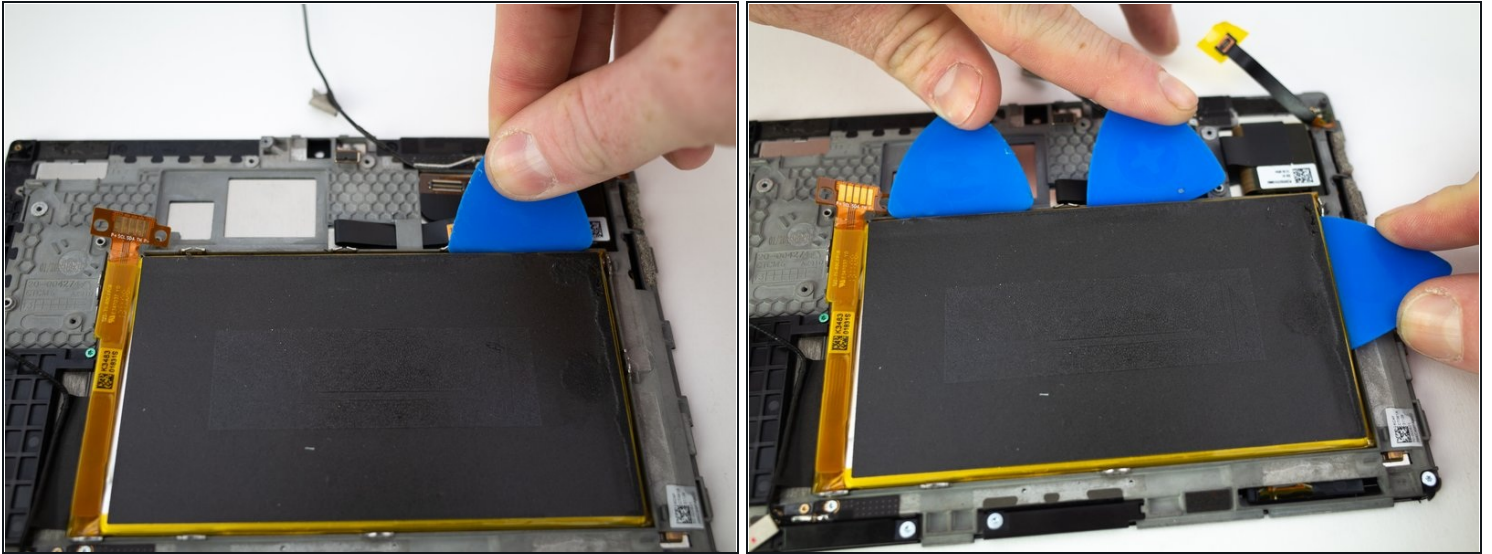
- Wear eye protection when handling and applying the adhesive remover. (Eye protection is included in your kit.)
- **Do not** wear contact lenses without eye protection.
- Protective gloves are also included in your kit. If you are concerned about possible skin irritation, put your gloves on now.

Step 9



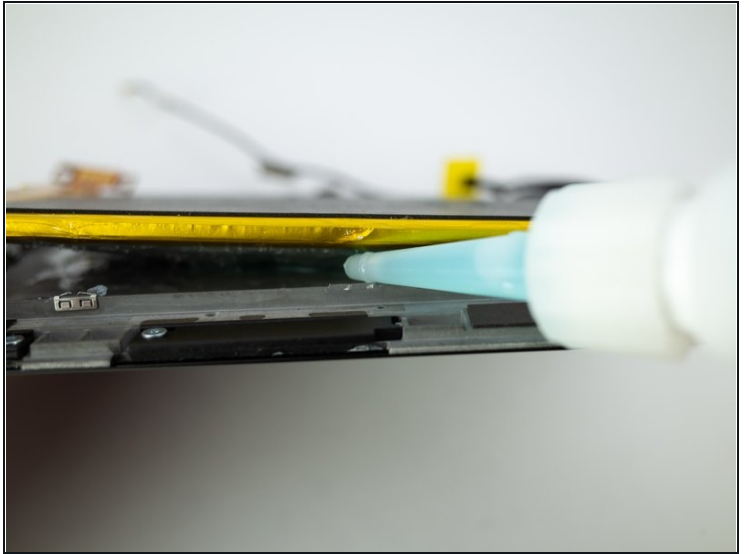
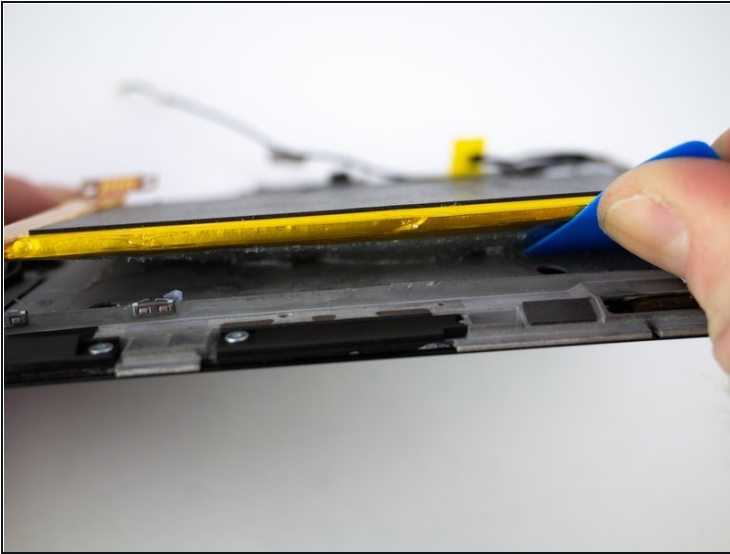
- Apply a small amount of adhesive remover (approximately 1 ml) evenly along the elevated edge of the battery cell.
- Wait 2-3 minutes for the liquid adhesive remover to penetrate underneath the battery cell before you proceed to the next step.

Step 10



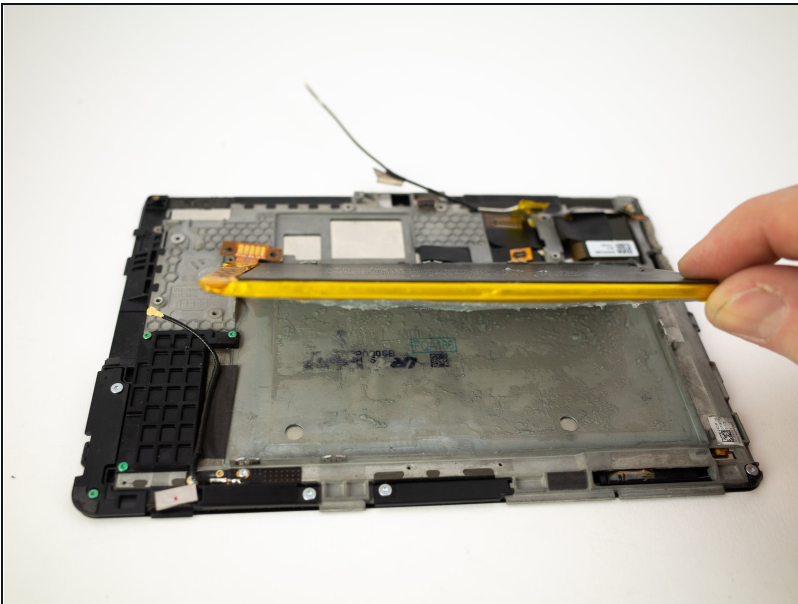
- Slide a few opening picks between the battery and the raised metal edge.
 - Pry upwards to lift the battery up.
- ① Step 15 may need to be repeated a few times to weaken the glue.

Step 11



- Apply a small amount of adhesive remover (approximately 1 ml) underneath the battery and wait 2-3 minutes for it to penetrate.
 - ① You may need to repeat this a few times.
- Continue prying up the battery.

Step 12



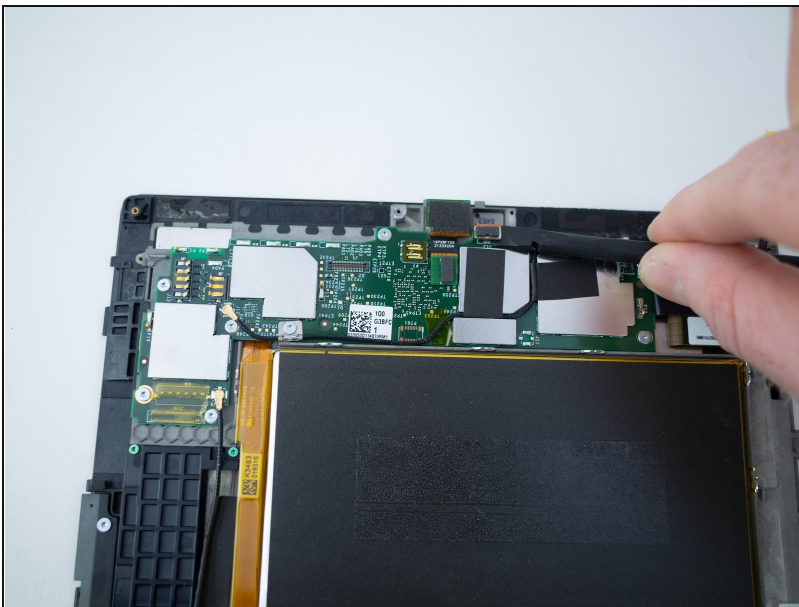
- Remove the battery from the mid-frame.

Step 13 — Motherboard



- Grab the yellow tape with a pair of [tweezers](#) and pull upwards to disconnect the press-fit connector.

Step 14



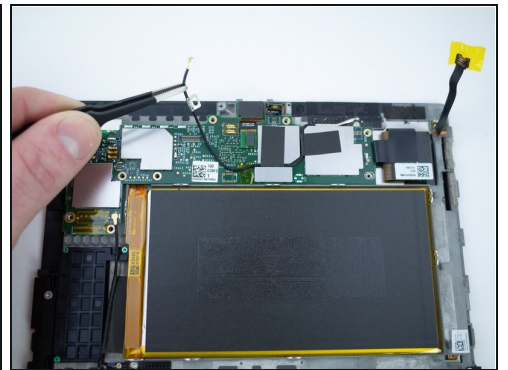
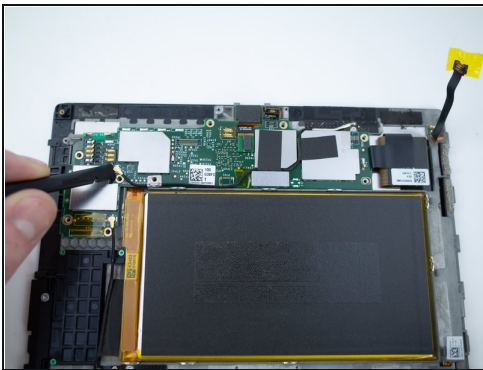
- Use the flat end of a spudger to disconnect the front camera press-fit connector from the motherboard.

Step 15



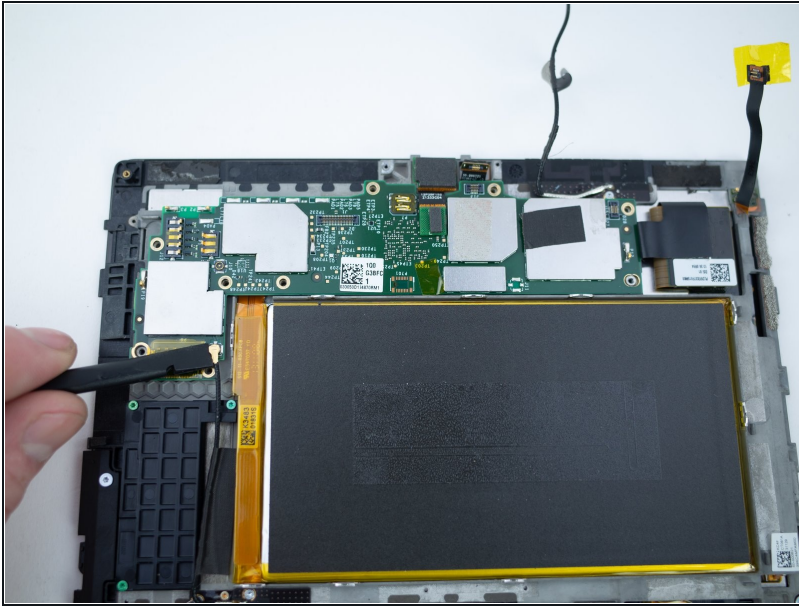
- Remove the nine 3mm T6 Torx screws from the motherboard.

Step 16



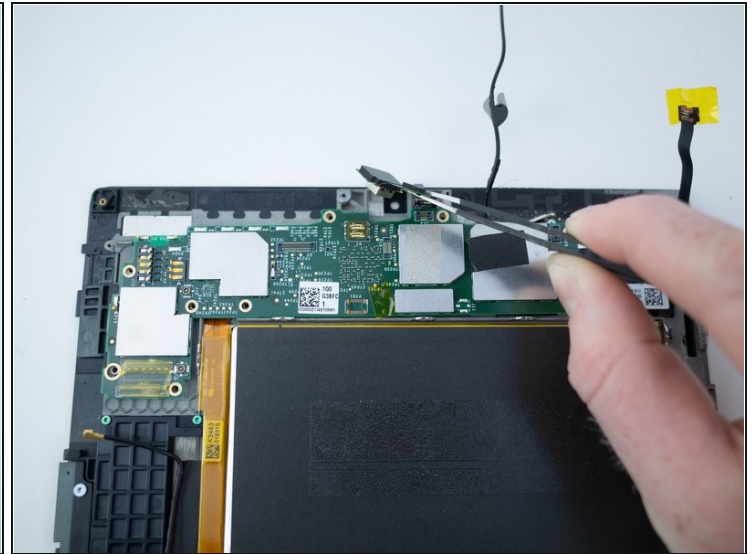
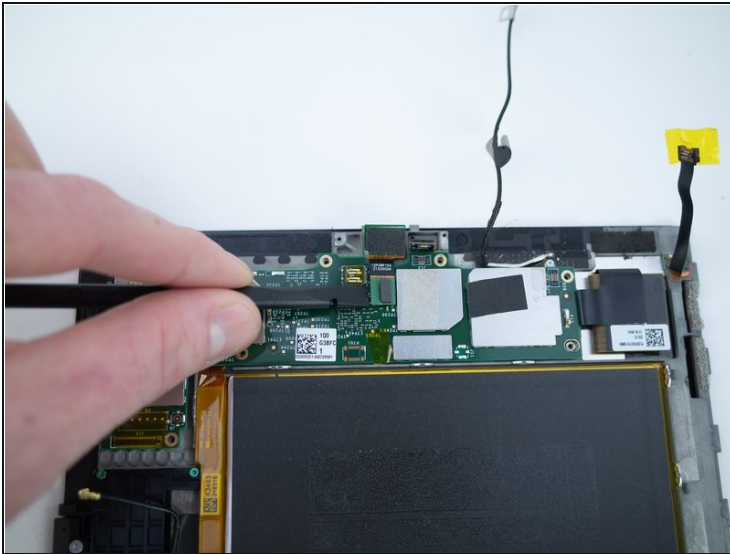
- Use a spudger to pry up and disconnect the antenna cable from the motherboard.
- Pull the antenna cable up and off of the motherboard.
⚠ Don't remove completely as it's soldered to the frame.

Step 17



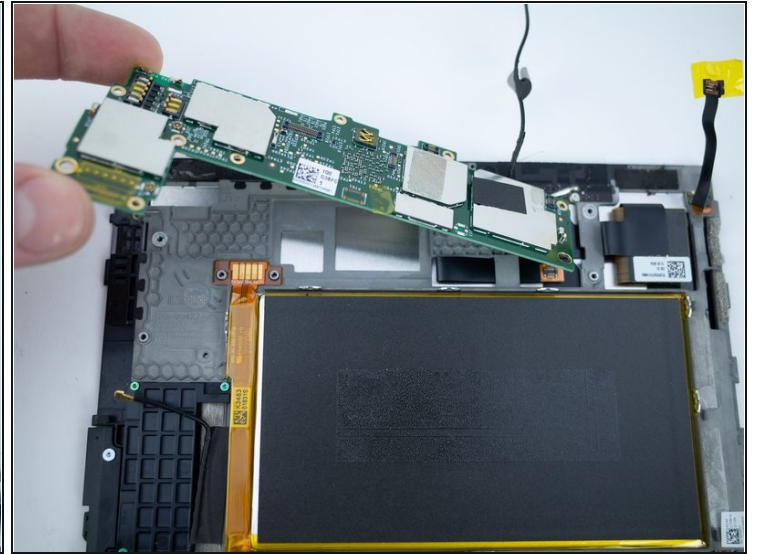
- Use a spudger to disconnect the second antenna cable from the motherboard.

Step 18



- Use the flat end of a spudger to pry up and disconnect the front camera press-fit connector from the motherboard.
- Remove the front camera.

Step 19



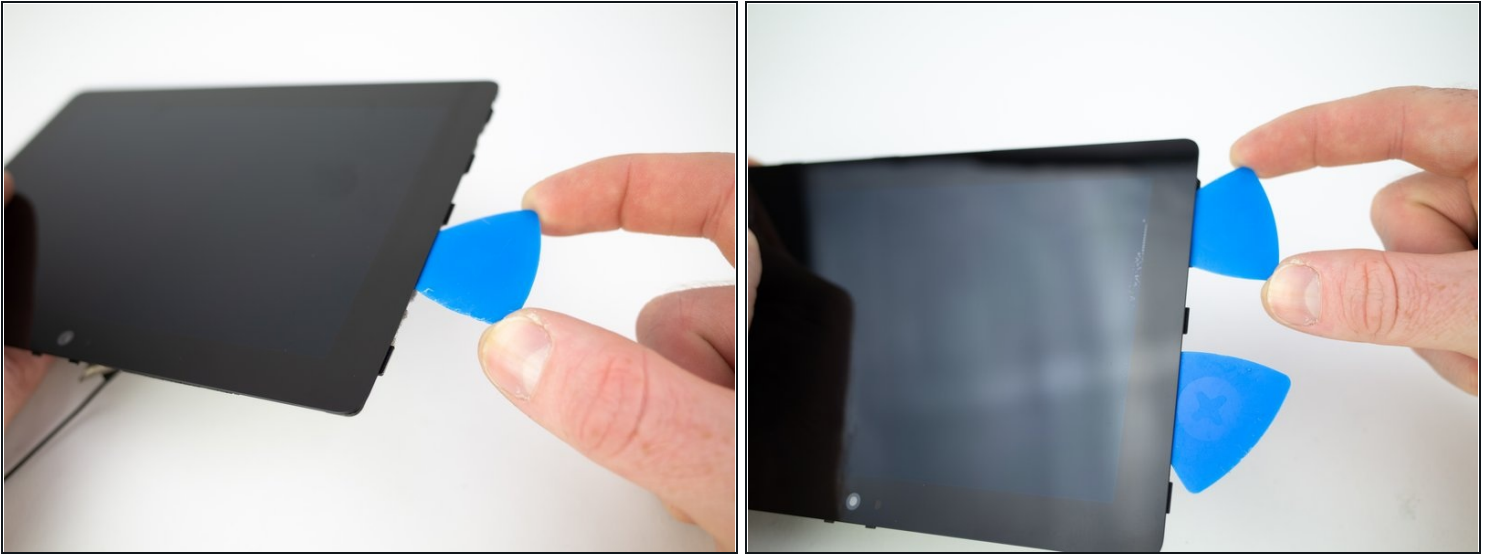
- Remove the motherboard from the tablet.

Step 20 — Display Assembly



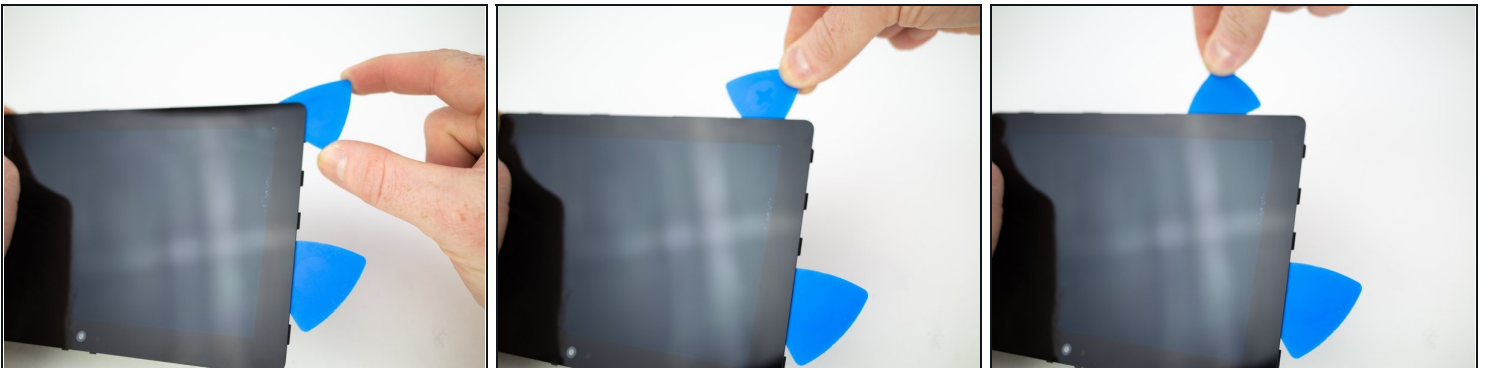
- Heating the edges of the tablet will help soften the adhesive securing the display, making it easier to open.
- Use a hairdryer or [prepare an iOpener](#) and apply it to the edge of the tablet for about 90 seconds in order to soften up the adhesive underneath.

Step 21



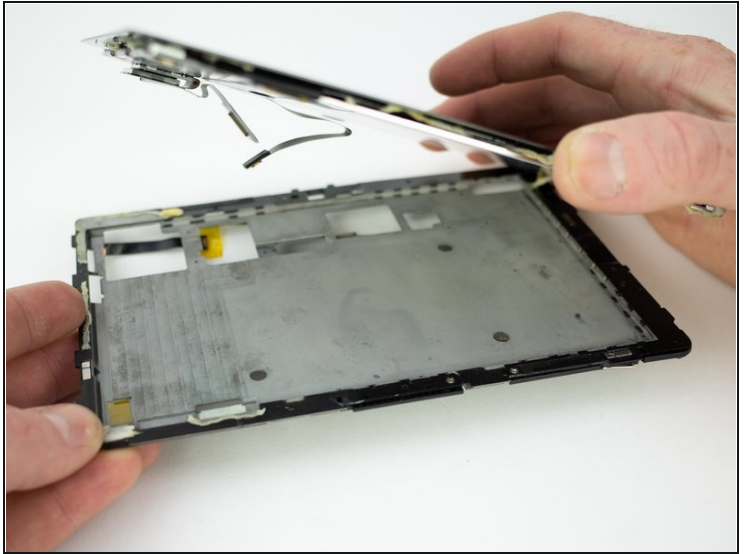
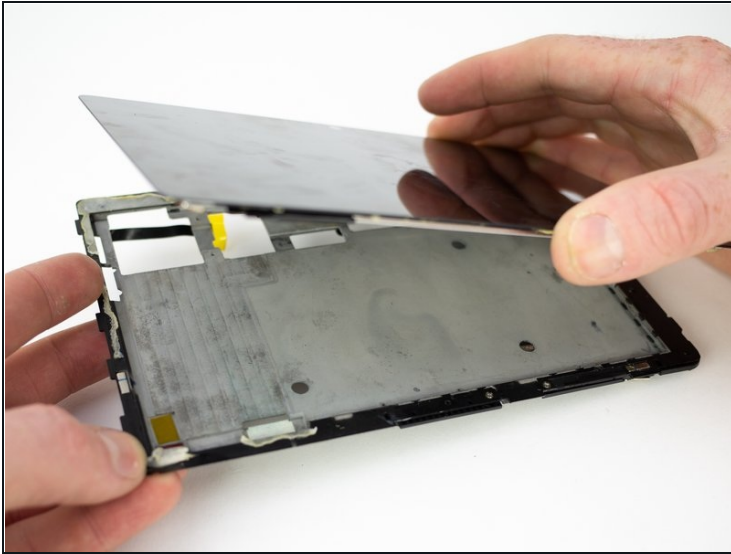
- Insert an opening pick between the glass display and the metal mid-frame.
- Insert a second opening pick above the first.

Step 22



- Roll the second opening pick all the way around the perimeter of the display.

Step 23



- Lift up on the glass display to remove it from the metal mid-frame.

To reassemble your device, follow these instructions in reverse order.