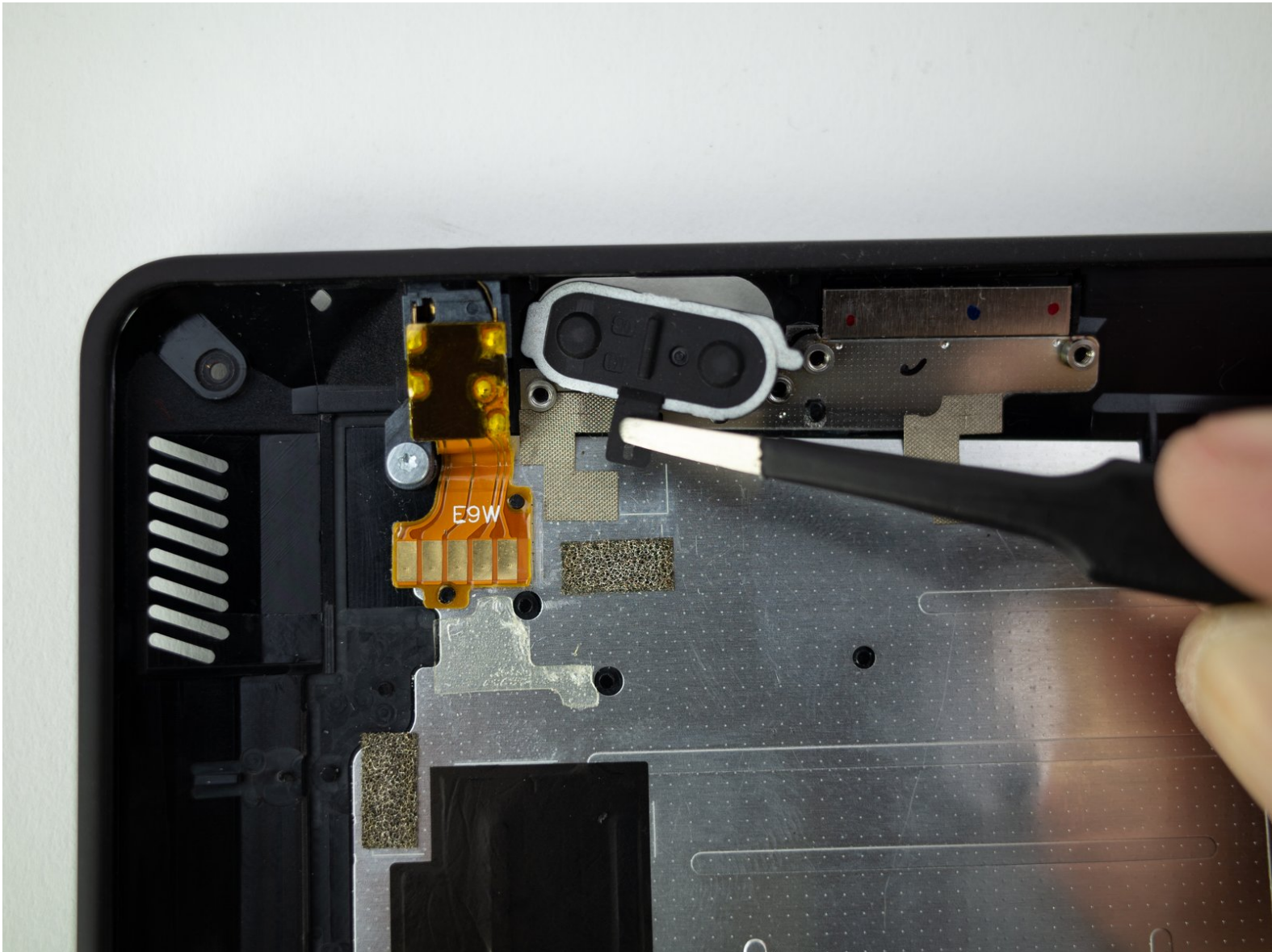




Kindle Fire HDX 7" Volume Button Replacement

A free guide on how to replace the volume buttons on a Kindle Fire HDX 7" tablet.

Written By: Blake Klein



INTRODUCTION

Is your Kindle Fire HDX 7" tablet refusing to get louder or quieter at the push of its buttons? The ribbon cable or buttons may be broken.

Follow this guide to replace them yourself!



TOOLS:

- [iOpener Kit](#) (1)
- [Spudger](#) (1)
- [ESD Safe Tweezers Blunt Nose](#) (1)
- [T3 Torx Screwdriver](#) (1)
- [T5 Torx Screwdriver](#) (1)



PARTS:

- [Kindle Fire HDX 7" Volume Button Board](#) (1)
- [Kindle Fire HDX 7" Volume Button](#) (1)

Step 1 — Speaker Bezel



- Insert an opening pick underneath the speaker bezel, and slide it along the perimeter to separate it from the tablet.

 The adhesive is strong and may require an [iOpener](#), or heat gun, to soften.

Step 2



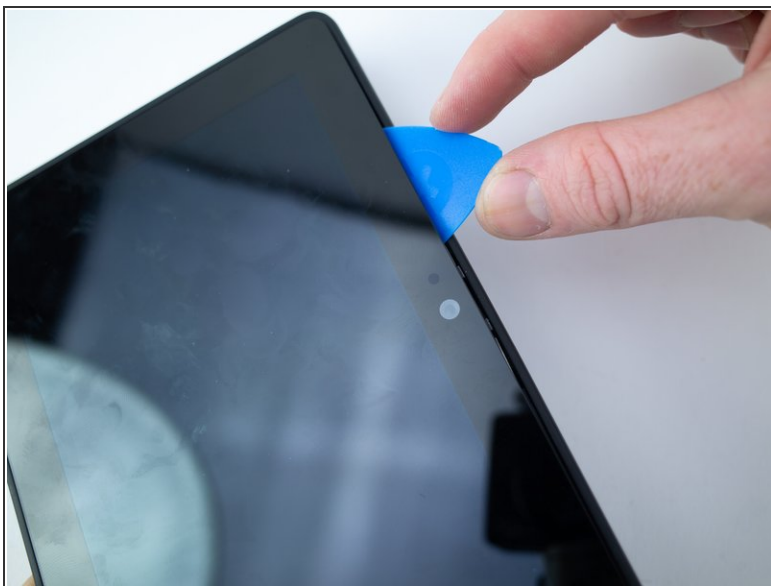
- Remove the speaker bezel.

Step 3 — Rear Panel



- Remove the six pink 3mm T3 Torx screws from the back case.

Step 4



- Wedge opening picks around the perimeter between the display and back case.
- Work the opening picks around the perimeter until the two halves disengage from each other.

⚠ Don't completely separate as the display ribbon cable still connects the two.

Step 5



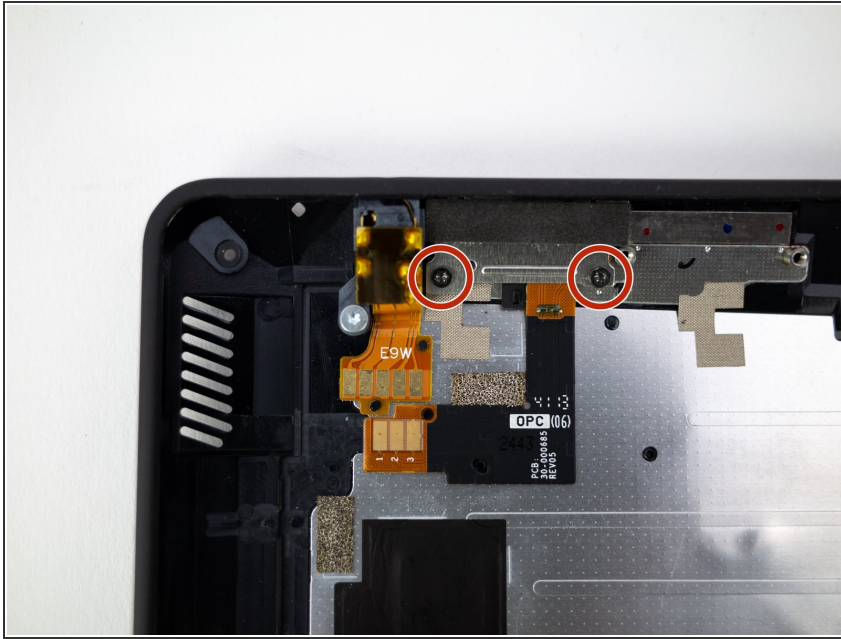
- Use the flat end of a spudger to pry up and disconnect the rear panel press-fit connector from the motherboard.

Step 6



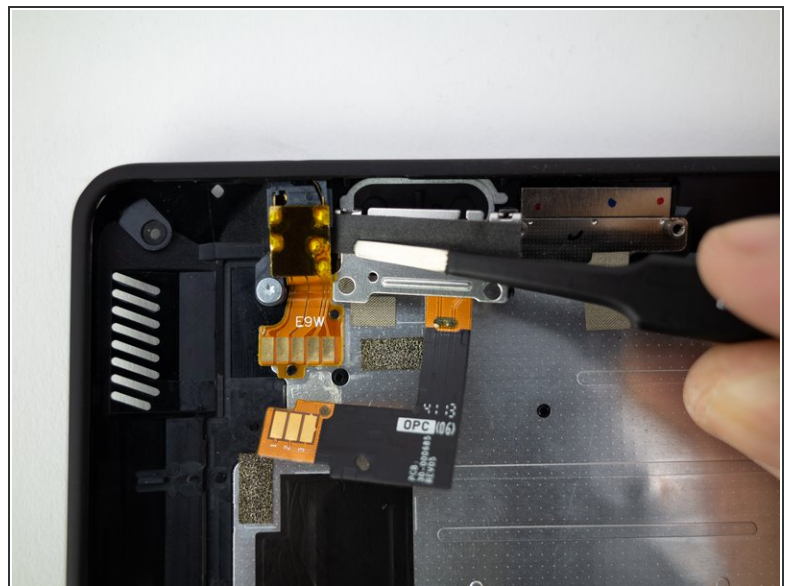
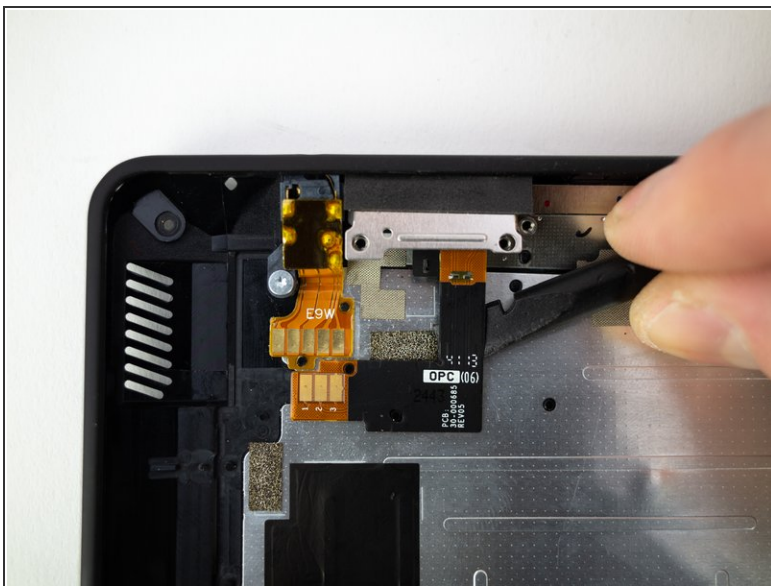
- There may be a glue strip between the battery and the outside case. Gently pry the case open and use the flat end of a spudger to separate the glue strip.

Step 7 — Volume Button



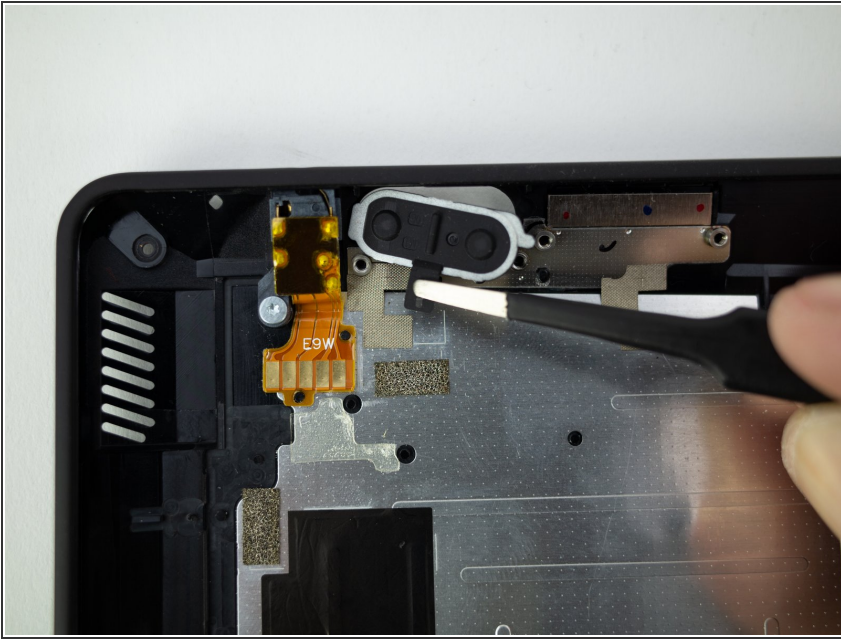
- Remove the two 2.1mm T5 Torx screws from the volume button retaining bracket.

Step 8



- Pry up the volume button ribbon cable from the rear panel with the flat end of a spudger.
- Pull up on the volume button ribbon cable to remove it from the tablet.

Step 9



- Remove the volume button from the rear panel.

To reassemble your device, follow these instructions in reverse order.