



Siemens Surpresso brewing unit maintenance

The gaskets of the brewing unit are heavily...

Written By: VauWeh



INTRODUCTION

The gaskets of the brewing unit are heavily used and should be replaced from time to time. The Siemens brewing unit is identical to units of other brands, e.g. Nivona, Bosch, Melitta.

TOOLS:

T15 Torx Screwdriver (1)

PARTS:

Dichtungssatz Brühgruppe (1)

Step 1 — Brewing Unit maintenance



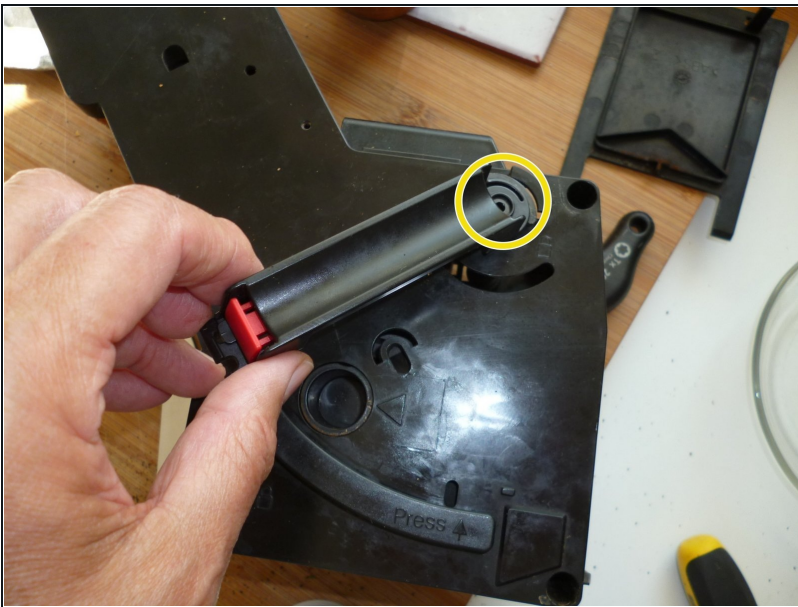
- Remove the brewing unit from the device.

Step 2



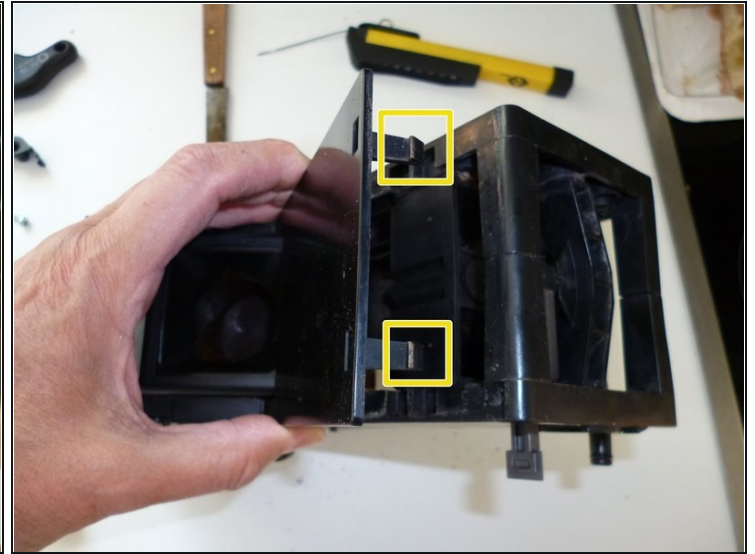
- Take off the cap covering the screwhole in one corner. The cap ensures a better fit of the brewing unit.
- Note: some versions of the brewing unit do not have this cap.

Step 3



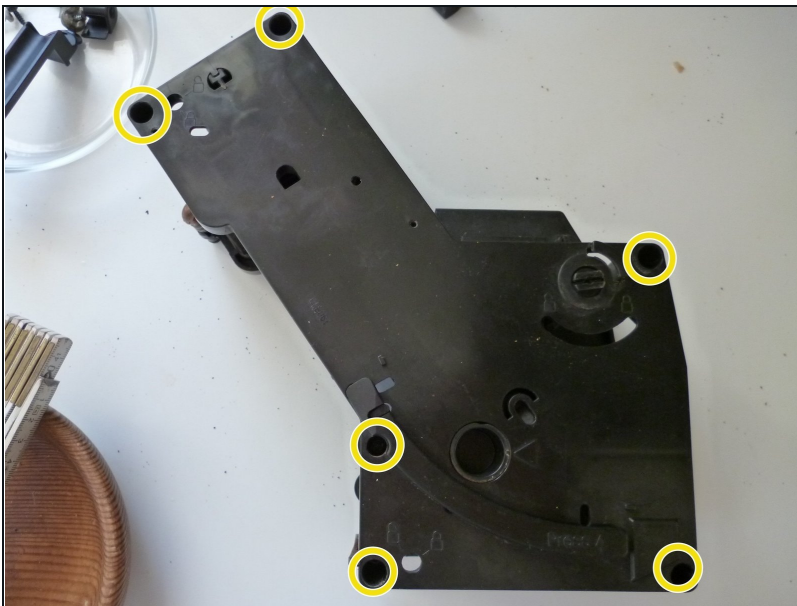
- Remove the single black Torx T10 screw fixing the opening handle.
- Using a certain amount of force pull the opening handle out of the guidance near the red button.
- Rotate the handle 90 degrees counterclockwise, then lift it off.

Step 4



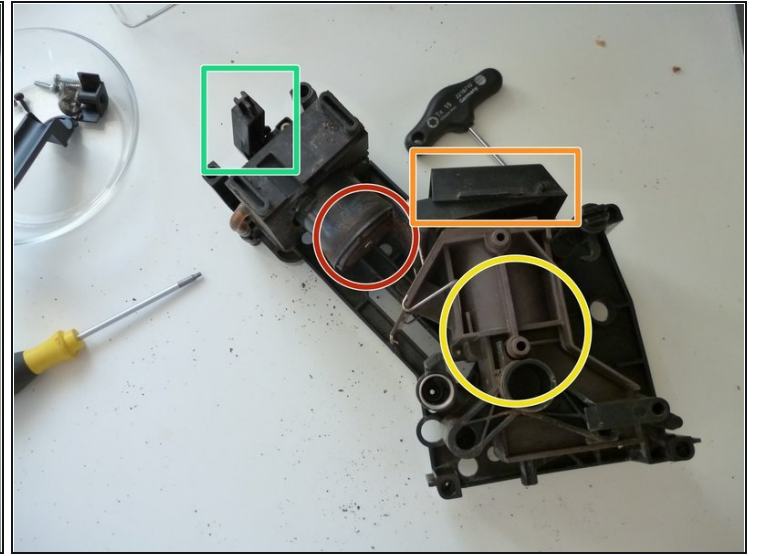
- Unclip the upper protection panel, then remove it by lifting it up.

Step 5



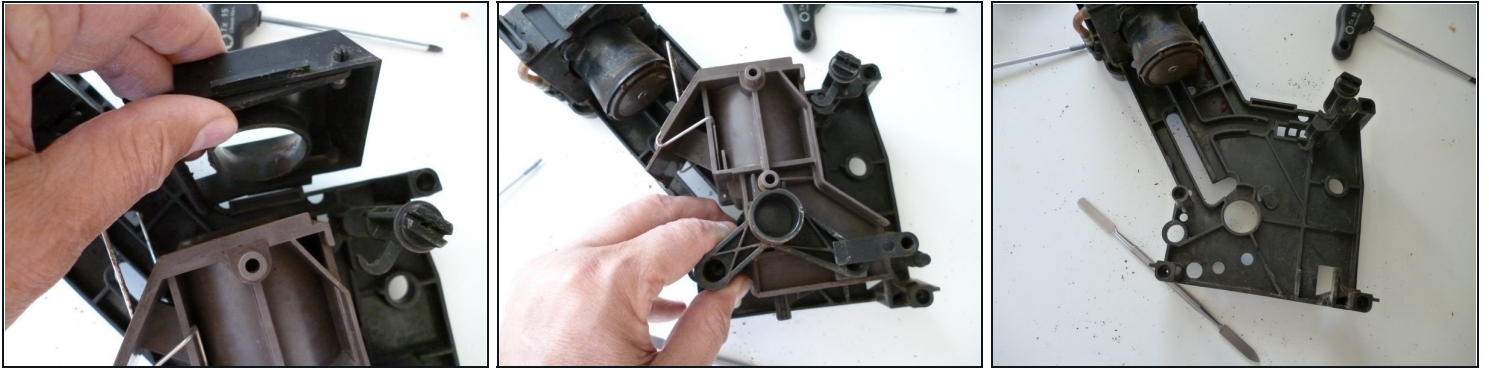
- Remove six Torx T15 screws holding together the brewing unit. The screwholes are rather deep.
- Lift the upper half of the brewing unit up.

Step 6



- The inside of the brewing unit is exposed. You can see:
- The upper piston and its gasket.
- The funnel for the coffee grounds
- The lower piston.
- The hold-down clamp

Step 7



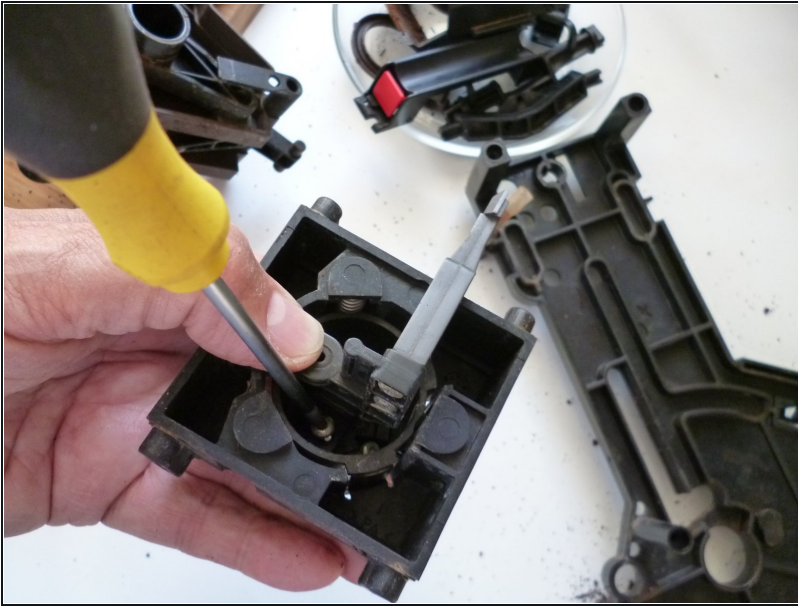
- Remove the funnel.
- Rotate the lower piston counterclockwise and lift it off.
- Lift off the upper piston. There is still a hose connecting the piston to the coffee outlet. In top there is also the downholder of the brewing unit.
- ① Sometimes this downholder is torn and the coffee leaks out of the brewing unit and does not fill your cup. Inspect the downholder for cracks. You can fix this using a special repair kit.

Step 8



- Remove the hose connecting the upper piston and the coffee outlet.
- Remove the upper piston.
- Remove the Torx T20 screw from the screen of the upper piston.
- Take off the cover of the gasket and the gasket.
- Replace the gaskets of the upper piston, the coffee outlet and water connector.
 - ① The lip of the piston gasket must point towards the pressure, i.e. downwards.
- Clean thoroughly all parts. Use food-proof silicone grease to lubricate the gaskets.

Step 9



- ① The crema-valve is located in the interior of the upper piston. It is fixed by two Torx T10 screws.
- Remove both screws. Lift off the valve. Inspect it and clean it.
- Note: there is another gasket on the shaft of the lower piston. Replacing it is difficult.
- Lubricate all sliding parts with food-proof silicone grease. Verify the smooth operating of the brewing unit.

To reassemble your device, follow these directions in reverse order.