



iPhone XS Display Assembly Replacement

Prerequisite-only guide for removing the display assembly from the iPhone XS for access to internal components.

Written By: Jeff Suovanen



INTRODUCTION

Prereq-only for detaching the display assembly.



TOOLS:

- [Tri-point Y000 Screwdriver](#) (1)
- [Spudger](#) (1)
- [Tweezers](#) (1)
- [Phillips #000 Screwdriver](#) (1)



PARTS:

- [iPhone XS Screen](#) (1)

Step 1 — Display Assembly



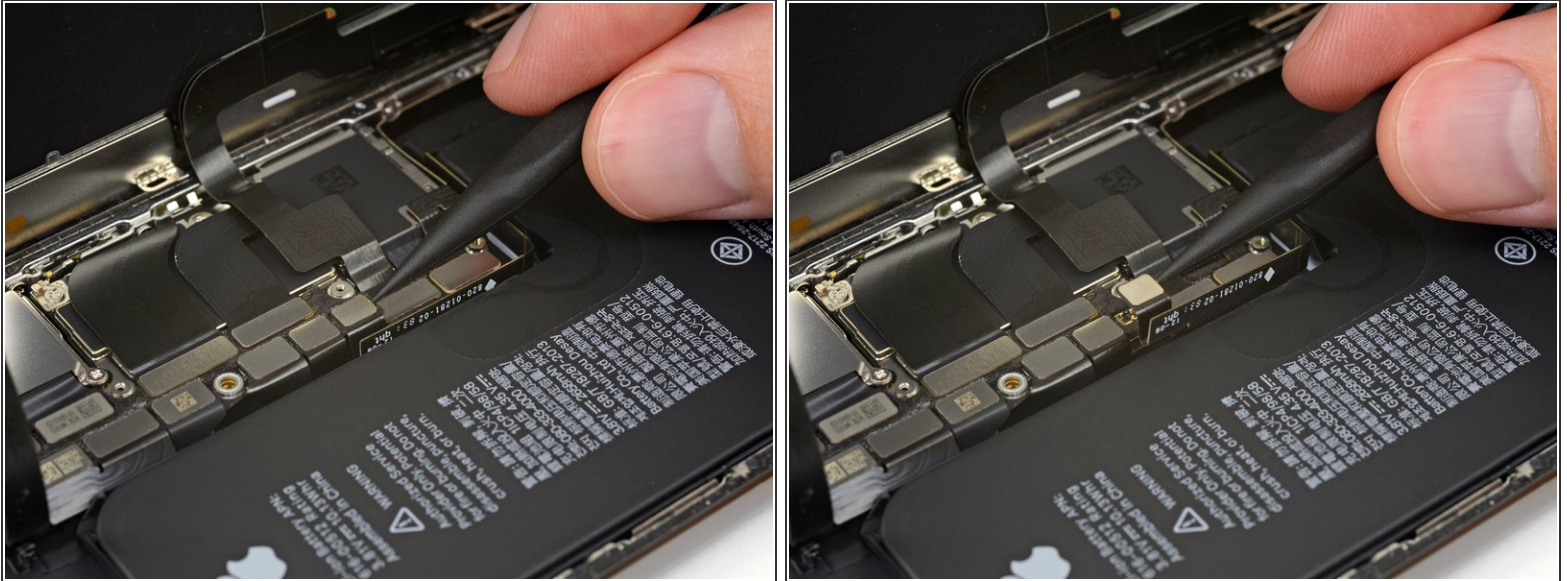
- Remove five screws securing the logic board connector bracket, of the following lengths:
 - Three 1.0 mm Y000 screws
 - One 1.3 mm Y000 screw
 - One 3.7 mm Phillips screw
- ☑ Throughout this repair, [keep track of each screw](#) and make sure it goes back exactly where it came from to avoid damaging your iPhone.

Step 2



- Remove the bracket.
- ⓘ The bracket may be lightly adhered in place. Lift gently but firmly to separate it.
- ★ During reassembly, this is a good point to power on your iPhone and test all functions before you seal the display in place. Be sure to power your iPhone back down completely before you continue working.

Step 3



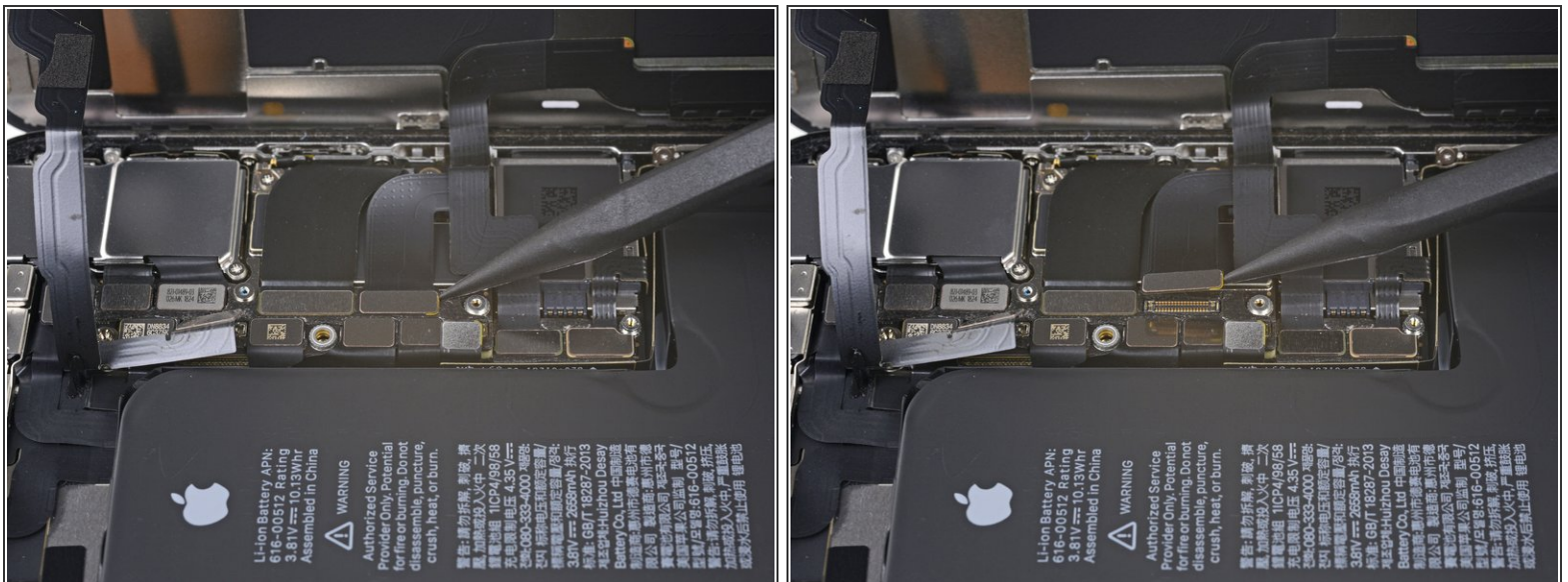
- Use a spudger or a clean fingernail to pry the battery connector up from its socket on the logic board.
- ⓘ Try not to damage the black silicone seal surrounding this and other board connections. These seals provide extra protection against water and dust intrusion.
- Bend the connector slightly away from the logic board to prevent it from accidentally making contact with the socket and providing power to the phone during your repair.

Step 4



- Use a spudger or a fingernail to pry up and disconnect the front panel sensor assembly connector.

Step 5



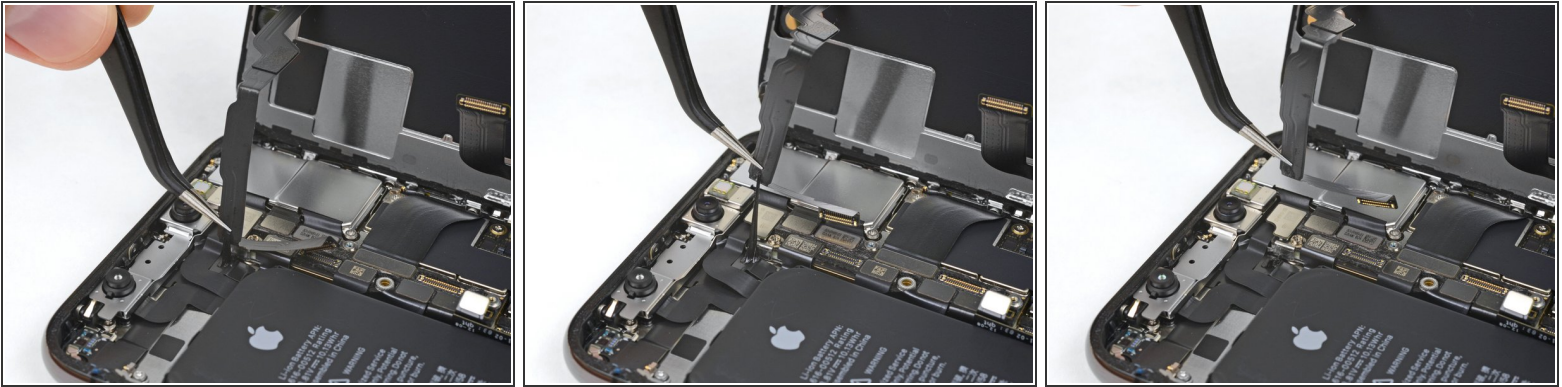
- Use a spudger or a fingernail to disconnect the OLED panel cable connector.
- ☑ To re-attach [press connectors](#) like this one, carefully align and press down on one side until it clicks into place, then repeat on the other side. Do not press down on the middle. If the connector is misaligned, the pins can bend, causing permanent damage.


Step 6



- Use a spudger or fingernail to pry the digitizer cable connector up from its socket.
 - ✦ This connector's recessed location makes it tricky to reconnect. Take your time and align it carefully, then gently press it into place with your fingertip—first one side, then the other. You should feel it click into place.
 - ✦ If any part of your screen doesn't respond to touch after your repair, disconnect the battery and then re-seat this connector, making sure it clicks fully into place and that there's no dust or other obstruction in the socket.

Step 7




 The front panel sensor assembly flex cable is lightly adhered in place.

- Carefully lift the cable until the adhesive separates.

Step 8



- Remove the display assembly.

 During reassembly, pause here if you wish to [replace the waterproof adhesive around the edges of the display](#).

To reassemble your device, follow these instructions in reverse order.