



# iPhone XS Max Display Assembly Replacement

Prerequisite-only guide for removing the display assembly from the iPhone XS Max for access to internal components.

Written By: Jeff Suovanen



# INTRODUCTION

Prereq-only for detaching the display assembly.



## TOOLS:

- [Tri-point Y000 Screwdriver](#) (1)
- [Spudger](#) (1)
- [Tweezers](#) (1)



## PARTS:

- [iPhone XS Max Screen](#) (1)

## Step 1 — Display Assembly

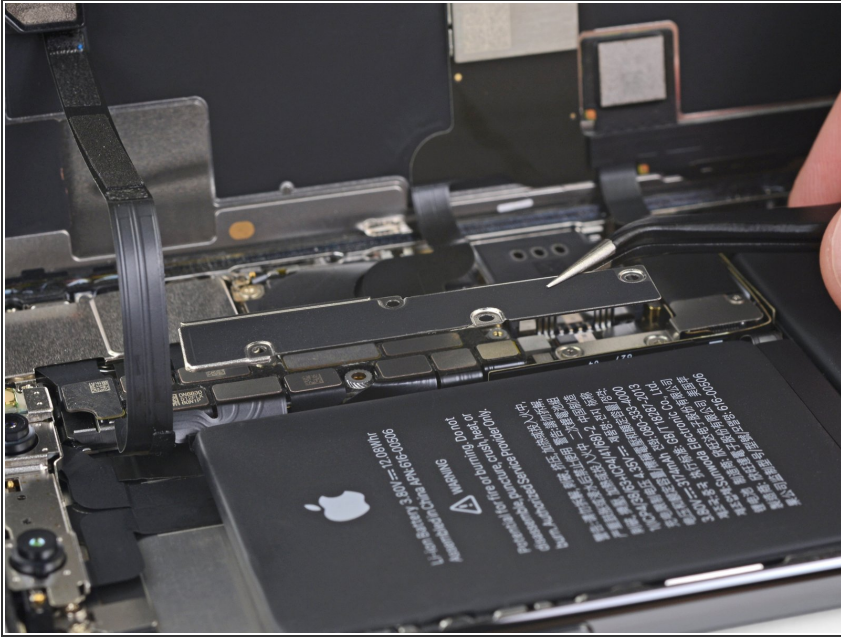


- Remove four Y000 screws securing the logic board cover bracket, of the following lengths:

- Two 1.1 mm screws
- One 1.5 mm screw
- One 3.7 mm screw

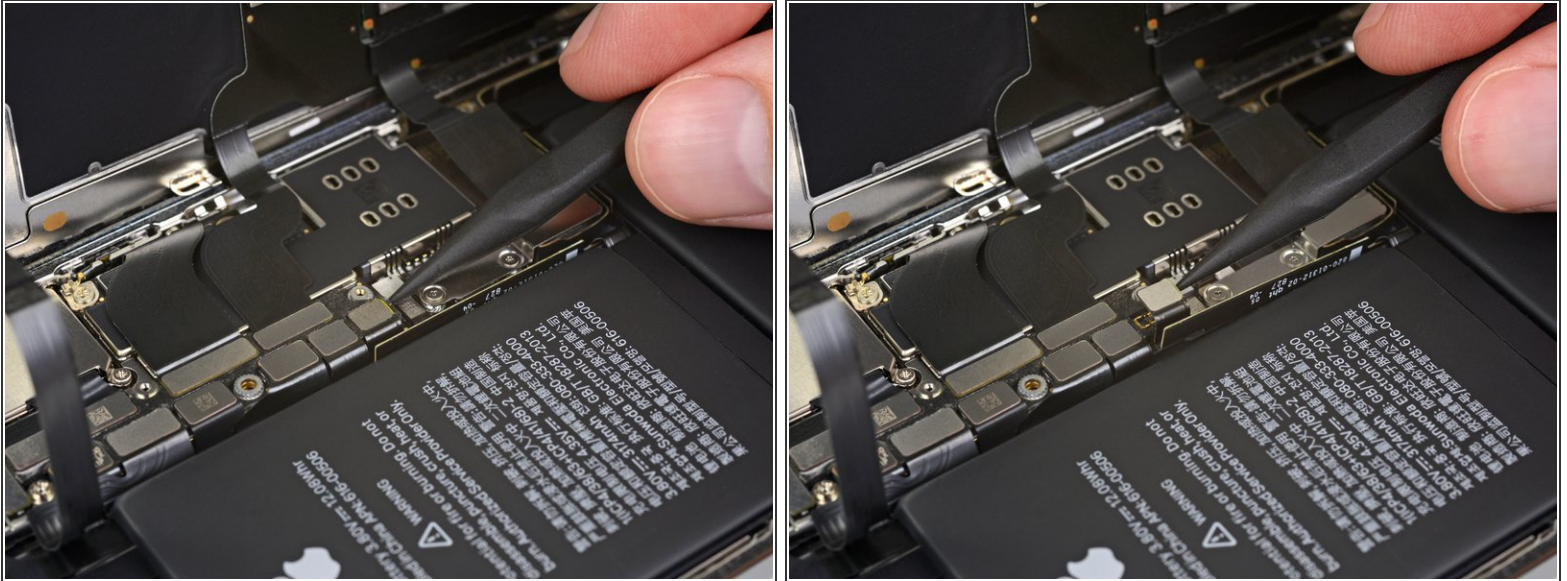
**i** Throughout this repair, [keep track of each screw](#) and make sure it goes back exactly where it came from to avoid damaging your iPhone.

## Step 2



- Remove the bracket.
- ⓘ The bracket may be lightly adhered in place. Lift gently but firmly to separate it.
- ★ During reassembly, this is a good point to power on your iPhone and test all functions before you seal the display in place. Be sure to power your iPhone back down completely before you continue working.

## Step 3



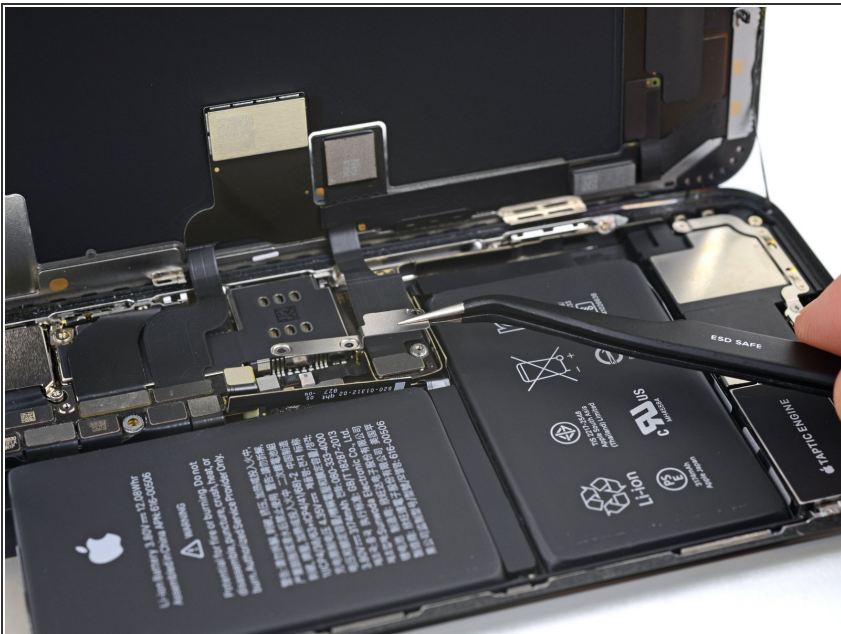
- Use a spudger or a clean fingernail to pry the battery connector up from its socket on the logic board.
- ⓘ Try not to damage the black silicone seal surrounding this and other board connections. These seals provide extra protection against water and dust intrusion.
- Bend the connector slightly away from the logic board to prevent it from accidentally making contact with the socket and providing power to the phone during your repair.

## Step 4



- Remove the three Y000 screws securing the display connector bracket:
  - Two 1.5 mm screws
  - One 1.1 mm screw

## Step 5



- Remove the bracket.

## Step 6



- Use the point of a spudger or a fingernail to disconnect the front panel sensor assembly connector.

## Step 7



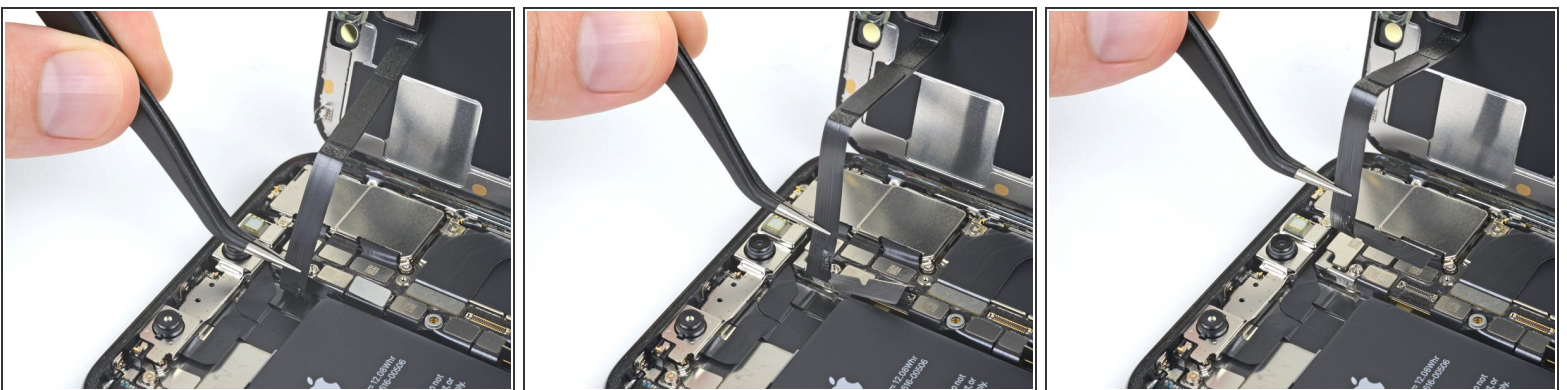
- Use a spudger or a fingernail to disconnect the OLED panel cable connector.
- ✦ To re-attach [press connectors](#) like this one, carefully align and press down on one side until it clicks into place, then repeat on the other side. Do not press down on the middle. If the connector is misaligned, the pins can bend, causing permanent damage.

## Step 8



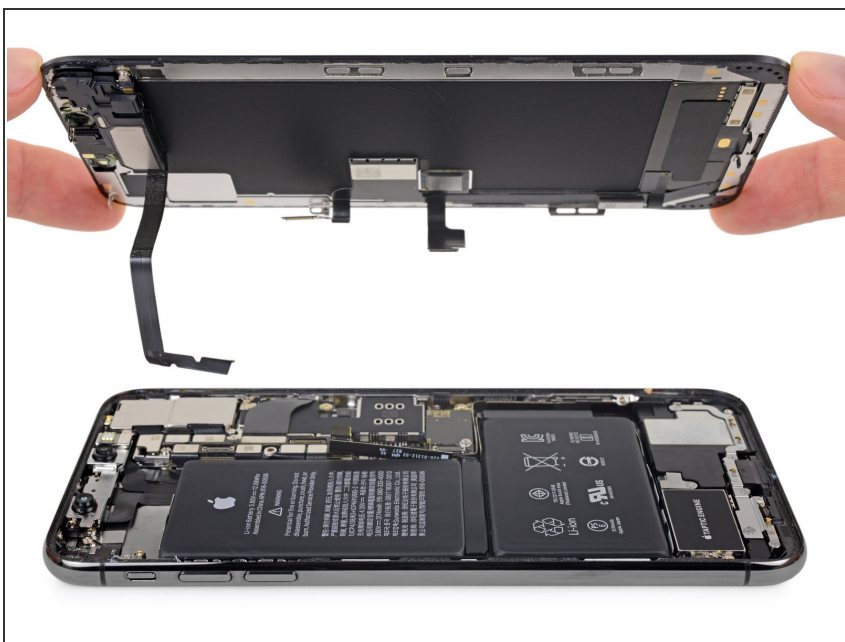
- Use a spudger or fingernail to pry the digitizer cable connector up from its socket.
- ☑ If any part of your screen doesn't respond to touch after your repair, disconnect the battery and then re-seat this connector, making sure it clicks fully into place and that there's no dust or other obstruction in the socket.

## Step 9



- ① The front panel sensor assembly flex cable is lightly adhered in place.
- Carefully lift the cable until the adhesive separates.

## Step 10



- Remove the display assembly.
- ★ During reassembly, pause here if you wish to [replace the waterproof adhesive around the edges of the display](#).

To reassemble your device, follow these instructions in reverse order.