



Kambrook 600W Power Drive Blender Disassembly

Written By: Angel Lin



TOOLS:

64 Bit Driver Kit (1)

Flush Cutter (1)

Step 1 — Kambrook 600W Power Drive Blender Disassembly



- Firstly, take off lid by twisting anti-clockwise.
- Remove the glass jar from the blender base by again twisting anti-clockwise.

Step 2



- The blender blade is attached to a base component at the bottom of the blender jar.
- To remove the blade, simply twist the attachment according to the direction written, in this case, turning anti-clockwise.
- The blade could be then easily taken out from the jar, if difficulties occur at this stage, simply adjust the blade's angle when removing so.

Step 3



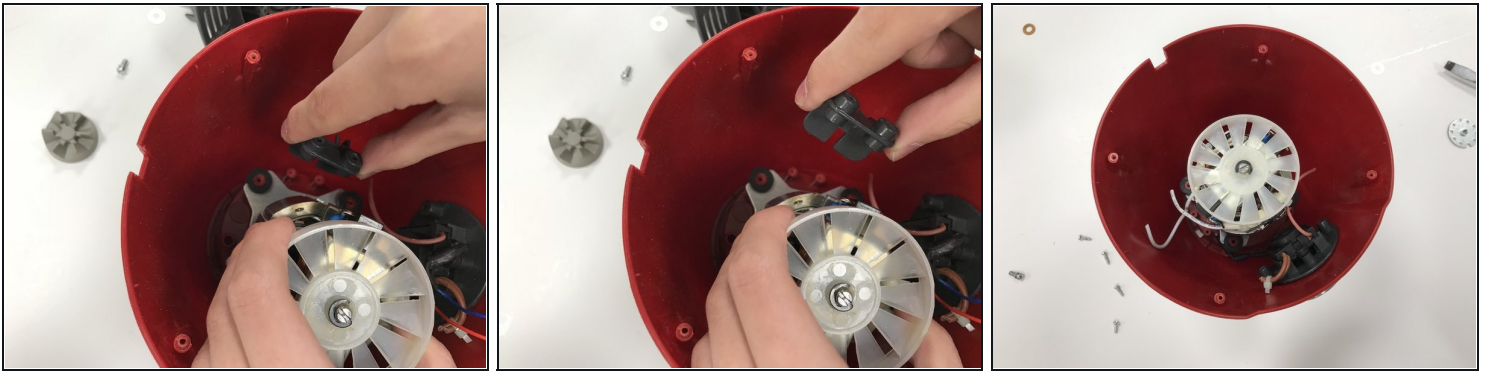
- Remove four screws from the base of the blender
- Take out the ventilation opening from the base. Keep screws aside.

Step 4



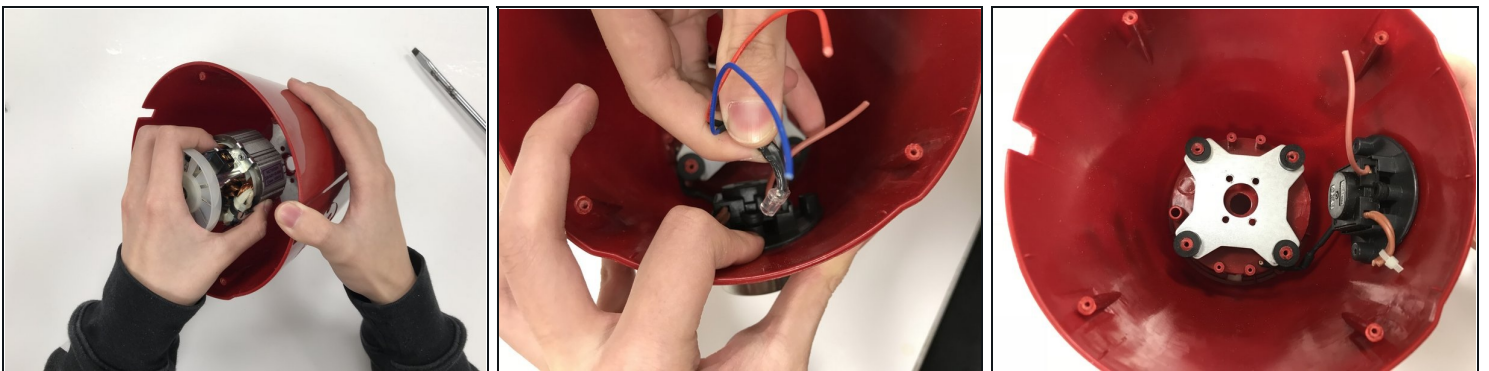
- The clutch is attached to the bottom of the blender. This can be twisted out directly with hand.
- The disk attached inside the clutch can be pulled out after the clutch is removed from the blender bottom.

Step 5



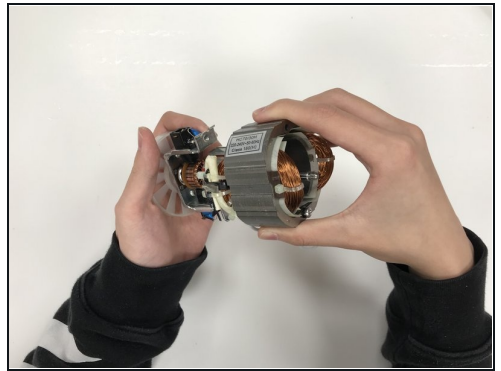
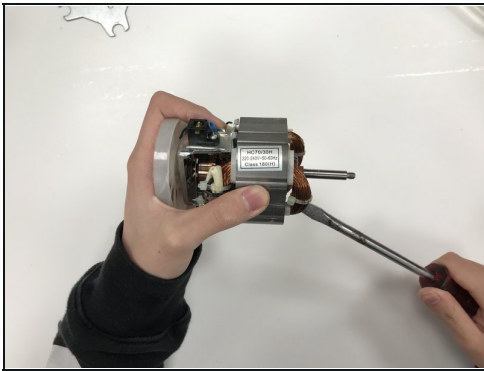
- This little component is used to stabilise wires. It can be taken out after cutting the wires.

Step 6



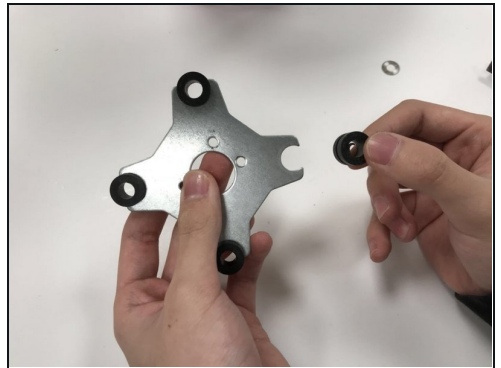
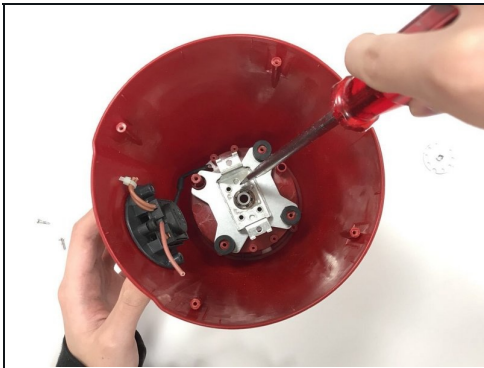
- Lift out the major electronic part of the blender.
- Cut off two pieces of wires, then take out the mini light bulb.
- This is how the blender base should look like at the moment.

Step 7



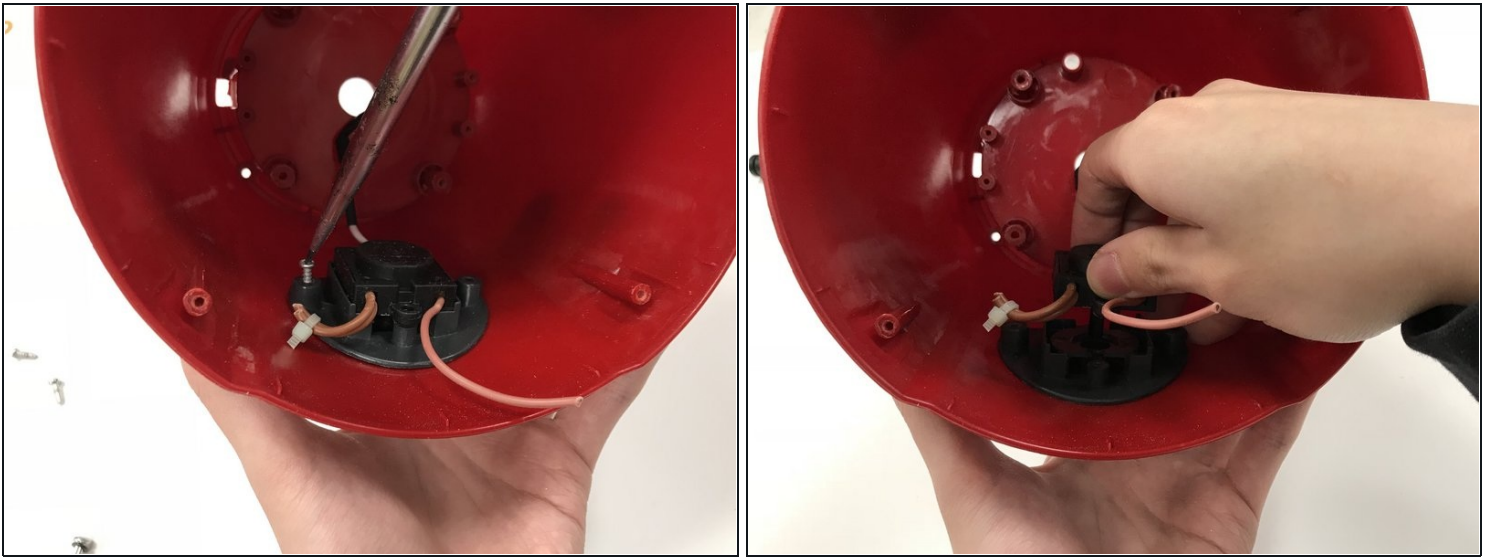
- Unscrew the two screws from both sides of the clasp to detach all component, this includes the motor of the blender

Step 8



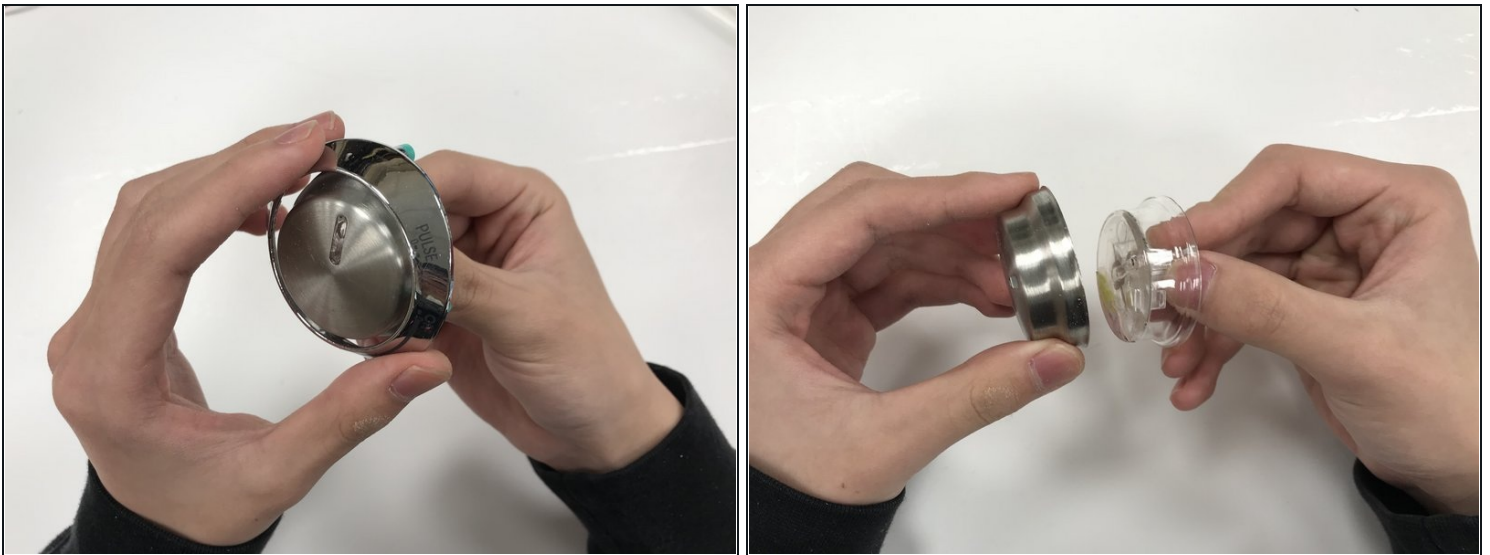
- Insert wisdom here.

Step 9



- To take out the back of the of blender speed dial, unscrew two screws that are located opposite each other.

Step 10



- After taking out the back of the speed dial, the dial will fall out itself.
- There are three individual pieces that make up the speed dial: the ring, the metal and plastic casting.

Step 11



- The final disassembly, with all the blender parts and screws, will look like this.

To reassemble your device, follow these instructions in reverse order.