



Toshiba Satellite CL15t-B1204X Hard Drive Replacement

This guide will walk users through finding and removing their hard drive so it can be replaced.

Written By: Royce Alexander Porter





TOOLS:

- [Phillips #0 Screwdriver](#) (1)
- [Spudger](#) (1)



PARTS:

- [250 GB SSD](#) (1)
- [500 GB SSD](#) (1)
- [1 TB SSD](#) (1)
- [2 TB SSD](#) (1)

Step 1 — Battery



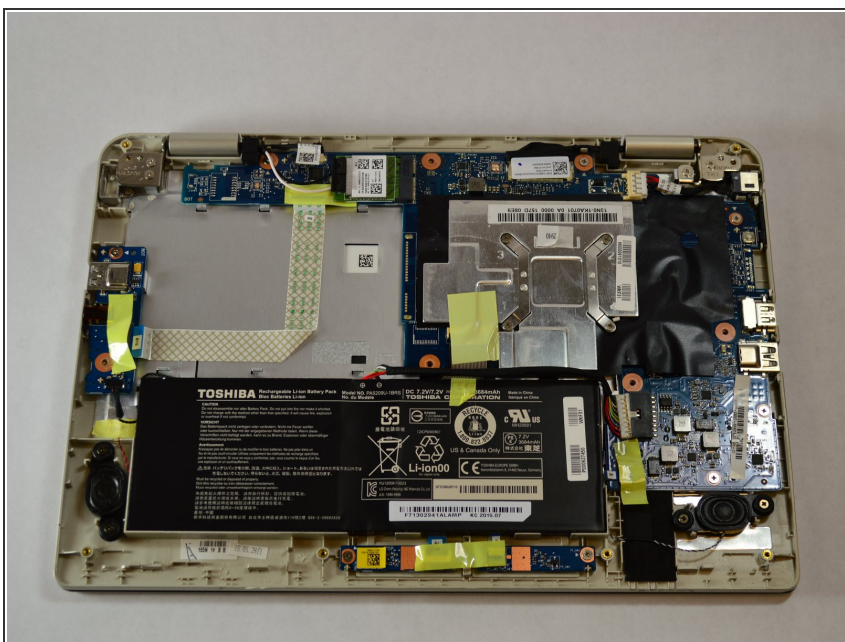
- Flip the laptop over so the bottom of the device is facing upward.

Step 2



- Unscrew the 10 5mm Phillips screws, located on the bottom side of the notebook using the PH1 bit and the Magnetic Driver.

Step 3



- Pry open the bottom cover of the notebook with the plastic spudger tools. Slide a thin tool along the edges without ports to pop open the latches.

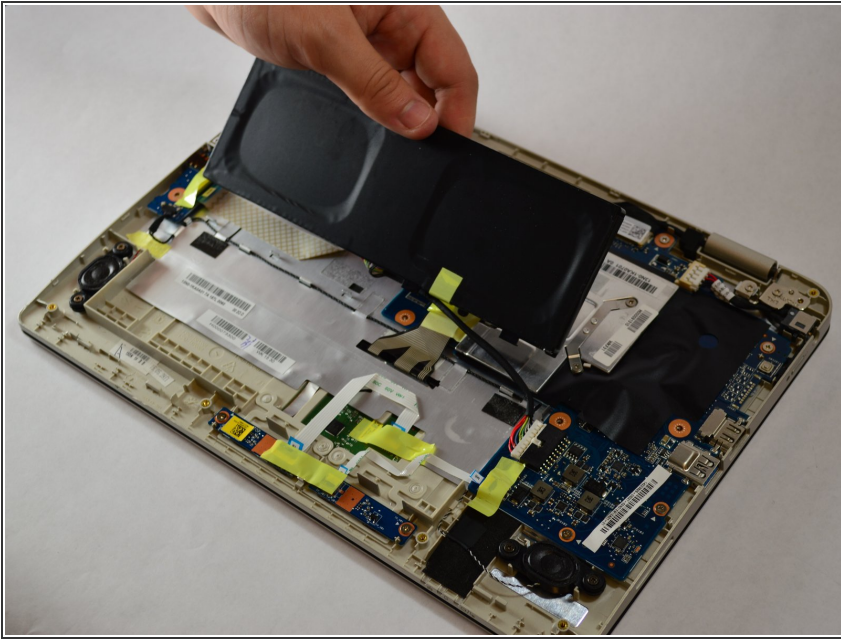
⚠ Be careful not to bend or crack the plastic back cover.

Step 4



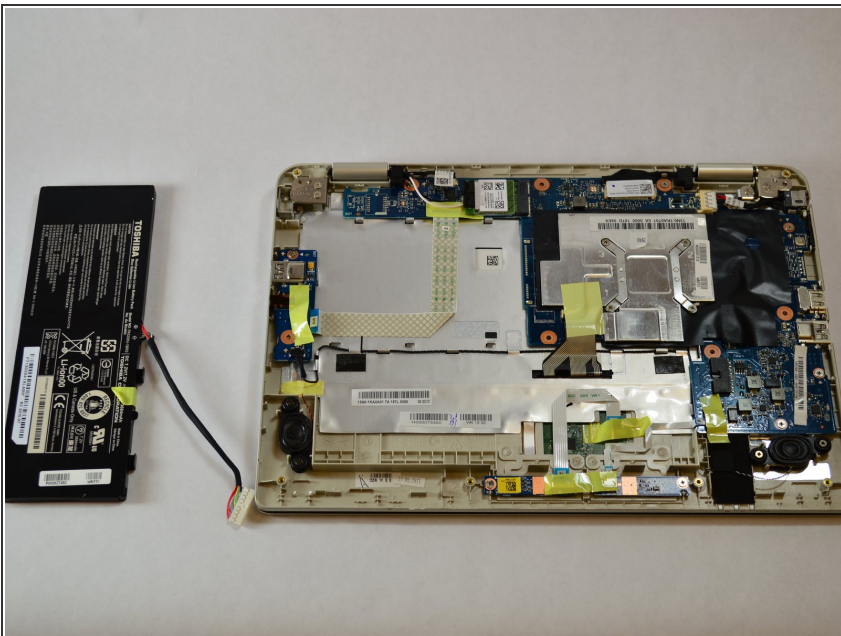
- Remove the 1" yellow tape on top of the battery. This piece of tape is holding down the battery connection cable.

Step 5



- Lightly grip the battery on the two longest sides. Gently pull up until the adhesive on the notebook is separated from the battery.

Step 6



- Carefully unplug the battery from the device motherboard.

Step 7 — Hard Drive



- Carefully unplug the cable near the USB on the left side.

Step 8



- Delicately pull on the hard drive and the case it's in to unplug it from the motherboard.

Step 9



- Peel the rubber casing around the hard drive off to completely remove the drive.

To reassemble your device, follow these instructions in reverse order.