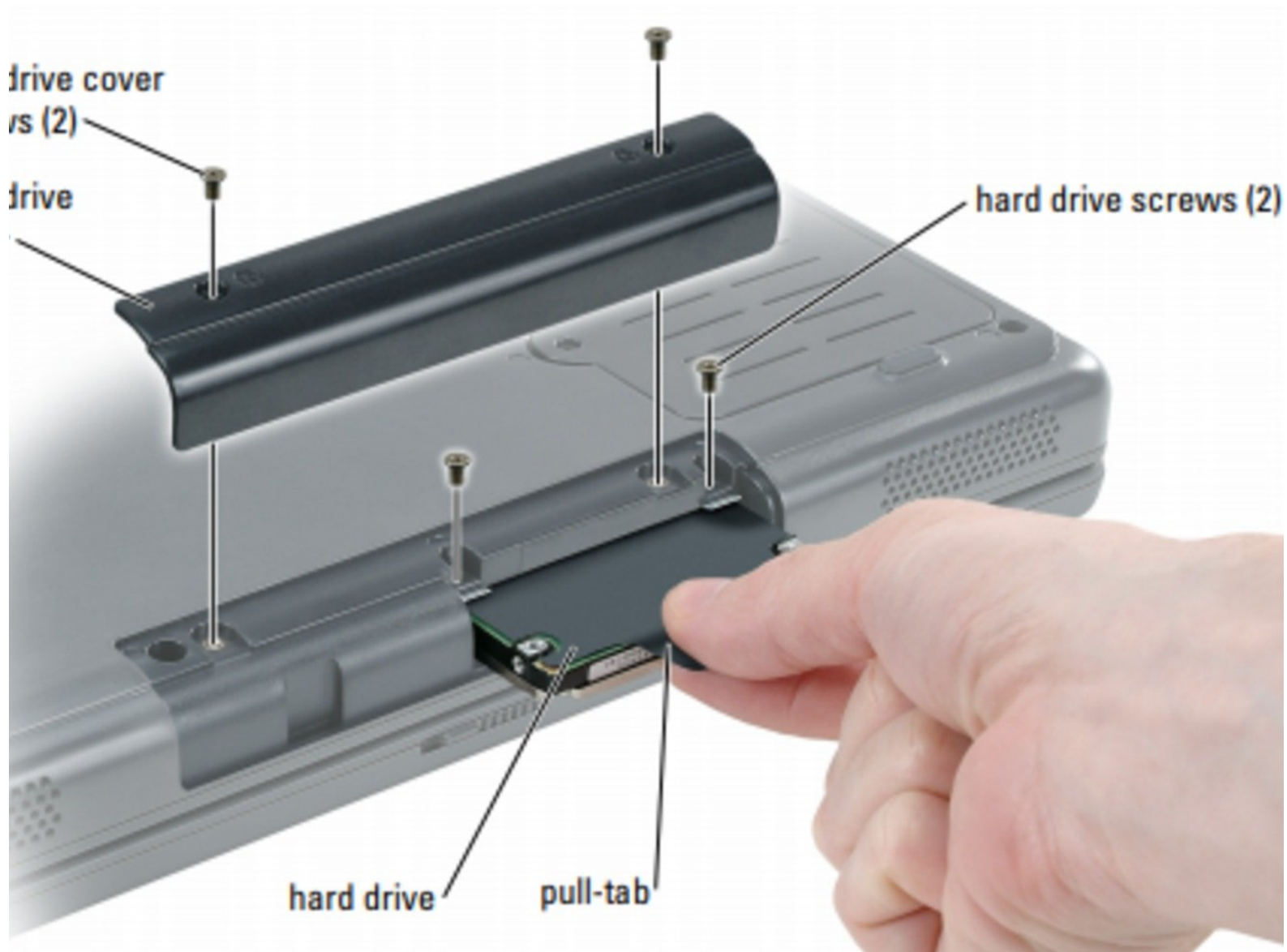




# Dell Inspiron 1000 Hard-Drive Replacement

How to remove and replace a hard-drive

Written By: darrius

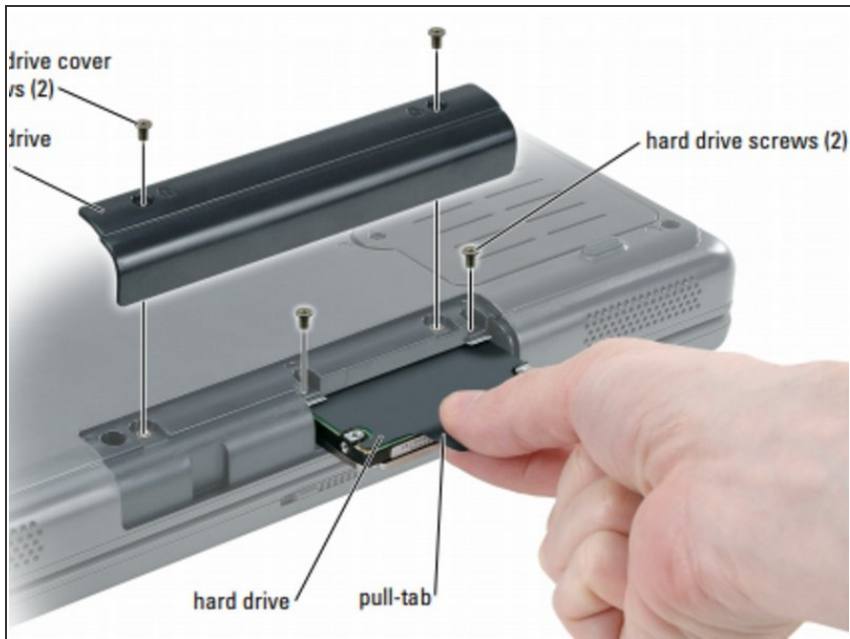




## TOOLS:

- [Phillips #0 Screwdriver](#) (1)
-

## Step 1 — Warning Safety Precautions

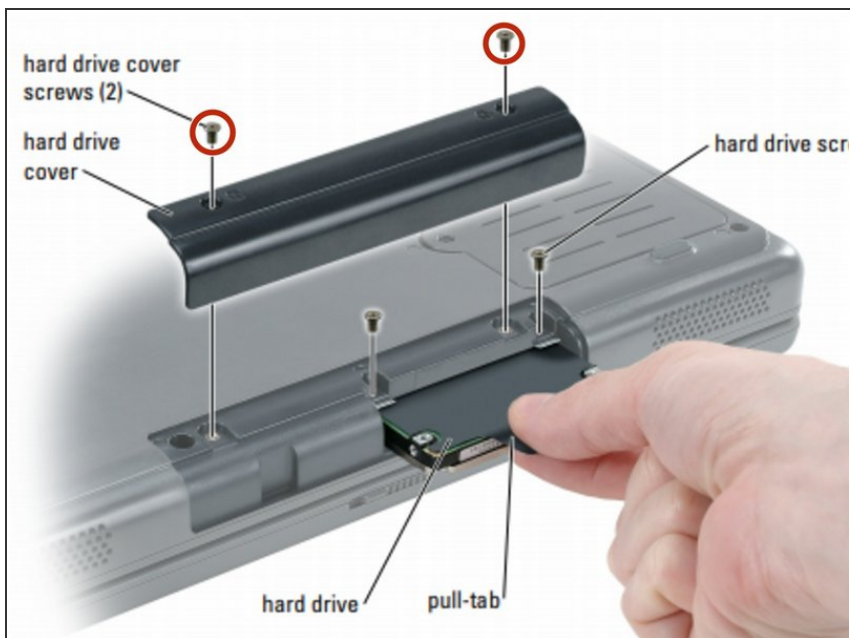


**⚠ Before Working Inside Your Computer**

- Use the following safety guidelines to help protect your computer from potential damage and to help ensure your own personal safety.

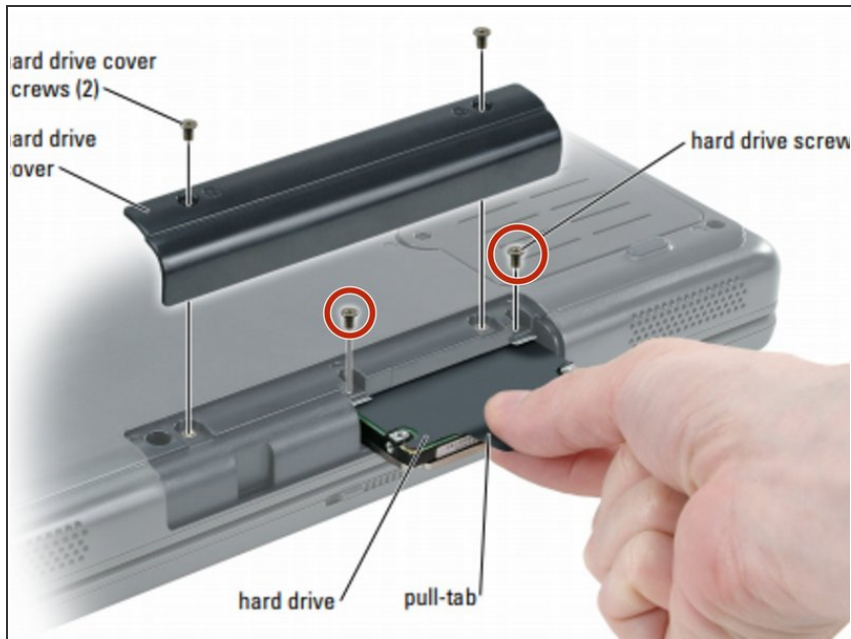
**⚠ CAUTION:** Before you begin any of the procedures in this section, follow the safety instructions in the Product Information Guide..

## Step 2 — Removing The Two Screws



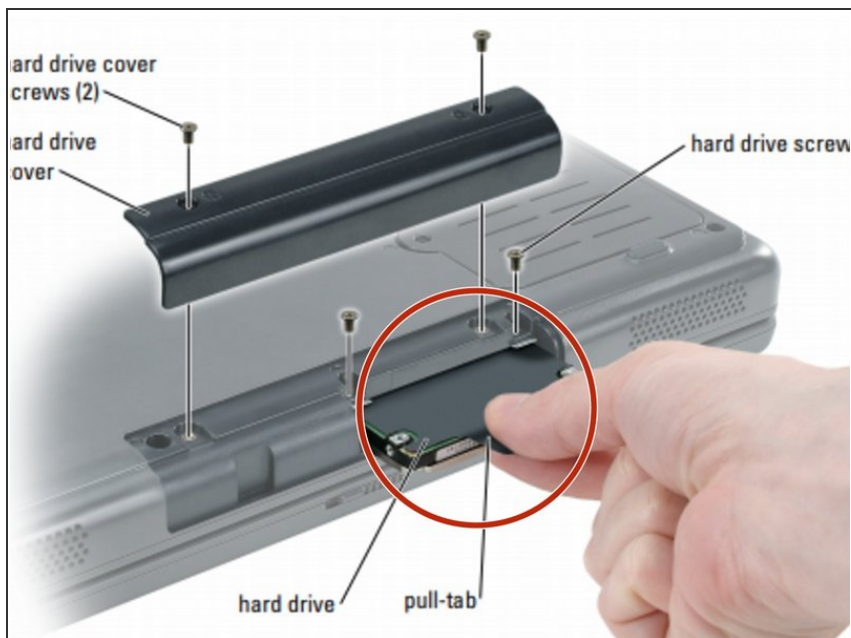
- Turn the computer over and remove the hard drive cover screws, the cover, and the hard drive screws.

### Step 3 — Removing The Two Screws



- Removing the two screws from the hard-drive.

### Step 4 — Removing The Hard-Drive



- Slide the hard drive out of the computer.

Insert the new hard drive and reassemble.