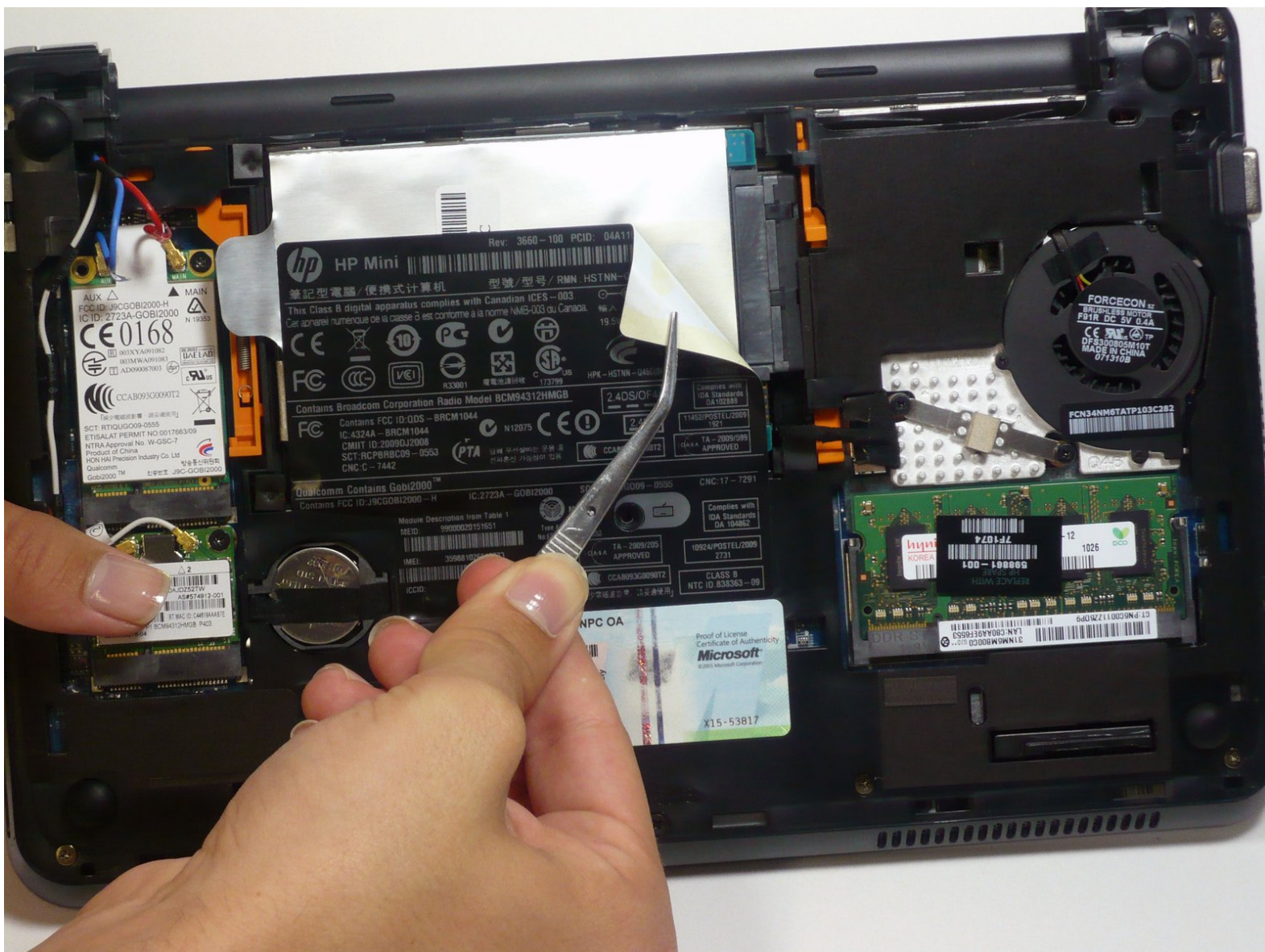




# HP Mini 210 Hard Drive Replacement

Replace your hard drive so it will function properly.

Written By: Heather Freed



## INTRODUCTION

If the hard drive makes scratching or whining noises, or if the operating system does not boot due to a disk read error, you may need to replace it.

The hard drive contains operating system files and your personal files. If you intend to replace the hard drive, save any personal files you need later onto an alternative media source before completing these steps. You will need to install an operating system on the new hard drive once the new hard drive is installed on the netbook.



### TOOLS:

- [Spudger](#) (1)
  - [Tweezers](#) (1)
- (optional)*
- [iFixit Opening Tools](#) (1)
-

## Step 1 — Battery



- i** Turn off and unplug the netbook before replacing the battery.

  - Hold the netbook top-side down with the lid closed.
  - Slide the plastic battery release latches towards the lock symbols.
- i** The left tab unlocks completely, but you will need to hold the right tab towards the lock symbol as you remove the battery.

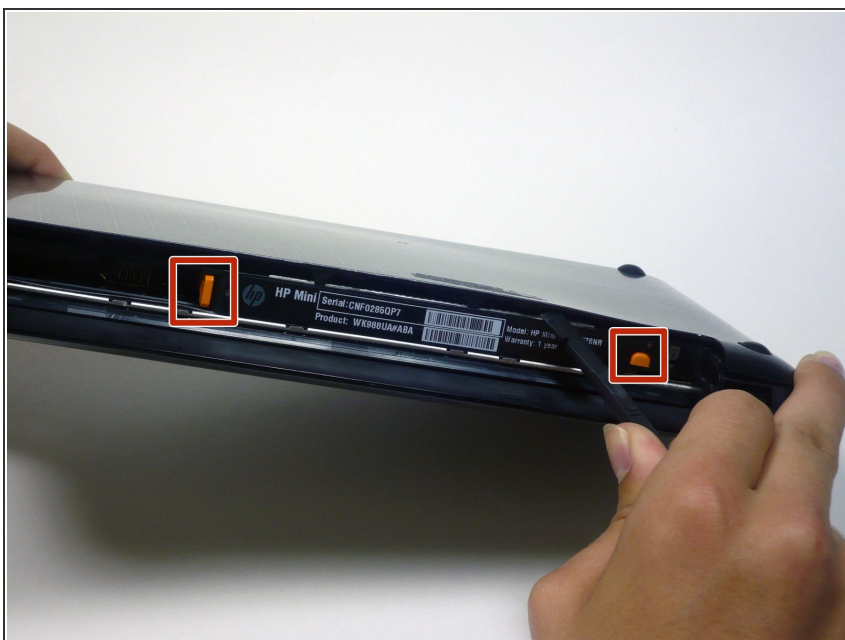


## Step 2



- Slide the battery out from the netbook.

## Step 3 — Disassembling HP Mini 210 Back Case



- Turn the netbook to view its edge.
- Press both orange eject buttons simultaneously, and use a spudger to pry off the back case.

## Step 4



- If the back case does not separate from the netbook easily, use the spudger to pry off the back case by the edge near the battery compartment, and work your way to the sides. The case will then pivot along the front edge.

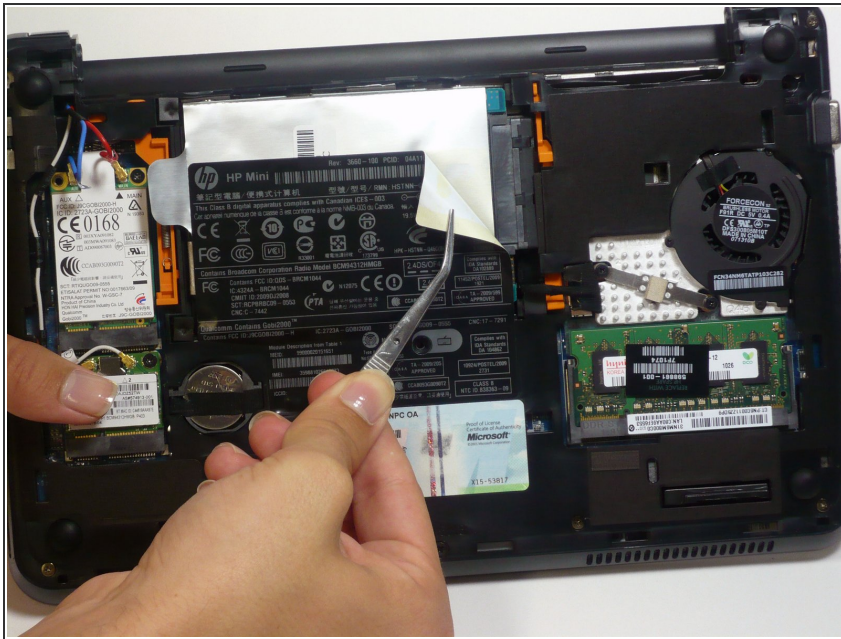
## Step 5



- Pull the back case off from the front edge.

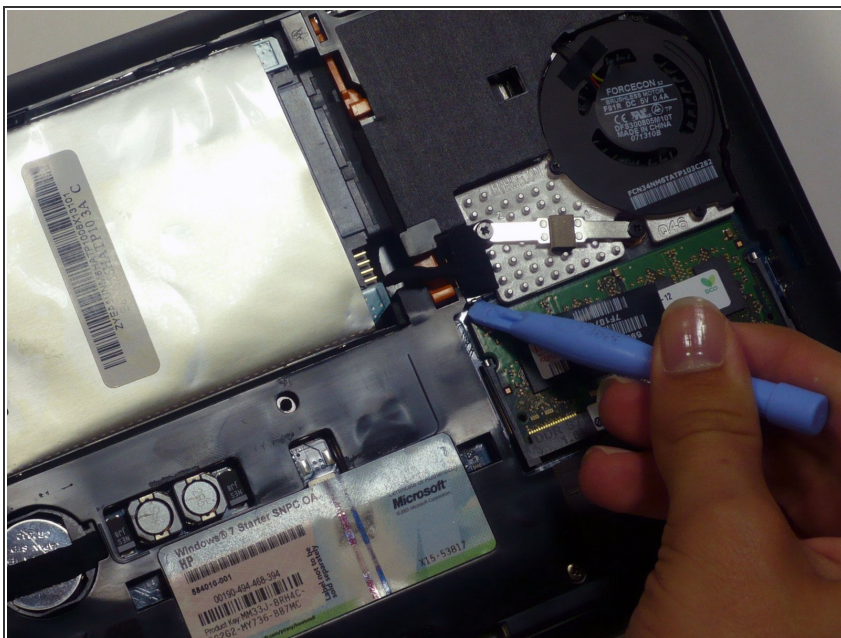


## Step 6 — Hard Drive



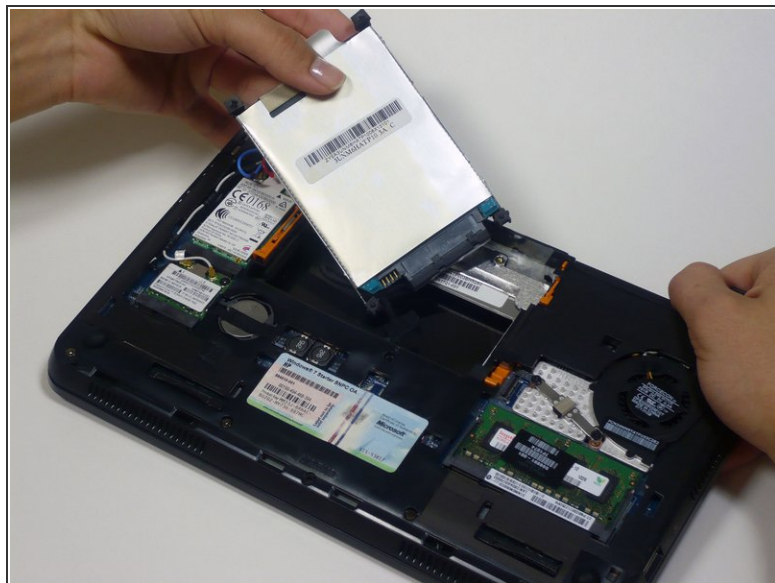
- Peel back the black sticker covering the hard drive with tweezers or your fingers.

## Step 7



- Use a plastic opening tool to carefully disconnect the hard drive connector found above the RAM slot.

## Step 8



- Pull the silver plastic tab up and remove the hard drive. The tab may also be black.
- ⓘ Be aware of the 4 foam cushions on each corner of the hard drive as they may become loose during removal.

To reassemble your device, follow these instructions in reverse order.