



HP Chromebox J5N50UT WLAN Module Replacement

The WLAN module for this Chromebox is labeled Atheros Model: AR5B22. This guide will take you through the steps of replacing the WLAN Module.

Written By: Ashley Marvin



This document was generated on 2020-11-28 06:57:17 AM (MST).

INTRODUCTION

If the WLAN Module of your HP Chromebox is damaged, it is easy to replace. This guide will take you through the steps of replacing the WLAN module. For this guide, you will need the Philips #1 screwdriver.



TOOLS:

- [Metal Spudger](#) (1)
 - [Magnetic Project Mat](#) (1)
 - [Phillips #1 Screwdriver](#) (1)
 - [Spudger](#) (1)
-

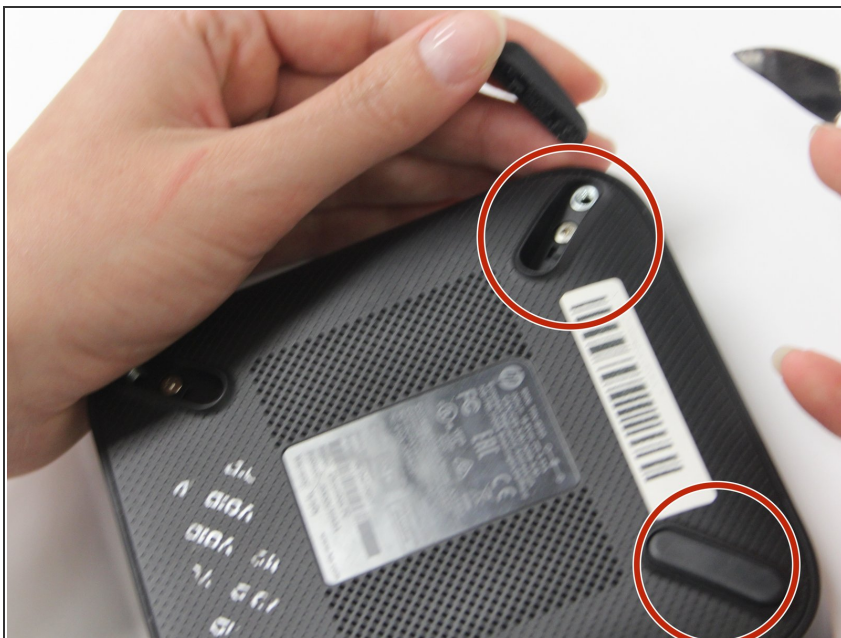
Step 1 — Bottom Cover



⚠ Before removing the bottom cover, ensure that your computer is powered down and ensure that all external devices are disconnected. If you are unsure whether the computer is off or in hibernation mode, turn the computer on, then shut it down through the operating system.

- Position the device upside-down on a flat, level surface with the USB ports facing you.

Step 2



- Using your metal spudger, lift and remove the 4 rubber “feet” from each corner.

Step 3



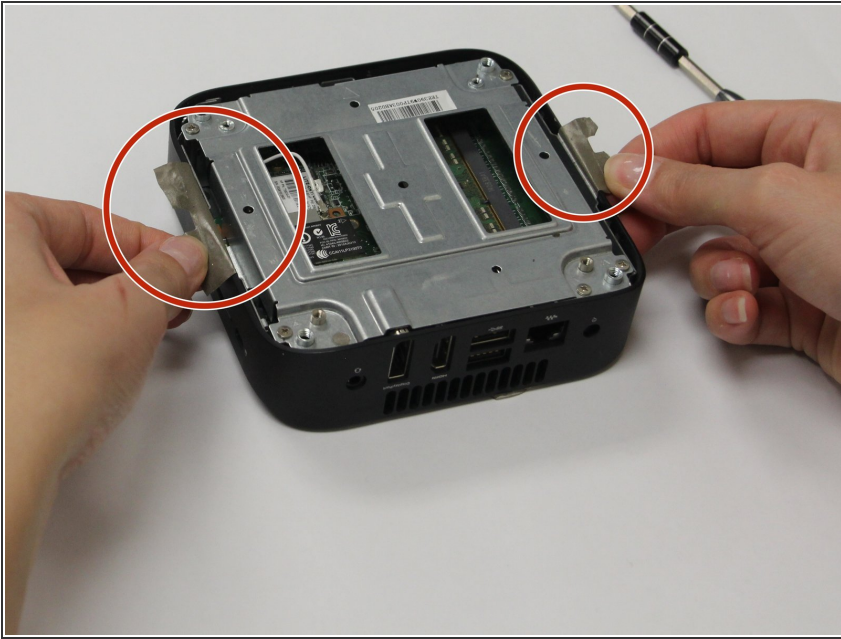
- Using your Phillips head screwdriver, remove the four Phillips M2.5×4.0 screws that secure the bottom cover to the computer. In this step the usage of the magnetic mat will be helpful to keep up with the screws.

Step 4



- Insert the flat end of your metal spudger under the bottom cover near the USB ports, then pry the bottom cover off the computer.

Step 5 — Bottom Shield



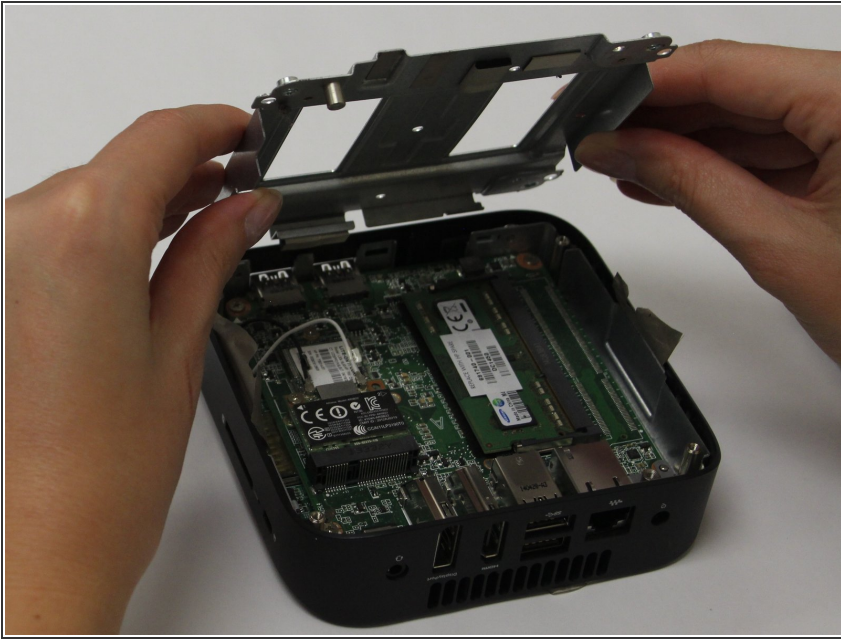
- Lift the two pieces of mylar tape from the bracket.

Step 6



- Using your Phillips #1 screwdriver, remove the four Phillips M2.5x4.0 screws that hold the shield in place.

Step 7



- Insert your spudger into the gap between the bottom shield and the ports and gently pry to lift and remove the shield.

Step 8 — WLAN Module




- Disconnect the white and black antenna cables from the module.

Step 9



- Using your Phillips #1 screwdriver, remove the M2.0×3.0 screw from the upper left corner of the module.

 Once the screw has been removed, the module will tilt up.

Step 10



- Remove the WLAN module by pulling it away from the slot at an angle.

To reassemble your device, follow these instructions in reverse order.