



DJI Mavic Pro GPS Module Replacement

How to replace the GPS Module on a DJI Mavic Pro M1P.

Written By: Kyle Kelser



INTRODUCTION

This set of instructions will walk you through the removal process of the DJI Mavic Pro GPS Module. You will first need to remove the battery and then the upper shell before you can get to the GPS Module. Be aware when going through the removal of the module that you may hear a popping sound; don't be alarmed as this is normal.



TOOLS:

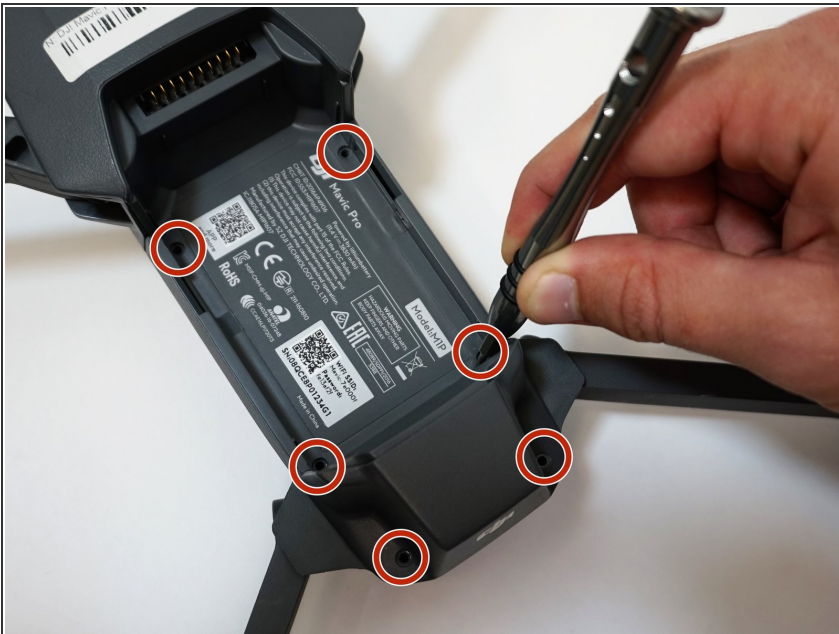
- [Spudger](#) (1)
 - [1.5mm Hex Screwdriver](#) (1)
 - [Tweezers](#) (1)
 - [JIS #00 Screwdriver](#) (1)
-

Step 1 — Battery



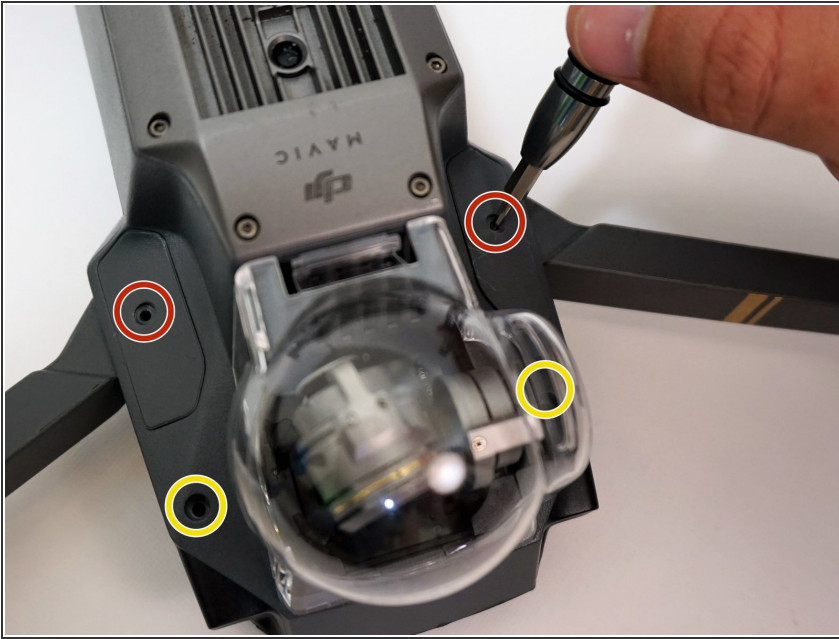
- Grab both sides of the battery.
- Pinch the releasing buttons on both sides of the battery.
- Lift the battery up and out.

Step 2 — Upper Shell



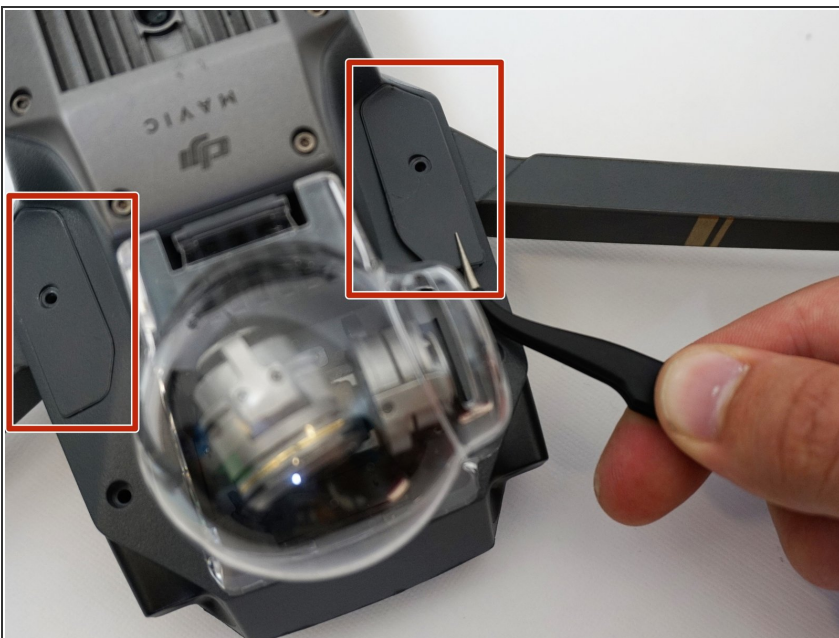
- Remove the six 5mm 1.5 Hex screws by turning the screwdriver counterclockwise.

Step 3



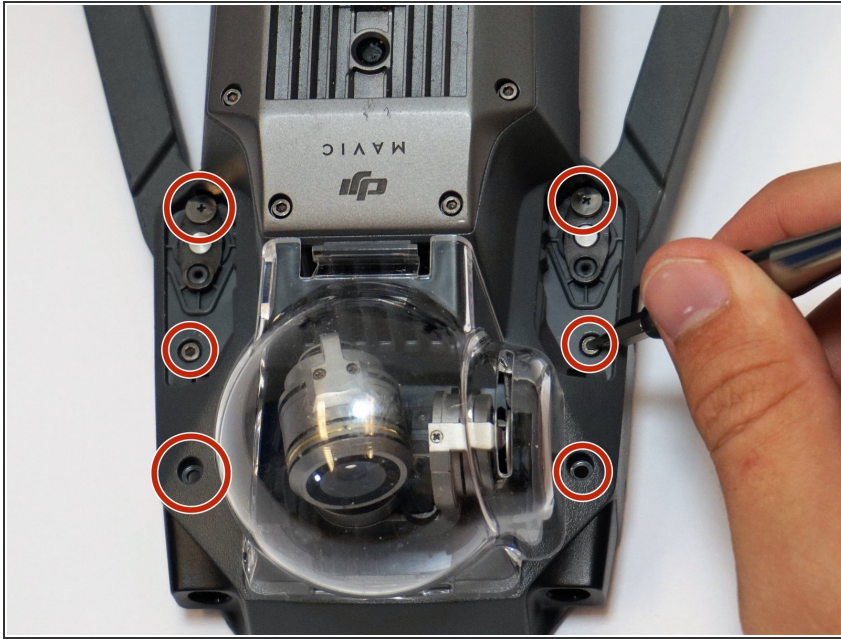
- Flip the drone over so that the gimbal is facing up.
- Remove the two 4mm 1.5 Hex screws near the gimbal case by turning the screwdriver counterclockwise.
- Remove the two 5mm 1.5 Hex screws near the gimbal case by turning the screwdriver counterclockwise.

Step 4



- Remove the two small panel pieces near the gimbal case with the tweezers.

Step 5



- Remove the six 5mm 1.5 Hex screws that are under the panel pieces by turning the screwdriver counterclockwise.

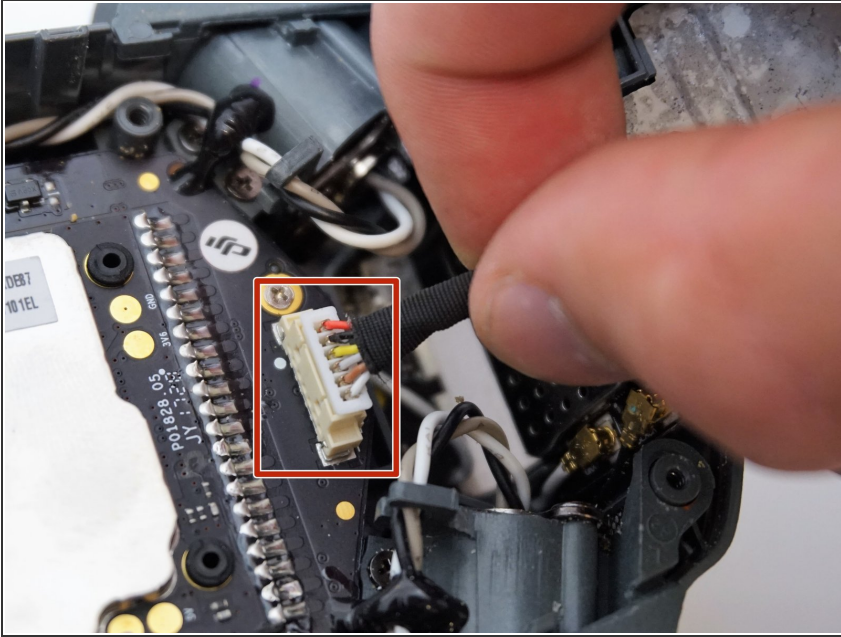
Step 6



- Flip the drone back over so the upper shell is facing up.
- Pry off the upper shell with a nylon spudger.

⚠ Be careful when prying with the spudger because you could damage the upper shell's plastic tabs.

Step 7



- Remove the white connector at the back of the flight controller board by gently pulling at the base.

Step 8 — GPS Module



- Flip the upper shell over so the metallic plate is facing up.
- Remove the two 5mm JIS #00 screws from the metallic plate by turning the screwdriver counterclockwise.
- ⓘ If the JIS #00 screwdriver is too small, you may need to use a JIS #0 screwdriver.

Step 9



- Pry the metallic plate up from the upper shell by using a nylon spudger.
- Remove the metallic plate from the upper shell by lifting the plate up and out.
- ⓘ You may hear a popping sound when prying the metallic plate, but no damage will occur.

Step 10



- Use tweezers to remove the GPS Module from the upper shell.

To reassemble your device, follow these instructions in reverse order.