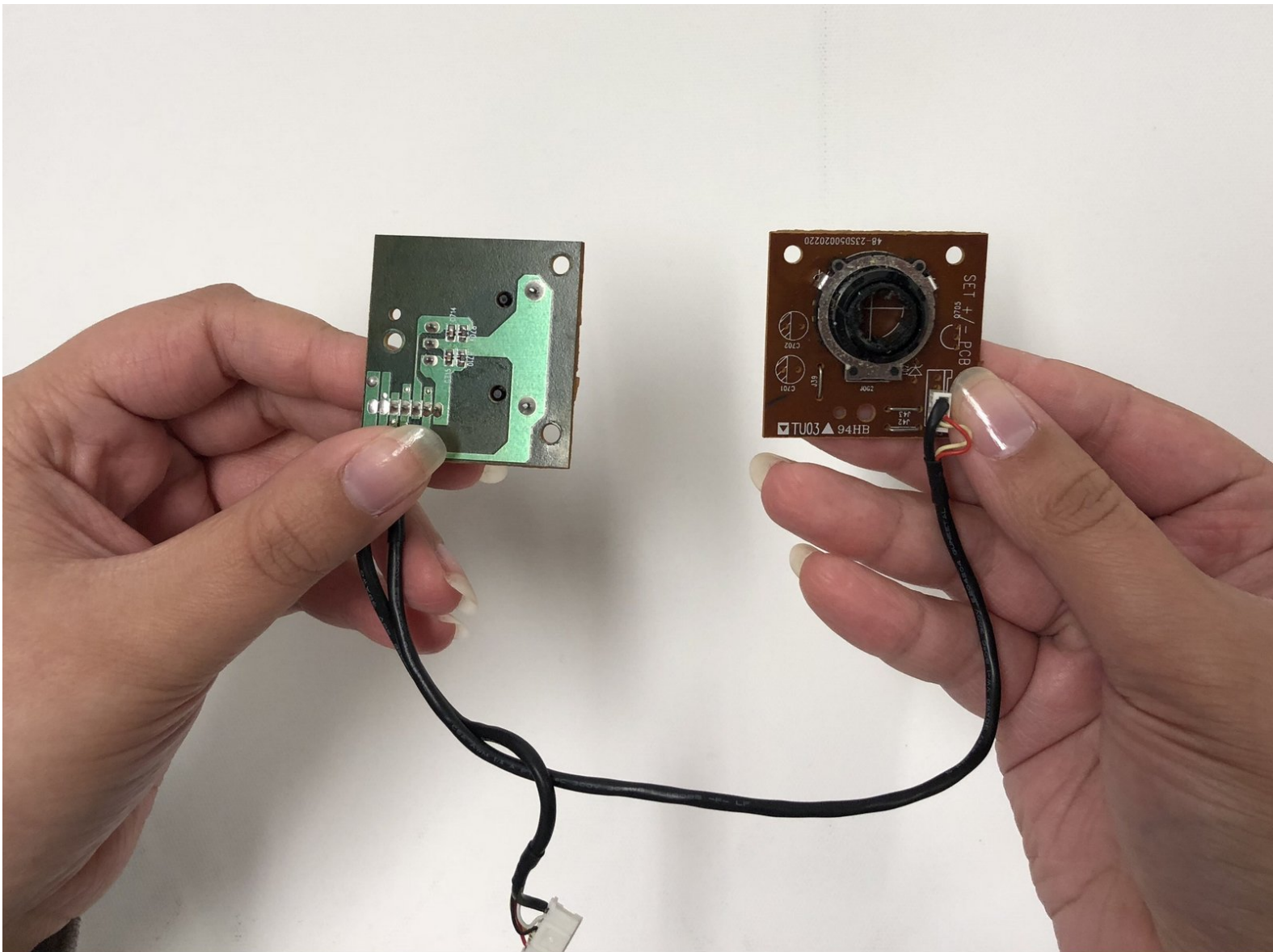




iHome iH3L Scroll Wheel Circuit Board Replacement

How to replace the circuit board for the scroll wheels if they are unresponsive and will not respond to touch.

Written By: Brittany Holloway



INTRODUCTION

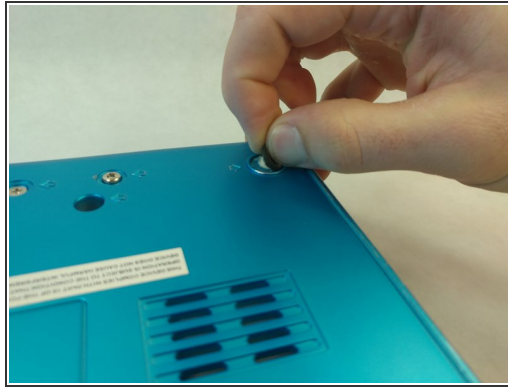
The scroll wheels are on the top left and right side of the iHome. The right side scroll wheel control the "set +/-" and the left side scroll wheel controls the "volume". If they do not respond, the circuit board could be corroded or broken.



TOOLS:

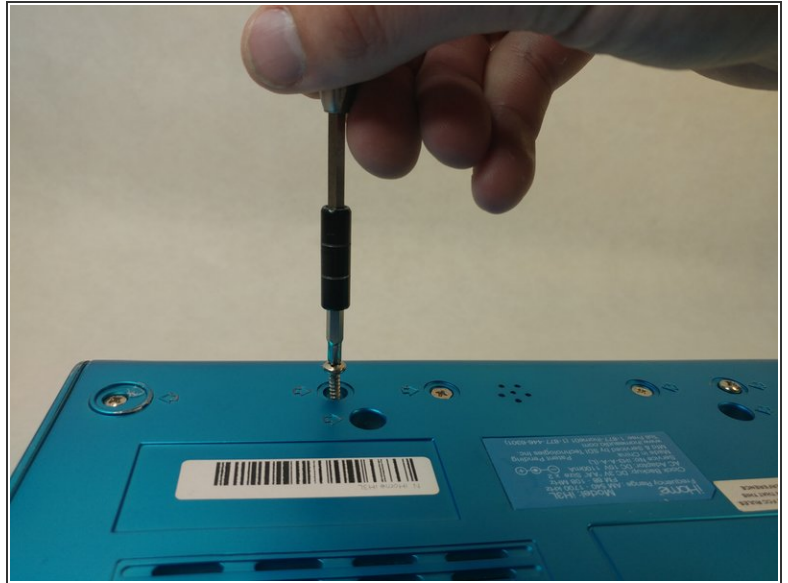
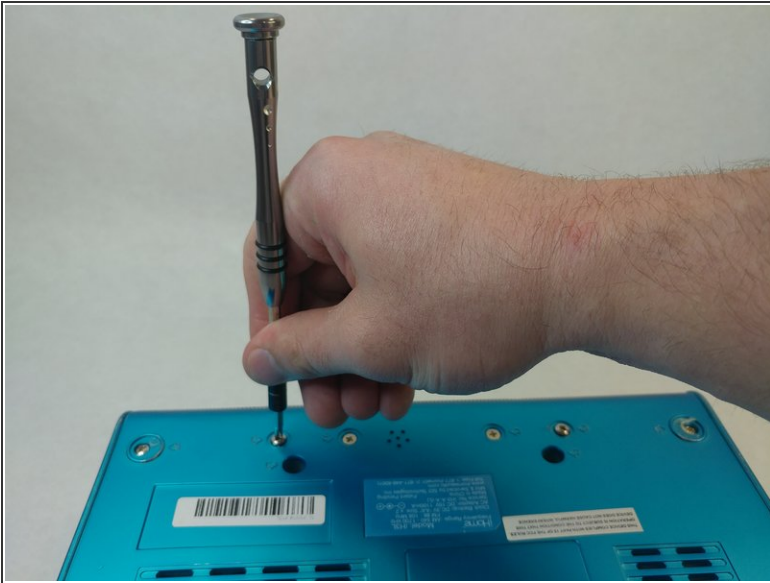
- [Phillips #2 Screwdriver](#) (1)
-

Step 1 — Speakers



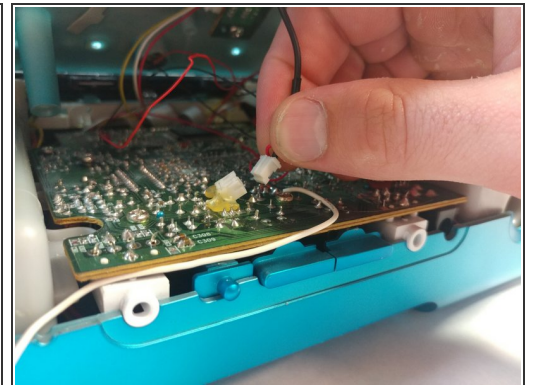
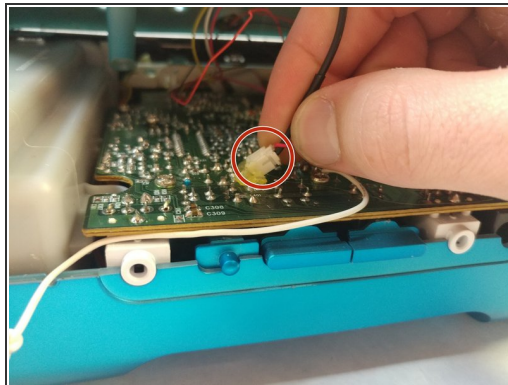
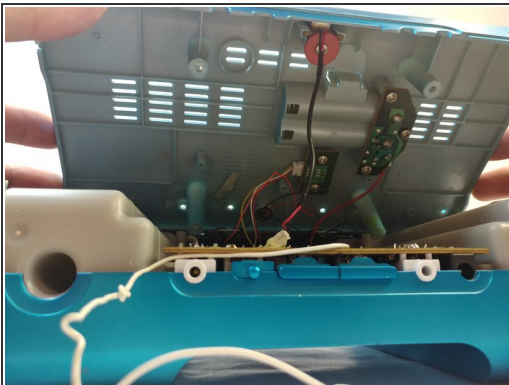
- Locate all screws on the back of the iHome. Each screw can be located by the arrows on the iHome.
 - Two Countersunk 9.7 mm Phillips #2 screws in the middle.
 - Two 15.9 mm Phillips #2 screws.
 - Six 13.9 mm Phillips #2 screws.
- Some screws are located under the black sticky pads. Gently remove the black sticky pads and it will expose the screws.
- Two 11.8 mm Phillips #2 screws.

Step 2



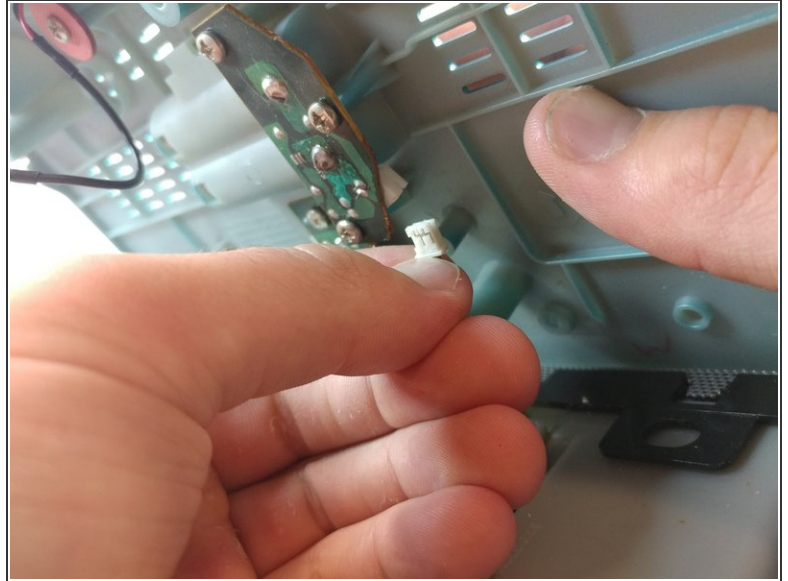
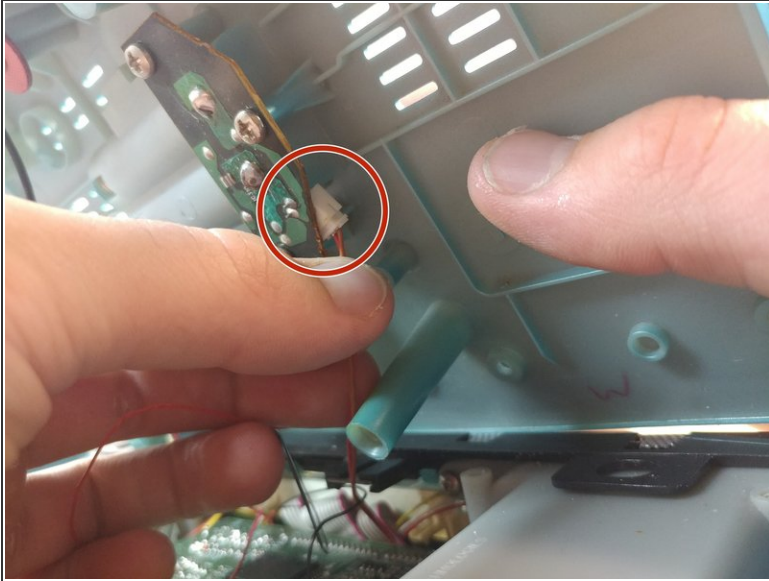
- Remove all screws indicated in the previous step.

Step 3



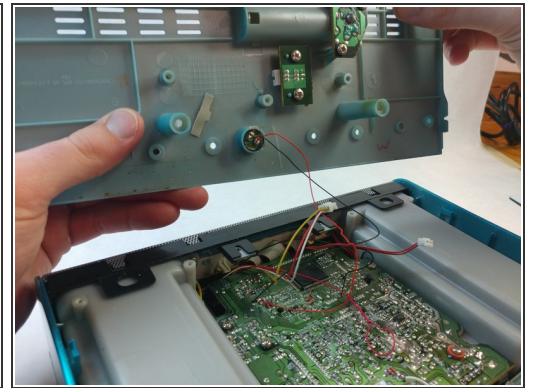
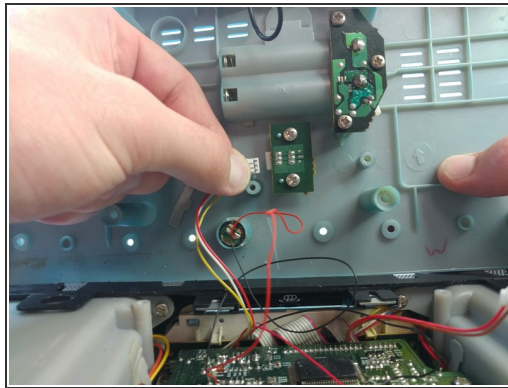
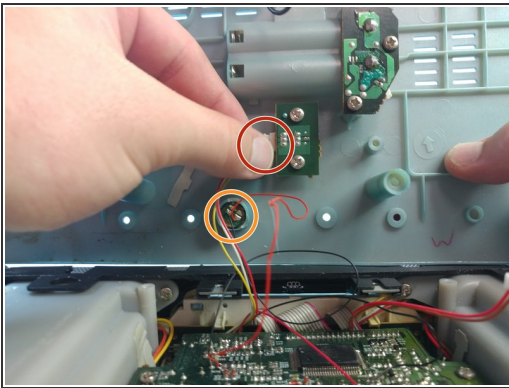
- Slowly tilt the bottom cover of the iHome up.
- ⚠ Do not yank the cover off, there is a wire connecting the cover to the circuit board.
- Disconnect the wire just by pulling on the connector gently.

Step 4



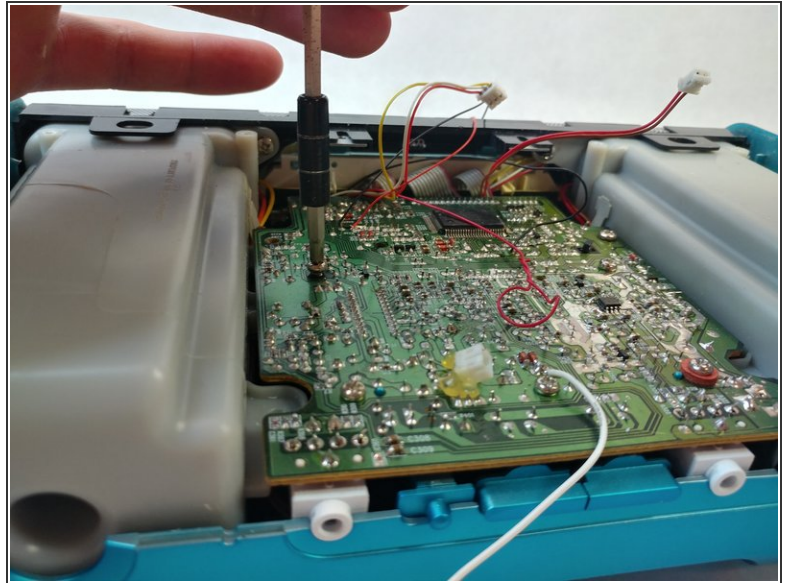
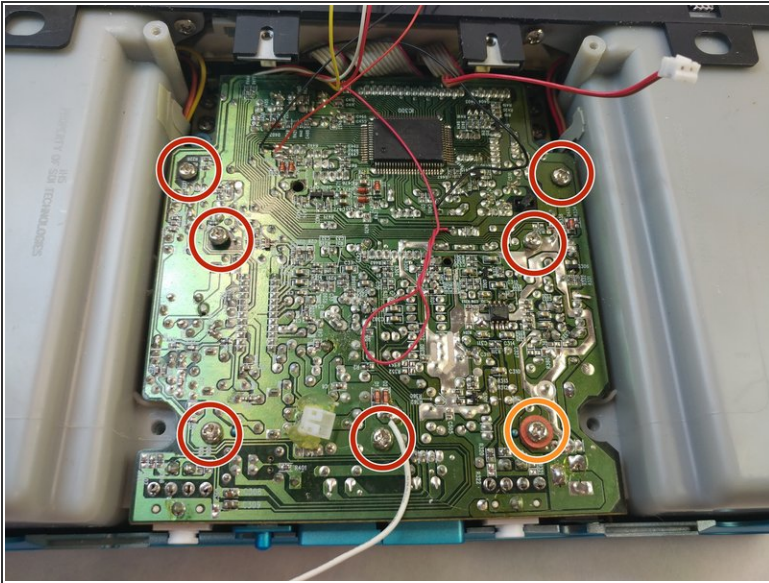
- Disconnect the next connector pin after slowly opening the lid more.

Step 5



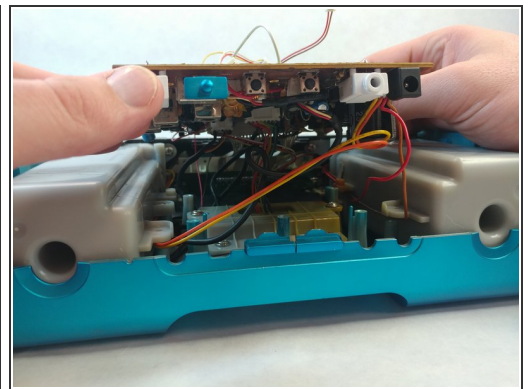
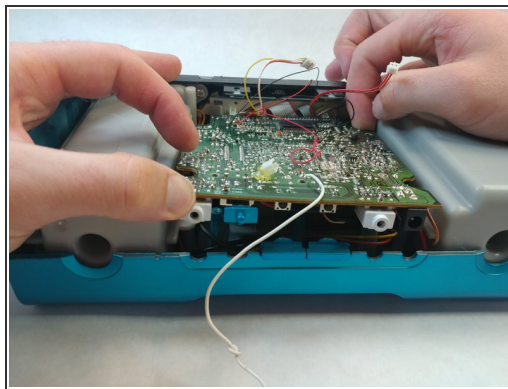
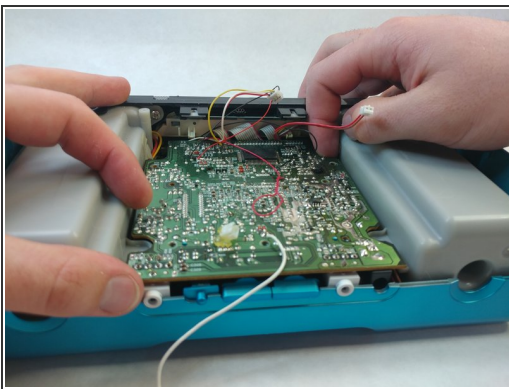
- Disconnect the final connector pin series and carefully set your lid behind the body of the iHome.
- The tiny speaker will not be disconnected for this repair, but you can easily remove it from the lid by means of a paperclip from the outside. While not necessary, this can help prevent damage to your device.

Step 6



- Remove the seven screws that are holding the motherboard in place:
 - Six 14 mm Phillips #2 screws.
 - One 14 mm Phillips #2 screw with two rubber washers on it.

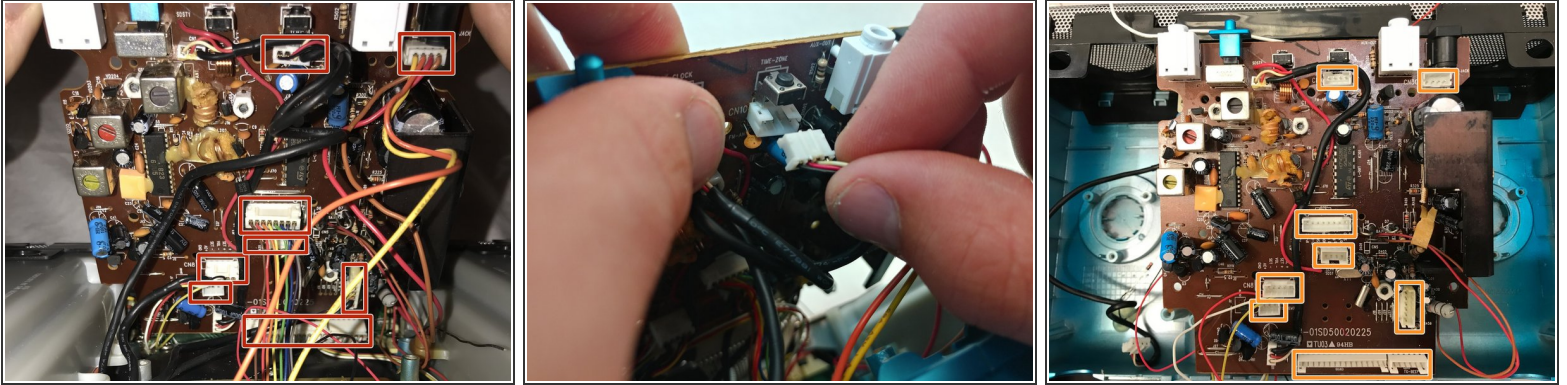
Step 7



- To remove the motherboard, gently lift up from opposite sides.

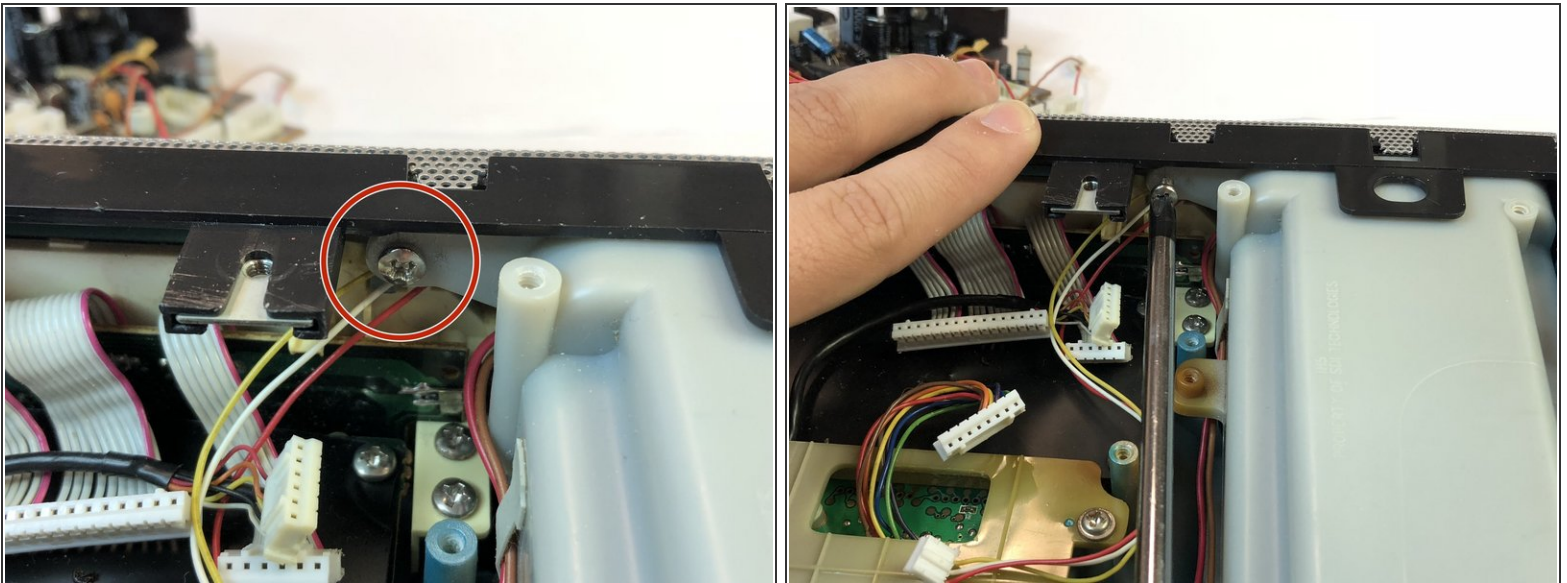
⚠ Be careful when lifting the motherboard. There are wires still connected to it on the backside.

Step 8



- Carefully tilt the motherboard up from the front.
- Disconnect the 8 connections by gently pulling on them. Starting from the front and work your way backwards.
- All 8 connectors disconnected.

Step 9



- Unscrew the screws holding the speakers onto the body. One on each side:
 - Two 14.3 mm Phillips #2 screws.

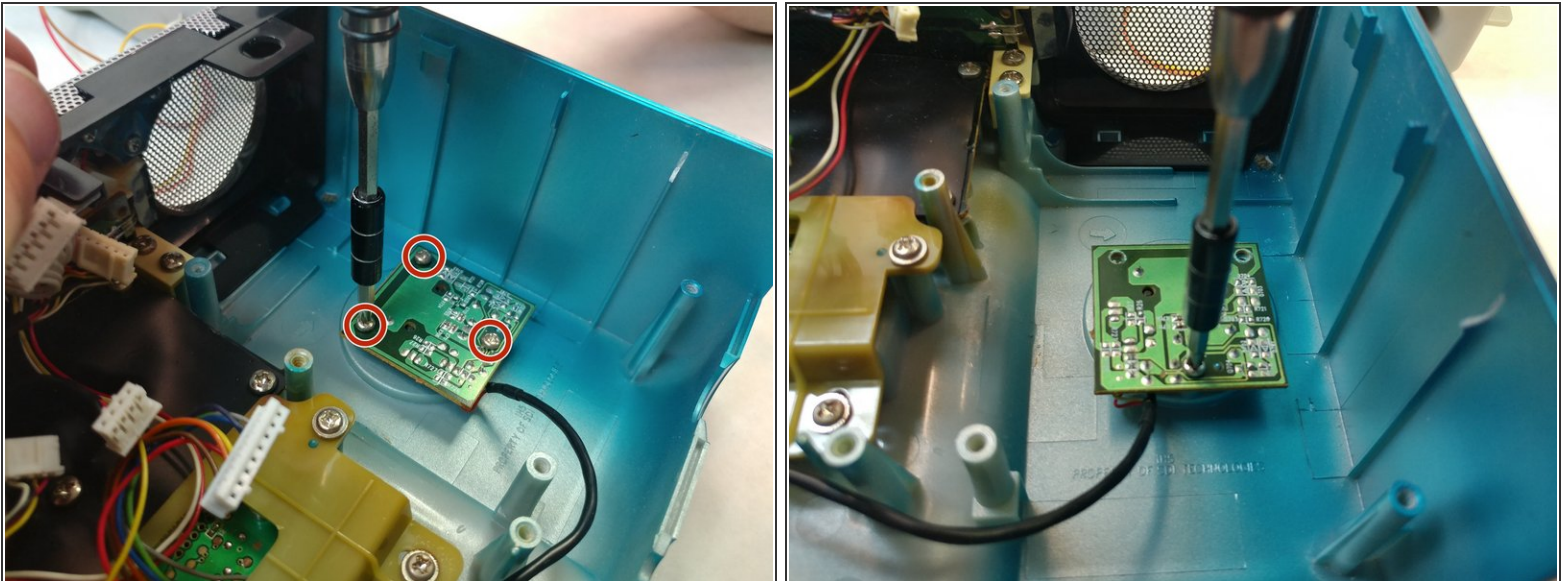
Step 10



- To remove the speakers from the iHome, gently lift up the back of the speaker and pull towards you. These are very secure so minor shaking may help release the speaker.
- Repeat for the other side.

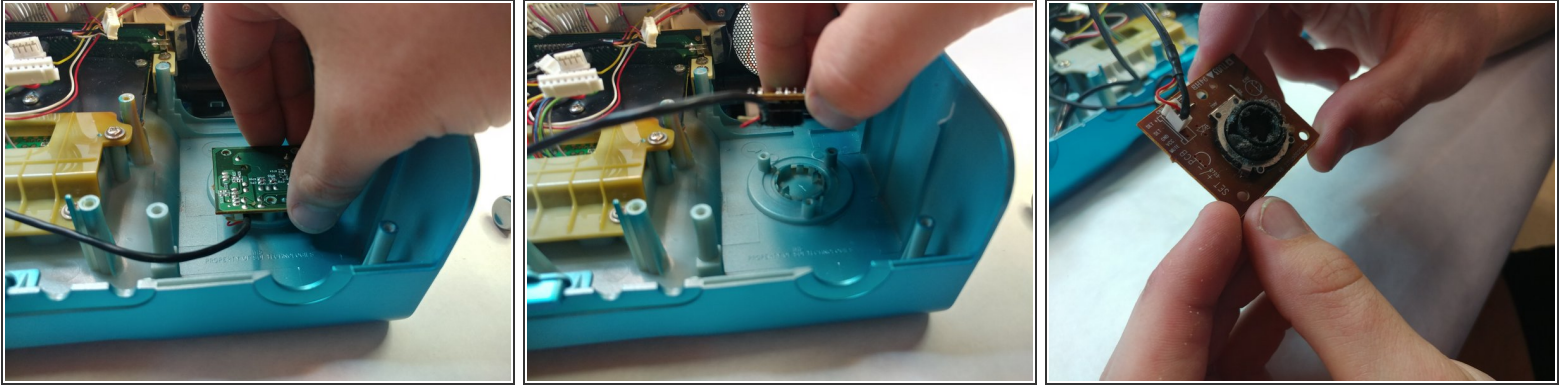
⚠ Be careful yanking on them, the speakers are connected together.

Step 11 — Scroll Wheel Circuit Board



- Remove the three 7.9 mm Phillips #2 screws holding the scroll wheel board down.
- Repeat for the other side.

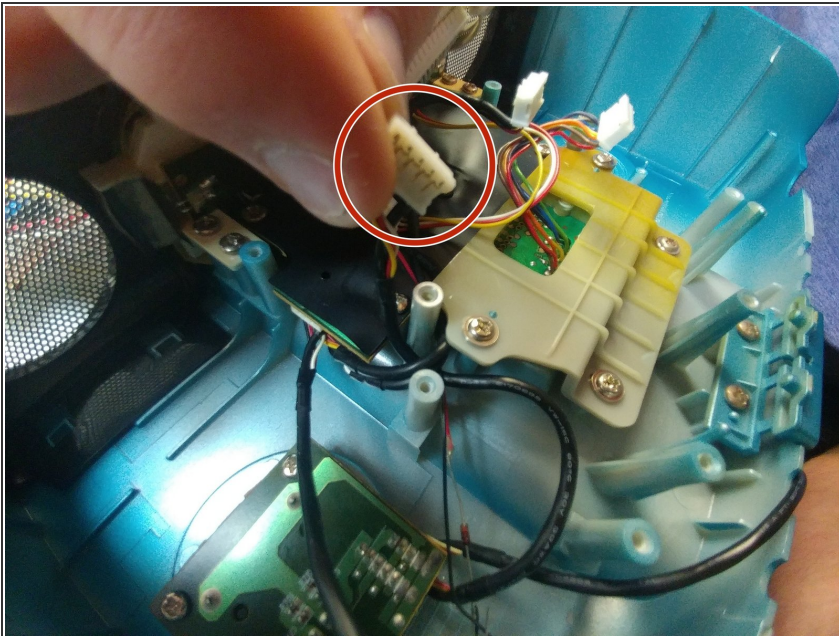
Step 12



- With the screws removed, gently pull the scroll wheel circuit board up.
- Repeat for the other scroll wheel circuit board.

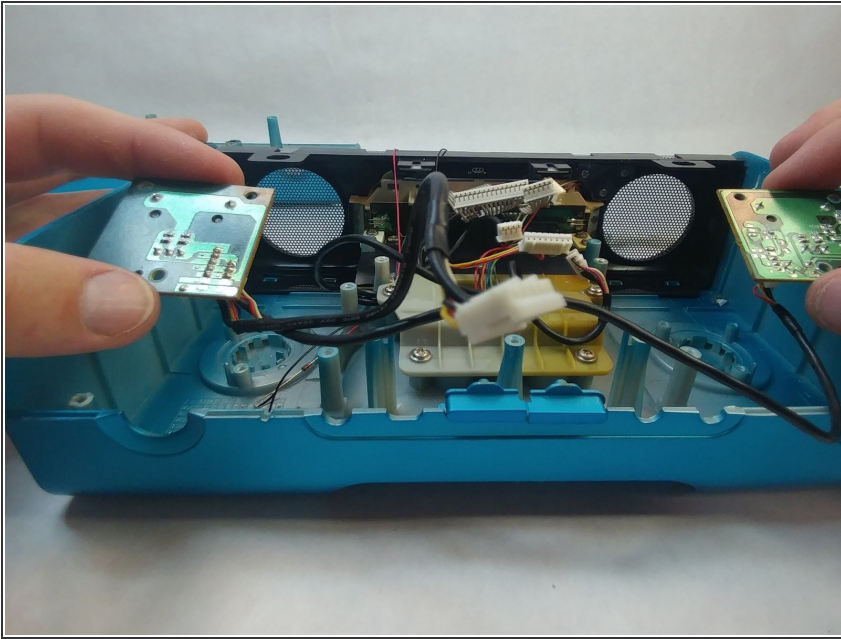
⚠ Do not yank it off, the wire will still be connected to it.

Step 13



- The connector to the scroll wheel has already been disconnected from the motherboard.
- Untangling the wires might be necessary to completely remove it.

Step 14



- You have successfully removed the scroll wheel circuit boards.

To reassemble your device, follow these instructions in reverse order.