



Shark Rotator Powered Lift-Away Speed Roller Brush Replacement

How to change the roller brush on the Shark Rotator Powered Lift-Away Vacuum.

Written By: Sujei Ruano



INTRODUCTION

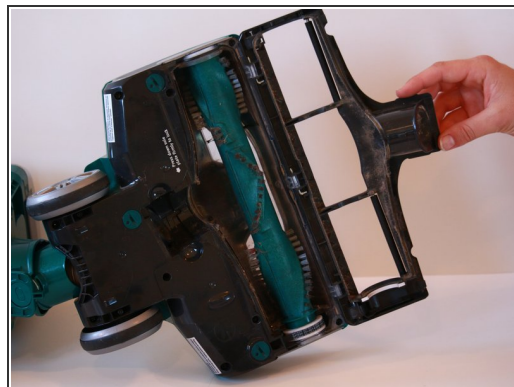
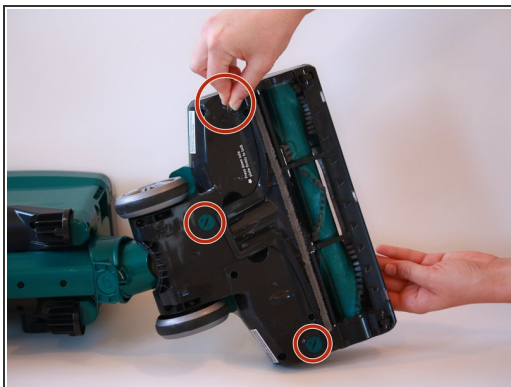
The roller brush can have debris that will cause the vacuum to not work properly. It is important that you always clean your roller brush after every use, so that your Shark Rotator Powered Lift Away Speed Vacuum can perform at it's best. This guide will show you how to change your roller brush if it becomes damaged or is broken.



TOOLS:

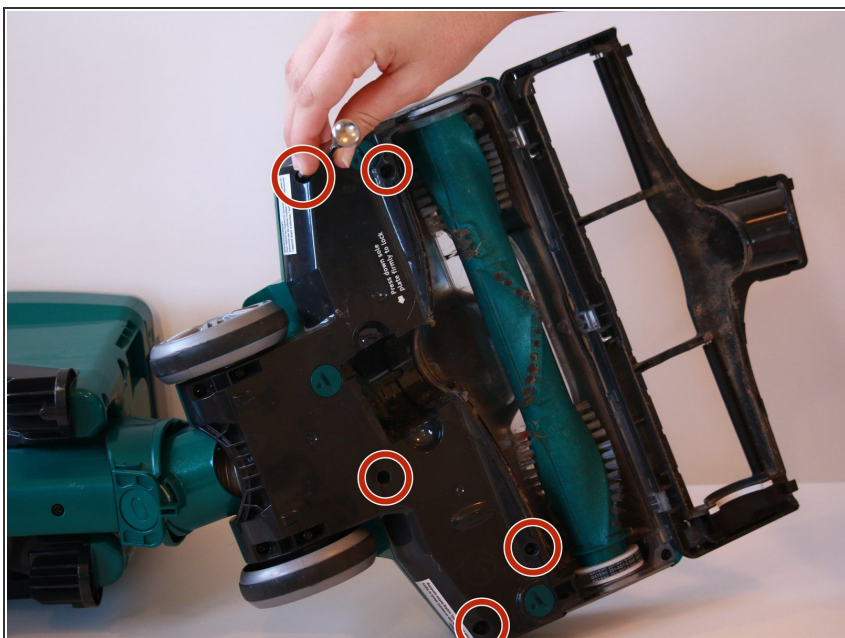
- [T20 Torx Screwdriver](#) (1)
- [Phillips #1 Screwdriver](#) (1)
- [Spudger](#) (1)
- [T10 Torx Screwdriver](#) (1)
- [Phillips #0 Screwdriver](#) (1)

Step 1 — Belt



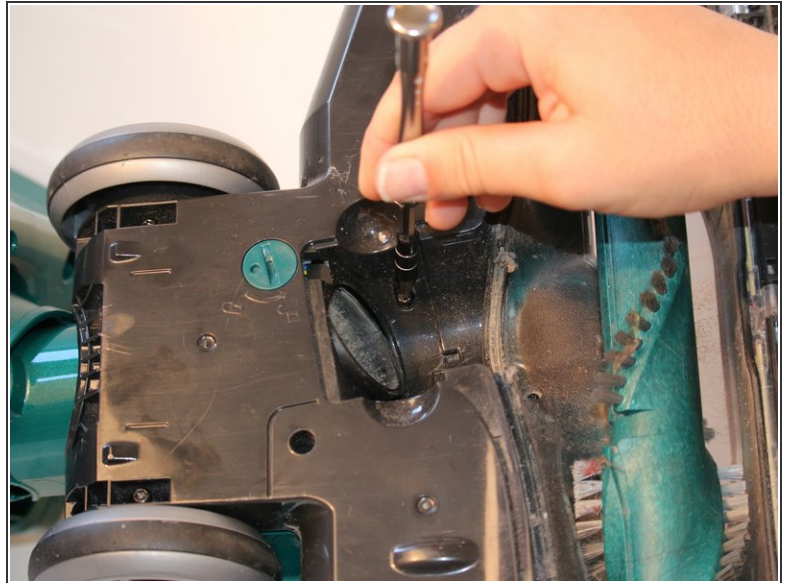
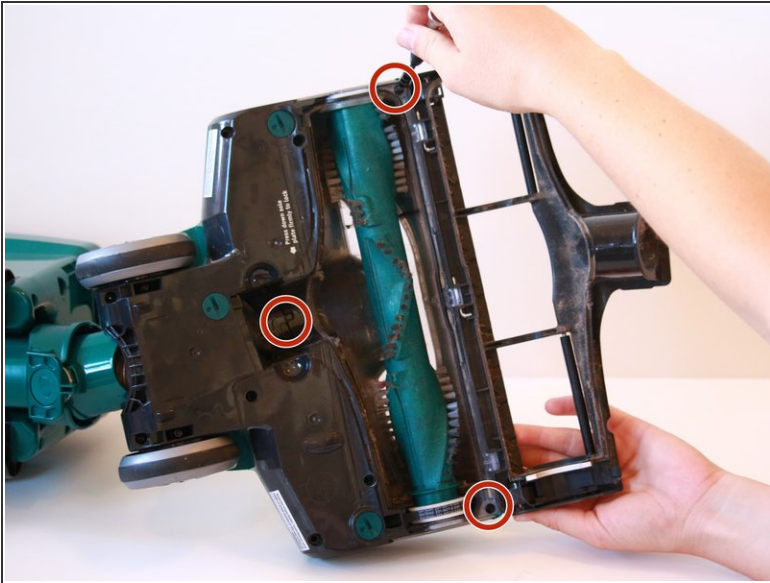
- Turn the vacuum on its side.
- Using a quarter, twist the three green locks to the unlock position.
- Pull the bottom roller brush cover to open the vacuum.

Step 2



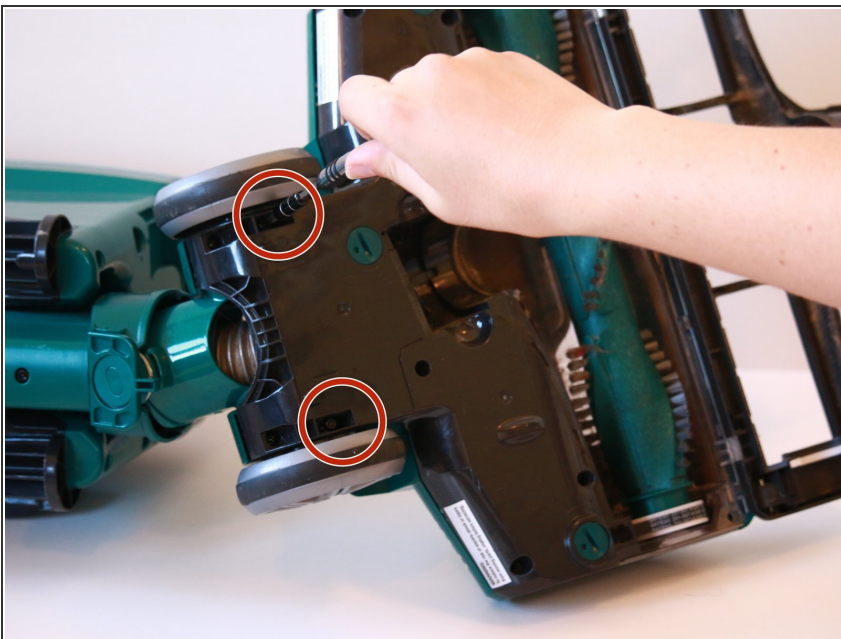
- Using a T20 screwdriver, remove the five 15.9 mm screws on the outside cover.

Step 3



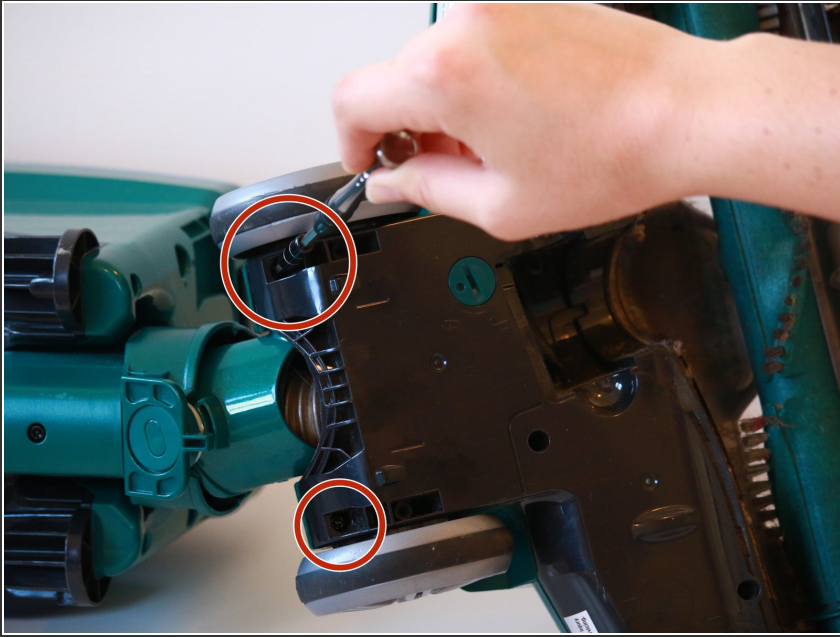
- Remove the three 14.3 mm screws with a T20 screwdriver.

Step 4



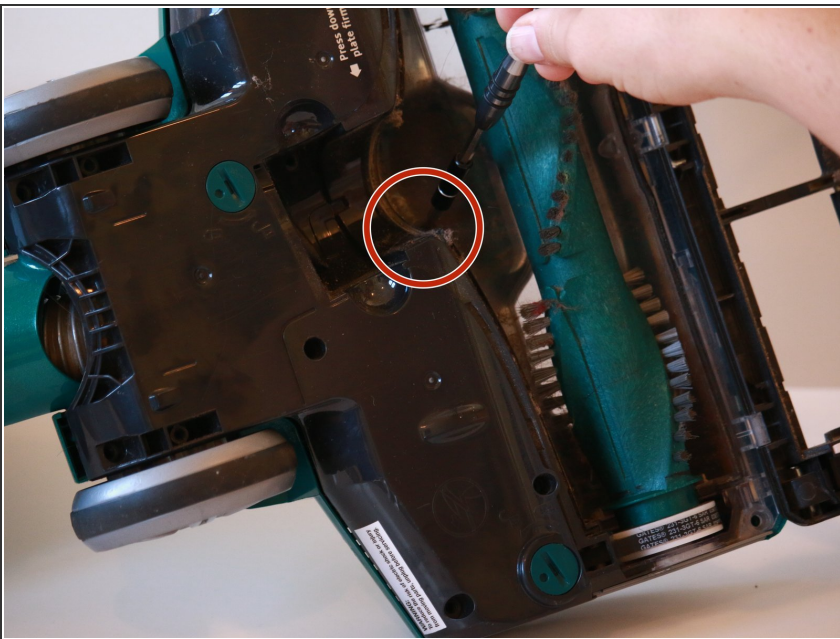
- Remove the two 14.3 mm screws under the wheels with a T20 screwdriver bit.

Step 5



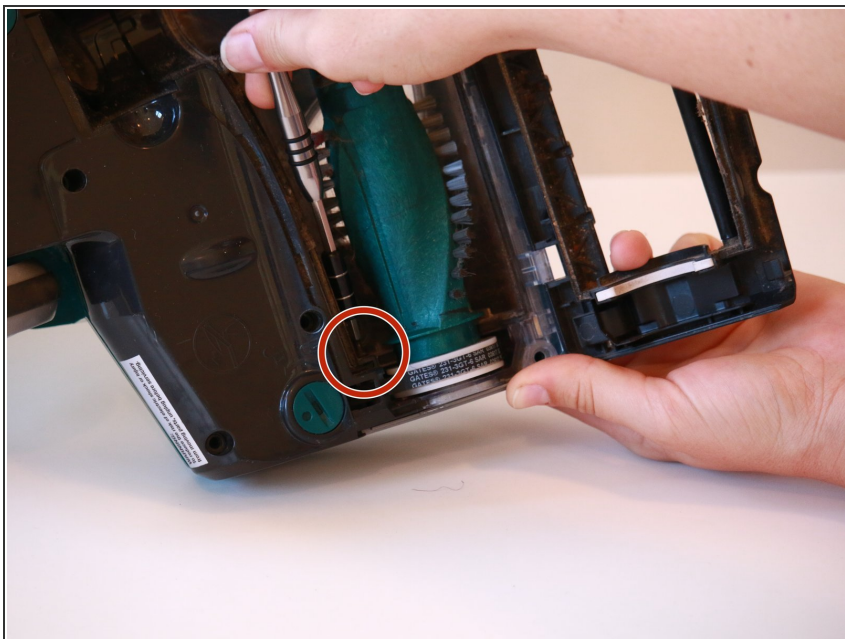
- Remove the two 15.9 mm screws from behind the wheels with a T20 bit screwdriver.

Step 6



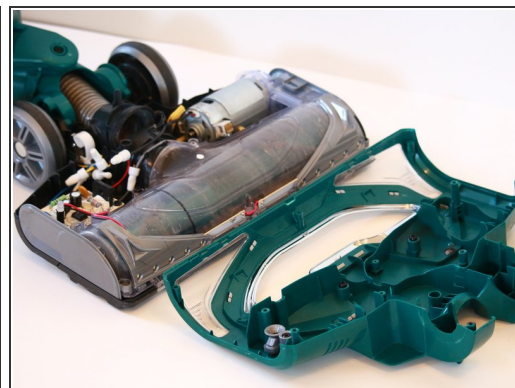
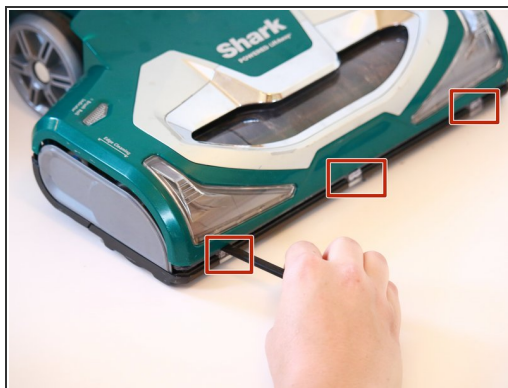
- Remove the single 13.4 mm small screw behind the roller brush with a PH0 screwdriver bit.

Step 7



- Remove the single 13.4 mm screw from behind the belted end of the roller brush with a T20 screwdriver bit.

Step 8



- Turn the vacuum around.
- Using a spudger, pry the top of the vacuum cover off. There are three tabs behind each of the clear rectangles below the headlights.

Step 9



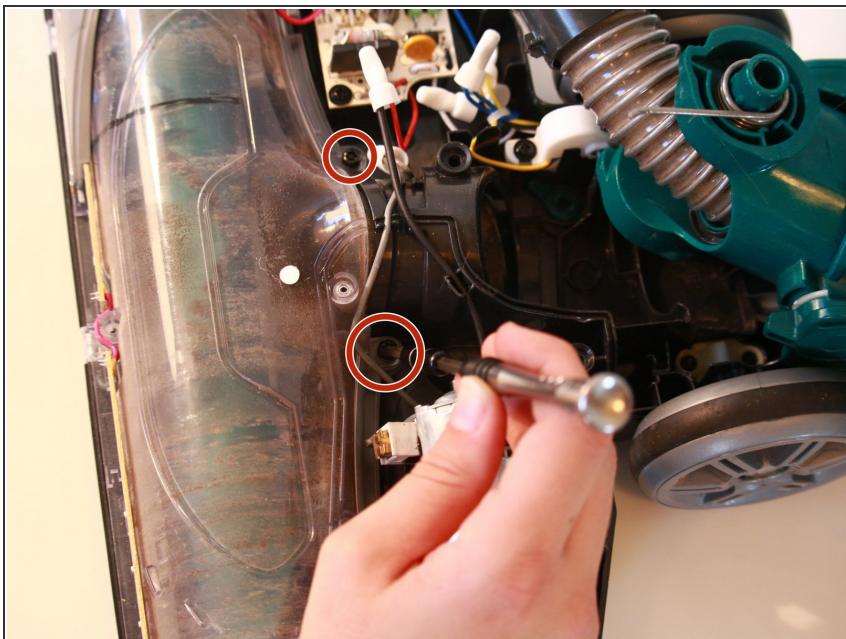
- Remove both of the headlight covers with the spudger.

Step 10



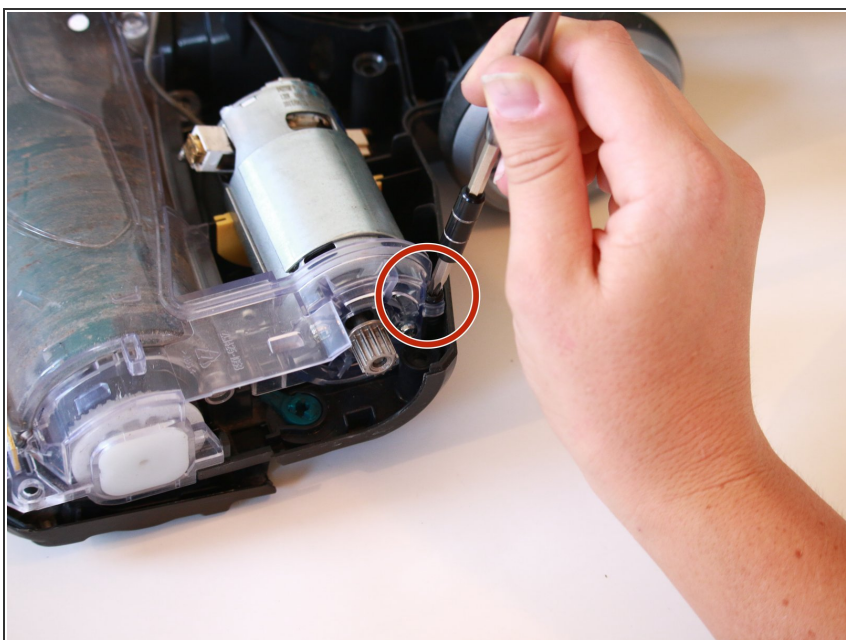
- Remove the grey side panel on the motor side of the vacuum with a spudger. Pry under each tab to release the side panel.

Step 11



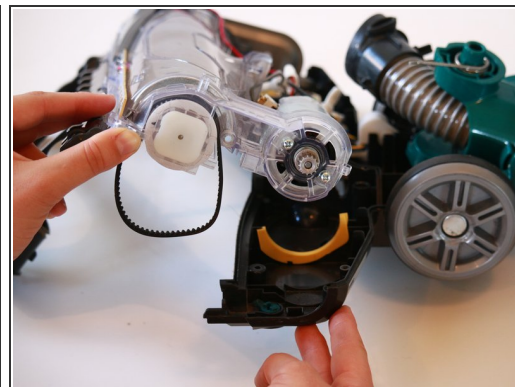
- Remove the two 13.4 mm screws with a T20 bit screwdriver.

Step 12



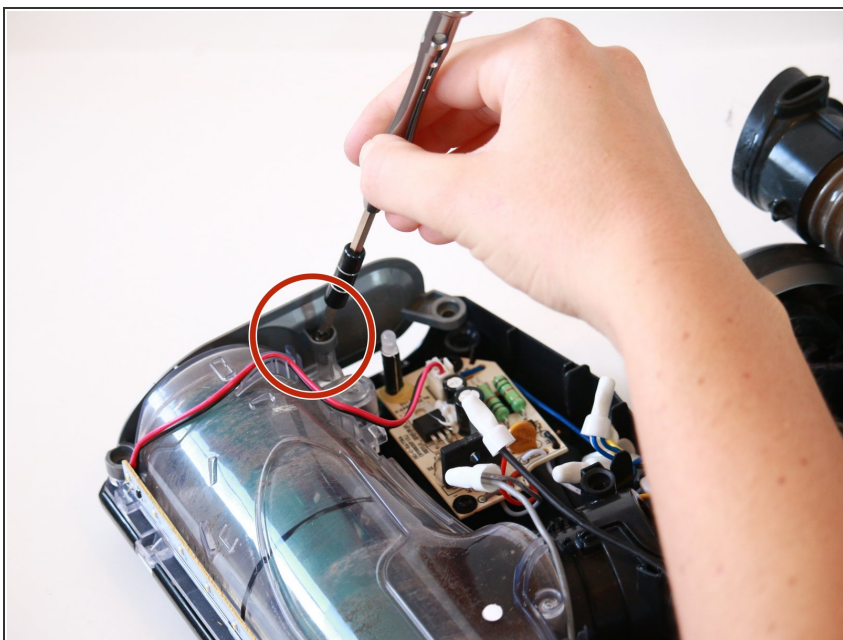
- Remove the single 13.4 mm screw located next to where the belt was detached, securing the motor in place, with a PH1 screwdriver.

Step 13



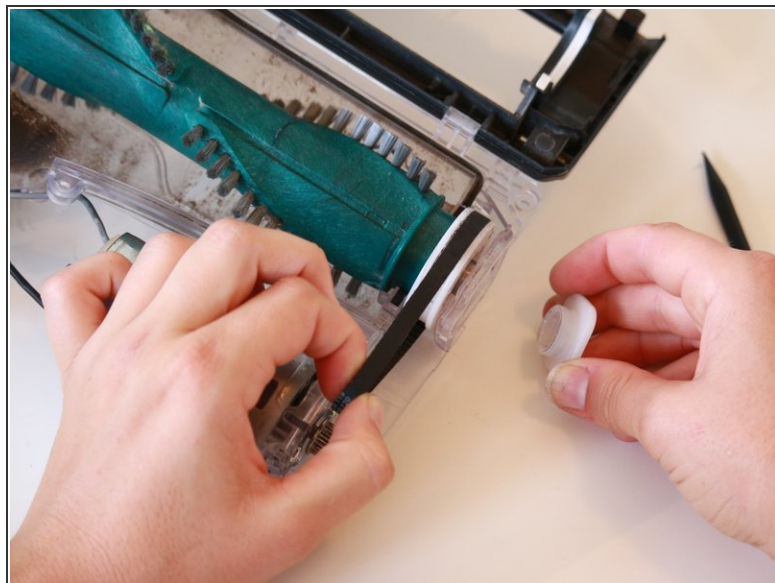
- Remove the visible side of the belt from the gear with a spudger.

Step 14



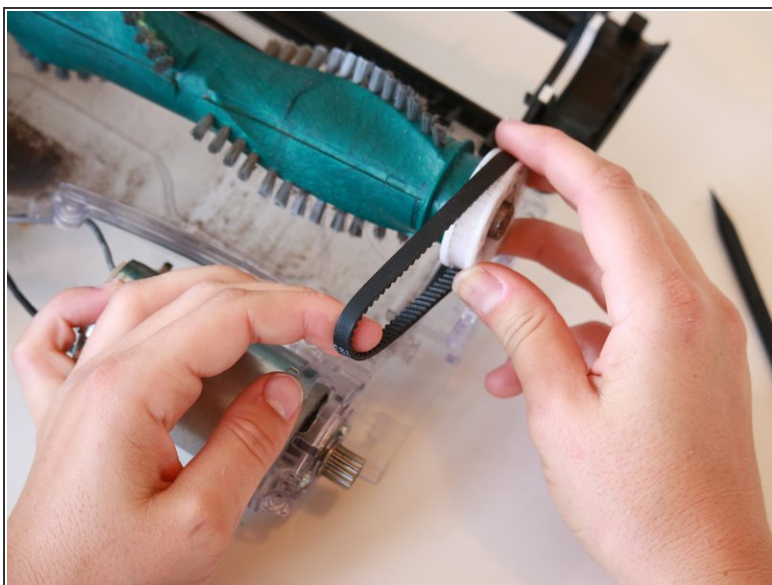
- Remove the grey panel from the opposite side, by uncrewing the single 13.4 mm screw with a PH1 screwdriver. This will release the container for the roller brush and belt motor.

Step 15



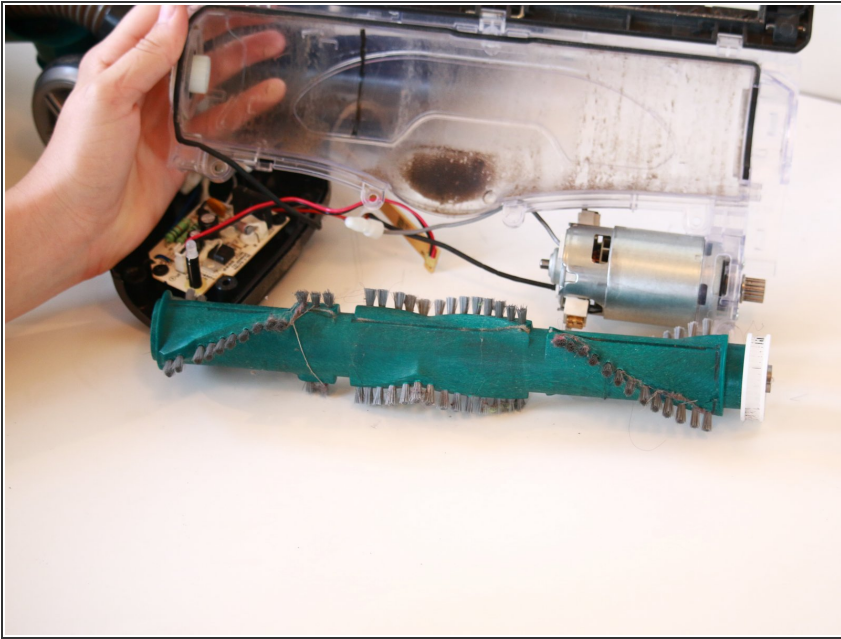
- Using the spudger, push the white end cap out of the clear plastic by placing the spudger on the roller brush side and pushing the cap outward.

Step 16



- Remove the belt from the gear.

Step 17 — Roller Brush



- Pull roller brush away from the vacuum.

To reassemble your device, follow these instructions in reverse order.