



Amazon Echo 2nd Generation Front Cover Panel Replacement

How to replace the front cover panel on the Amazon Echo 2nd Generation.

Written By: Eric Inman



INTRODUCTION

Follow this guide if any of the four buttons on the front panel do not work or are broken.



TOOLS:

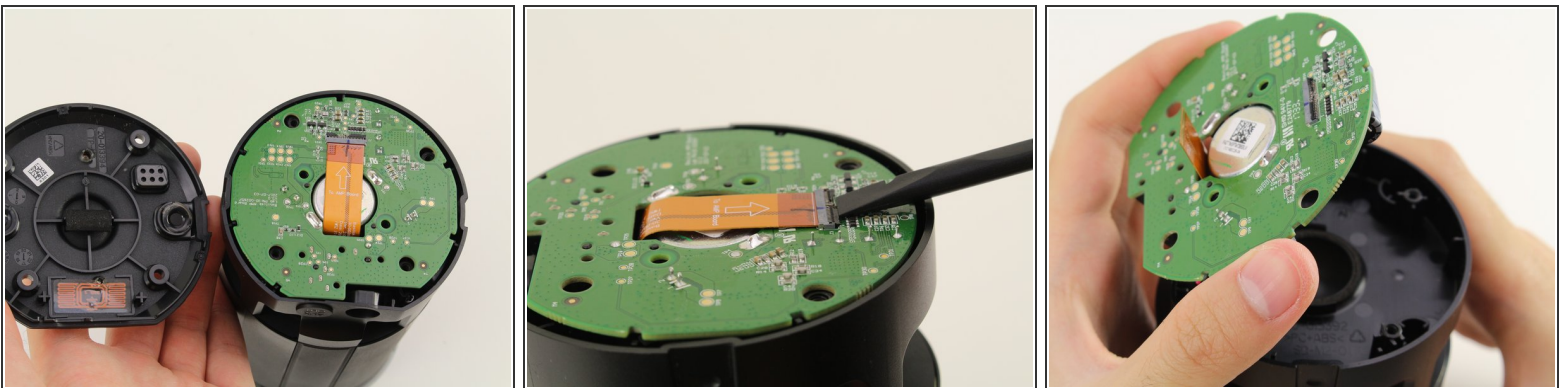
- [T8 Torx Screwdriver](#) (1)
 - [Spudger](#) (1)
-

Step 1 — AMP Board



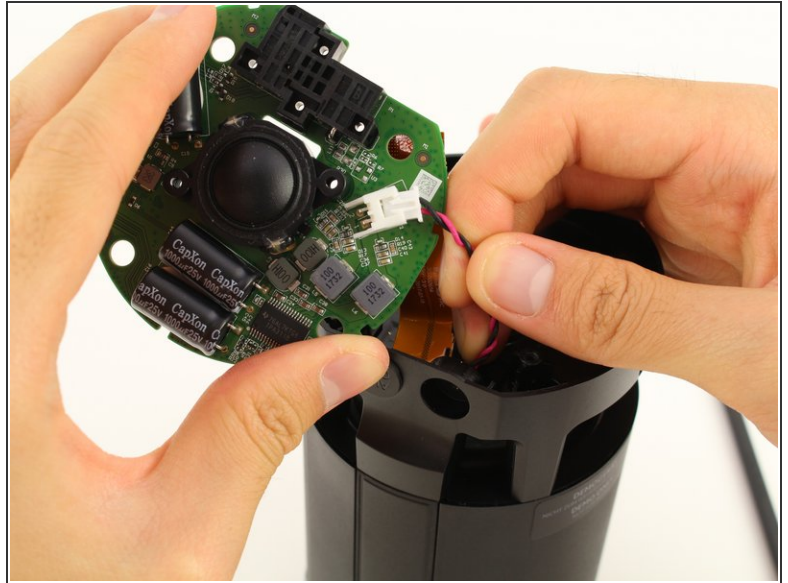
- Remove the rubber layer beneath the device.
- Look for the crater beneath the rubber layer and place your thumb on it. Hold down and lift off the cover with your other hand.
- Remove the four 8.0 mm T8 Torx screws on the lid.
- Remove the lid from the device.

Step 2



- Use a spudger to flip up the small flap on the ZIF connector.
- Gently pull the ribbon cable out of the ZIF connector.
- Lift the AMP Board gently while sliding the ribbon cable out through the center hole to reveal another set of wires underneath the board.

Step 3



- Use a spudger to lift up one of the small flaps on only one side of the female connector.
- Pull on the wire toward the lifted side until the male connector is disconnected.
- Remove the AMP Board.

Step 4 — Subwoofer (speaker)



- Remove the four 30.0 mm T8 Torx screws in the corners.
- Remove the large plastic piece on top of the subwoofer while threading the ribbon cable and male connector through the hole.

Step 5



- Remove the lid on top of the subwoofer.
- Flip the device over and let the subwoofer fall into your hand.

 The subwoofer is a strong magnet. Keep it away from any other electronics and unshielded wires.

Step 6 — Front Cover Panel



- Remove the four 16.0 mm T8 Torx screws underneath the speaker.
- ⚠ Once you unscrew the four 16.0 mm T8 Torx screws, the remaining components of the device have no support. Take caution when flipping the device over to avoid damage to the remaining components.
- Flip the device over while supporting the front panel side.
- Remove the front panel cover by lifting it.

To reassemble your device, follow these instructions in reverse order.