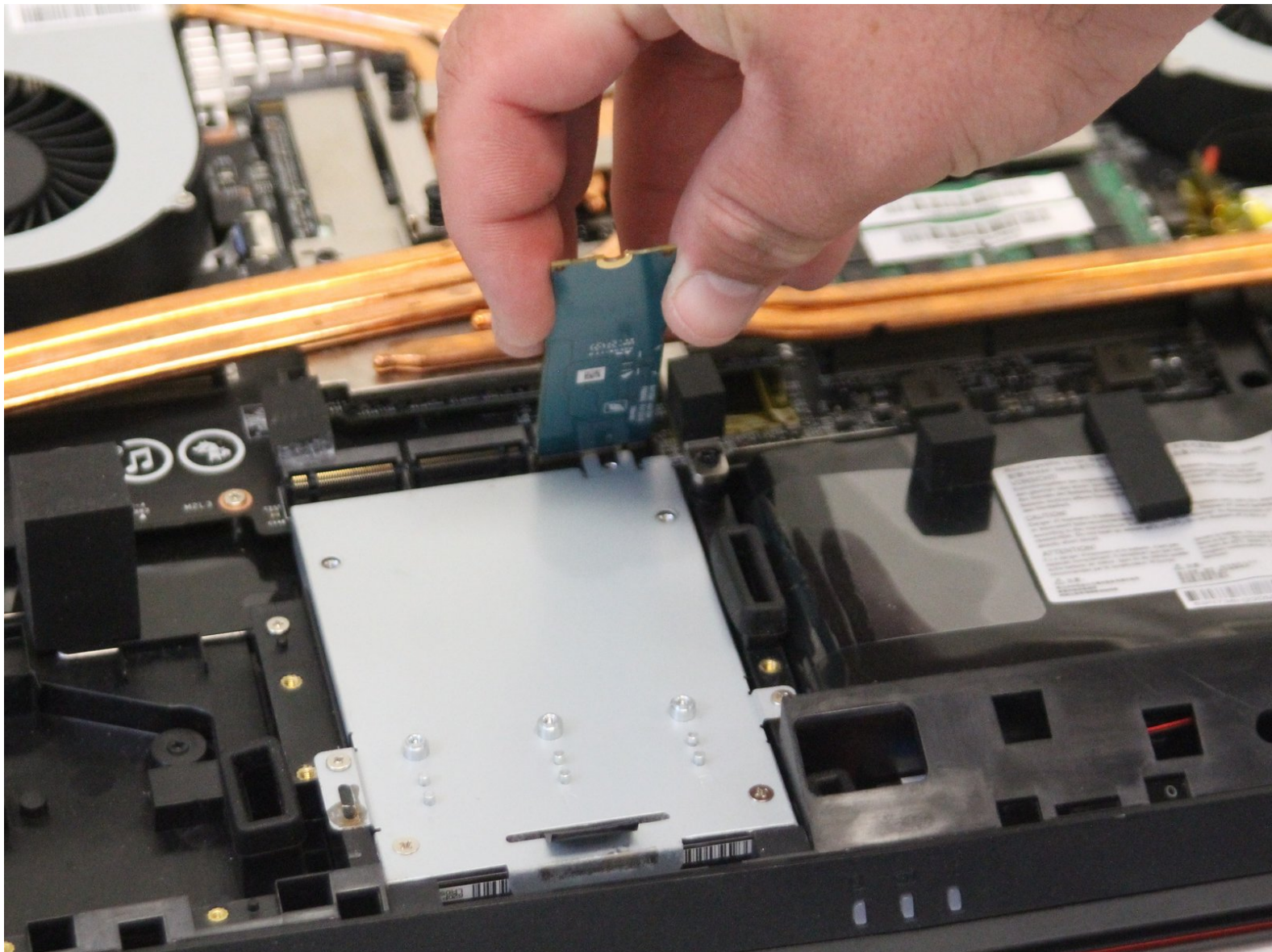




MSI GT75VR 7RF Titan Pro SSD/Hard Drive Replacement

How to remove and replace your Solid State Drives and Hard Drive from your MSI Titan Pro MS-17A2 laptop.

Written By: Alex Wester



This document was generated on 2020-11-28 07:00:12 AM (MST).

INTRODUCTION

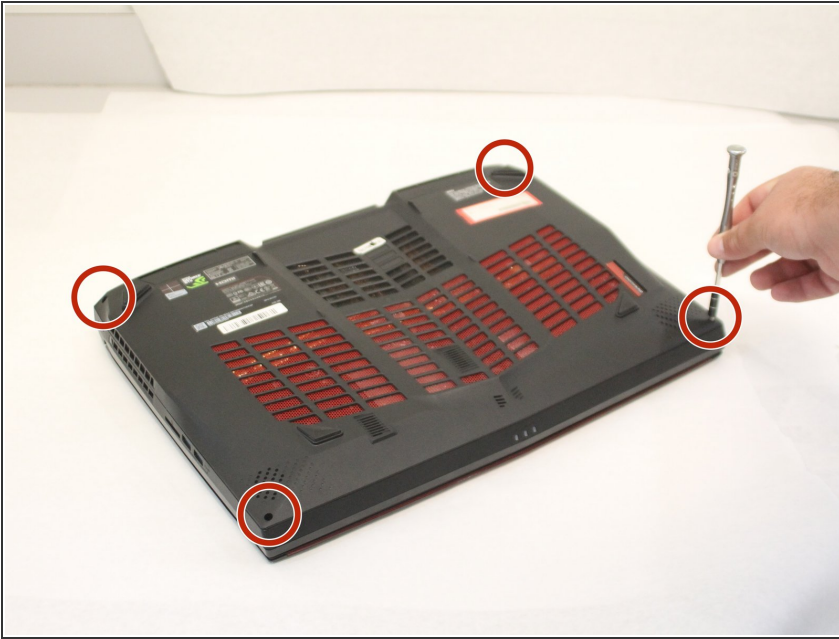
SSD/Hard Drive are both crucial components to insure your computer system is able to save important data and memory. A SSD or Hard Drive can be corrupted or also can be in need of a upgrade. To improve these parts new cards must be installed.



TOOLS:

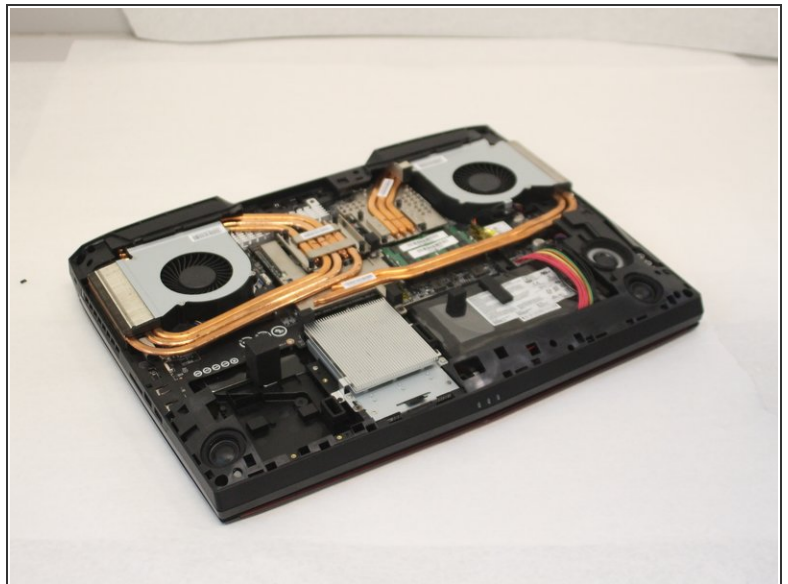
- [Phillips #0 Screwdriver](#) (1)
 - [Spudger](#) (1)
-

Step 1 — SSD/Hard Drive



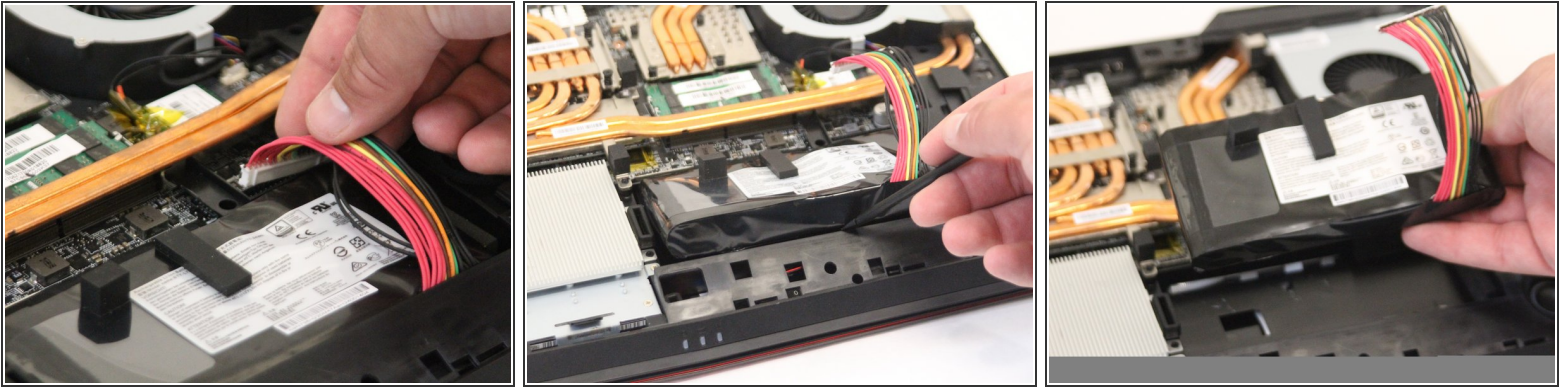
- Remove the four rear screws using the Phillips #0 screwdriver from the laptop as shown. The screws are 0.5 inches long.

Step 2



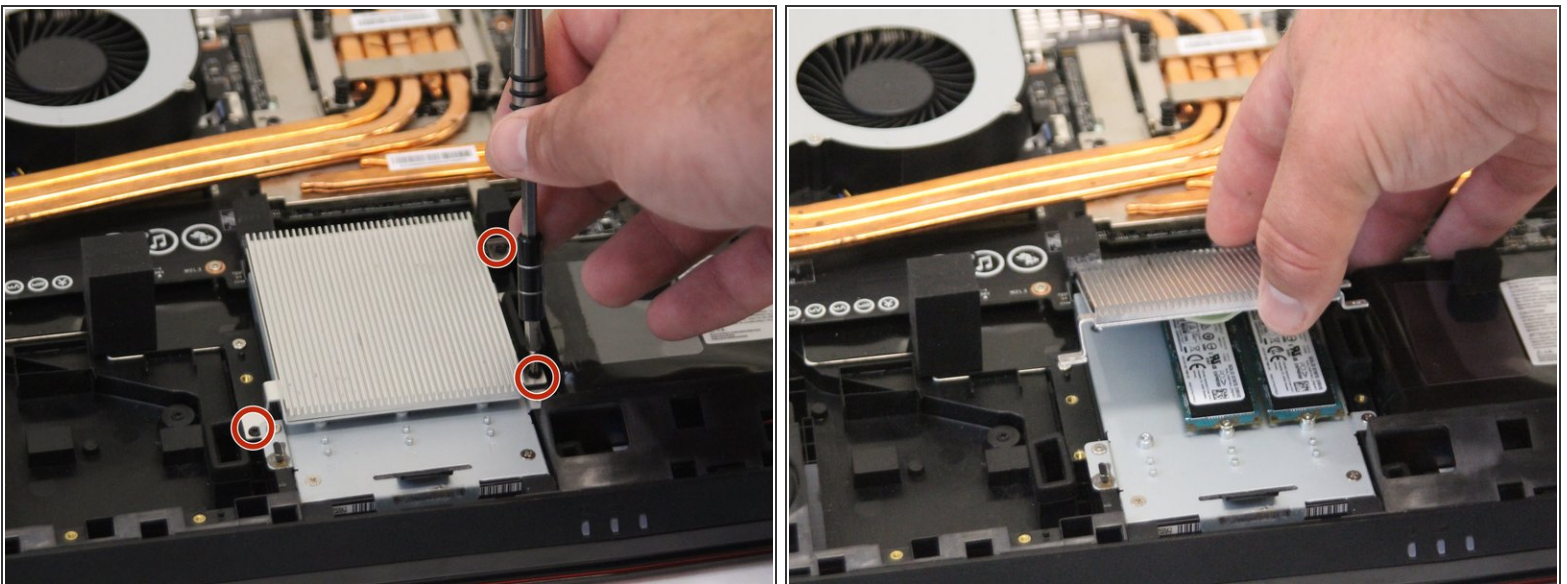
- Using the black nylon spudger, carefully remove the rear cover from the laptop.

Step 3



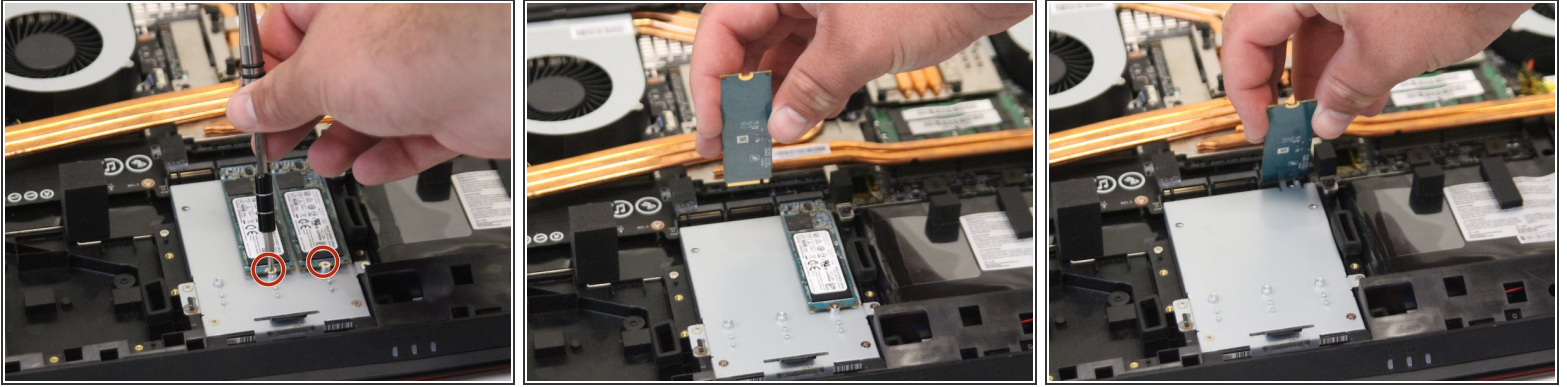
- Carefully unplug the battery and remove it from the laptop. This will be held down with adhesive, but can be safely removed once unplugged.

Step 4



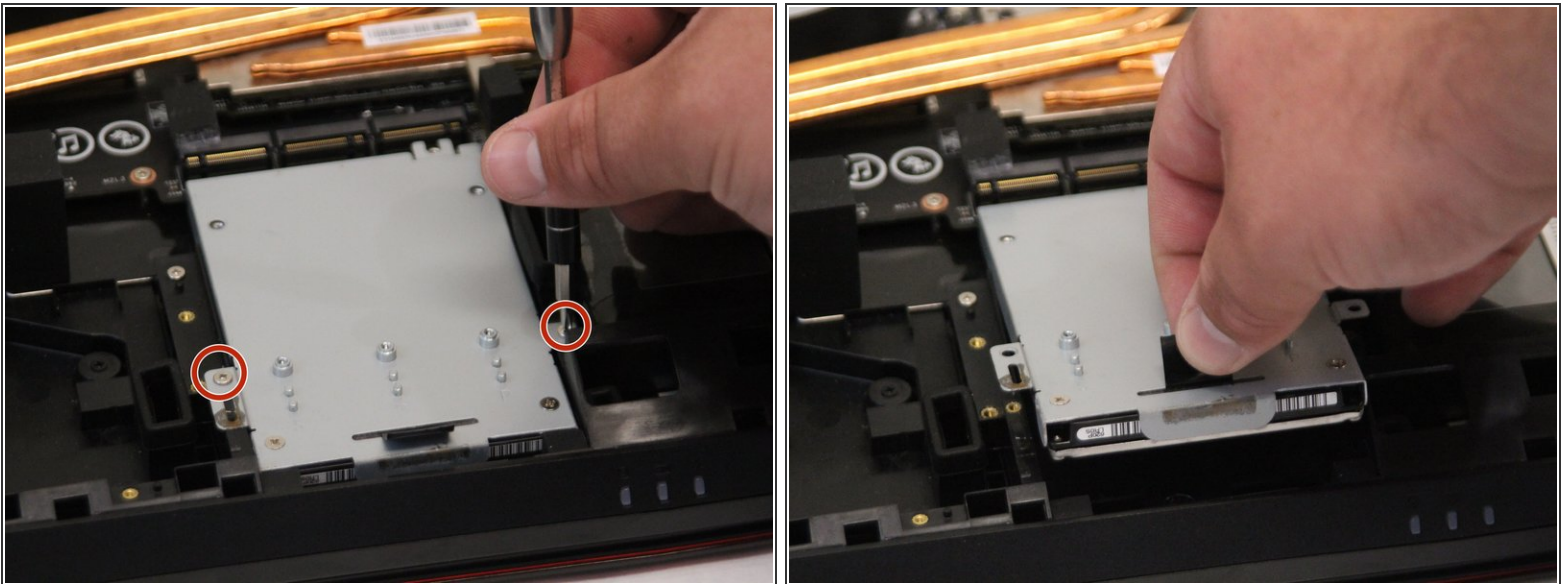
- Using the Phillips #0 screwdriver, remove each screw from the heatsink and remove it.

Step 5



- Using the Phillips #0 screwdriver, remove each screw from the SSD card units, then unplug and remove them. The screws are 0.25 inches long.

Step 6



- Remove all screws from the back of the hard drive using the Phillips #0 screwdriver, then lift up and unplug the unit. Screws are 0.15625 inches long.

To reassemble your device, follow these instructions in reverse order.