



ColecoVision Cartridge Reader Replacement

The purpose of this guide is to communicate...

Written By: Anastazia Kidder



INTRODUCTION

The purpose of this guide is to communicate steps on how to replace or repair the cartridge reader on a ColecoVision.

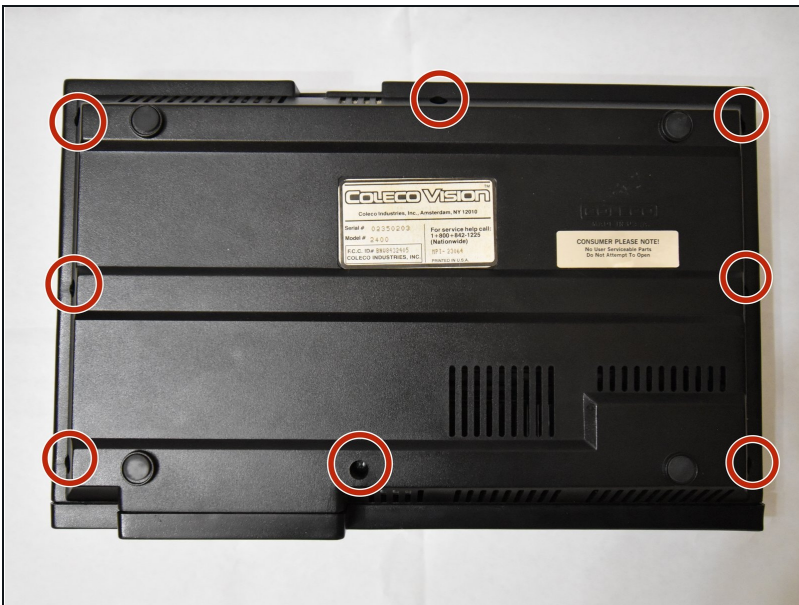
TOOLS:

Phillips #1 Screwdriver (1)
Metal Spudger (1)
Spudger (1)
Portable Soldering Iron (1)
Desoldering Pump (1)

PARTS:

15 Pin Card Edge Connector (Cartridge Reader) (1)

Step 1 — Cartridge Reader



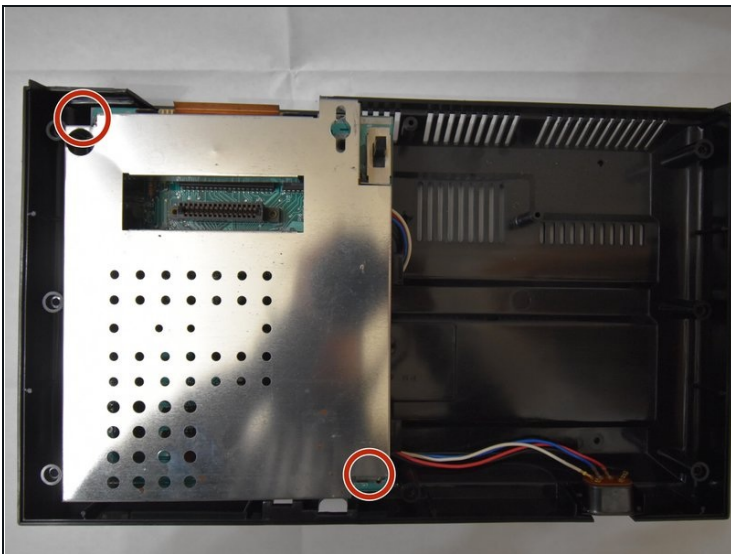
- Flip the console upside down and remove the eight 15mm Phillips #1 screws.

Step 2



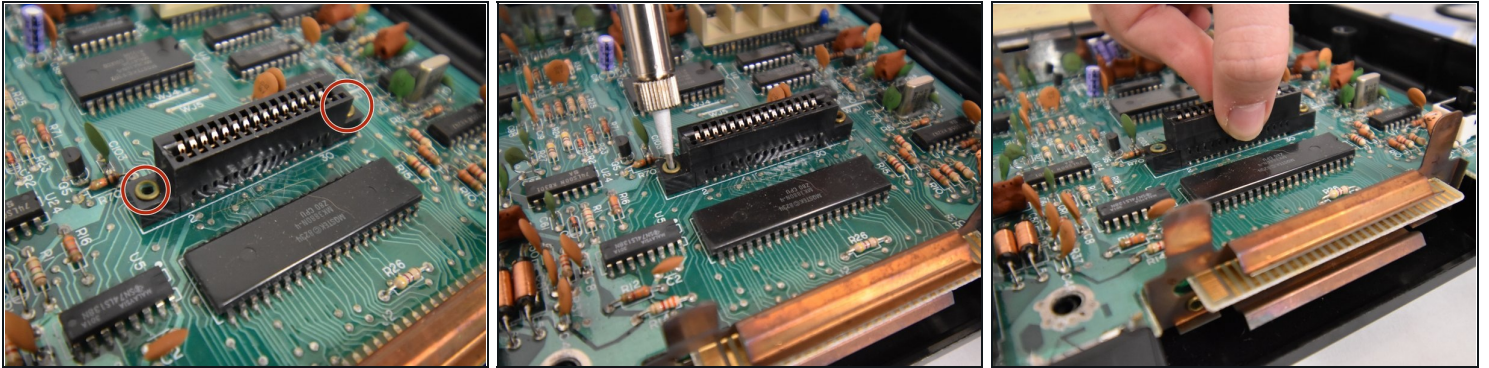
- Use the metal spudger along the bottom rim of the front panel to safely remove the top of the console. Set aside the top.

Step 3



- Remove the two 15mm Phillips #1 screws holding the casing in place.
- Remove the casing to reveal the cartridge reader.

Step 4



- Desolder the sides of the cartridge reader using the soldering iron and [desolder pump](#).
 - [Refer to this soldering technique guide for reference](#)
 - Patiently wait for the cartridge reader to cool down after being desoldered.
- ⚠ It's very important to remove all the tin from the motherboard and cartridge reader before lifting it from the motherboard. Failure to do so could damage the motherboard.
- Carefully lift up the cartridge reader. A plastic spudger might be helpful in order to easily remove the cartridge reader.

To reassemble your device, follow these instructions in reverse order.