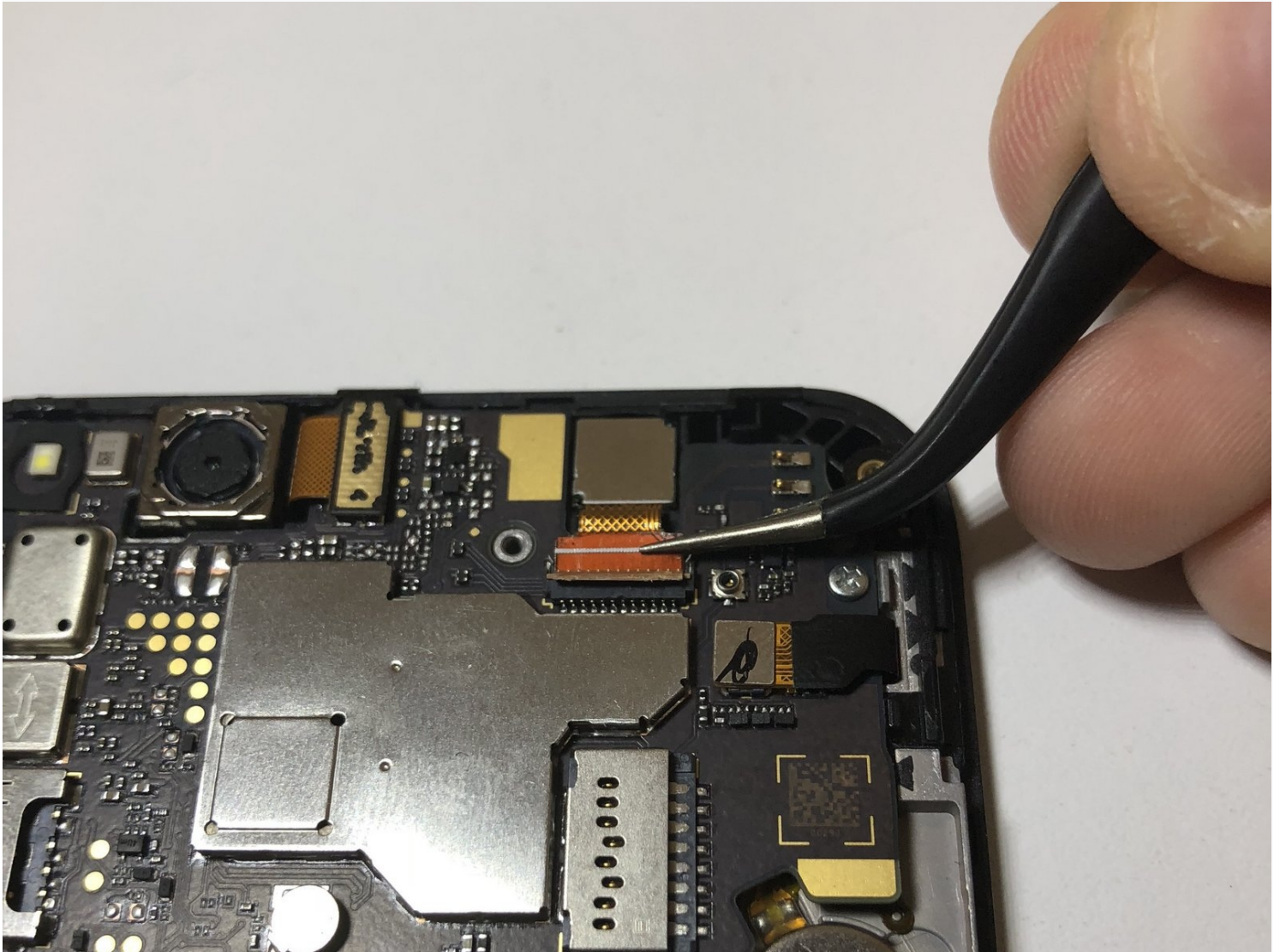




ZTE ZFive G LTE Front-Facing Camera Replacement

This guide provides the steps necessary to...

Written By: Julian Mendoza



INTRODUCTION

This guide provides the steps necessary to replace the front-facing camera on the ZTE ZFive G LTE.

TOOLS:

[iFixit Opening Tool](#) (1)

[Tweezers](#) (1)

[JIS #000 Screwdriver](#) (1)

Step 1 — Front-Facing Camera



- Using the opening tool, pry open the rear cover from the crease at the bottom left corner.

Step 2



- Remove the battery with an opening tool or fingernail.

Step 3



- Unscrew all 16 screws from the mid-frame J000 screwdriver.

① Set the screws aside.

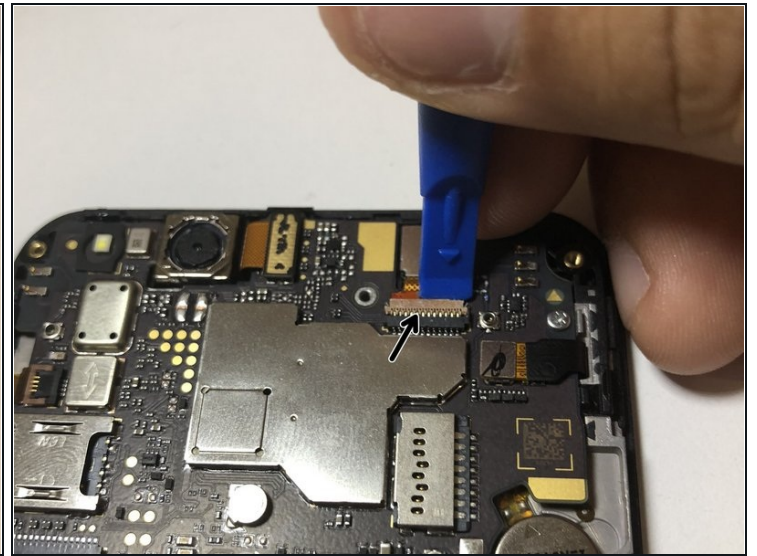
Step 4



- Gently pull up the device body from the inside.

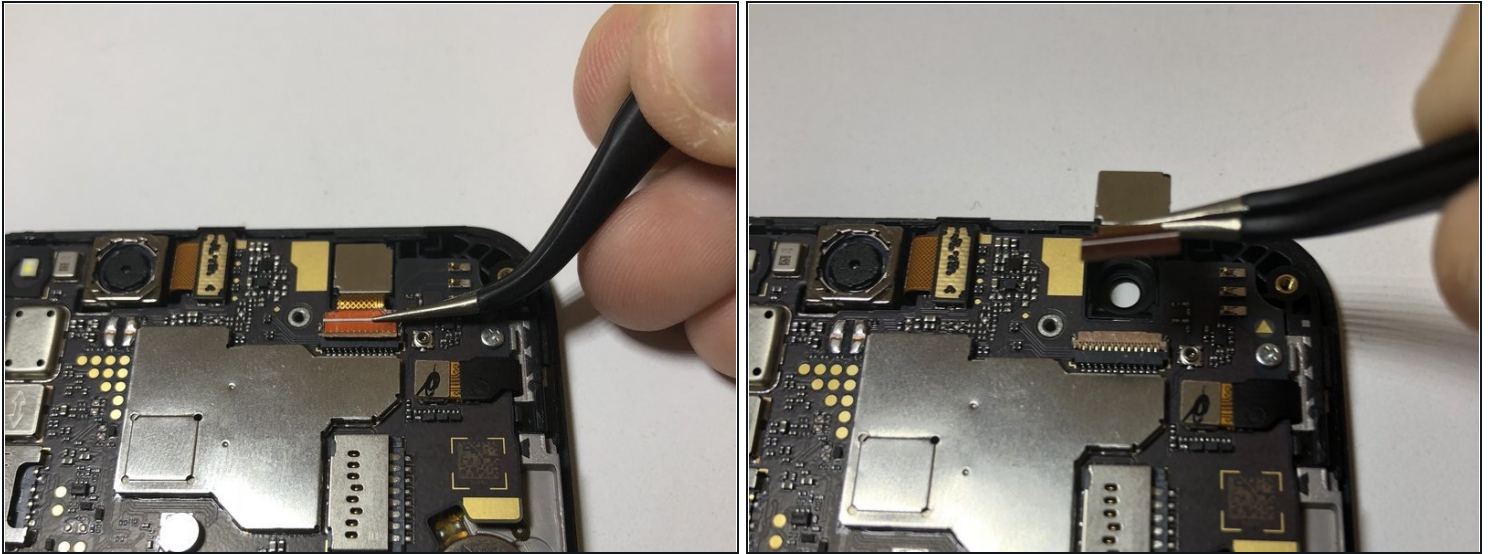
① Make sure to pull on all four sides as shown here.

Step 5



- Once the body is removed, you will see the front facing camera at the top right corner of the device.
- Using an opening tool, lift up the protective clip on top of the camera's ribbon wire.

Step 6



- Using angled [tweezers](#), gently pull the ribbon wire up from the body.
 - ① With the ribbon wire out, you should be able to remove the camera.
- ⚠ If there is adhesive on the camera backing, it may require more force to pull the camera out.

To reassemble your device, follow these instructions in reverse order.