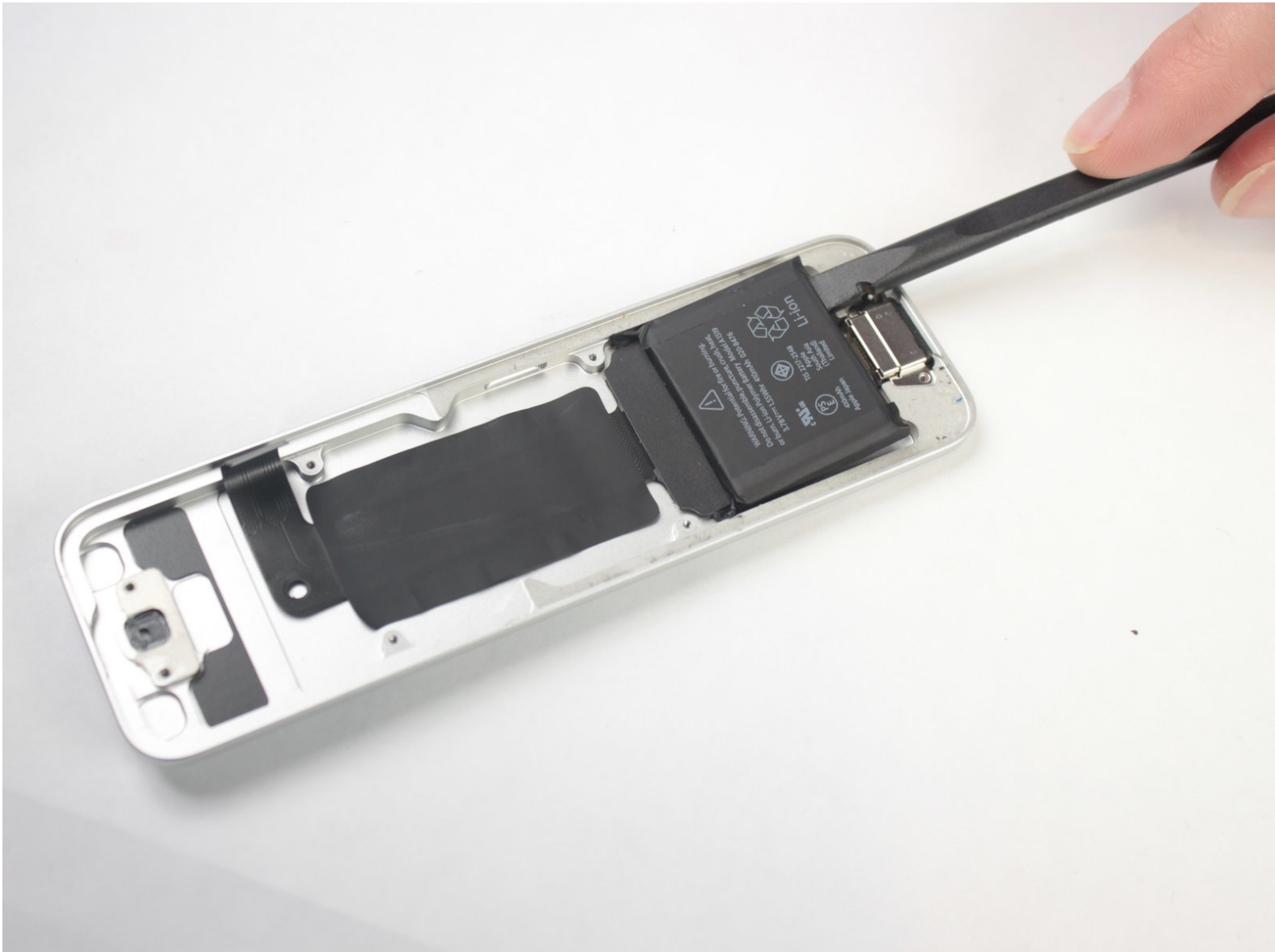




# Apple TV 4K Remote Battery/Charging Port Replacement

A guide to replace the battery/charging port in an Apple TV 4K's remote.

Written By: Keenan Barber



---

## INTRODUCTION

This guide will show you how to access the battery and charging port in your Apple TV 4K remote for replacement.

---

### TOOLS:

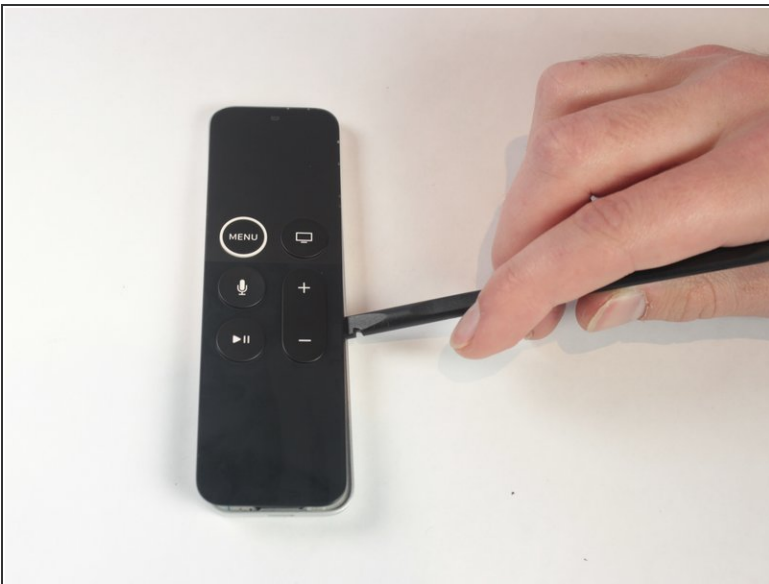
- [T3 Torx Screwdriver](#) (1)
  - [Spudger](#) (1)
  - [Tweezers](#) (1)
  - [iOpener](#) (1)
-

## Step 1 — Remote Battery, Charging Port



- Heat iOpener according to manufacturer's instructions.
- Place over the face of the remote to soften the adhesive under the glass.

## Step 2



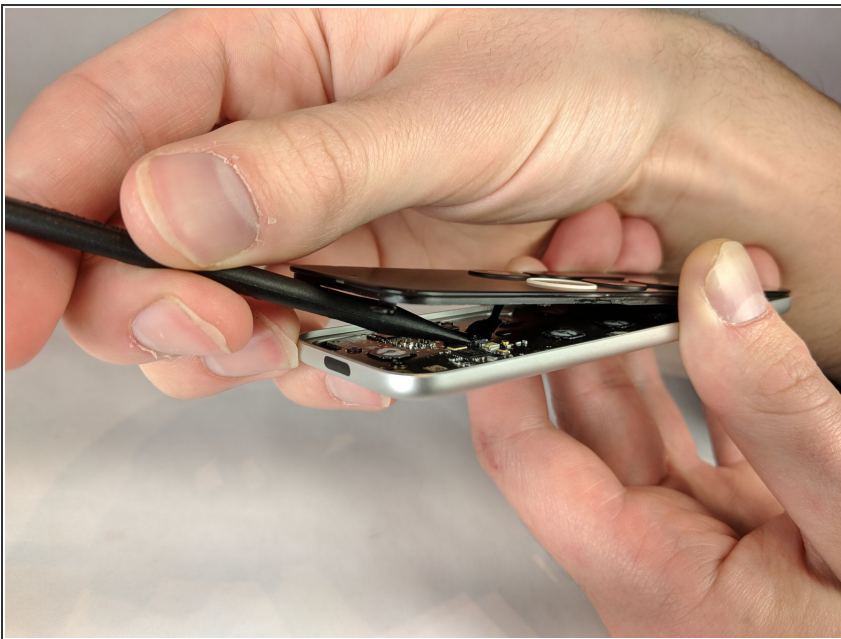
- Using a spudger, gently lift the face of the remote. Starting from the bottom and working your way to the top.

## Step 3



- Push front face forward to disengage plastic clips at the top of the remote.

## Step 4



- Unlatch the connector that binds the touch screen and logic board.

## Step 5



- Use tweezers to pull off the connector that binds the touch screen to the logic board.

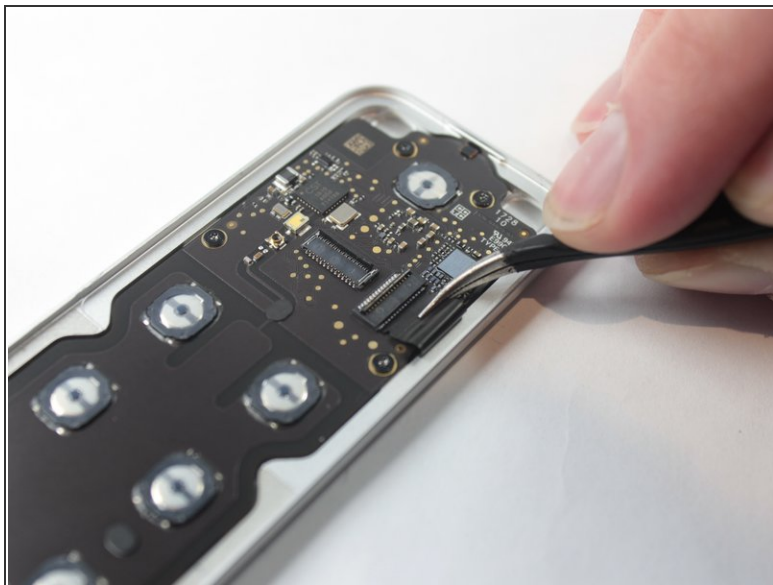
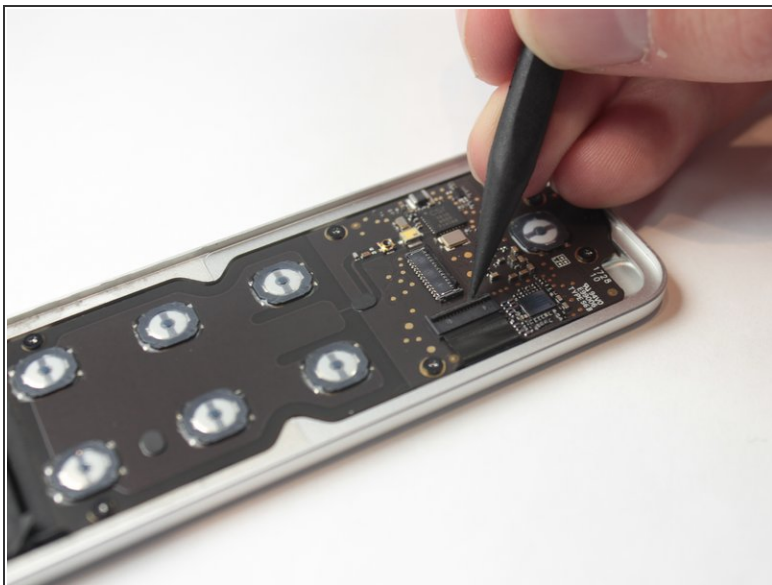
## Step 6



- Lift the face from the body of the remote.

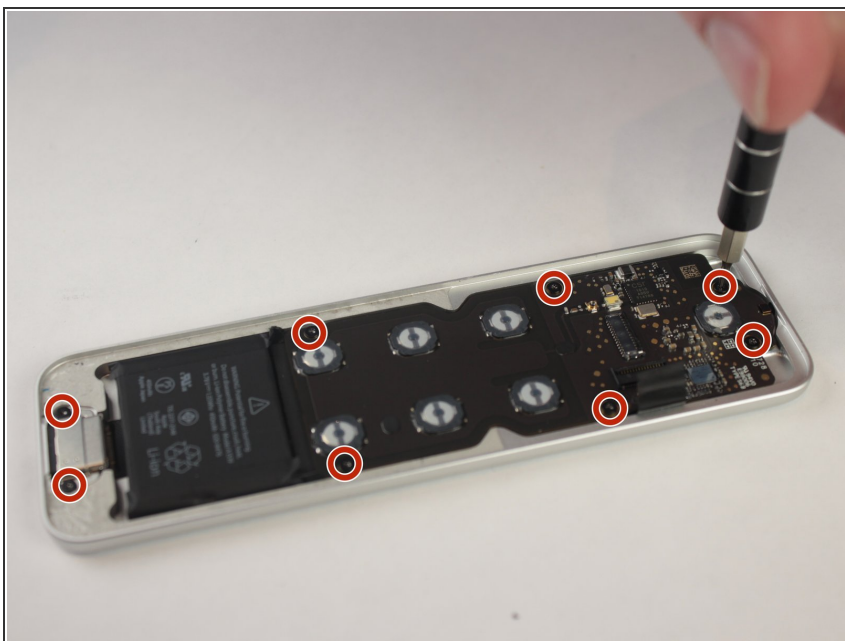


## Step 7



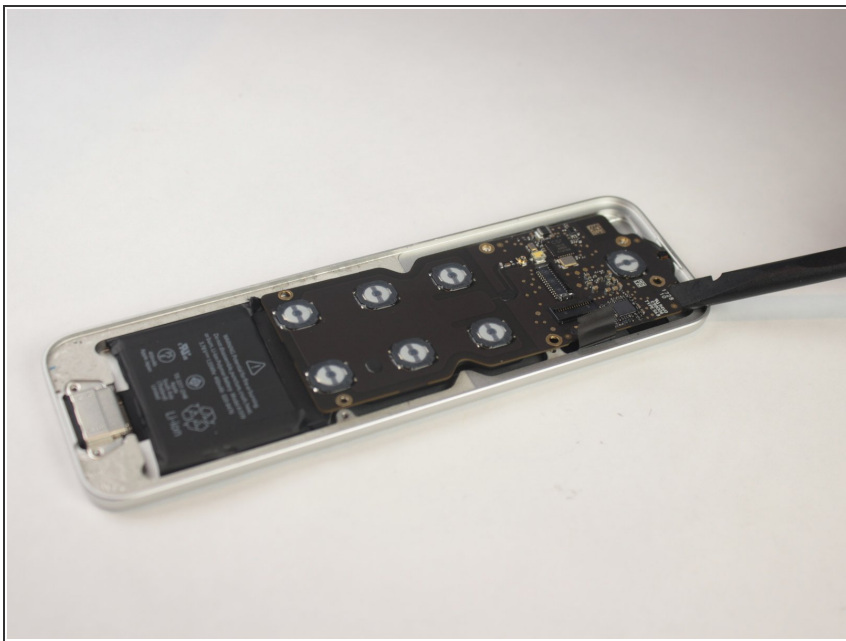
- Lift the latch holding back the connector to the battery.
- Use tweezers to disconnect the battery connector.

## Step 8



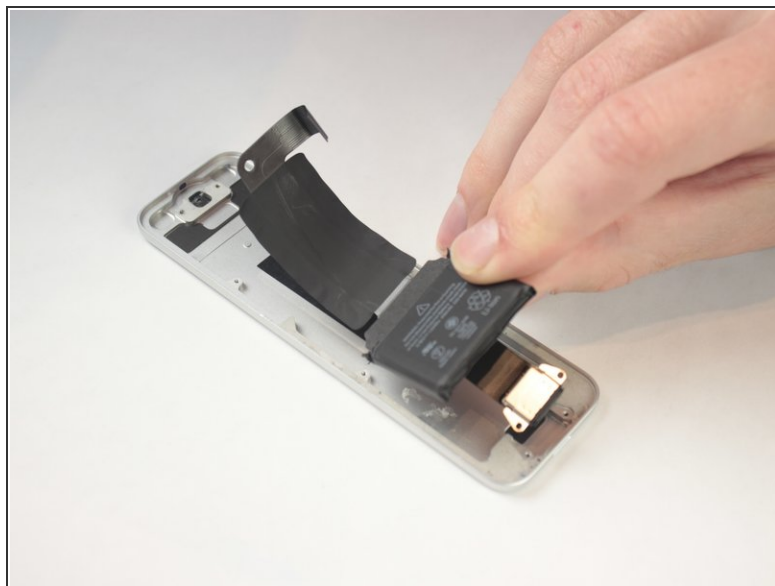
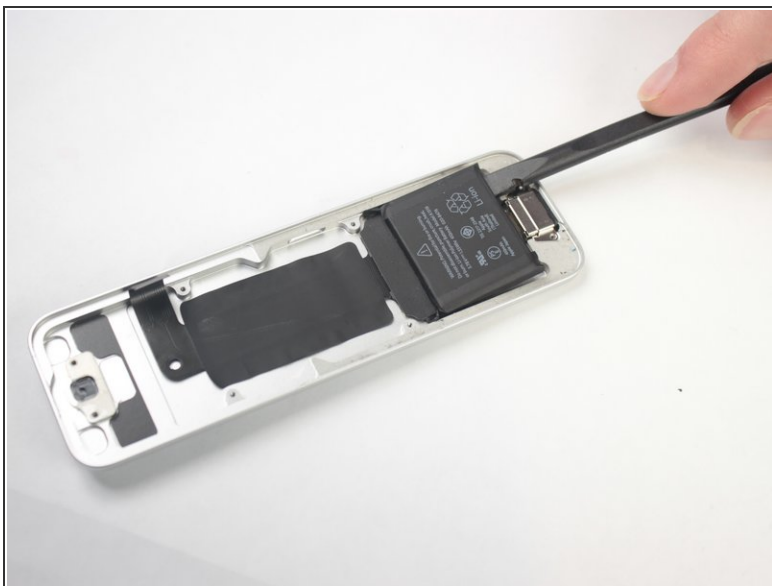
- Remove the following screws using a T3 Torx screwdriver:
  - Eight 2mm screws

## Step 9



- Using a plastic spudger, gently remove the logic board from the case of the remote.

## Step 10



- Gently dislodge the battery from the remote case, making sure to avoid damaging the battery itself.
- The battery should be fully removed now.

To reassemble your device, follow these instructions in reverse order.